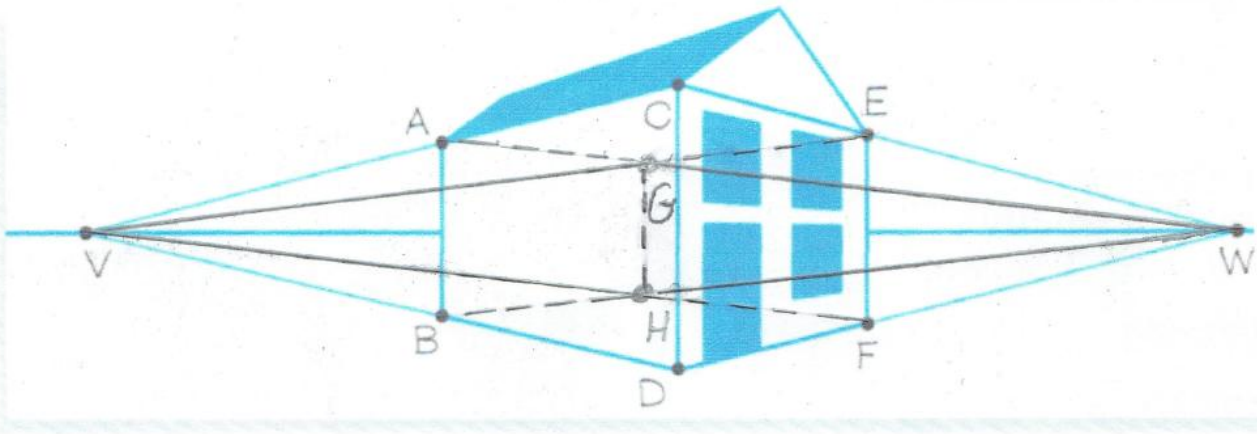


**EDUCATIONAL ASSIGNMENT for JOSEPH JOHN WUNDERLICH** for 11th grade

This assignment covers the following Educational Objectives (Subjects marked with a "■" are the main subject, and those marked with an "□" are secondary subjects):

- Geometry
- Art
- Architecture
- Engineering

*Solve the following problems. Use a pencil.*



1) TWO-point perspective

On the diagram, Draw  $\overleftrightarrow{EV}$  and  $\overleftrightarrow{AW}$ . Label their intersection as point  $G$ .

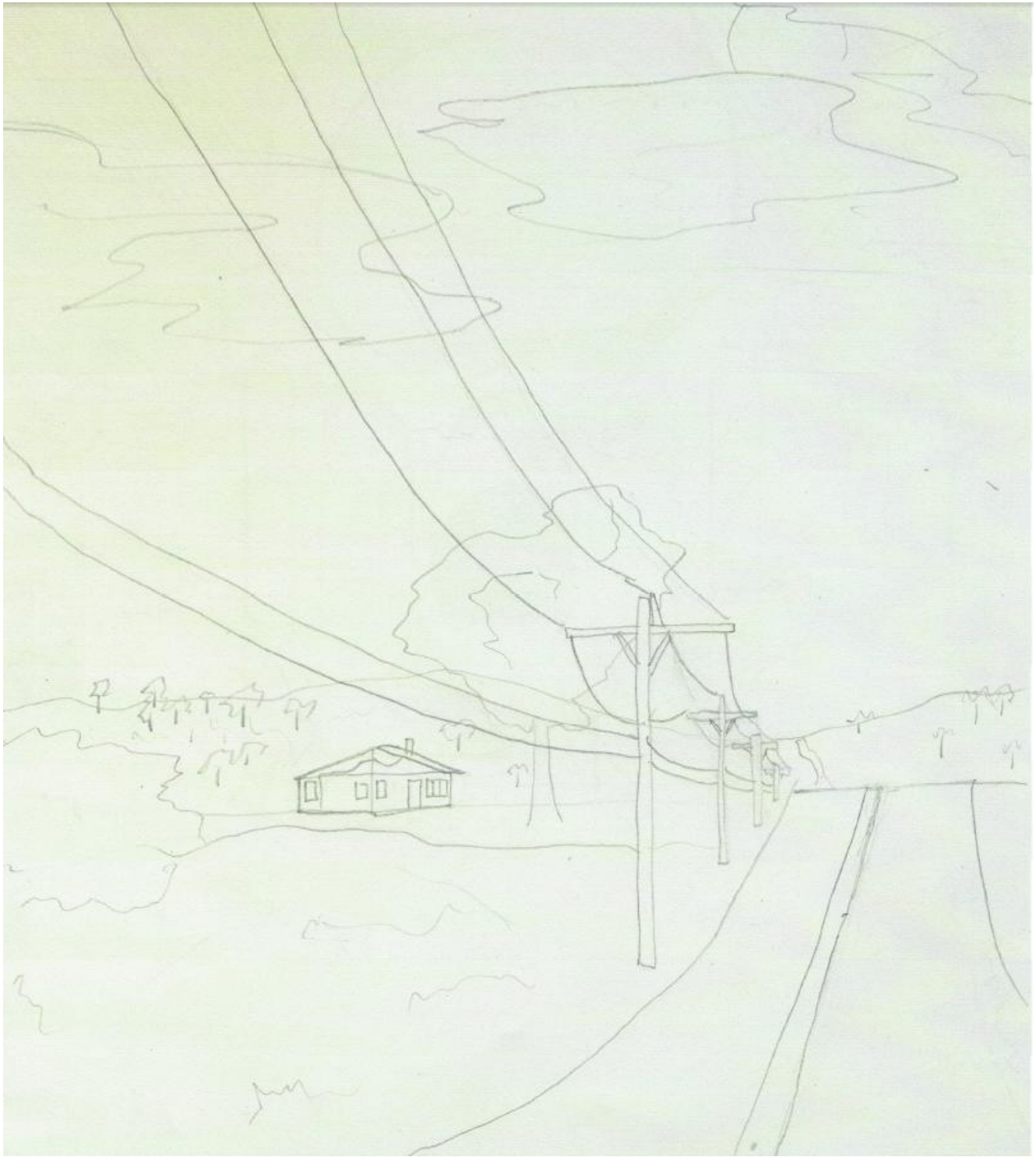
Draw  $\overleftrightarrow{FV}$  and  $\overleftrightarrow{BW}$ . Label their intersection as point  $H$ .

Use dashed lines to draw the hidden edges of the house:  $\overline{GH}$ ,  $\overline{AG}$ ,  $\overline{BH}$ ,  $\overline{EG}$ , and  $\overline{FH}$ .

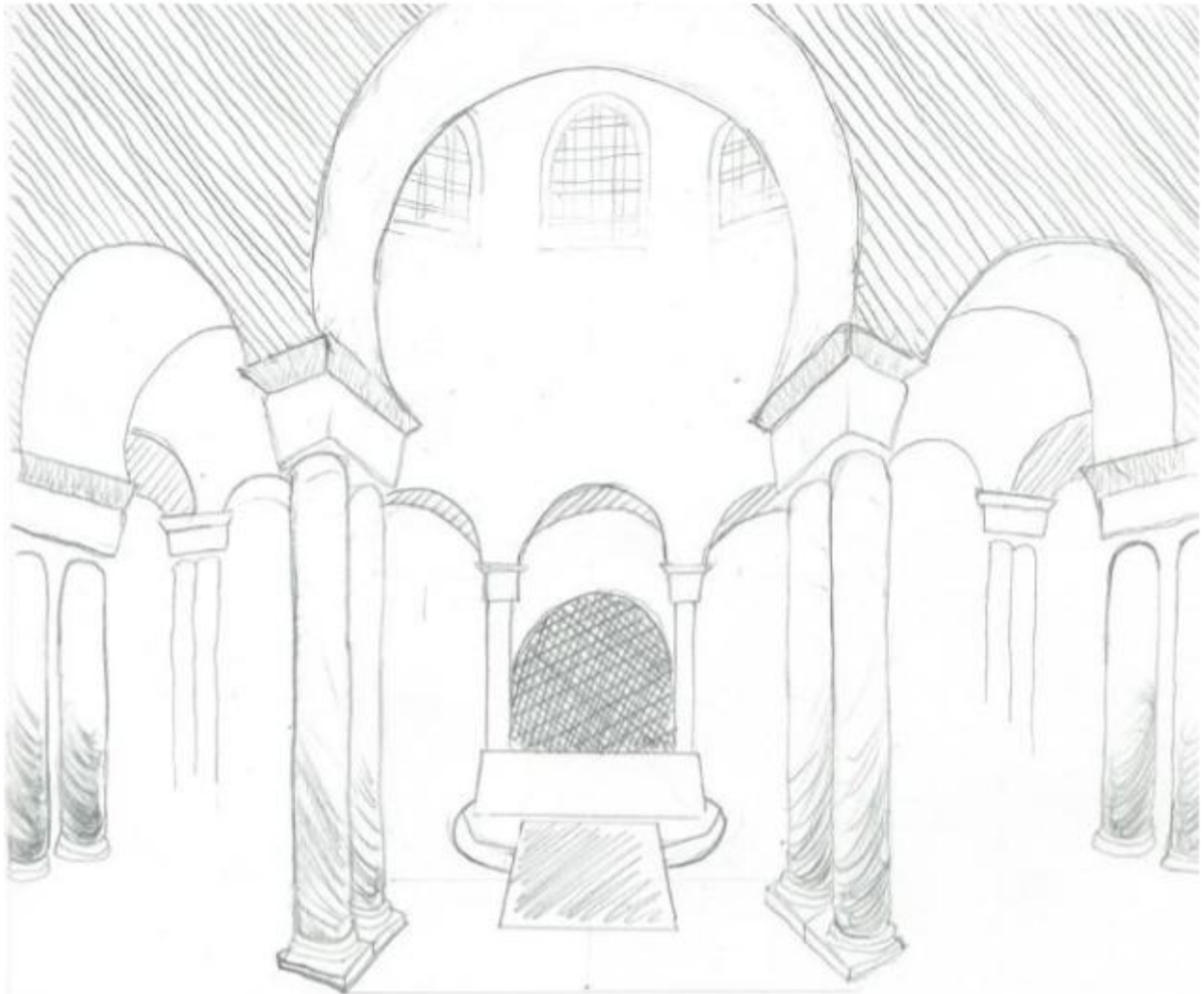
- 2) Using ONE-point perspective, sketch a building interior. *NOTE: This also counts for College course ART105 "Drawing."*



- 3) Using ONE-point perspective, sketch a road vanishing into the distance and include telephone poles and a house. *NOTE: This also counts for College course ART105 "Drawing."*



- 4) Using THREE-point perspective, sketch a building. *NOTE: This also counts for College course ART105 "Drawing," and enhanced memorization in College course ART155 "History of Western Art"*



- 350 A.D.
- Early Christian
- Interior of Santa Costanza, Rome