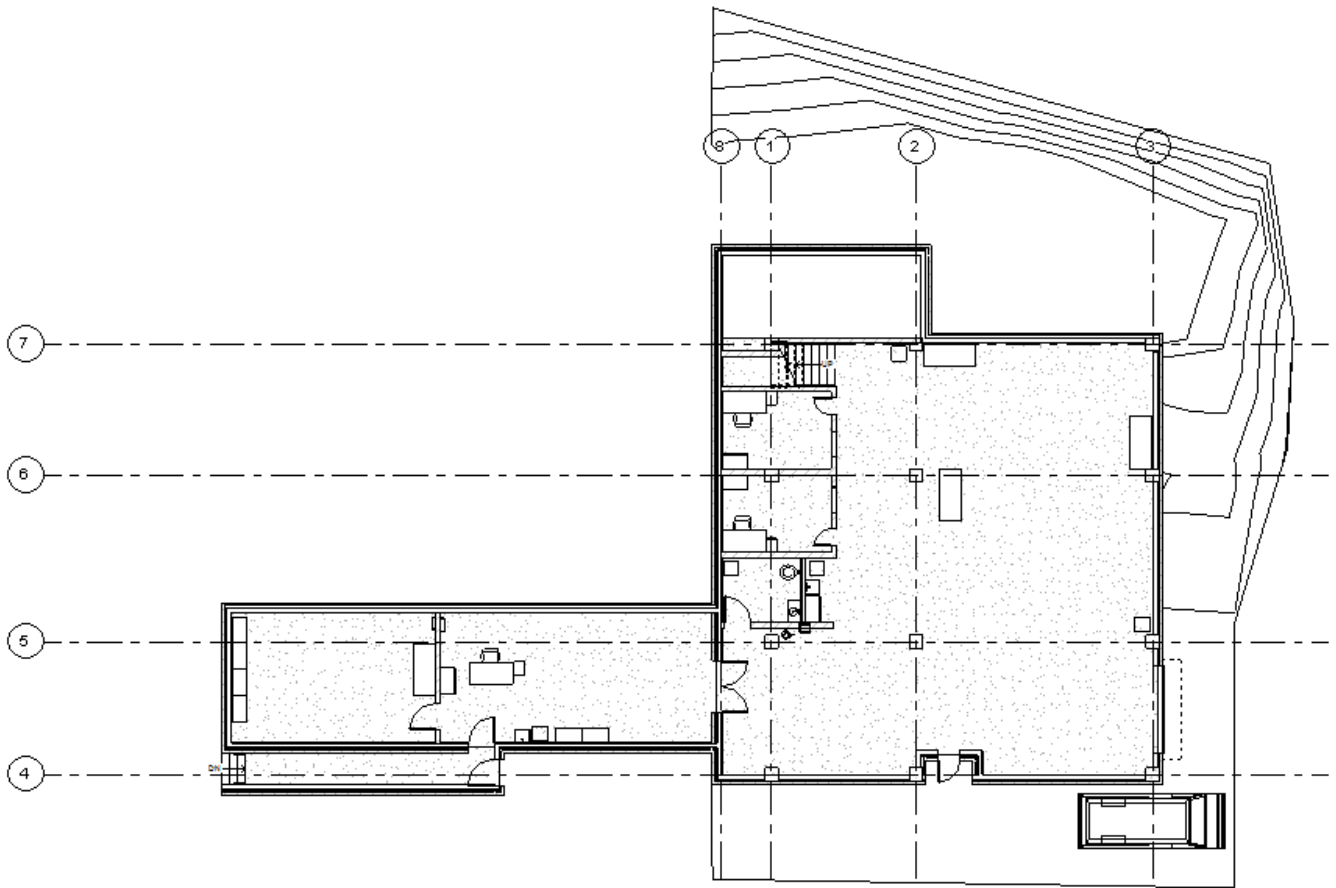


ELIZABETHTOWN COLLEGE FABRICATION SHOP ("SHOP EXTENSION") 5/12/13

by Kaylee Werner, BS Engineering—Sustainable Design and Architectural Studies Minor 2015
EGR280 Engineering-Architecture Research with J. Wunderlich, PhD



FLOOR PLAN (showing old shop on left, new shop-extension on right)



ELIZABETHTOWN COLLEGE FABRICATION SHOP (“SHOP EXTENSION”) 5/12/13

by Kaylee Werner, BS Engineering—Sustainable Design and Architectural Studies Minor 2015

EGR280 Engineering-Architecture Research with J. Wunderlich, PhD



PERSPECTIVE (from gym steps)

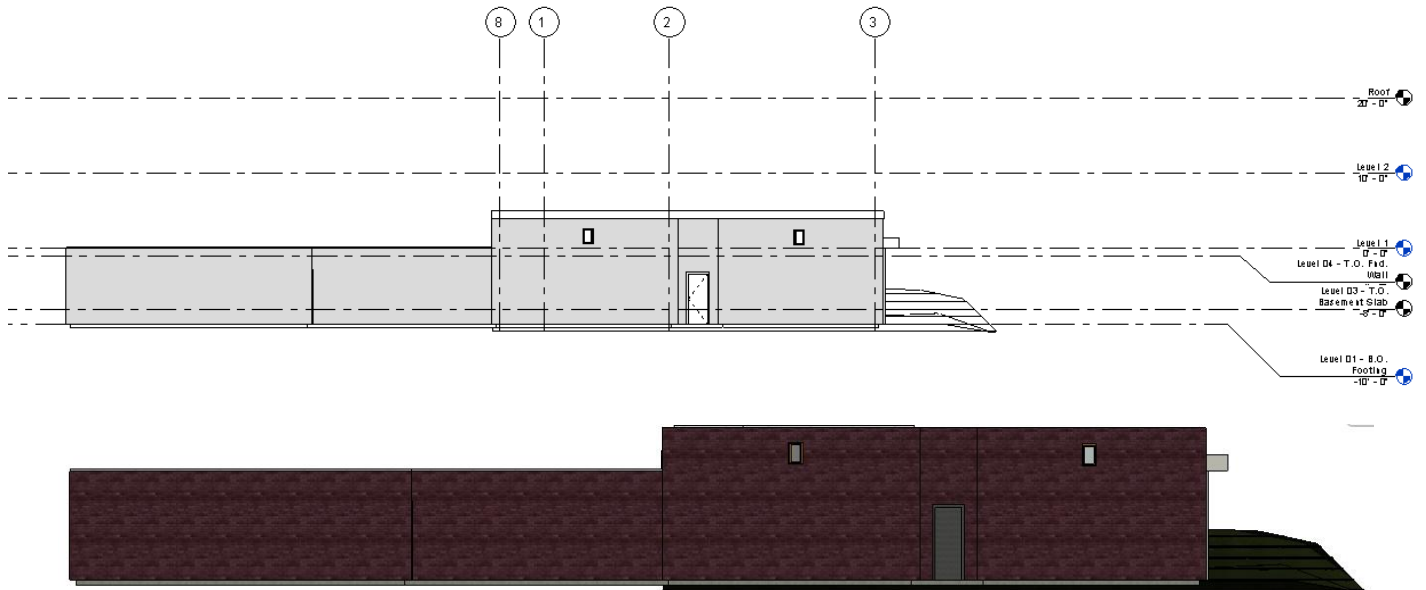


PERSPECTIVE (from College Avenue)

ELIZABETHTOWN COLLEGE FABRICATION SHOP ("SHOP EXTENSION") 5/12/13

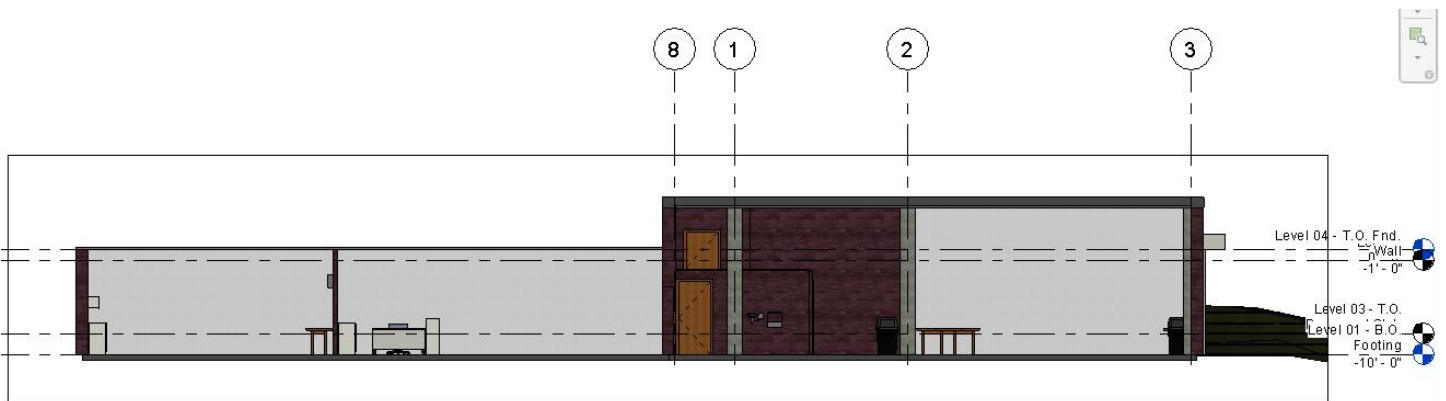
by Kaylee Werner, BS Engineering—Sustainable Design and Architectural Studies Minor 2015

EGR280 Engineering-Architecture Research with J. Wunderlich, PhD



SOUTH ELEVATION (i.e., view from gym)

NOTE: Old shop on the left is within first floor of three-story Masters Center (full-building not shown)

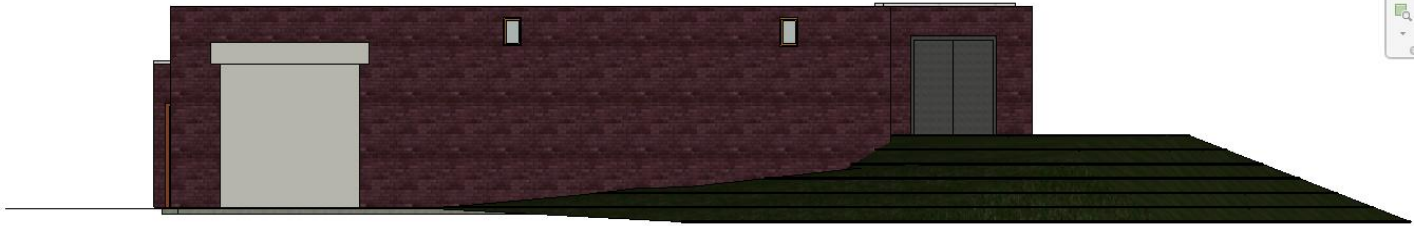


EAST-WEST SECTION

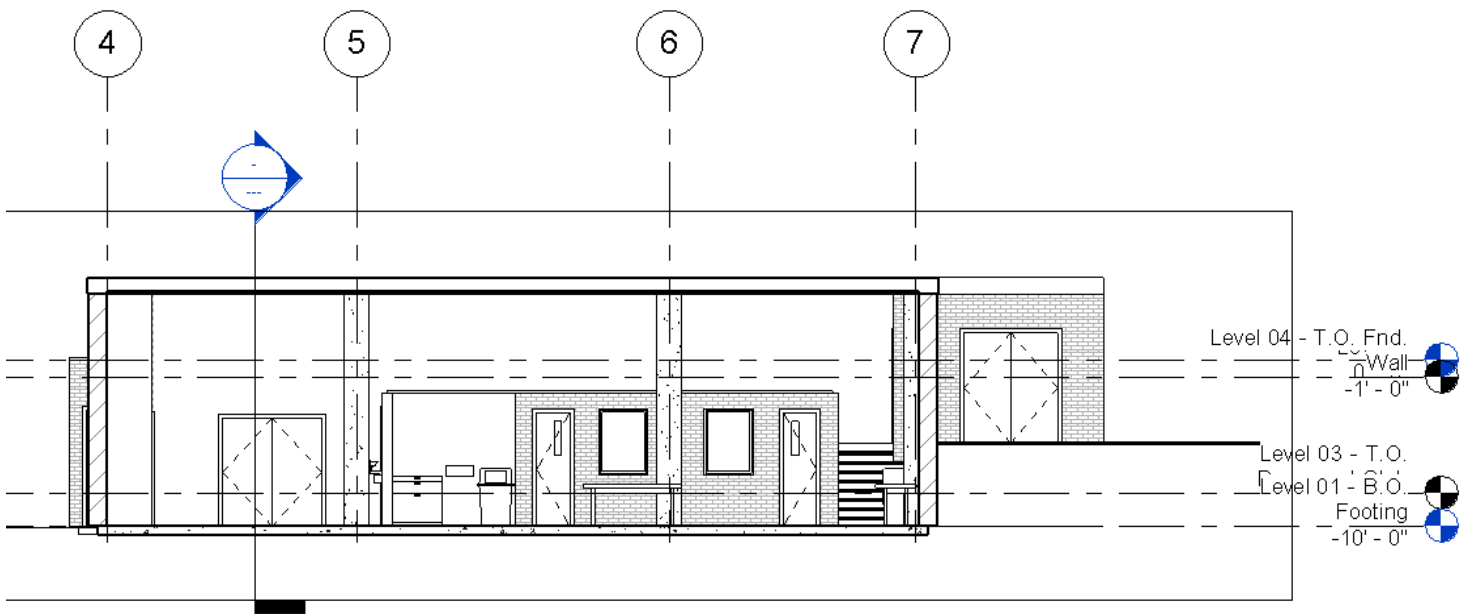
NOTE: Old shop on the left is within first floor of three-story Masters Center (full-building not shown)



ELIZABETHTOWN COLLEGE FABRICATION SHOP ("SHOP EXTENSION") 5/12/13
by Kaylee Werner, BS Engineering—Sustainable Design and Architectural Studies Minor 2015
EGR280 Engineering-Architecture Research with J. Wunderlich, PhD



EAST ELEVATION (i.e., view from lake)



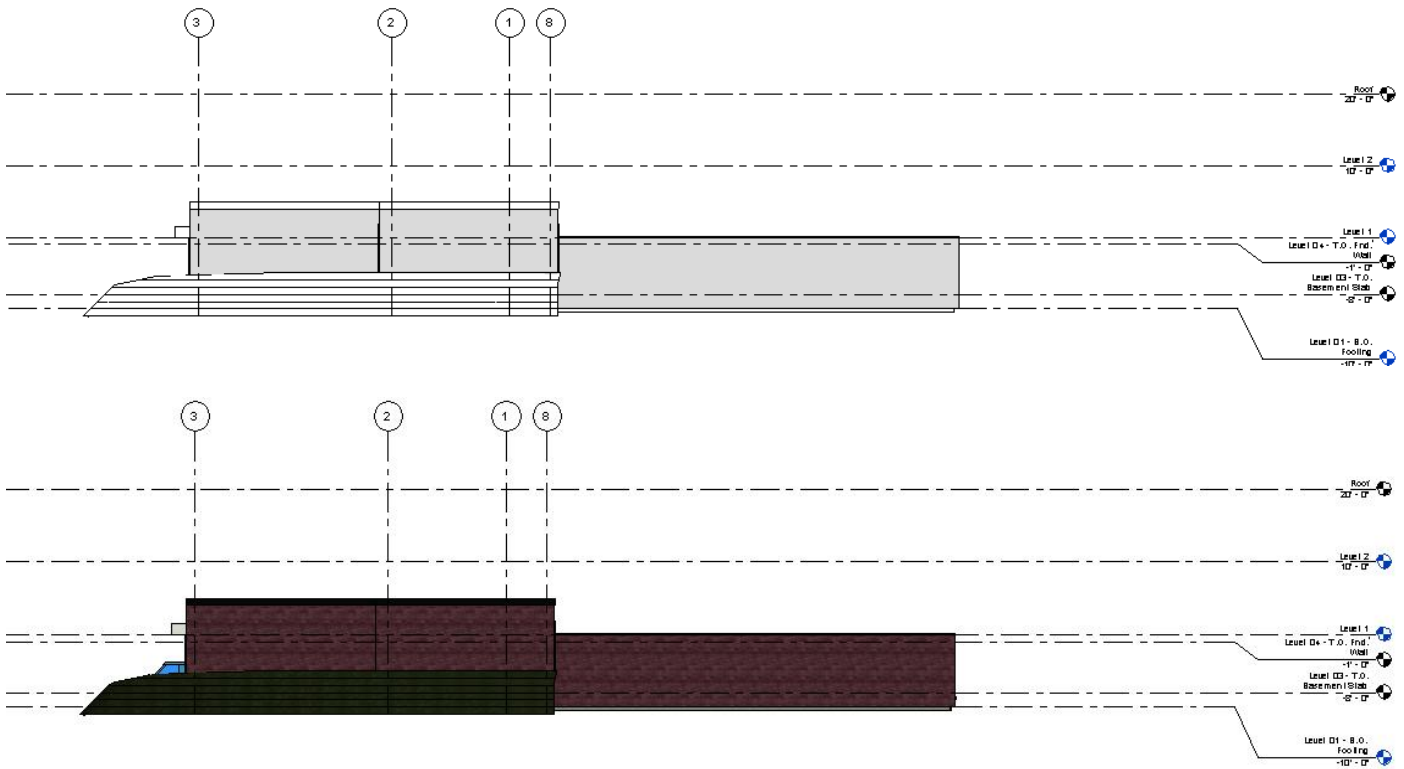
NORTH-SOUTH SECTION



ELIZABETHTOWN COLLEGE FABRICATION SHOP ("SHOP EXTENSION") 5/12/13

by Kaylee Werner, BS Engineering—Sustainable Design and Architectural Studies Minor 2015

EGR280 Engineering-Architecture Research with J. Wunderlich, PhD



NORTH ELEVATION (i.e., view from road)

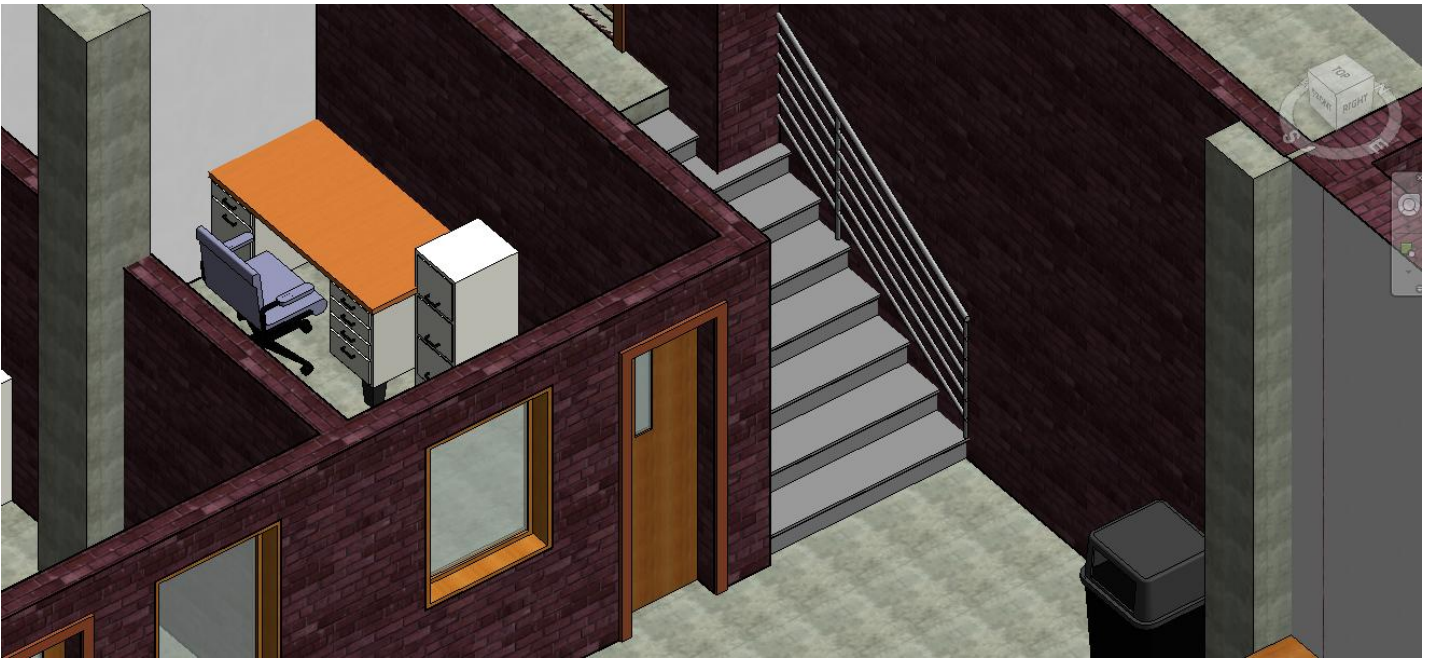
NOTE: Old shop on the right is within first floor of three-story Masters Center (full-building not shown)



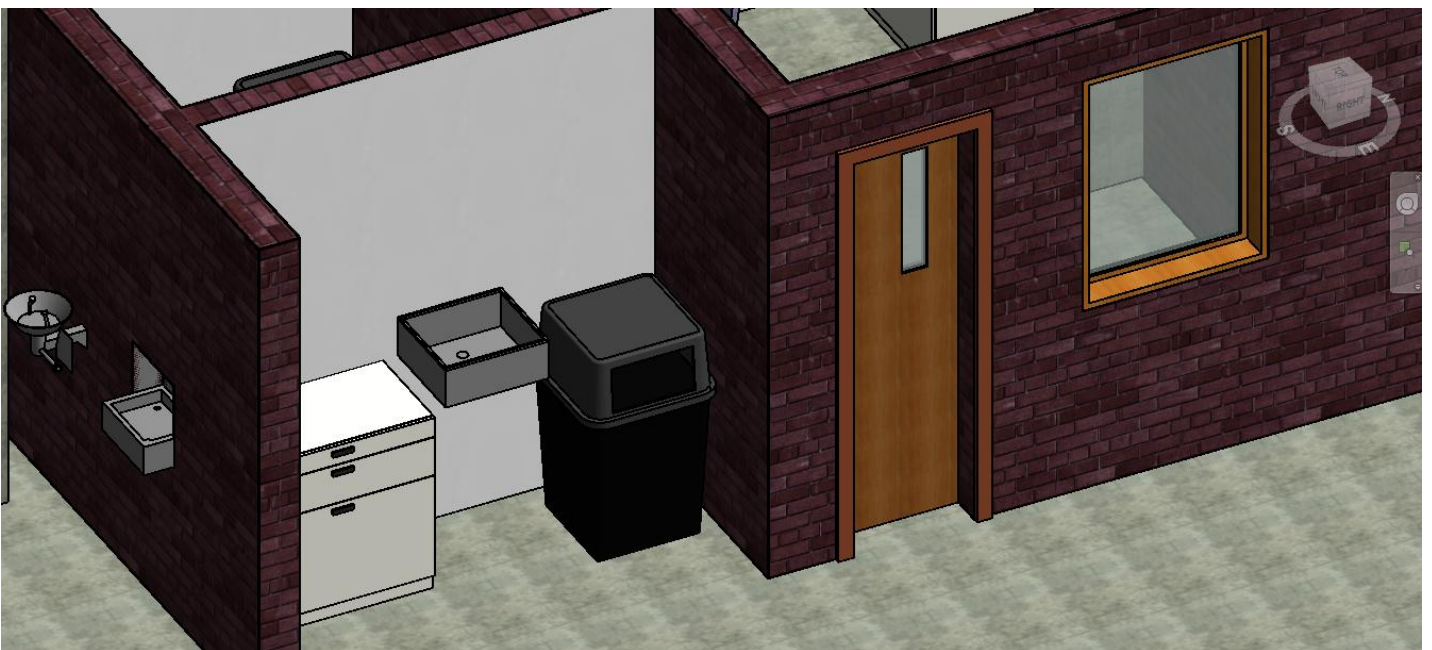
ELIZABETHTOWN COLLEGE FABRICATION SHOP ("SHOP EXTENSION") 5/12/13

by Kaylee Werner, BS Engineering—Sustainable Design and Architectural Studies Minor 2015

EGR280 Engineering-Architecture Research with J. Wunderlich, PhD



Offices near stairs leading to vestibule that leads to Gibble auditorium and outside.



Eyewash station, water fountain, sink, storage, and trash beside other office in new shop.

ELIZABETHTOWN COLLEGE FABRICATION SHOP ("SHOP EXTENSION") 5/12/13
by Kaylee Werner, BS Engineering—Sustainable Design and Architectural Studies Minor 2015
EGR280 Engineering-Architecture Research with J. Wunderlich, PhD



Offices



Office

ELIZABETHTOWN COLLEGE FABRICATION SHOP ("SHOP EXTENSION") 5/12/13

by Kaylee Werner, BS Engineering—Sustainable Design and Architectural Studies Minor 2015

EGR280 Engineering-Architecture Research with J. Wunderlich, PhD

MATERIAL QUANTITIES:

Assembly Code	Assembly Description	Wall Assembly	qs-Wall Quantities by Assembly			
			Calculated To Butt-End Dimensions		Length - Center To Center	Width
			Area	Volume		
B2010156	Ext. Wall - Brick Composite	Exterior - Brick on Mtl. Stud	350.88	405.70	23' - 10 7/8"	1.16
B2010156	Ext. Wall - Brick Composite	Exterior - Brick on Mtl. Stud	754.79	872.73	60' - 6 21/32"	1.16
B2010156	Ext. Wall - Brick Composite	Exterior - Brick on Mtl. Stud	539.78	624.12	56' - 0 15/16"	1.16
B2010156	Ext. Wall - Brick Composite	Exterior - Brick on Mtl. Stud	160.00	185.00	16' - 0"	1.16
B2010156	Ext. Wall - Brick Composite	Exterior - Brick on Mtl. Stud	549.22	635.03	56' - 0 15/16"	1.16
B2010156	Ext. Wall - Brick Composite	Exterior - Brick on Mtl. Stud	26.86	31.06	4' - 9 7/16"	1.16
B2010156	Ext. Wall - Brick Composite	Exterior - Brick on Mtl. Stud	312.55	361.39	31' - 10"	1.16
B2010156	Ext. Wall - Brick Composite	Exterior - Brick on Mtl. Stud	103.24	119.37	10' - 4 5/16"	1.16
B2010156	Ext. Wall - Brick Composite	Exterior - Brick on Mtl. Stud	371.00	428.97	26' - 6"	1.16
B2010156	Ext. Wall - Brick Composite	Exterior - Brick on Mtl. Stud	601.40	695.37	50' - 5 25/32"	1.16
B2010156	Ext. Wall - Brick Composite	Exterior - Brick on Mtl. Stud	285.50	330.11	21' - 1 15/16"	1.16
B2010156	Ext. Wall - Brick Composite	Exterior - Brick on Mtl. Stud	340.11	393.26	23' - 10 7/8"	1.16
B2010156	Ext. Wall - Brick Composite	Exterior - Brick on Mtl. Stud	38.50	44.52	2' - 9"	1.16
B2010156	Ext. Wall - Brick Composite	Exterior - Brick on Mtl. Stud	74.26	85.86	6' - 5 15/16"	1.16
B2010156	Ext. Wall - Brick Composite	Exterior - Brick on Mtl. Stud	22.31	25.80	2' - 9"	1.16
B2010	Exterior Walls	Generic - 6"	127.44	63.72	16' - 0"	0.50
B2010	Exterior Walls	Generic - 8"	218.24	145.49	16' - 6"	0.67
B2010	Exterior Walls	Generic - 8"	30.33	20.22	1' - 6"	0.67
B2010	Exterior Walls	Generic - 8"	70.93	47.28	7' - 4 7/8"	0.67
B2010	Exterior Walls	Generic Inside Wall - 8" 2	105.29	70.19	13' - 4 7/8"	0.67
B2010	Exterior Walls	Generic Inside Wall - 8" 2	100.67	67.11	19' - 0"	0.67
B2010	Exterior Walls	Generic Inside Wall - 8" 2	99.96	66.64	13' - 4 7/8"	0.67
B2010	Exterior Walls	Generic Inside Wall - 8" 2	99.96	66.64	13' - 4 7/8"	0.67
B2010	Exterior Walls	Generic Inside Wall - 8" 2	81.63	53.52	13' - 4 7/8"	0.67
C1010145	Partitions - Drywall w/ Metal Stud	Interior Toilet wall - 6 1/8" Partition	59.33	30.28	8' - 1"	0.51
Grand total: 25			5524.19	5869.40		

qs-Structural Column Schedule							
Assembly C	Count	Length	Description	Assembly Description	Type	Comments	Base Level
B10	12	14.00		Superstructure	18 x 18		Level 01 -
Grand total: 12							

qs-Roof Quantities by Assembly						
Assembly Code	Assembly Description	Area	Roof Assembly	Description	Comments	
B1020	Roof Construction	2927.58	Fab Lab Roof- 12" 2			
Grand total: 1		2927.58				

qs-Floor Quantities by Assembly						
Assembly Code	Floor Assembly	Area (Defined By Modeler)	Perimeter	Description	Comments	
B1010	Concrete Slab - 6"	4150	592.58			
Grand total: 6		4150	592.58			

qp-Plumbing Fixture Quantities							
Assembly Code	Assembly Description	Count	Unit Description	Type	Description	CW Connection	HW Cor
D2010110	Water Closets - Single	1	Toilet-Commercial-Wall-3	15" Seat Height			
		2	Sink - Work	20"x18"			
		1	Lavatory - Vanity	30"x18" - Private			
		1	Emergency Eye Wash	Standard			
		1	Drinking Fountain - Semi-	Standard			
Grand total							

