



ARCHITECTURE DESIGN THEORY

PART 4: ORGANIZATION

© JT Wunderlich PhD 2019

<http://users.etaown.edu/w/wunderjt/>

ARCHITECTURE DESIGN THEORY



LECTURE SERIES

- ❑ PART 1 PRIMARY ELEMENTS
- ❑ PART 2 FORM
- ❑ PART 3 FORM & SPACE
- ❑ **PART 4 ORGANIZATION** *(This Lecture)*
- ❑ PART 5 CIRCULATION
- ❑ PART 6 PROPORTION & SCALE
- ❑ PART 7 PRINCIPLES

[PPTX](#) [MP4](#) [YouTube](#) [PDF](#)

[PPTX](#) [MP4](#) [YouTube](#) [PDF](#)

[PPTX](#) [MP4](#) [YouTube](#) [PDF](#)

[PPTX](#) [MP4](#) [YouTube](#) [PDF](#)

[PPTX](#) [MP4](#) [YouTube](#) [PDF](#)

[PPTX](#) [MP4](#) [YouTube](#) [PDF](#)

[PPTX](#) [MP4](#) [YouTube](#) [PDF](#)

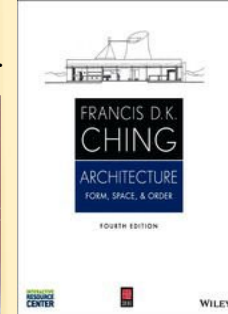
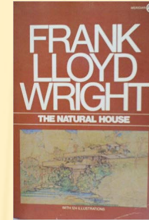
SOURCES

* Personal Architecture projects, frequent international travel, BS Architectural Engineering (U.Texas 84), plus 1-1/2 years of Urban Design (UCSD 1986-87)

COURSE TEXTBOOKS

[1] Ching, Francis D.K. *Architecture: Form, Space, and Order*. 4 ed., Wiley, 2014.

[2] Wright, Frank Lloyd. *The Natural House*. Bramhall House; 1954.



OTHER SOURCES

[3] Storrer, William A. *The Architecture of Frank Lloyd Wright, Complete Catalog*. 4TH ed. U. of Chicago Press, 2017.

[4] Bacon, Edmond. *Design of Cities*. Thames & Hudson Ltd, 1978.

[5] Lynch, Kevin. *The Image of The City*. MIT Press, 1960.

[6] Wright, Frank Lloyd. *Testament*. New York, Bramhall House, 1957.

[7] Froebel; *Brief History of the Kindergarten*. Froebel Gifts, 2013.

<http://www.froebelgifts.com/history.htm>

[8] *PENN Rare Book and Manuscript: Frank Lloyd Wright's Paternal Family*. Penn Library. University of Pennsylvania, Feb. 20, 2014.

<http://www.library.upenn.edu/rbm/featured/mscoll822.html>

[9] Huxtable, Ada Louise. *Frank Lloyd Wright*. New York Times, Oct. 31, 2004.

<https://www.nytimes.com/2004/10/31/books/chapters/frank-lloyd-wright.html>

[10] Burns, Ken, and Novick, Lynn. *Frank Lloyd Wright: A Film by Ken Burns and Lynn Novick DVD*. PBS Home Video, August 28, 2001.

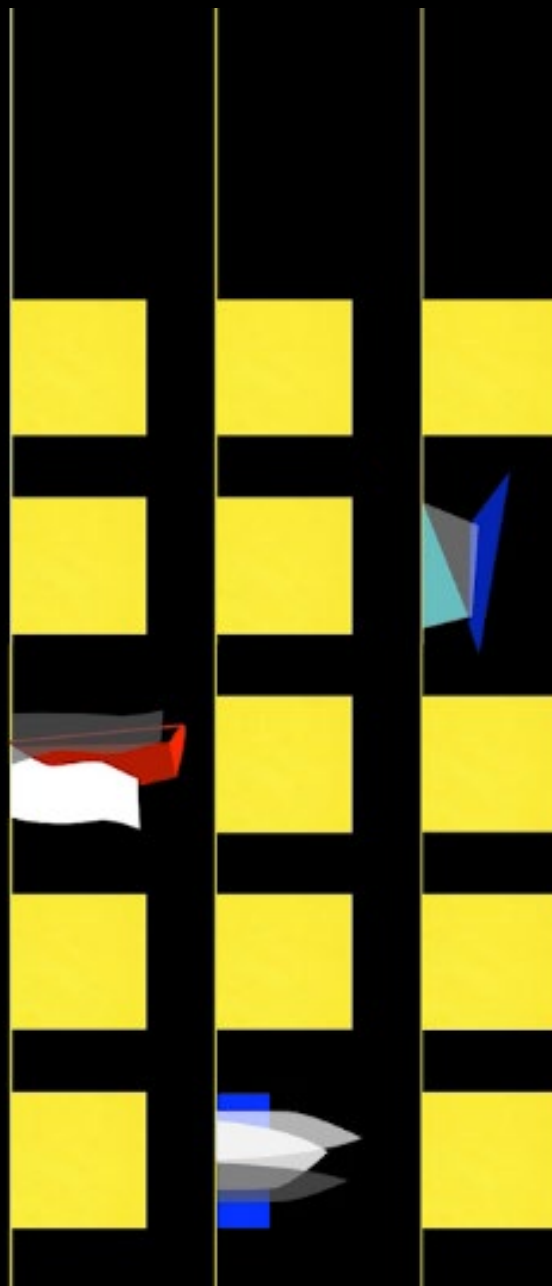
[11] Wright, Frank Lloyd. *The Art and Craft of the Machine*, Vol. 8, No. 2 pp. 77-81, 83-85, 87-90, May, 1901.

<https://www.jstor.org/stable/pdf/25505640.pdf>

[12] Wright, Frank Lloyd. *In the Cause of Architecture*. Architectural Record, vol. XXIII, March 1908.

[13] Wright, Frank Lloyd. *In the Cause of Architecture; Second Paper*. Architectural Record, May 1914.

Perception of
irregularities relies on
what we assume is
regular and normal [1]





However some Japanese also “stand out” in Japan

Kyoto
Japan
2013



The unusual can becomes the new normal



Shinkansen Bullet Train from Tokyo to Osaka in 2013

The unusual can become the new normal

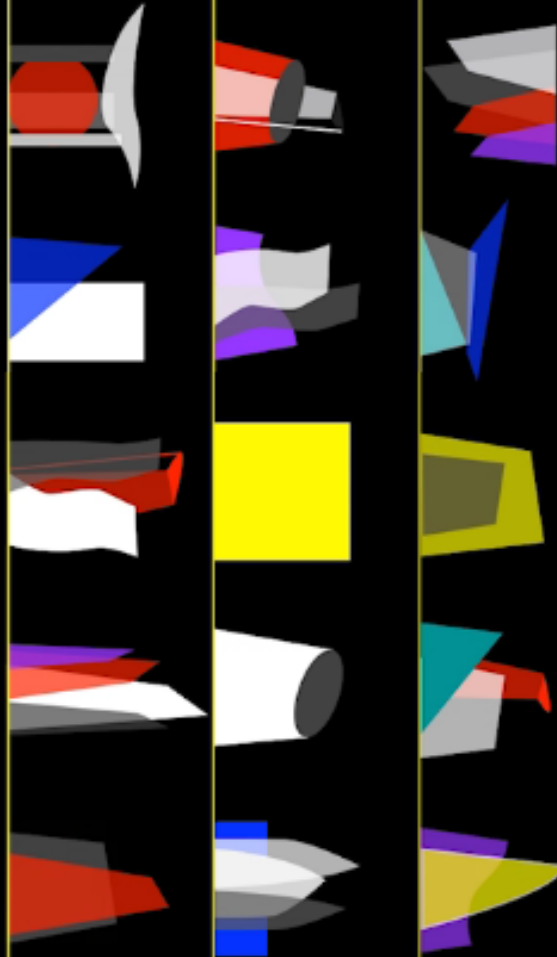


VIDEO'S

<https://www.youtube.com/watch?v=g875XXuJFT0>

<https://www.youtube.com/watch?v=O6eSNiNYKvs>

BEING UNUSUAL
can become
the new
normal, with
everything
INTENTIONALLY
DIFFERENT



BEING UNUSUAL can become the new normal,
with everything INTENTIONALLY DIFFERENT

Narita Japan 2013

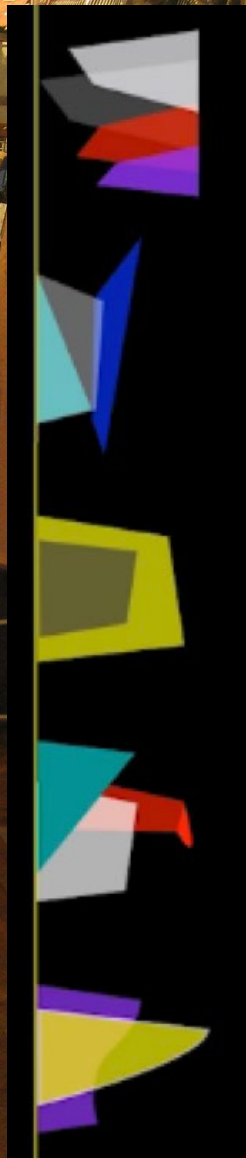


店内一部 SALE

EVERIC
to
INSTAGRAM
SPECIAL PRICE
¥2625
(tax in)

**JUST WANT
FEELING
IT ALL**

**BUT NOT GOOD
TO YOU**



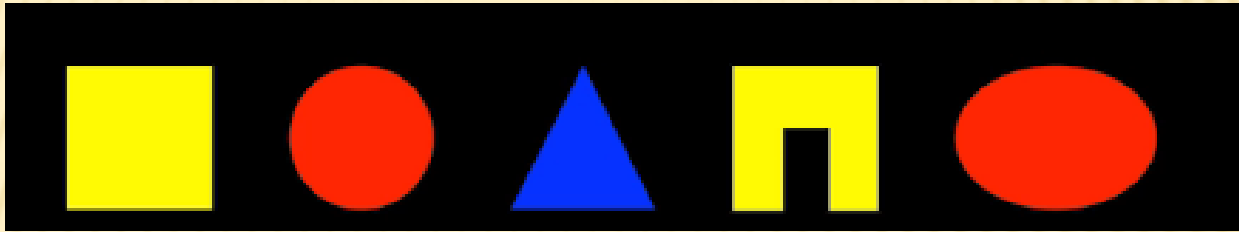
¥2300~

BEING UNUSUAL can become the new normal,
with everything INTENTIONALLY DIFFERENT



REGULAR & IRREGULAR FORMS

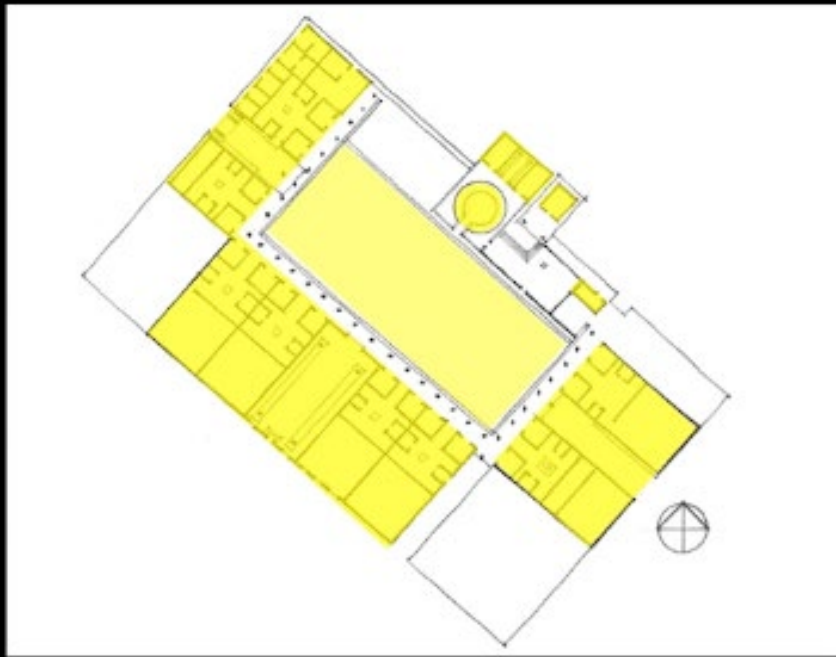
“Regular forms have parts related in a consistent and orderly manner – stable and symmetrical about one or more Axis



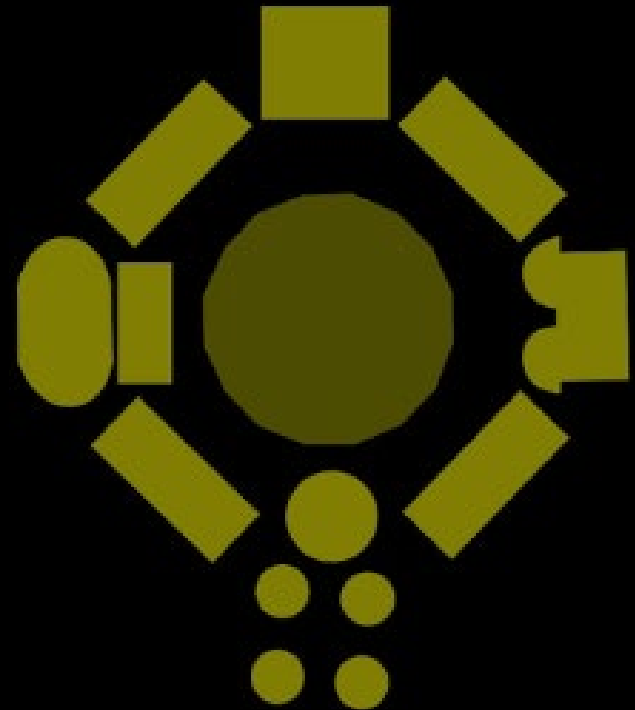
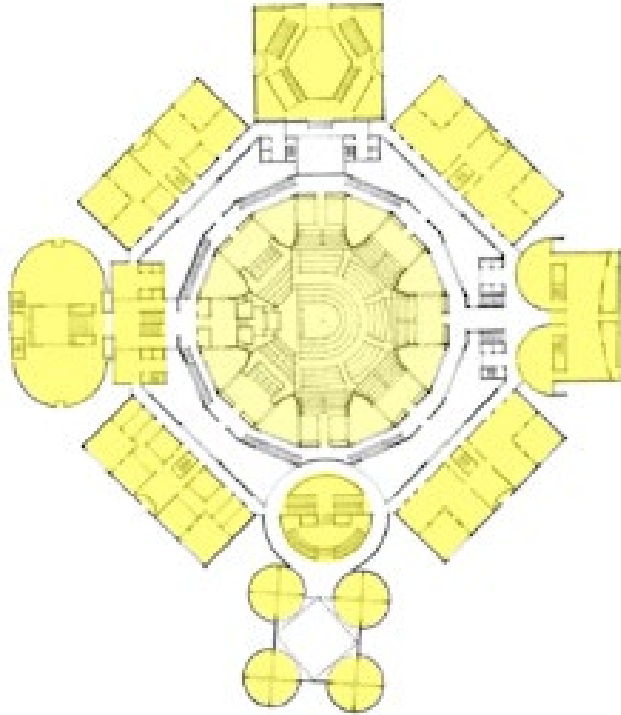
“Irregular forms have dissimilar parts related in an inconsistent manner – they’re generally asymmetrical and more dynamic” [1]



Secondary spaces may be equivalent in function, form, and size; And create a regular or symmetrical composition [1]



Secondary spaces may differ in form or size to respond to function, express importance, or acknowledge surroundings [1]



ORGANIZATION of FORMS and SPACES

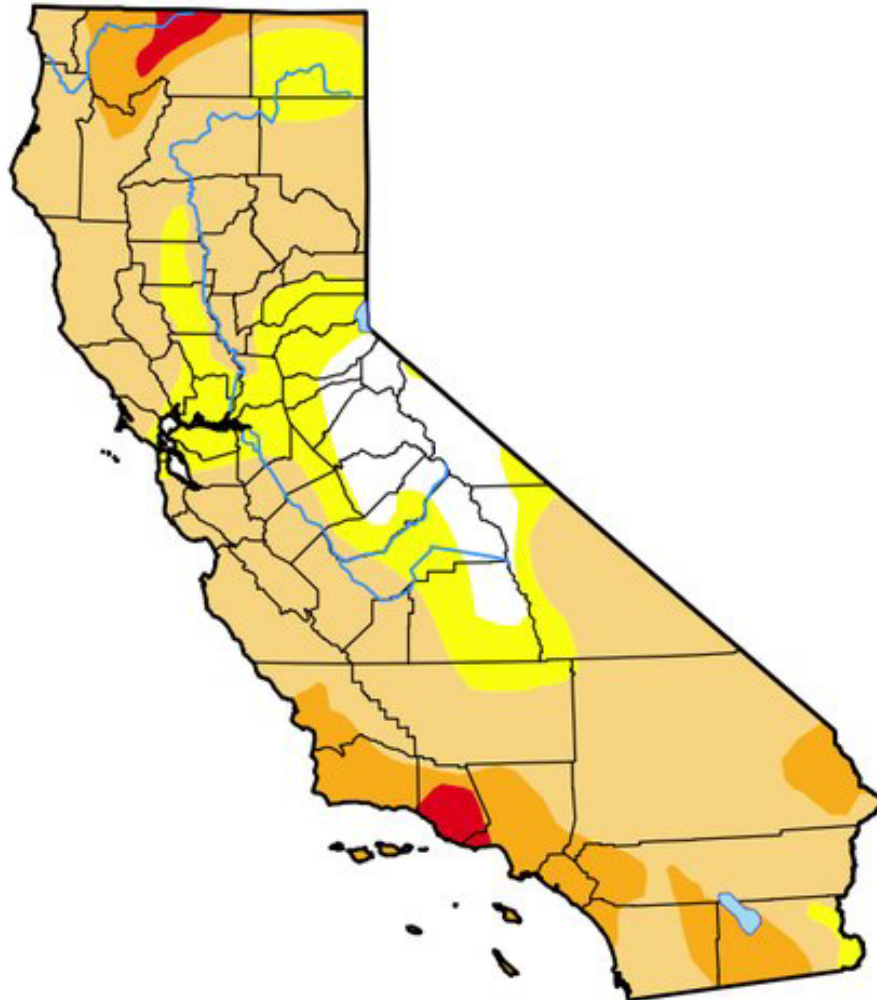
- A) *in Urban Design*
- B) *in Architecture*

ORGANIZATION of FORMS and SPACES

A) *in Urban Design*

U.S. Drought Monitor California

January 8, 2019
(Released Thursday, Jan. 10, 2019)
Valid 7 a.m. EST



Drought Conditions (Percent Area)

	None	D0-D4	D1-D4	D2-D4	D3-D4	D4
Current	7.77	92.23	75.17	14.12	1.55	0.00
Last Week <small>01-01-2019</small>	7.77	92.23	75.17	14.12	2.10	0.00
3 Months Ago <small>10-09-2018</small>	15.16	84.84	47.94	22.77	4.87	0.00
Start of Calendar Year <small>01-01-2019</small>	7.77	92.23	75.17	14.12	2.10	0.00
Start of Water Year <small>09-25-2018</small>	12.18	87.82	47.97	22.82	4.94	0.00
One Year Ago <small>01-09-2018</small>	53.58	46.42	12.69	0.00	0.00	0.00

Intensity:

- D0 Abnormally Dry
- D1 Moderate Drought
- D2 Severe Drought
- D3 Extreme Drought
- D4 Exceptional Drought

The Drought Monitor focuses on broad-scale conditions. Local conditions may vary. See accompanying text summary for forecast statements.

Author:

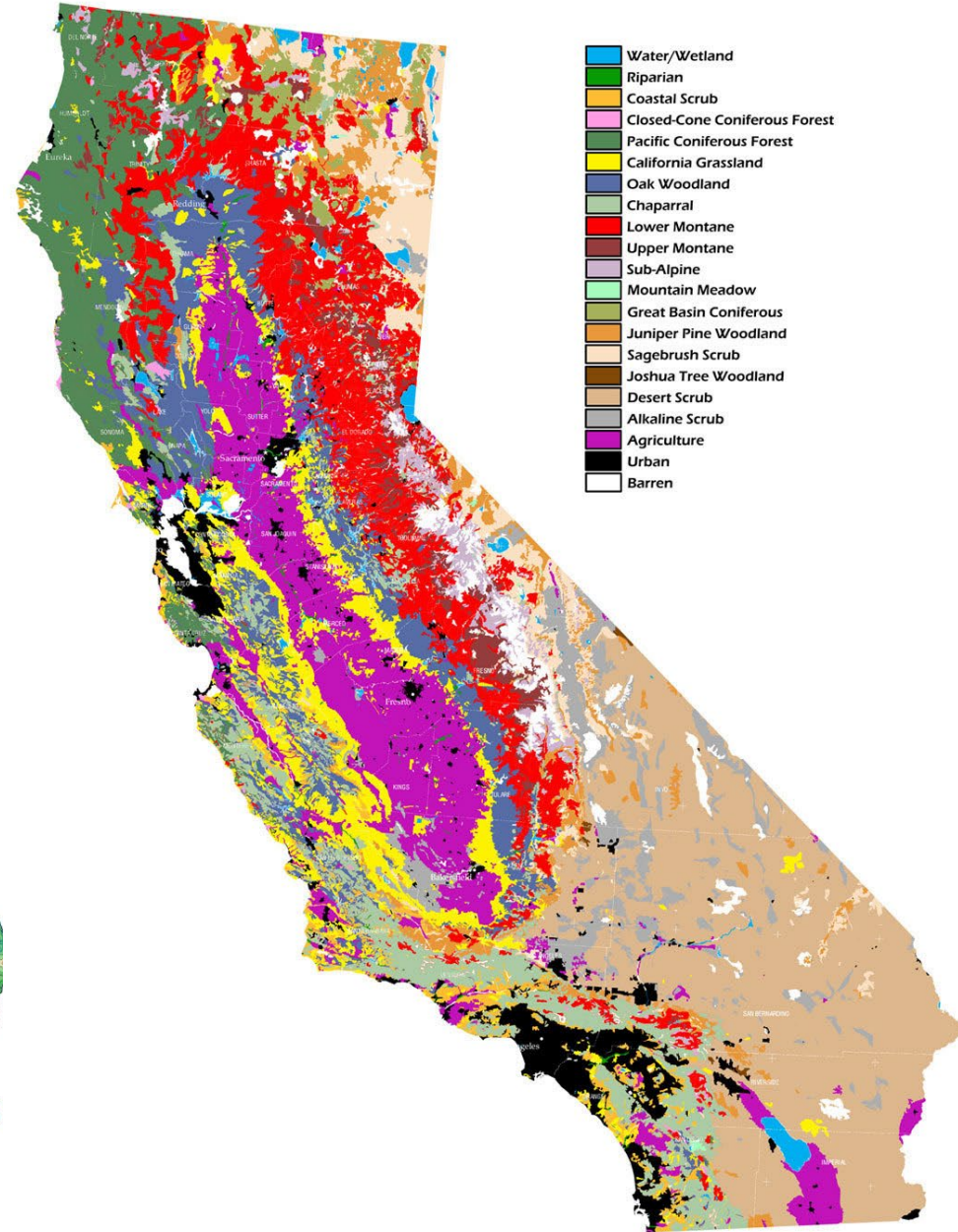
Brad Pugh
CPC/NOAA



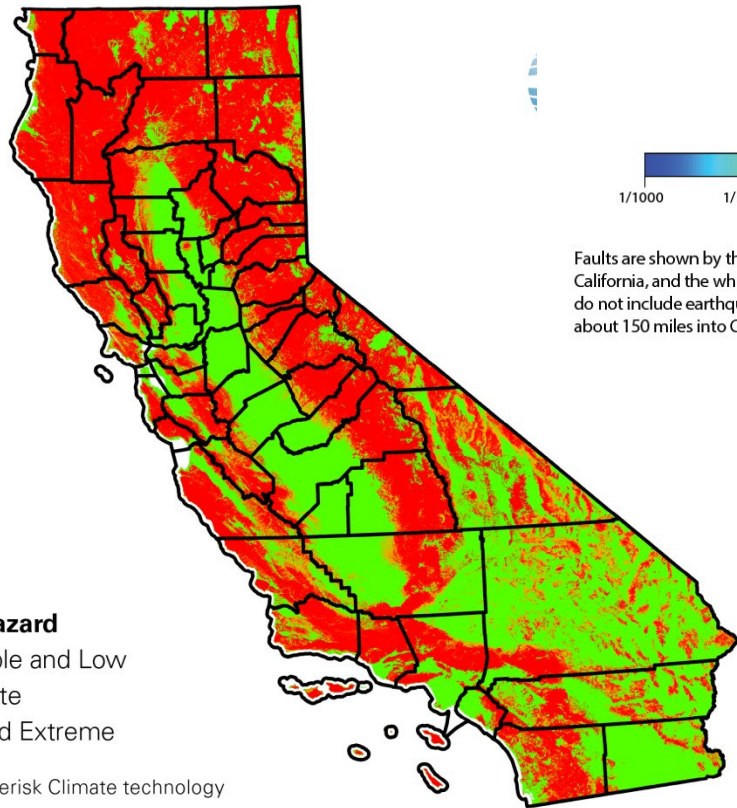
Organization of Terrain and Vegetation

California Vegetation/Wildlife Habitat Regions

© 2004 Jeremiah Easter



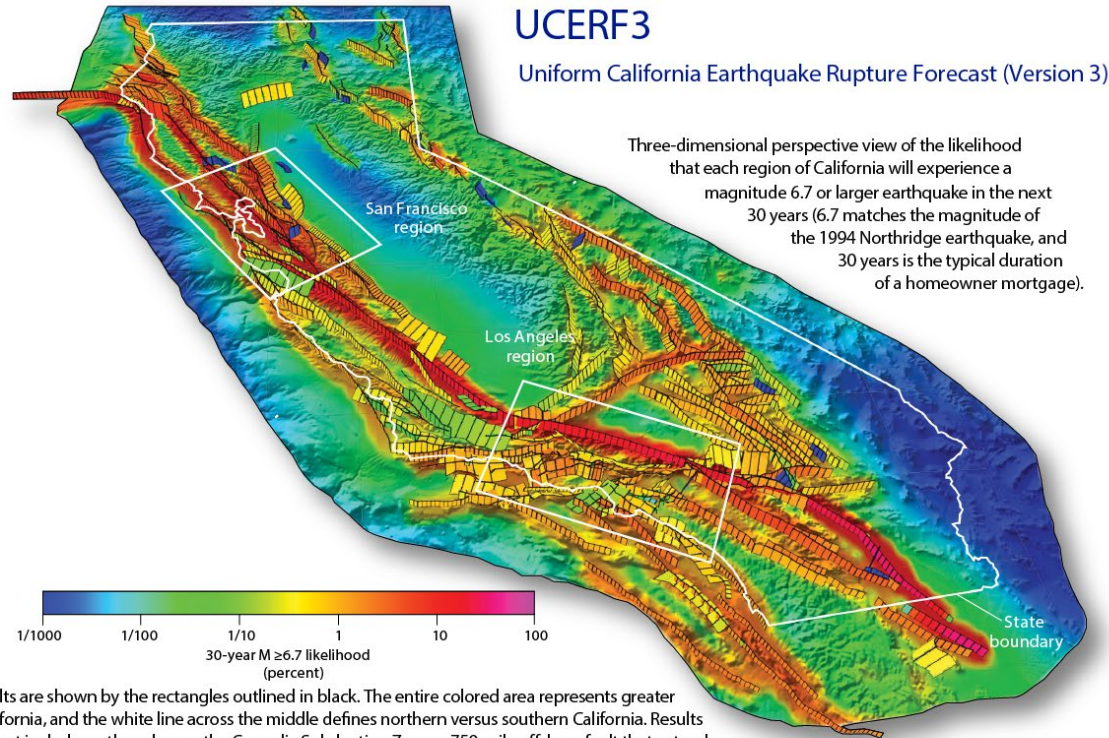
Organize Locating Hazards – Wildfires, Earthquakes



Wildfire Hazard

- Negligible and Low
- Moderate
- High and Extreme

Powered by Verisk Climate technology



UCERF3

Uniform California Earthquake Rupture Forecast (Version 3)

Three-dimensional perspective view of the likelihood that each region of California will experience a magnitude 6.7 or larger earthquake in the next 30 years (6.7 matches the magnitude of the 1994 Northridge earthquake, and 30 years is the typical duration of a homeowner mortgage).

Faults are shown by the rectangles outlined in black. The entire colored area represents greater California, and the white line across the middle defines northern versus southern California. Results do not include earthquakes on the Cascadia Subduction Zone, a 750-mile offshore fault that extends about 150 miles into California from Oregon and Washington to the north.

<https://www.scec.org/ucerf>

<http://ameliabusinessdirectory.com/world/california-wildfire-map/attachment/california-wildfire-map-from-art-en-provence-3>

CLUSTERED FORMS

“Clustered forms organize to **size, shape, or proximity**;

And can incorporate forms of various shapes, sizes, and orientations...

Cluster housing in **vernacular architecture** of various cultures...

Individuality and diversity of houses is maintained as part of an ordered whole” [1]

Venice Italy



<https://memeguy.com/photo/307435/aerial-view-of-venice-italy>

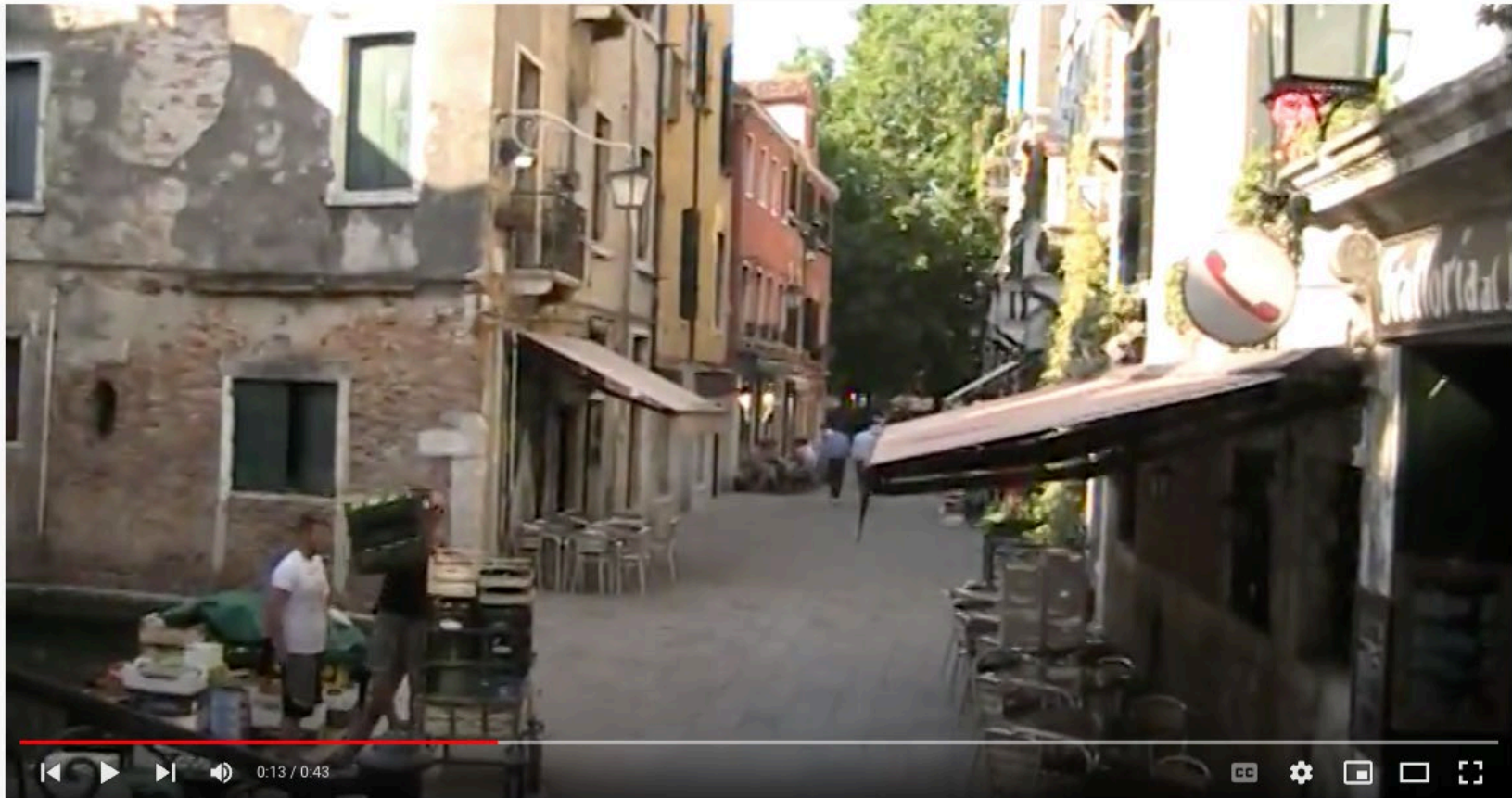
CLUSTERED FORMS



URBAN DESIGN

“Individuality and diversity of houses is maintained as part of an ordered whole” [1]

<https://www.youtube.com/watch?v=Ez57WfP1cS4&list=PLK3MJsXEYEQLDPiS7DCkap15n0e2FEZ3e&index=6>



2017 Europe 11, Venice Near Fish Market

13 views • Jun 27, 2017

0 DISLIKE SHARE DOWNLOAD SAVE ...



Joseph Wunderlich
30 subscribers

ANALYTICS EDIT VIDEO

2017 Europe (with family): Bavaria, Salzburg, Vienna Hi-Tech Conference, Univ. of Venice Architecture School, Venice fun with great Italian friends

CLUSTERED FORMS

URBAN DESIGN



“Individuality and diversity of houses is maintained as part of an ordered whole” [1]

<https://www.youtube.com/watch?v=94hpUJFKtkk&list=PLK3MJsXEYEQLDPiS7DCkap15n0e2EEZ3e&index=5>



2017 Europe 12, Venice Near U of Venice Library Plus Karla Call

8 views • Jun 27, 2017

👍 0 👎 DISLIKE ➦ SHARE ⬇️ DOWNLOAD ⚙️ SAVE ...



Joseph Wunderlich
30 subscribers

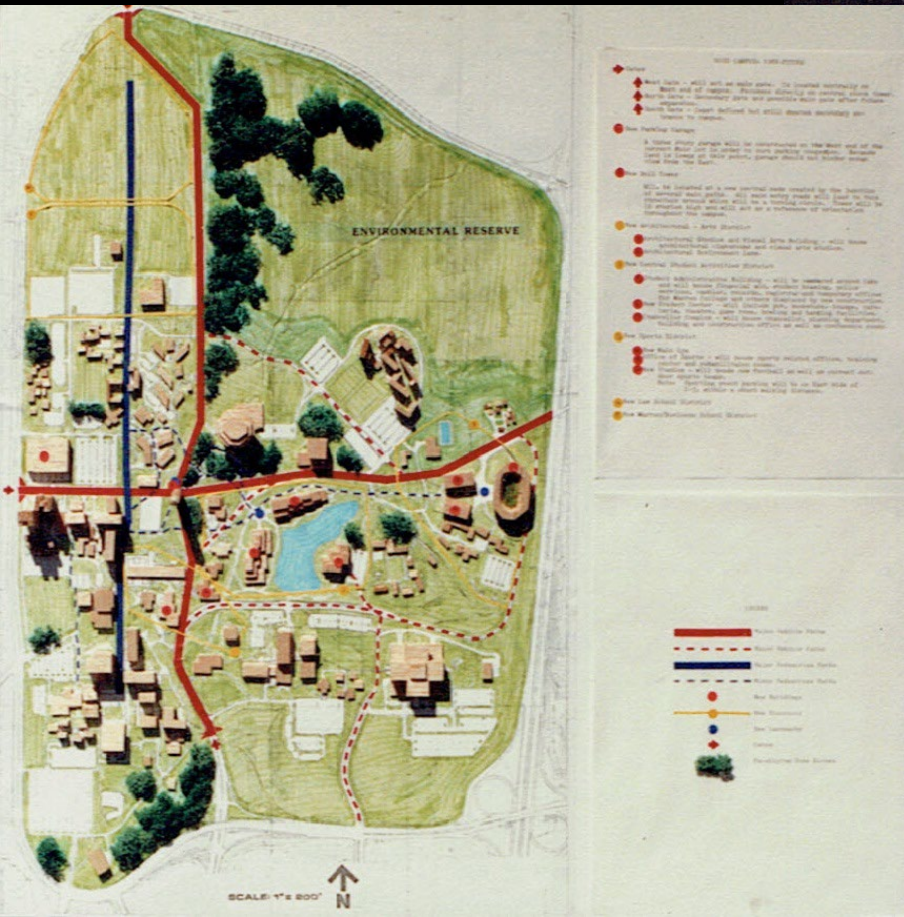
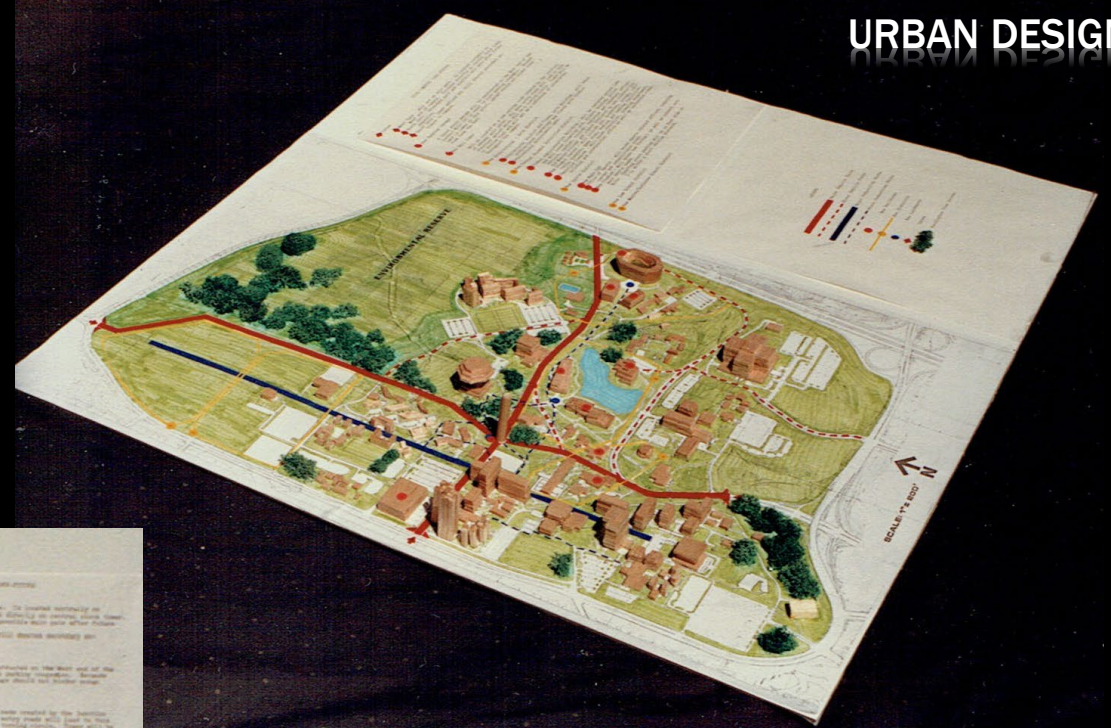
ANALYTICS EDIT VIDEO

2017 Europe (with family): Bavaria, Salzburg, Vienna Hi-Tech Conference, Univ. of Venice
Architecture School, Venice fun with great Italian friends

Just watch first two minutes

UCSD Campus Master Plan
by JT Wunderlich 1987

UCSD USP174 Urban Design Project



- PATHS
- EDGES
- DISTRICTS
- NODES
- LANDMARKS

2019 frequent talks with Developers, Architects, and Engineers about new dorms around the College DELL where Graduations and Convocations are held

2011 Campus Master Plan Update

ELIZABETHTOWN COLLEGE
PRELIMINARY LAND DEVELOPMENT PLAN

SEPTEMBER 23, 2011

DERCK & EDSON
ASSOCIATES
LANDSCAPE ARCHITECTS - CIVIL ENGINEERS - LAND PLANNERS



EAST LEMMON ST ROAD

2019 frequent talks with Developers, Architects, and Engineers about new dorms around the College **DELL** where Graduations and Convocations are held

Including demolishing these two existing dorms, and then building three new dorms around the **DELL**



2019 frequent talks with Developers, Architects, and Engineers about new dorms around the College **DELL** where Graduations and Convocations are held

PRESERVATION is a high priority, including old-growth trees



2019 frequent talks with Developers, Architects, and Engineers about new dorms around the College DELL where Graduations and Convocations are held

PRESERVATION is a high priority, including old-growth trees



2019 frequent talks with Developers, Architects, and Engineers about new dorms around the College DELL where Graduations and Convocations are held

PRESERVATION is a high priority, including old-growth trees



2019 photo by Google

2019 frequent talks with Developers, Architects, and Engineers about new dorms around the College **DELL** where Graduations and Convocations are held

PRESERVATION is a high priority, including old-growth trees



2019 photo by Google



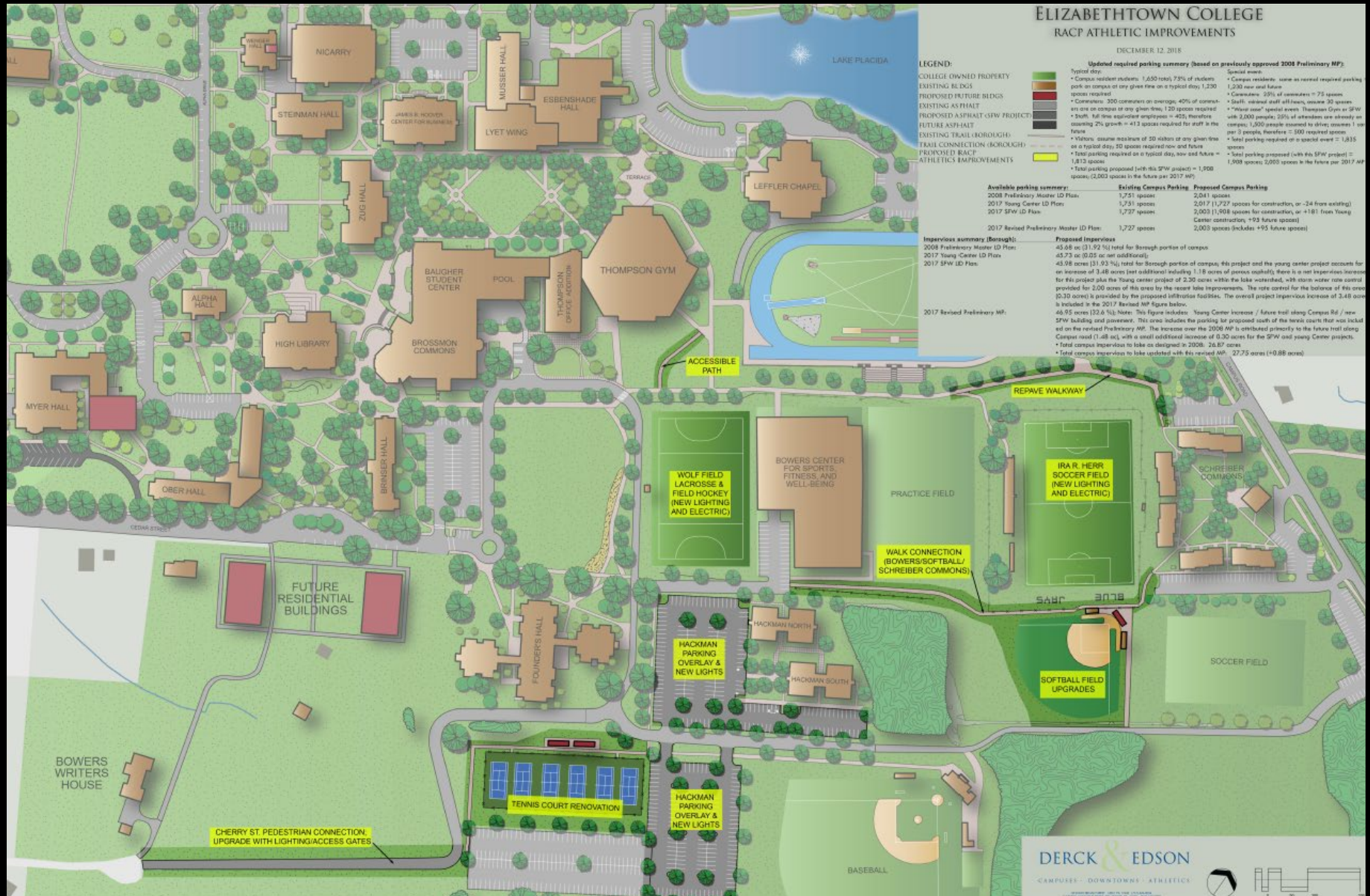
1999 photo by J Wunderlich

The 2019 \$40M [P3](#) development of new dorms around the DELL was postponed indefinitely due to covid and other priorities

2019 Campus Improvements (plan by Derck & Edson)

\$1M RACP Grant to Elizabethtown College

with help from Architecture Students to raise matching \$1M required by Grant



2019 Campus Improvements *(plan by Derck & Edson)*

\$1M RACP Grant to Elizabethtown College

with help from Architecture Students to raise matching \$1M required by Grant



\$1M RACP Grant to Elizabethtown College

with help from Architecture Students to raise matching \$1M required by Grant

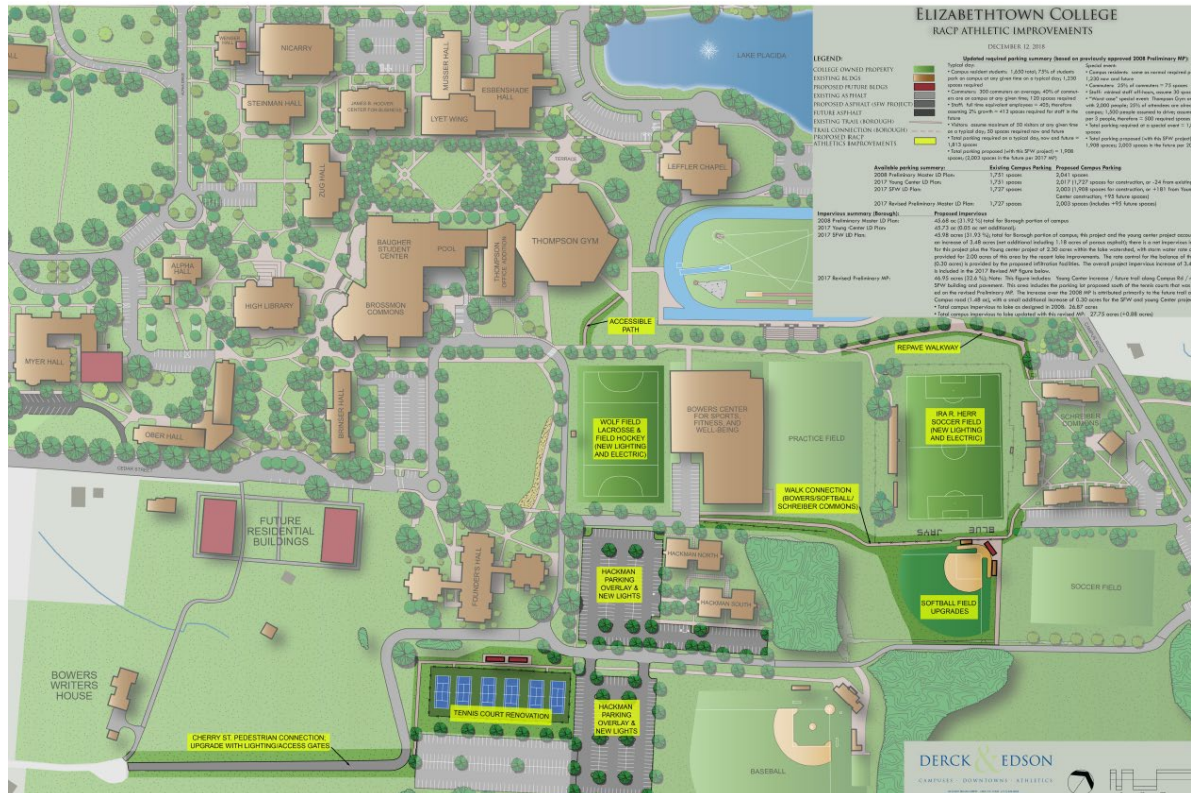


\$1M RACP Grant

With help from 2019 Architecture Students to raise matching \$1M

Your assignment is to create the following:

- A) 3D Revit renderings of highlights of softball field upgrades.
(EXTRA: all of these improvements, and the entire field and surroundings fully rendered in 3D, in Revit)
- B) 3D Revit renderings of new lighting for Wolf Field for lacrosse & field hockey and Herr Field for soccer, per existing new specifications.
(EXTRA: details of field markings, bleachers, and surroundings fully rendered in 3D, in Revit)
- C) 3D Revit renderings of highlights of new tennis courts and bleachers
(EXTRA: all of these improvements and the courts, fencing, and surroundings fully rendered in 3D, in Revit)



2011 update to 1999 Master Plan by Derck & Edson:



*Six Derck & Edson proposed buildings are not fixed
(i.e., Student designs likely completely different)*

Student housing for Cedar Hill including an activity center
for musical performances, art exhibitions, and a Café

Also a new quadrangle that extends to the library

- ✘ Design on the Elizabethtown College Cedar Hill site, housing for approximately 100 students in apartment/townhouse style units designed for 4 students, each containing a kitchen, laundry, two bathrooms, and a living room. Units should be grouped into a cluster of buildings, with preferably staggered connectivity between units. The 2011 concept drawing by Derck & Edson above, with six separate buildings, is not fixed – in either the number of buildings, or their orientations.
- ✘ It is optional whether or not you wish to end Cedar Street before your new Quadrangle that you will design from the library to your housing cluster, and to create a new main entrance to the College on Cherry Street leading to the center of campus as shown. But never-the-less design a new Quadrangle from your new housing, down to the library.
- ✘ You are certainly allowed to move as much dirt as you wish (i.e., in the cut & fill “grading” of your site), including possibly making a continuous, or stepped, change in elevation from the elevation line at 520’ located at the Cherry Street extension side of your site, down to the 500’ elevation at the library.
- ✘ Provide one parking space on site for every 4 students.
- ✘ This development should be consistent with the [Elizabethtown Borough Regional Plan](#) and the **Elizabethtown College Master Plan** *including*
 - + [the 1999 Master Plan \(Chapter1\)](#)
 - + [the seven 1999 Site Analysis Maps](#)
 - + [the 2011 Plan Update](#)
 - + [the 1999 Proposal to move the main entry from Cedar Street to Cherry Street.](#)

PROPOSED MOVING OF MAIN ENTRY on CEDAR STREET to CHERRY STREET
1999 Elizabethtown College Master Plan

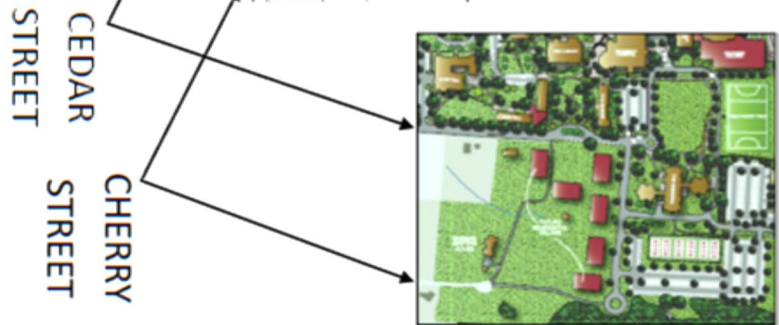
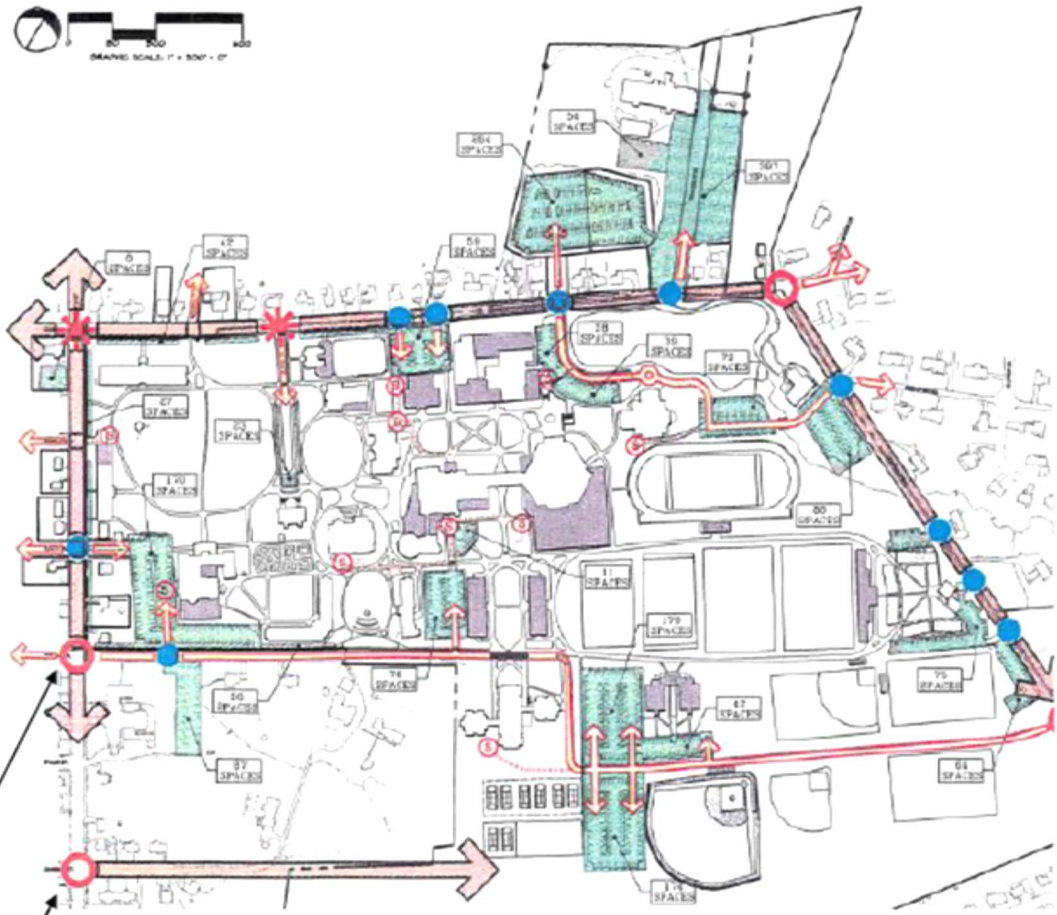
Legend

- MAJOR ROAD
- MINOR ROAD
- PRIMARY VEHICULAR ENTRANCE ONTO CAMPUS
- SECONDARY VEHICULAR ENTRANCE ONTO CAMPUS
- TERTIARY VEHICULAR ENTRANCE ONTO CAMPUS
- PARKING AREAS
- SERVICE ENTRANCE
- SERVICE ACCESS

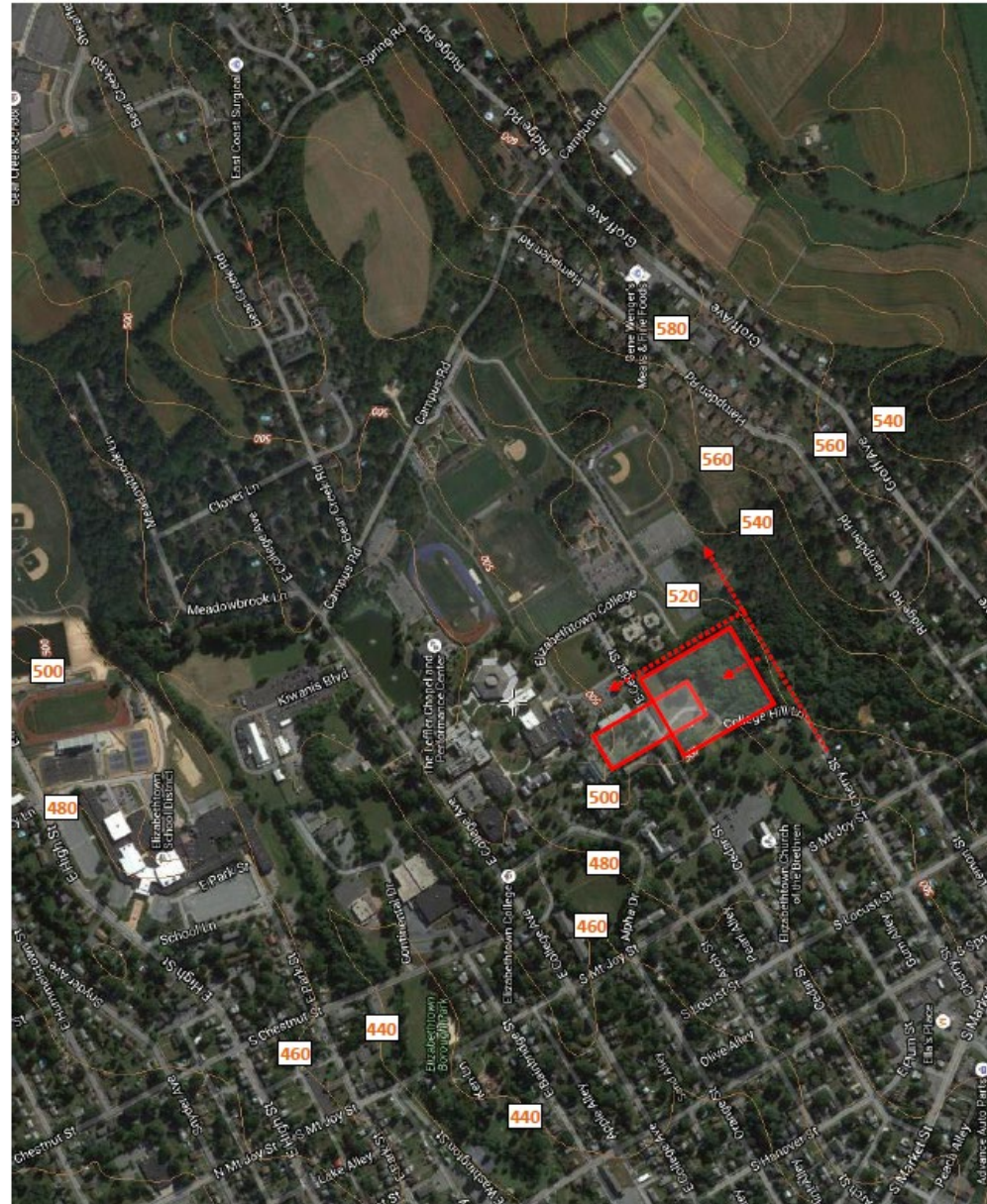
Proposed Vehicular Circulation
 MP-02
 October 14, 1999

Elizabethtown College

Derek & Edson Associates, LLP
 Architects, Planners, Engineers, and Scientists



CEDAR HILL HOUSING



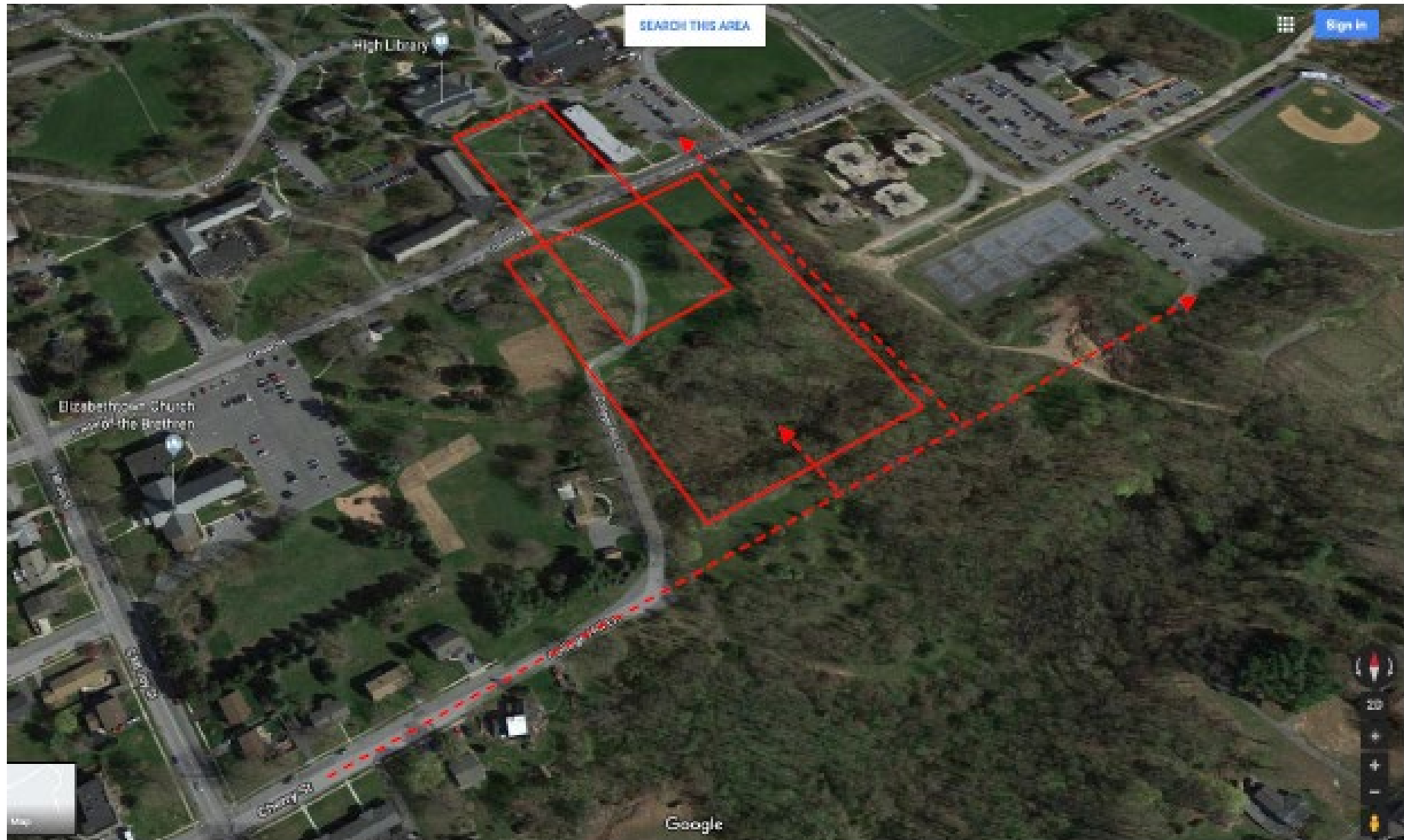


CEDAR HILL HOUSING

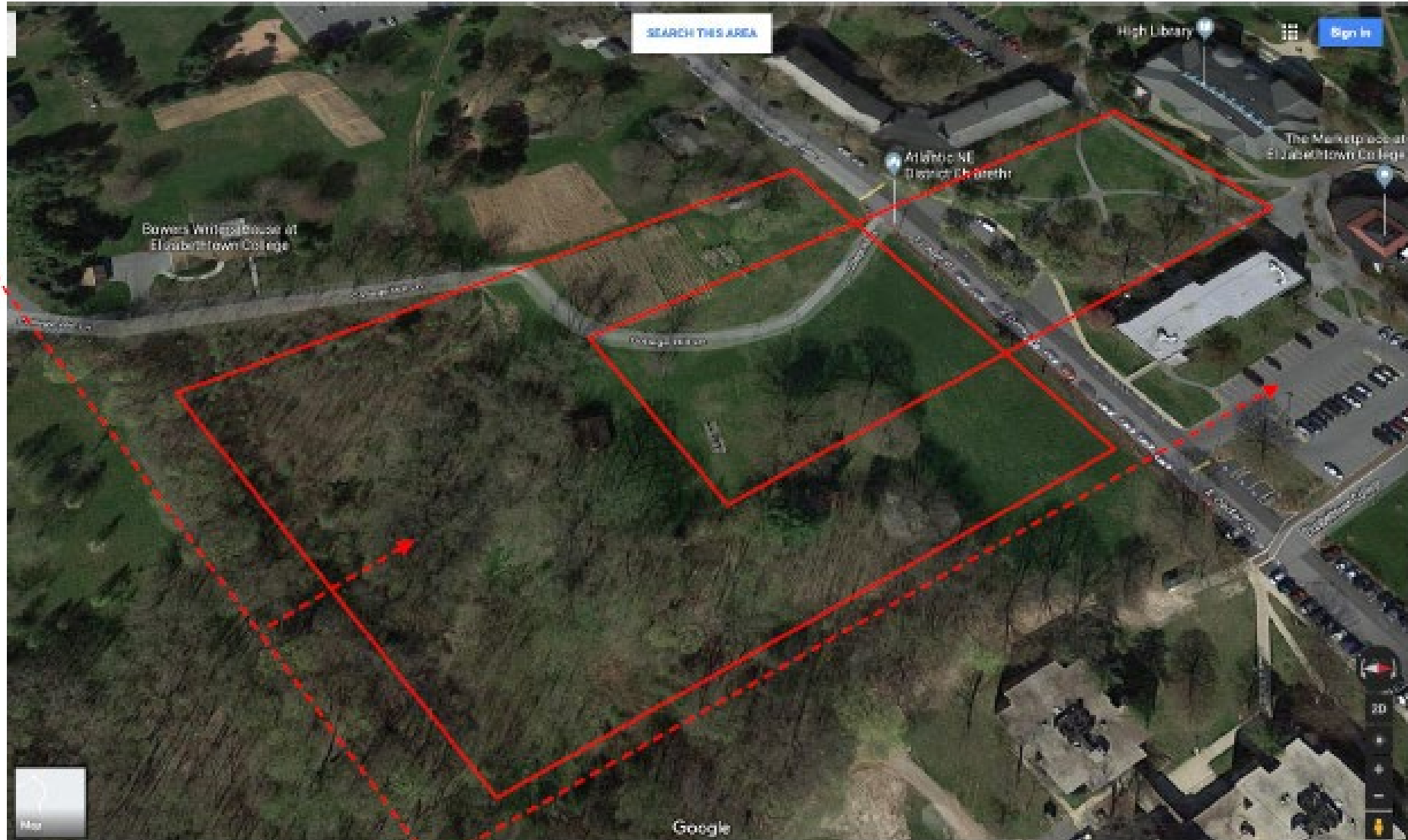
NORTH



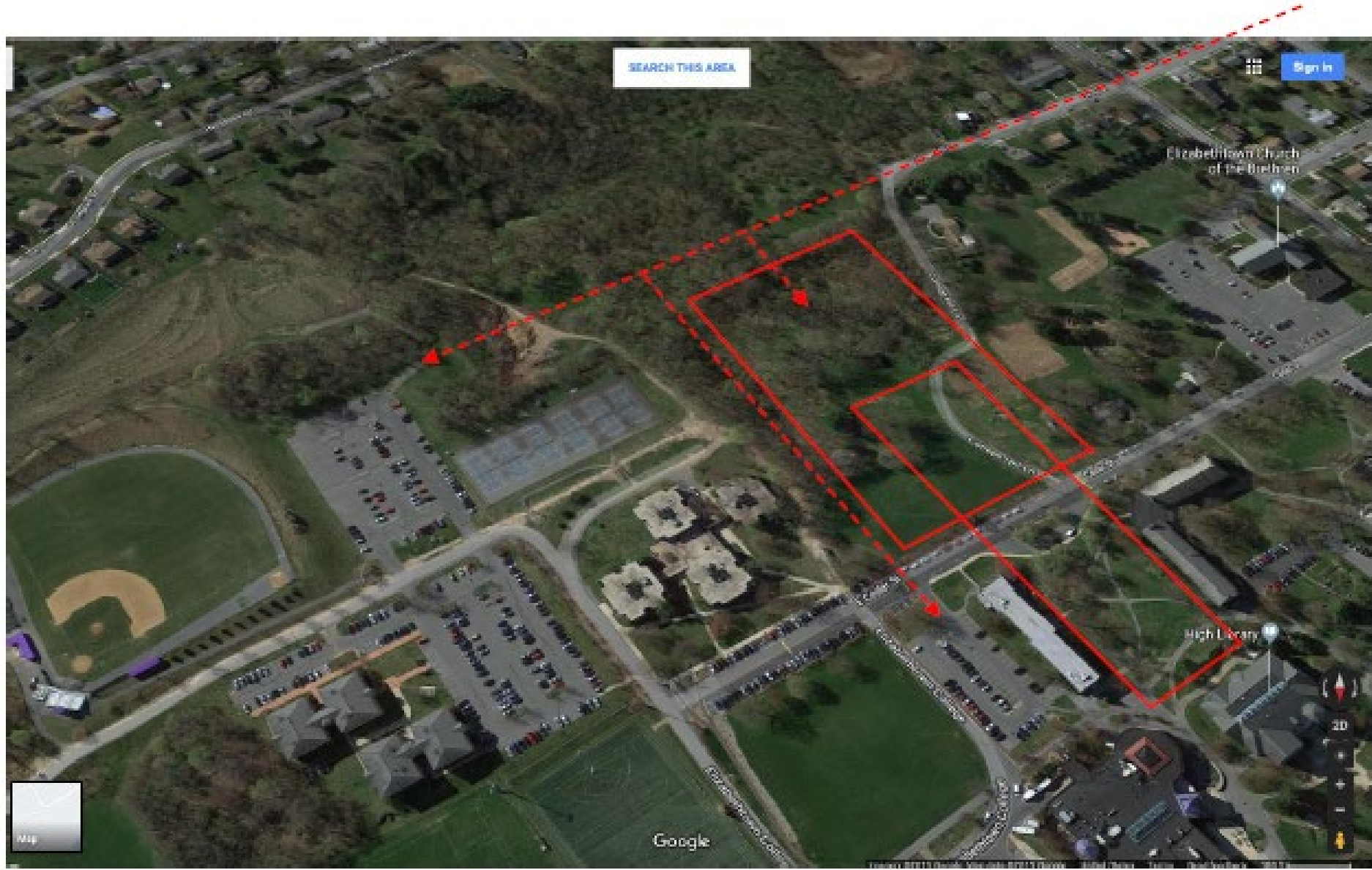
2019 Semester Project CEDAR HILL HOUSING



2019 Semester Project CEDAR HILL HOUSING



2019 Semester Project CEDAR HILL HOUSING

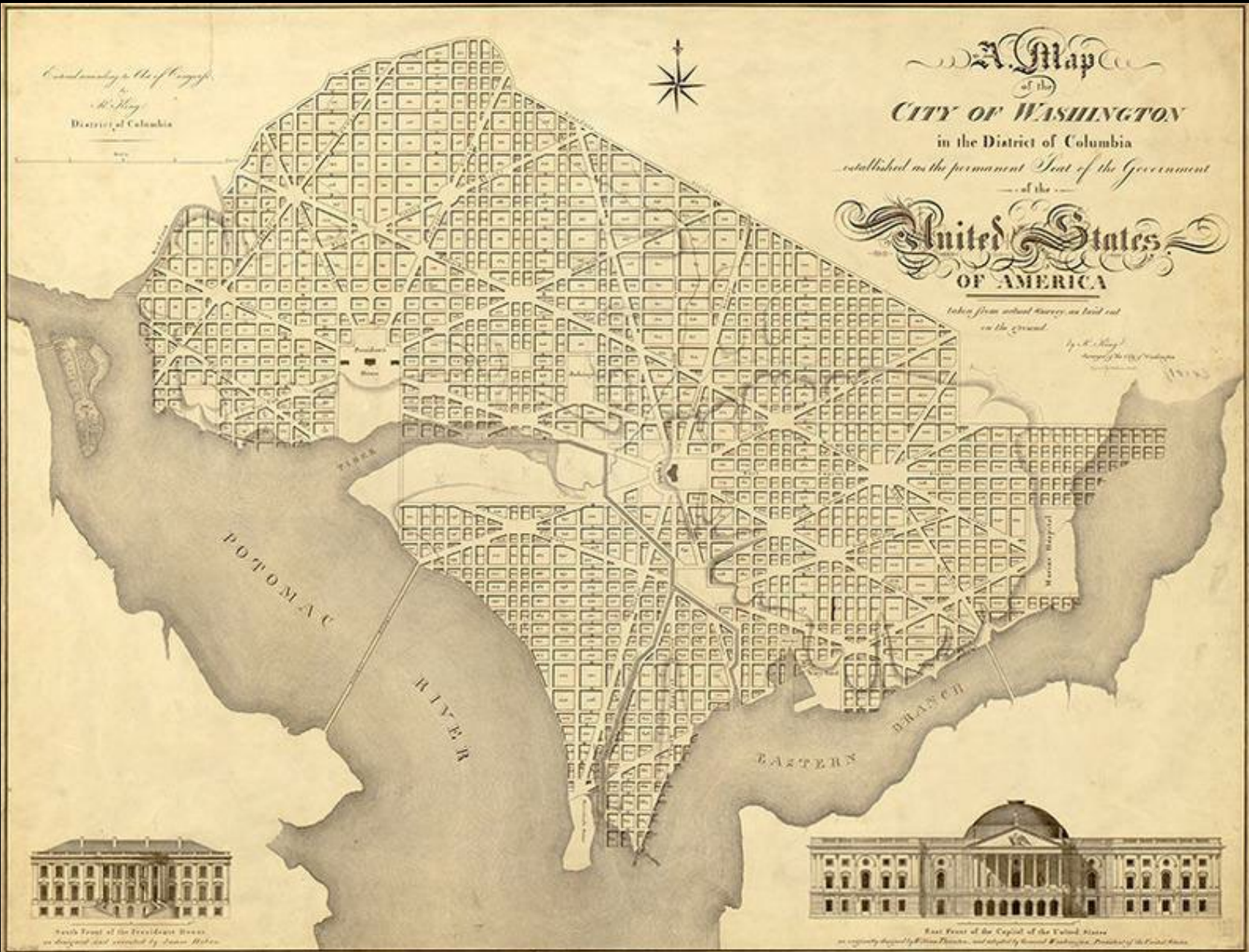


View driving East up Cedar Street with site on the right:









“...can organize forms that are generally equivalent in size, shape, and function into a coherent, non-hierarchical organization” [1]



JT Wunderlich 1984,85 Project Manager / Designer
West Lake Oaks (13 buildings), Austin TX

JT Wunderlich 1984,85 Project Manager / Designer

Austin TX

- ✘ Architecture and Engineering
- ✘ Interior Architecture
- ✘ Managed 60 contracts and several employees

URBAN DESIGN



Two IBM360 Computer Centers

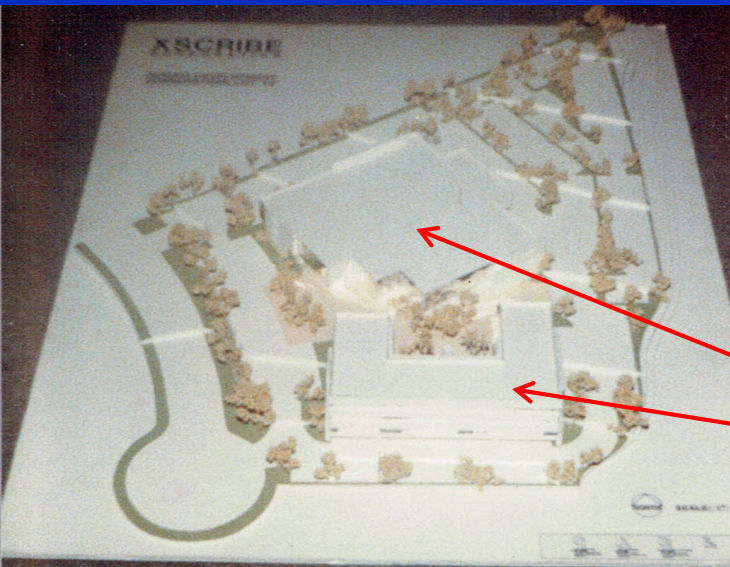
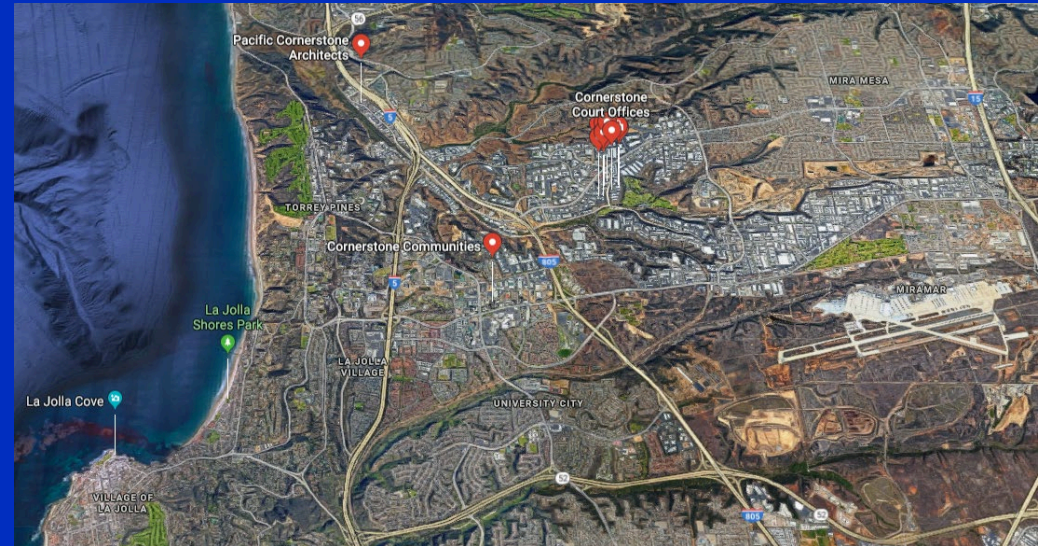
2018 Photo



CLUSTERED ORGANIZATION

URBAN DESIGN (and Architecture)

1986/87 J Wunderlich, Director of Projects
“Cornerstone” High-tech office complex
San Diego CA
JDC inc (Development Company)



66,000sf hi-tech office & manufacturing for “Xscribe” inc
44,00sf “spec” (speculative) office building

- Led Architectural Design Team
- Added significant Architectural Design
- Project nominated for annual San Diego “Orchid Award”

CLUSTERED ORGANIZATION

URBAN DESIGN (and Architecture)

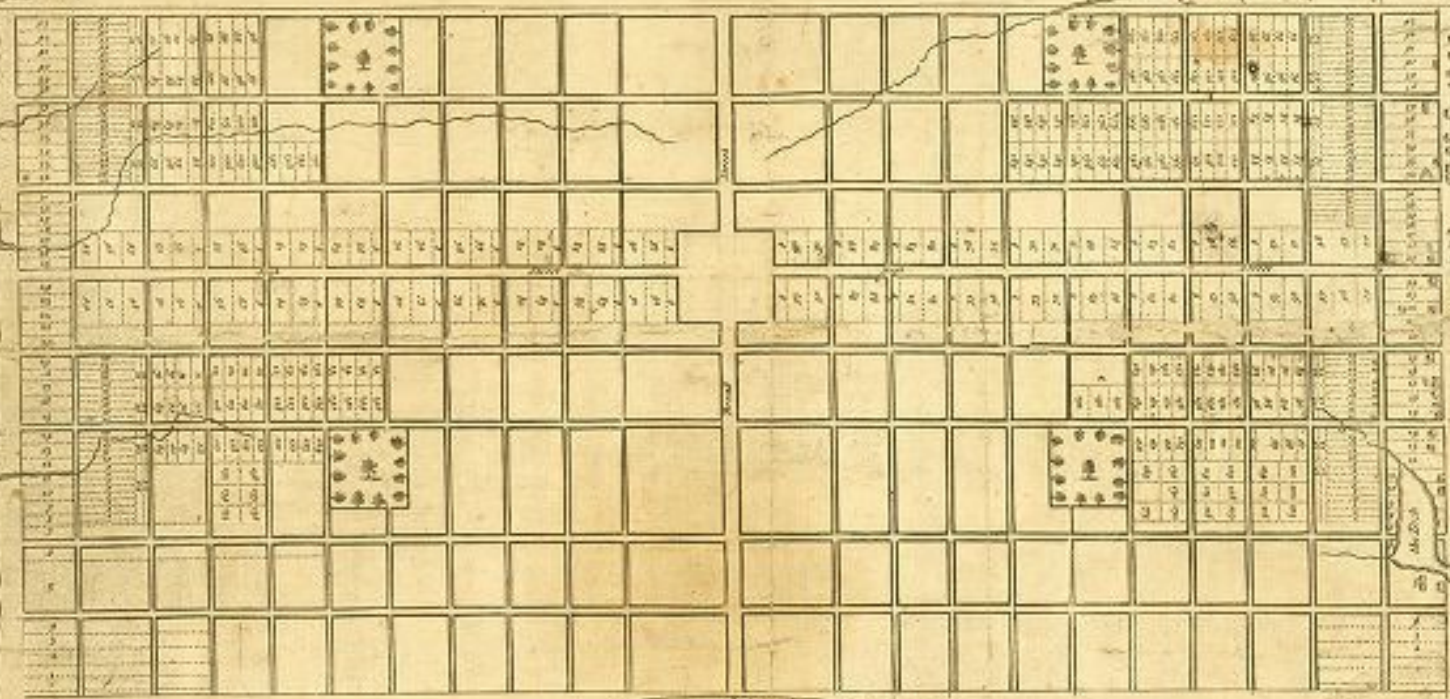


Thomas Holme was Surveyor General
in 1681 and was the author of this plan

A Plan of the City
of Philadelphia
in the Province of
PENNSYLVANIA
in America
By Thomas Holme Surveyor General
Sold by Andrew Seale in Broad-Street
London.



The above Standard



The above Standard
is that which was first set out by the Surveyor
and is now the only one of its kind in the City

“Entering an urban sector involves penetrating a vertical plane that distinguishes one space from another” [1]



ENTRANCE

URBAN DESIGN



おてつき運動綱領
「念佛をお願まし、
法皇さまのみ教え
をくらしの中に生
かしましょう」
「念佛の信心を人か
ら人におてつきし
同信の輪をひろげ
ましょう」
「浄土の信仰を高め、
人々の初台と社会
の浄化につとめま
しょう」

四脚門

浄土堂

これより先は
関係者以外
ご遠慮ください
Staff only

Kyoto 2013

ENTRANCE

URBAN DESIGN



Kyoto 2013

ENTRANCE

URBAN DESIGN



Kyoto 2013

ENTRANCE

URBAN DESIGN

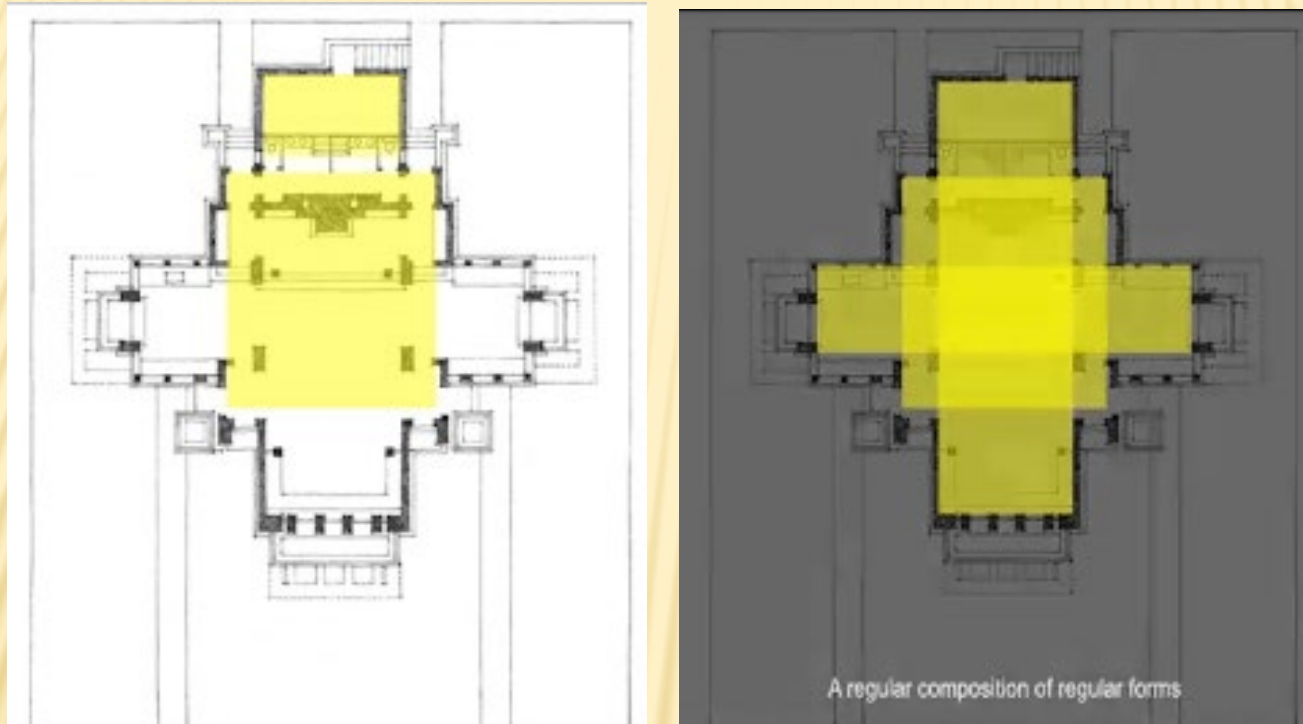


Kyoto 2013

ORGANIZATION of FORMS and SPACES

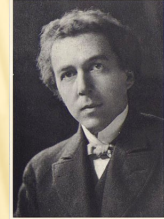
B) *in Architecture*

A regular COMPOSITION of regular FORMS”

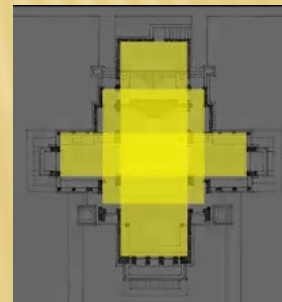
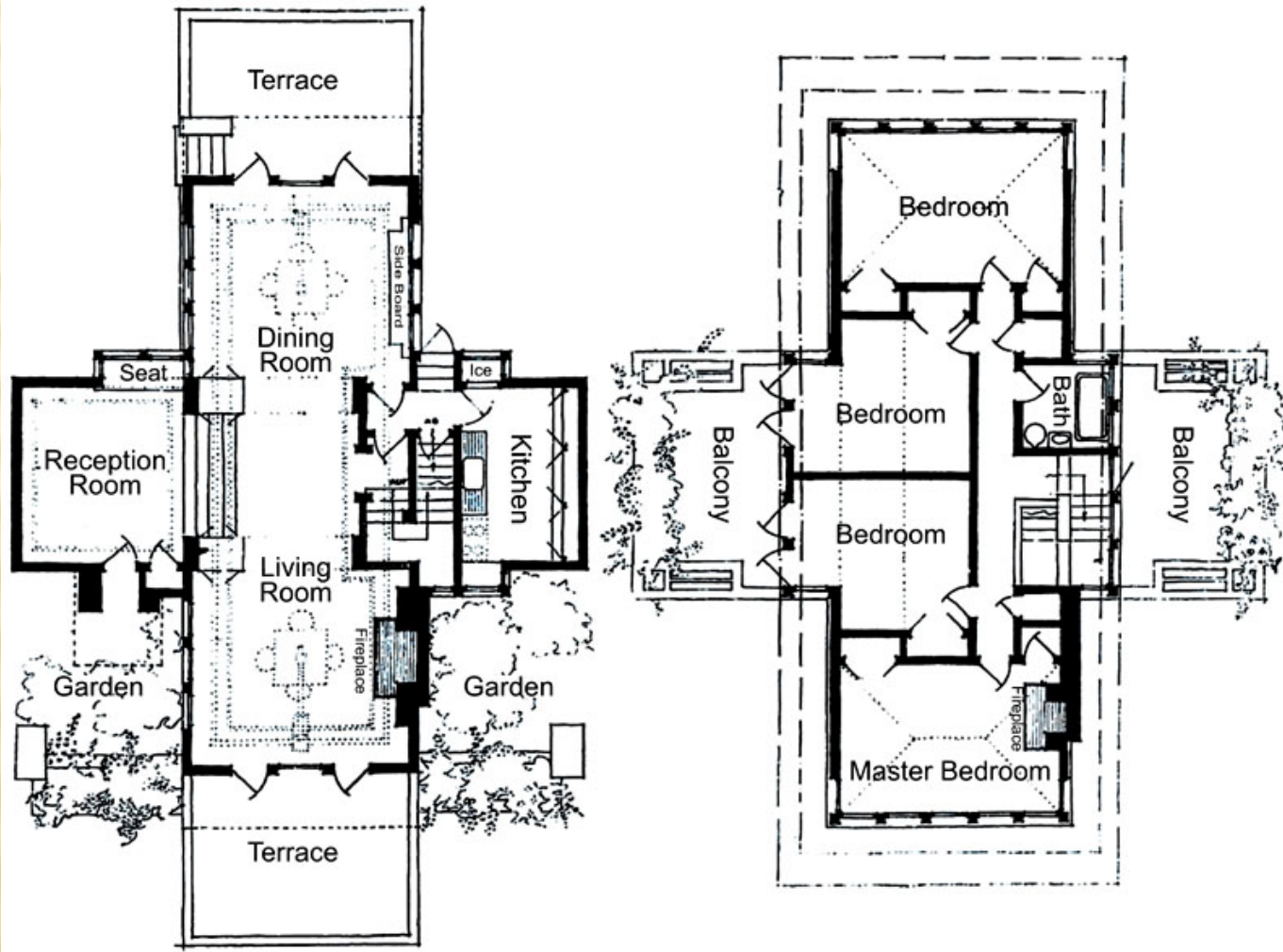


Coonley Playhouse, Riverside IL. 1912 by Frank Lloyd Wright”

“Pin-wheeled Planes CRUCIFORM” [3]



Frank Lloyd Wright
1867-1958

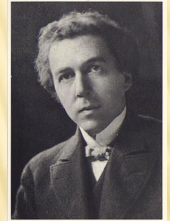


Prairie-style CRUCIFORM pinwheeled-plane type floor plan

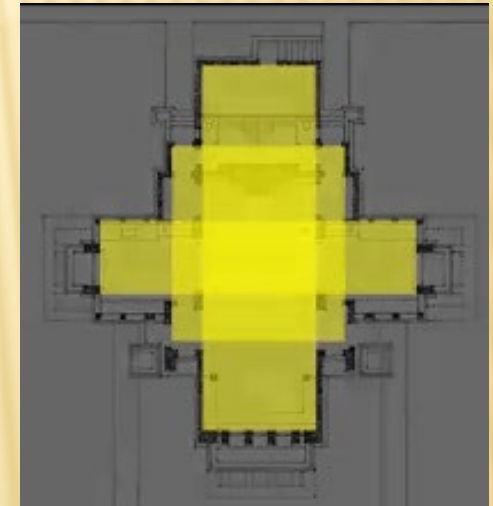
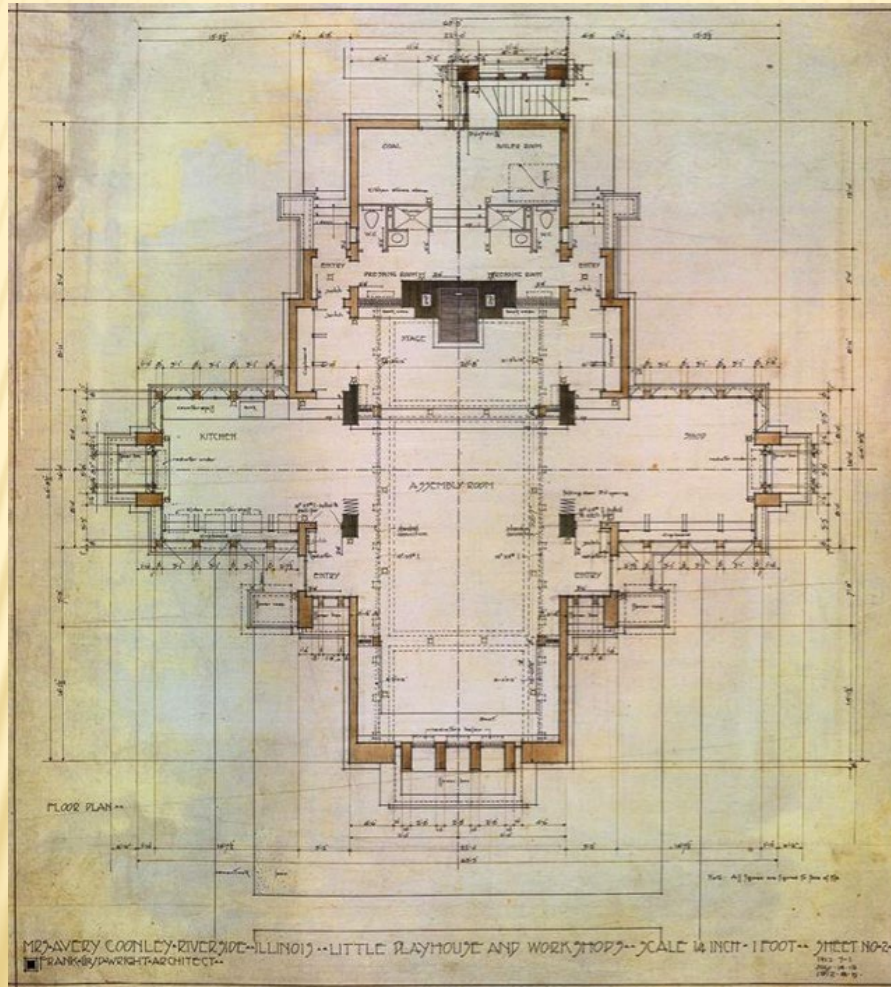
<http://www.steinerag.com/flw/Artifact%20Pages/PhRtS142.htm>

A regular COMPOSITION of regular FORMS

The CRUCIFORM, Pin-wheeled Planes of Frank Lloyd Wright



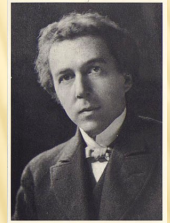
Frank Lloyd Wright
1867-1958



Coonley Playhouse, Riverside IL. 1912 by Frank Lloyd Wright

<https://www.pinterest.com/pin/412923859572244251/>

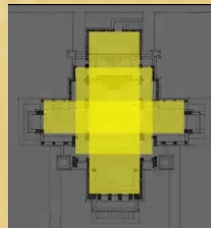
A regular COMPOSITION of regular FORMS



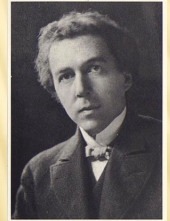
Frank Lloyd Wright
1867-1958

Coonley Playhouse, Riverside IL. 1912 by Frank Lloyd Wright

<https://www.secondshelters.com/2018/07/05/frank-lloyd-wrights-coonley-house-an-architect-a-woman-a-school-your-home/>



A regular COMPOSITION of regular FORMS



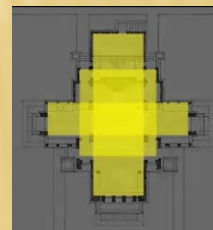
Frank Lloyd Wright
1867-1958



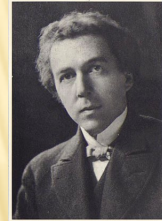
VIT STUDIO

Coonley Playhouse, Riverside IL. 1912 by Frank Lloyd Wright

<https://www.secondshelters.com/2018/07/05/frank-lloyd-wrights-coonley-house-an-architect-a-woman-a-school-your-home/>



A regular COMPOSITION of regular FORMS



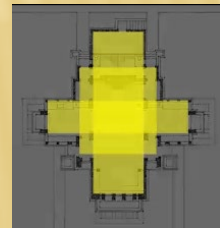
Frank Lloyd Wright
1867-1958

©VHT STUDIOS

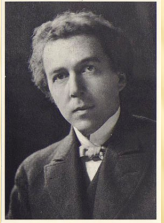


Coonley Playhouse, Riverside IL. 1912 by Frank Lloyd Wright

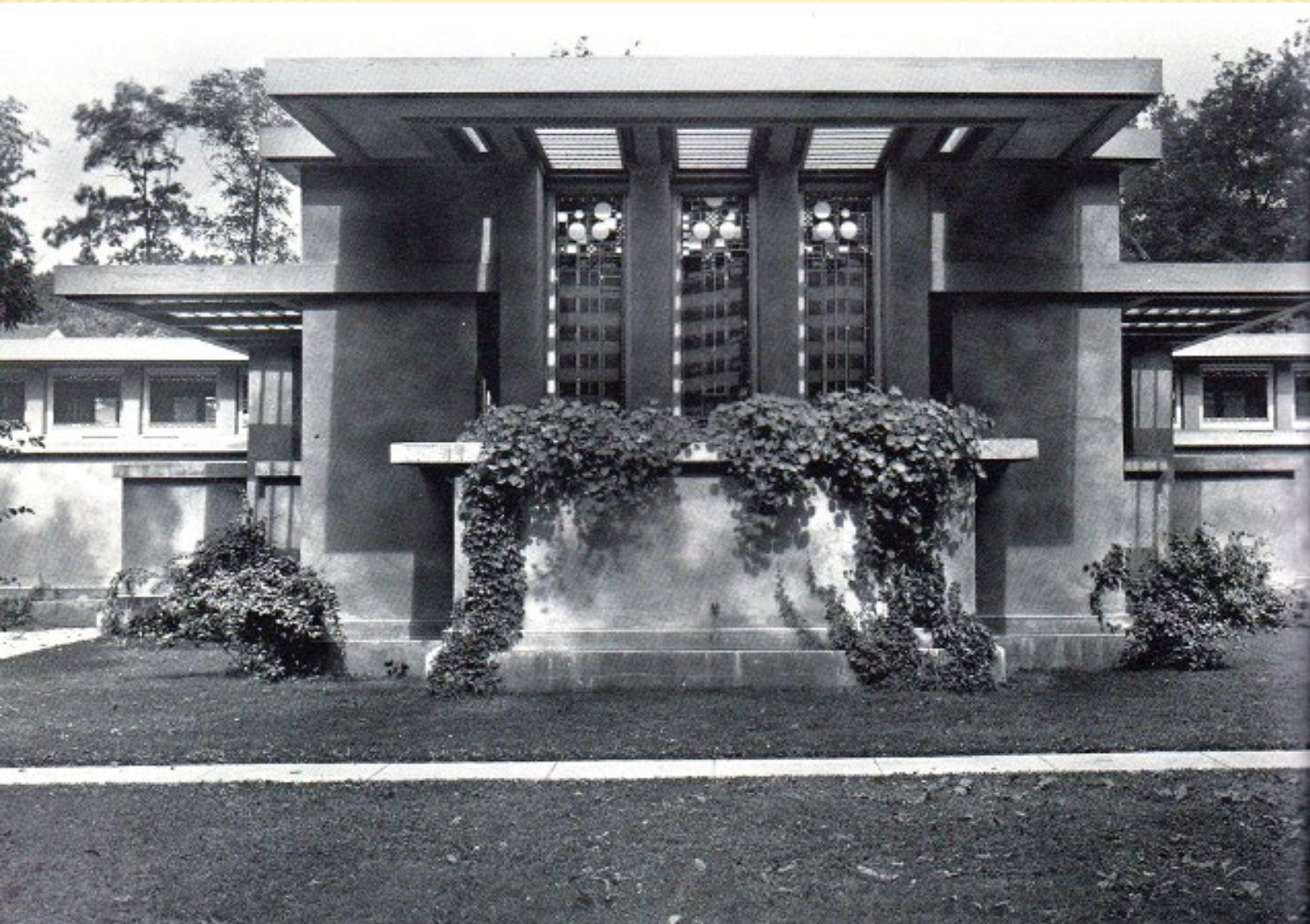
<https://www.secondshelters.com/2018/07/05/frank-lloyd-wrights-coonley-house-an-architect-a-woman-a-school-your-home/>



A regular COMPOSITION of regular FORMS

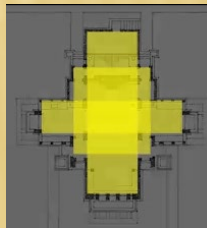


Frank Lloyd Wright
1867-1958

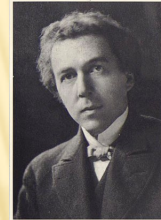


Coonley Playhouse, Riverside IL. 1912 by Frank Lloyd Wright

<https://www.secondshelters.com/2018/07/05/frank-lloyd-wrights-coonley-house-an-architect-a-woman-a-school-your-home/>



A regular COMPOSITION of regular FORMS

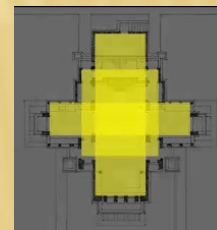


Frank Lloyd Wright
1867-1958

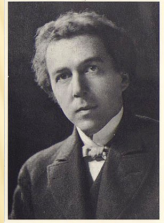


Coonley Playhouse, Riverside IL. 1912 by Frank Lloyd Wright

<https://www.secondshelters.com/2018/07/05/frank-lloyd-wrights-coonley-house-an-architect-a-woman-a-school-your-home/>



A regular COMPOSITION of regular FORMS



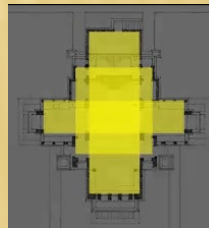
Frank Lloyd Wright
1867-1958

© VHT STUDIOS

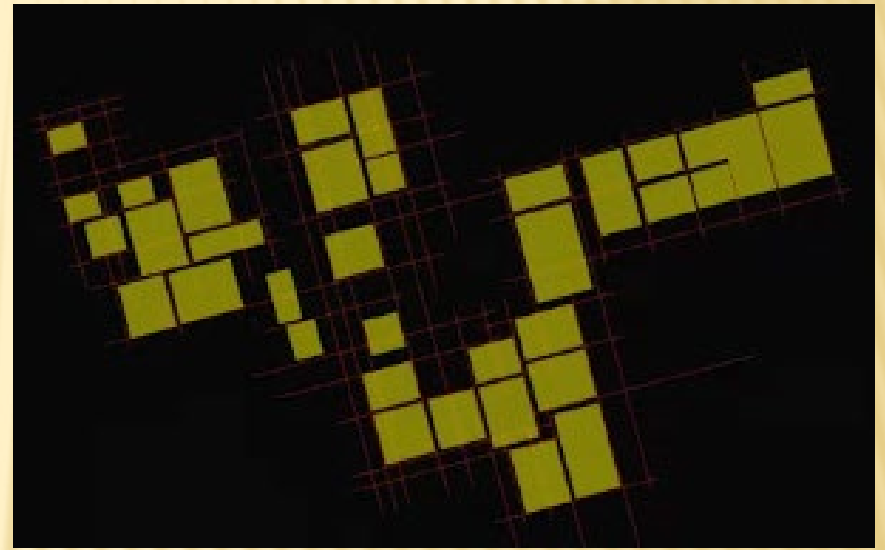
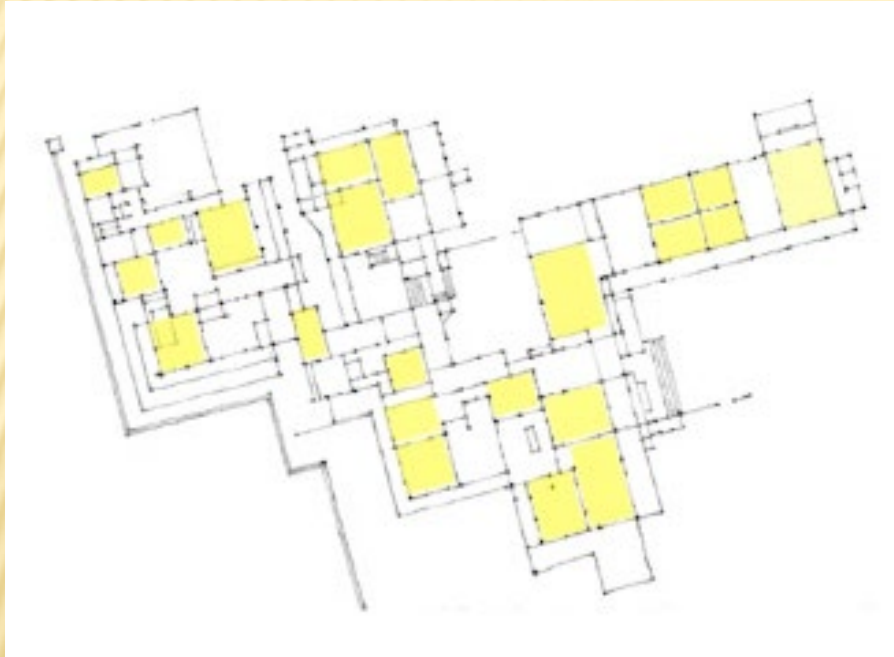


Coonley Playhouse, Riverside IL. 1912 by Frank Lloyd Wright

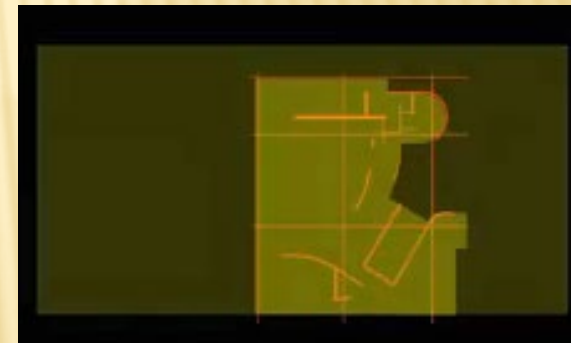
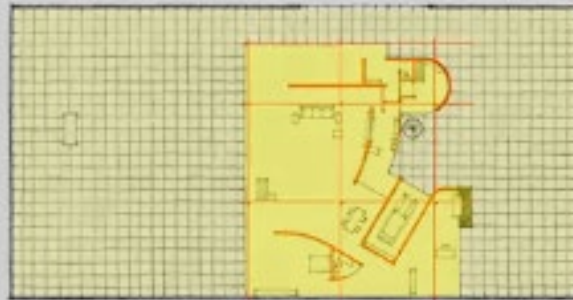
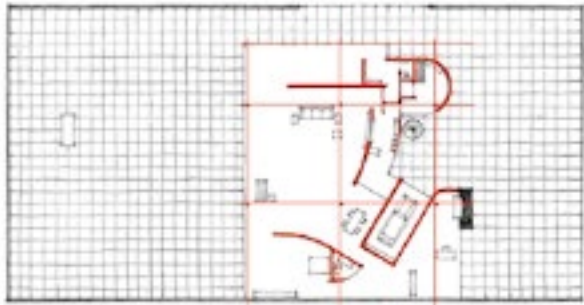
<https://www.secondshelters.com/2018/07/05/frank-lloyd-wrights-coonley-house-an-architect-a-woman-a-school-your-home/>



“A regular COMPOSITION of regular FORMS” [1]



“A regular *FIELD* with irregular *FORMS* within” [1]



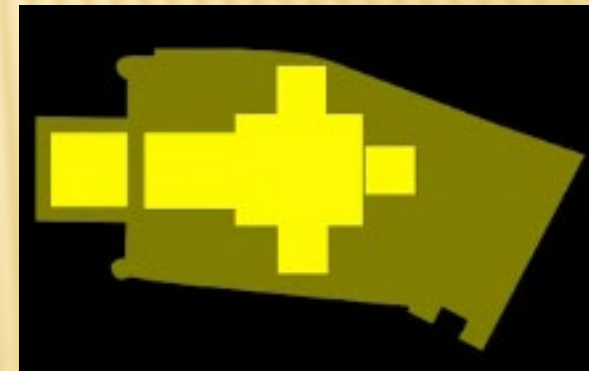
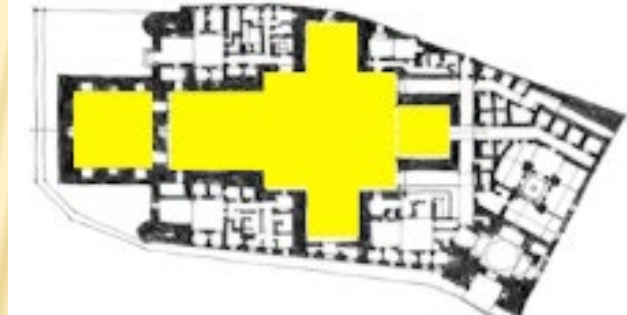
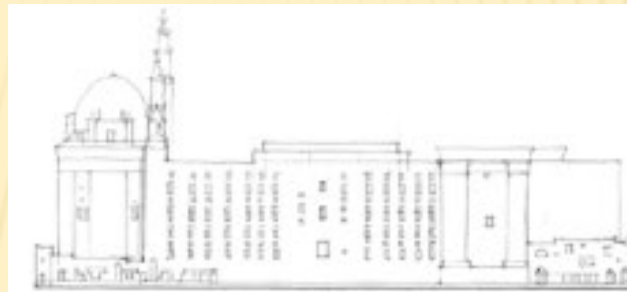


*“an irregular COMPOSITION
of irregular FORMS” [1]*



An irregular composition of irregular forms

“An irregular COMPOSITION with regular FORMS within” [1]



Adjacency allows each space to be clearly defined and respond to specific functional or symbolic requirements

...The degree of visual and spatial continuity between adjacent spaces depends on the nature of the plane that both separates and binds them
[1]

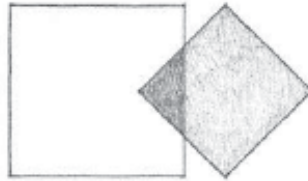
Space within a Space

A space may be contained within the volume of a larger space.



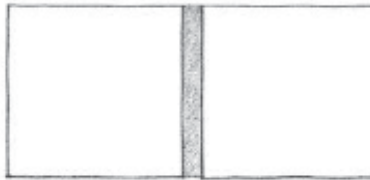
Interlocking Spaces

The field of a space may overlap the volume of another space.



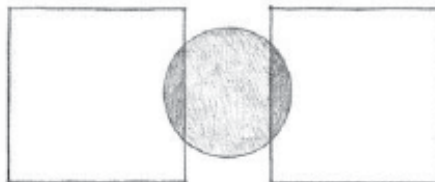
Adjacent Spaces

Two spaces may abut each other or share a common border.



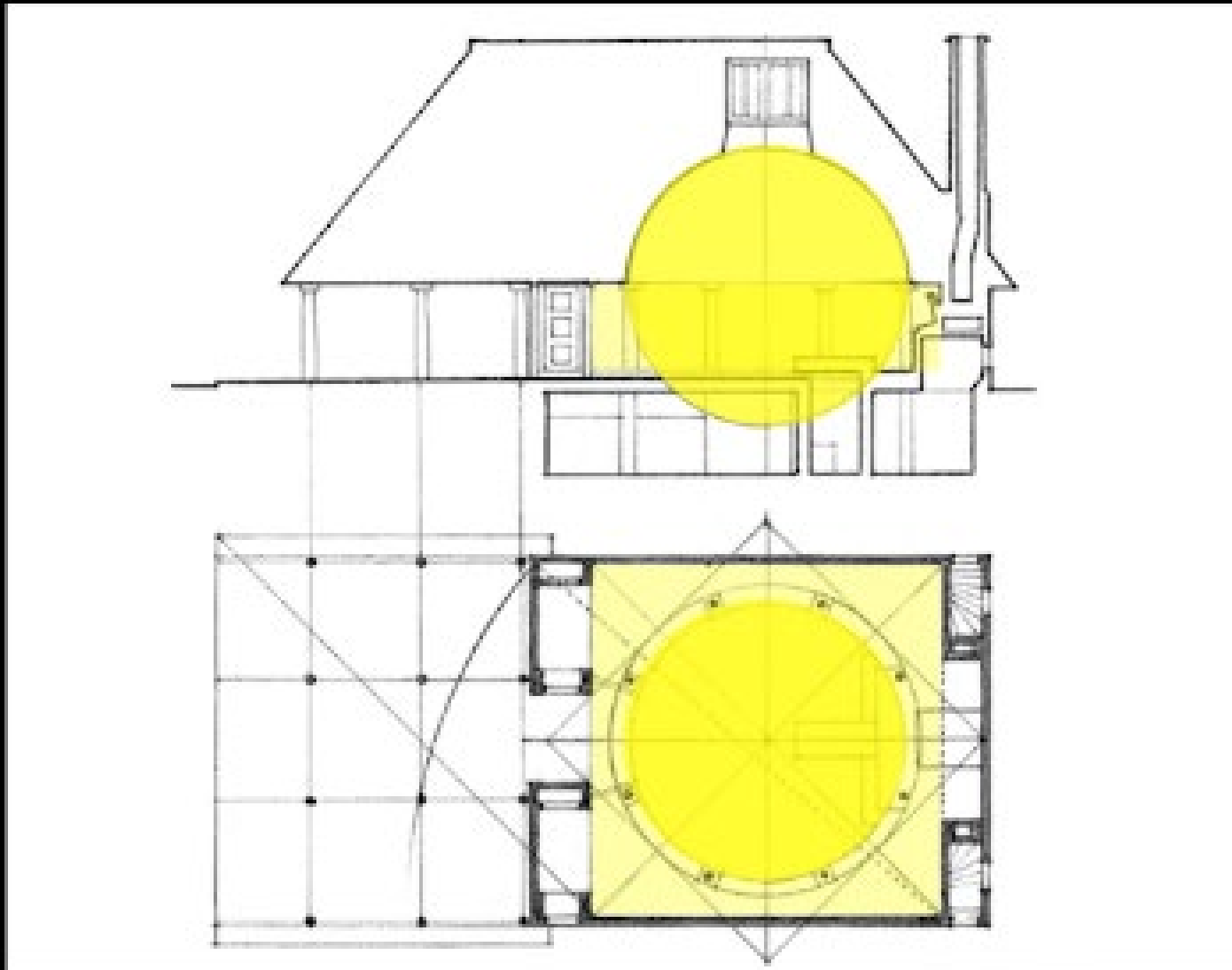
Spaces Linked by a Common Space

Two spaces may rely on an intermediary space for their relationship.

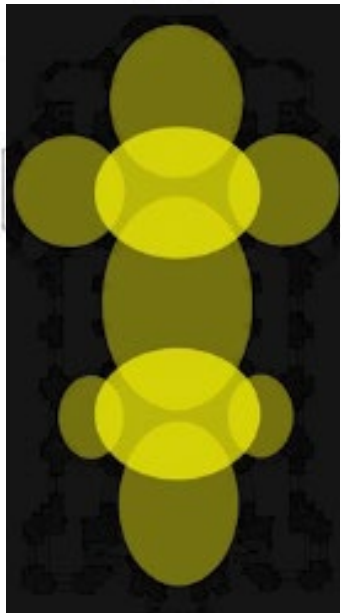
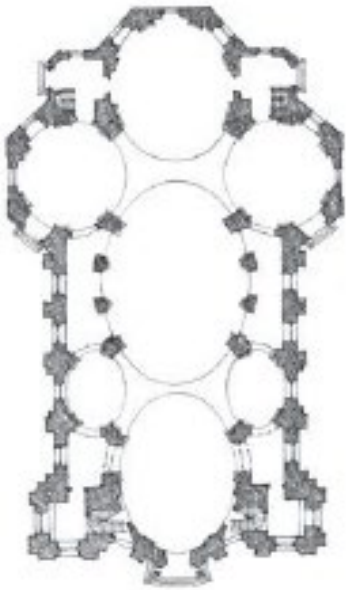


“Spaces related to one another by function, proximity, or a path of movement” [1]

A large space can envelop a smaller space that depends on the larger, enveloping space for its relationship to the exterior environment [1]

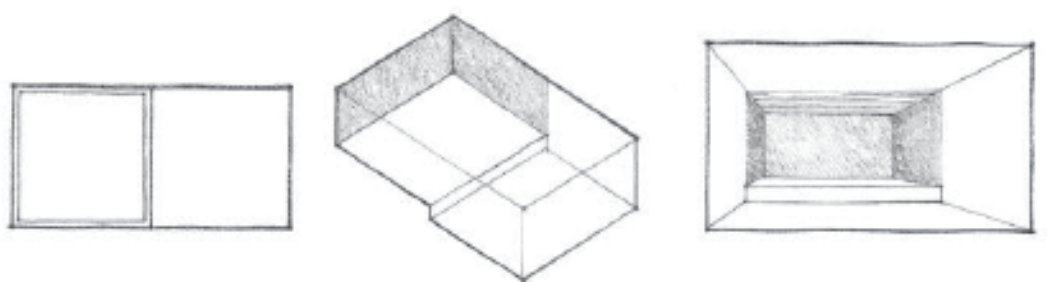
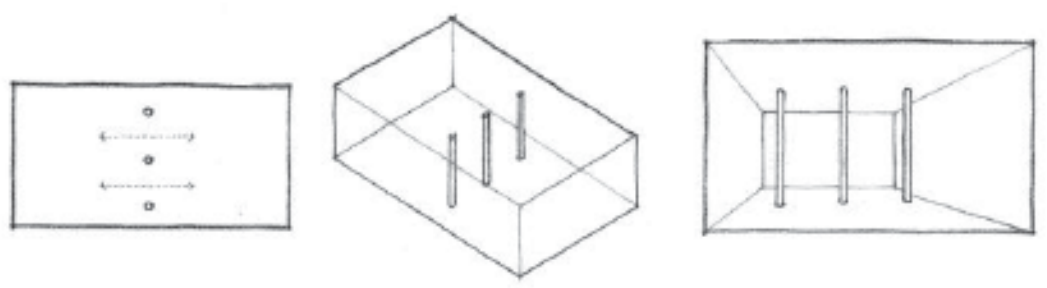
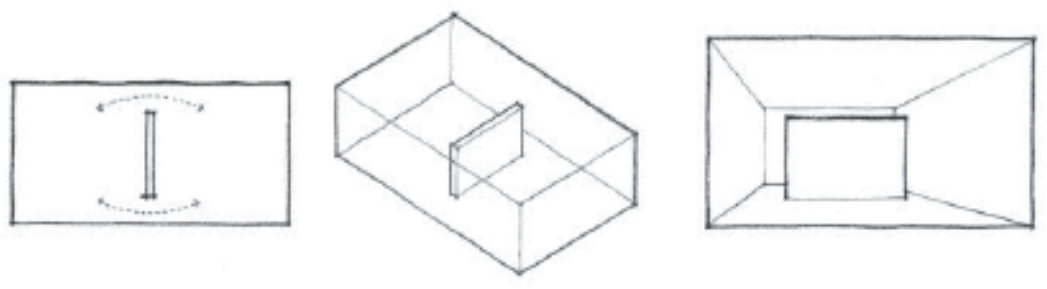
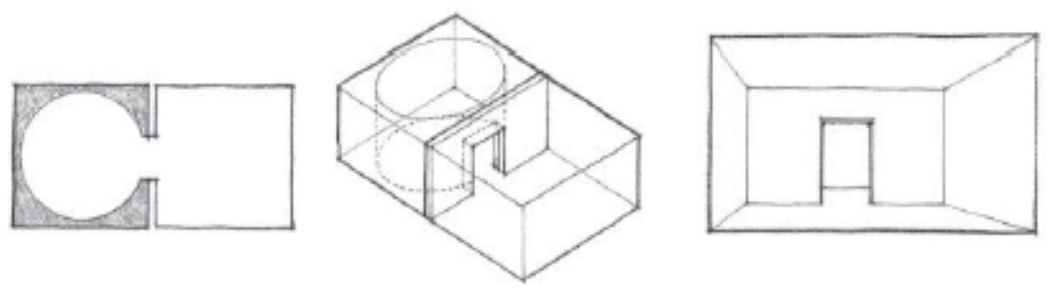


An interlocking spatial relationship results from overlapping two spatial fields and the emergence of a zone of shared space [1]



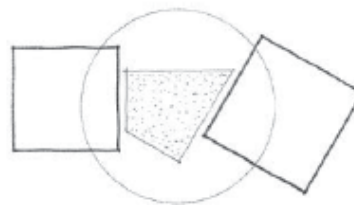
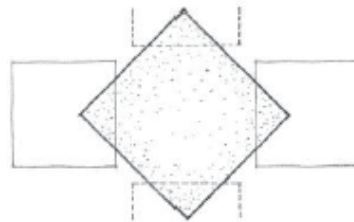
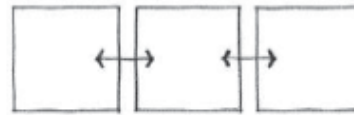
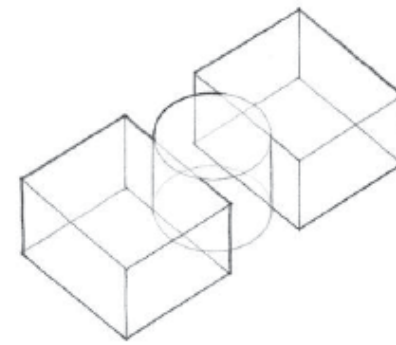
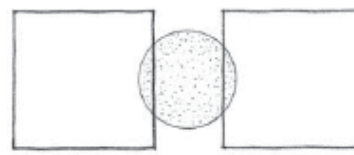
<https://www.archinform.net/projekte/562.htm>

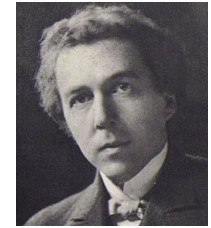
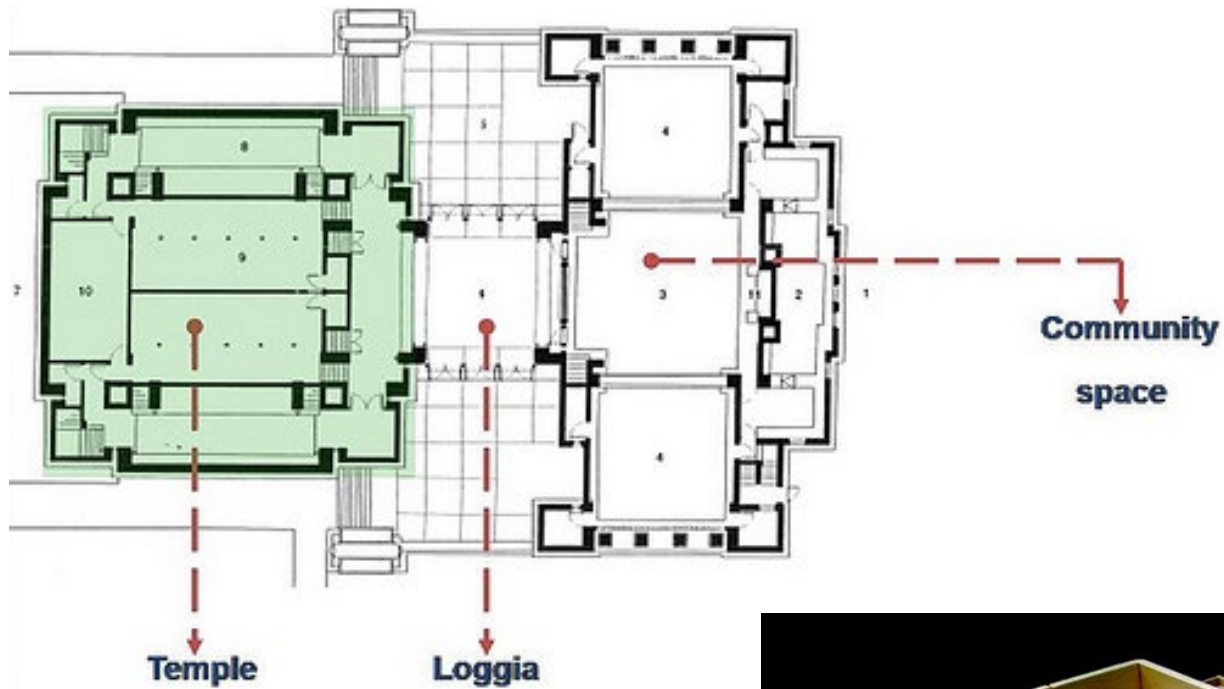
Pilgrimage Church, Vierzehnheiligen,
Germany, 1744–1772, Balthasar Neumann



SPACES LINKED BY A COMMON SPACE

ARCHITECTURE





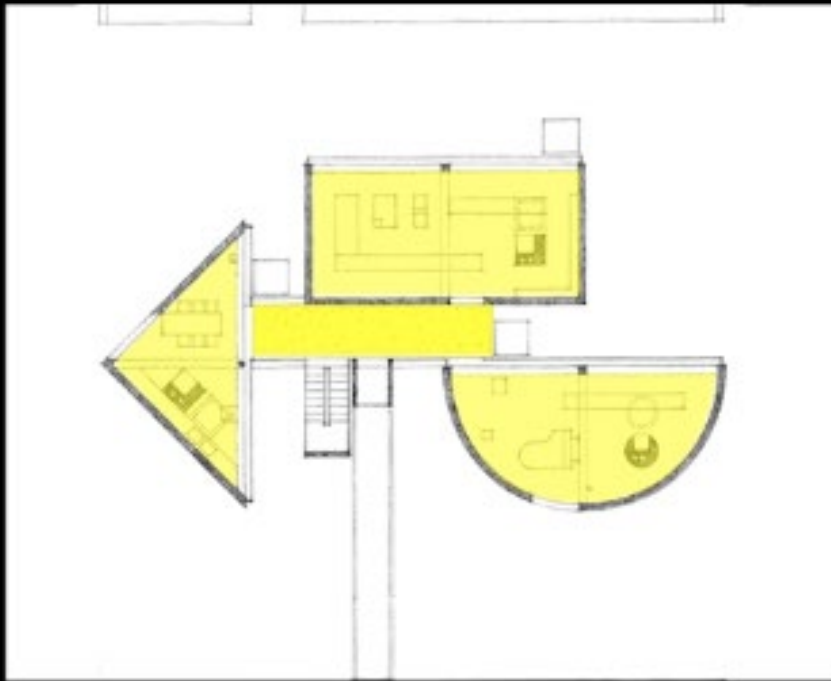
Frank Lloyd Wright
1867-1958

Unity Temple in Oak Park,
1905 Frank Lloyd Wright

<http://lloydandalex.blogspot.com/2014/10/usa-31-frank-lloyd-wright-unity-temple.html>



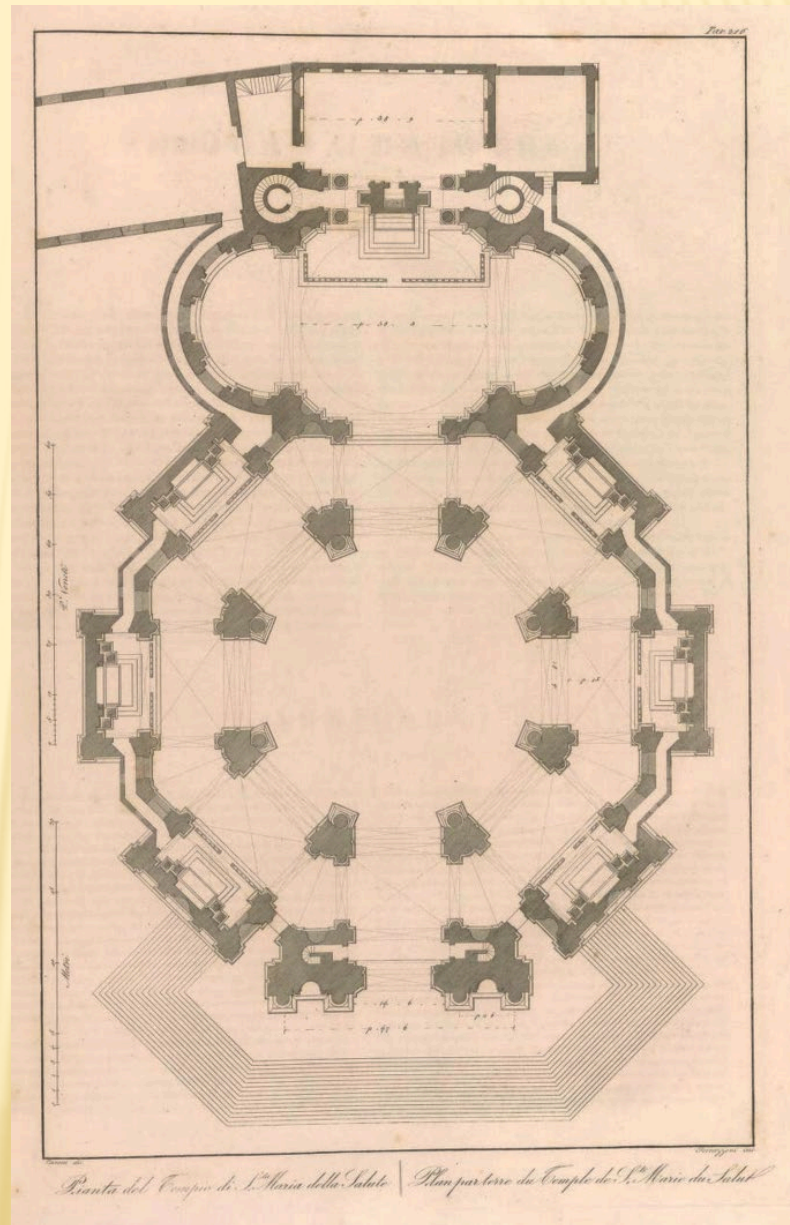
Intermediate space can link spaces distant from each other [1]



CENTRALIZED FORM

Centralized forms are ideal for freestanding structures, dominating a point in space, or occupying the center of a defined field.

They can embody secret or honorific places, or commemorate significant persons or events [1]



St. Maria Della Salute, Venice, Italy, 1631-1682

<https://library.bc.edu/venetianart/items/show/1768>

Venice, 2008,2011,2014,2017

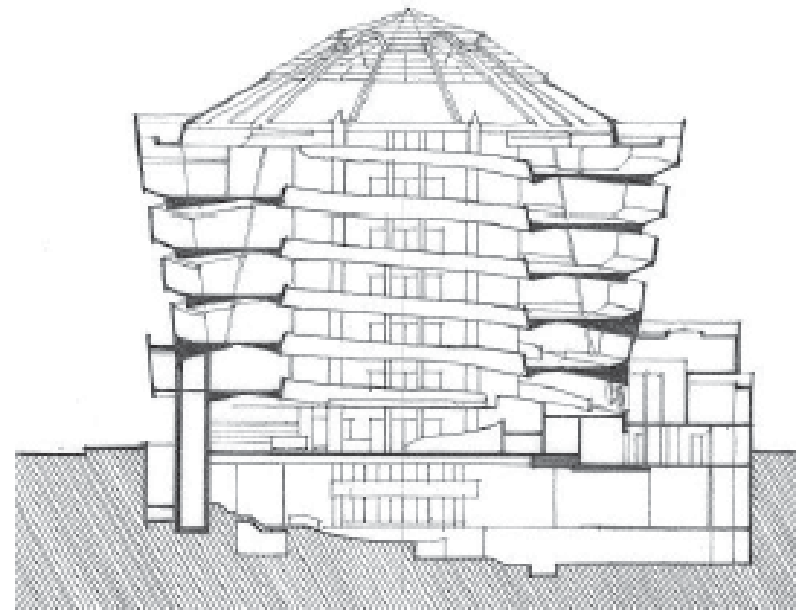


St. Maria Della Salute, Venice, Italy, 1631-1682

CENTRALIZED FORM *and* ORGANIZATION

A centralized organization has secondary spaces grouped around a dominant, central space

... The central organizing space may be an interior or exterior space [1]

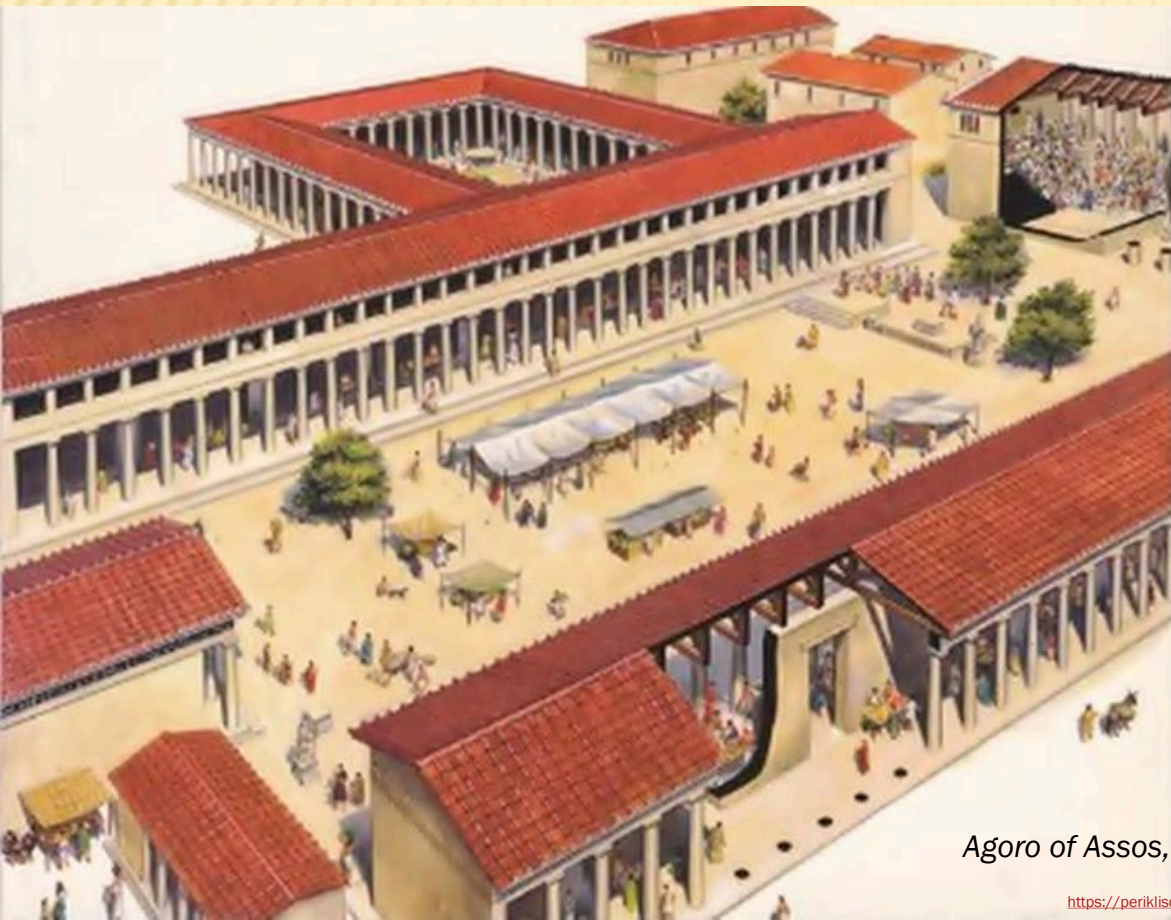


Guggenheim Museum, New York City,
1959 Frank Lloyd Wright



LINEAR FORM *and* ORGANIZATION

A linear form can organize secondary forms, and expresses a perception of movement [1]



Agora of Assos, Asia Minor, 2nd century BC

LINEAR FORM *and* ORGANIZATION

“perception of movement” [1] 



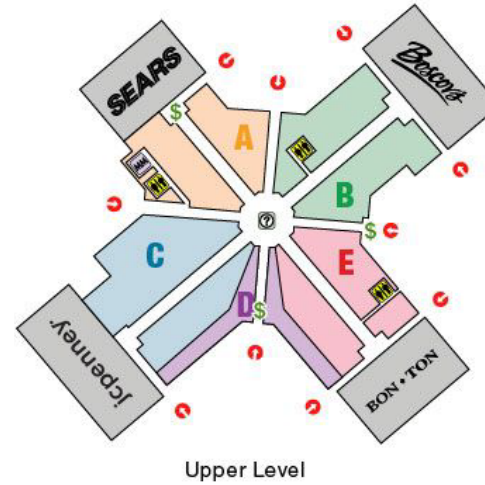
Trajan's Market, Rome, 110 AD

RADIAL FORM and ORGANIZATION

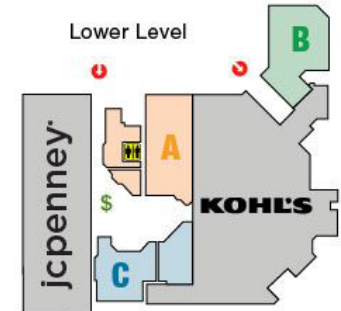
Radial forms have a *central core* that is either a symbolic or functional center of organization [1]



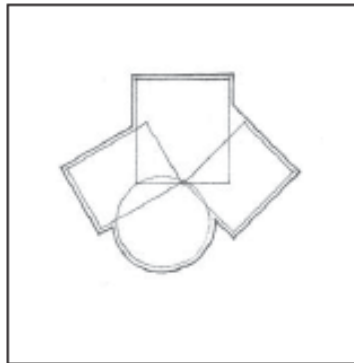
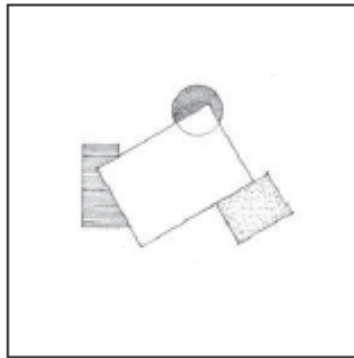
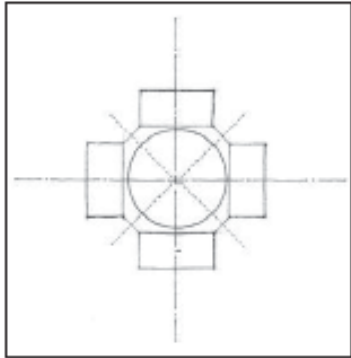
Park City Mall, Lancaster PA



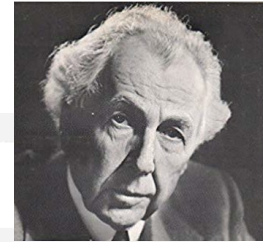
- LEGEND
- Mail Entrance
 - ATM
 - Public Restroom
 - Customer Service
 - Mail Office



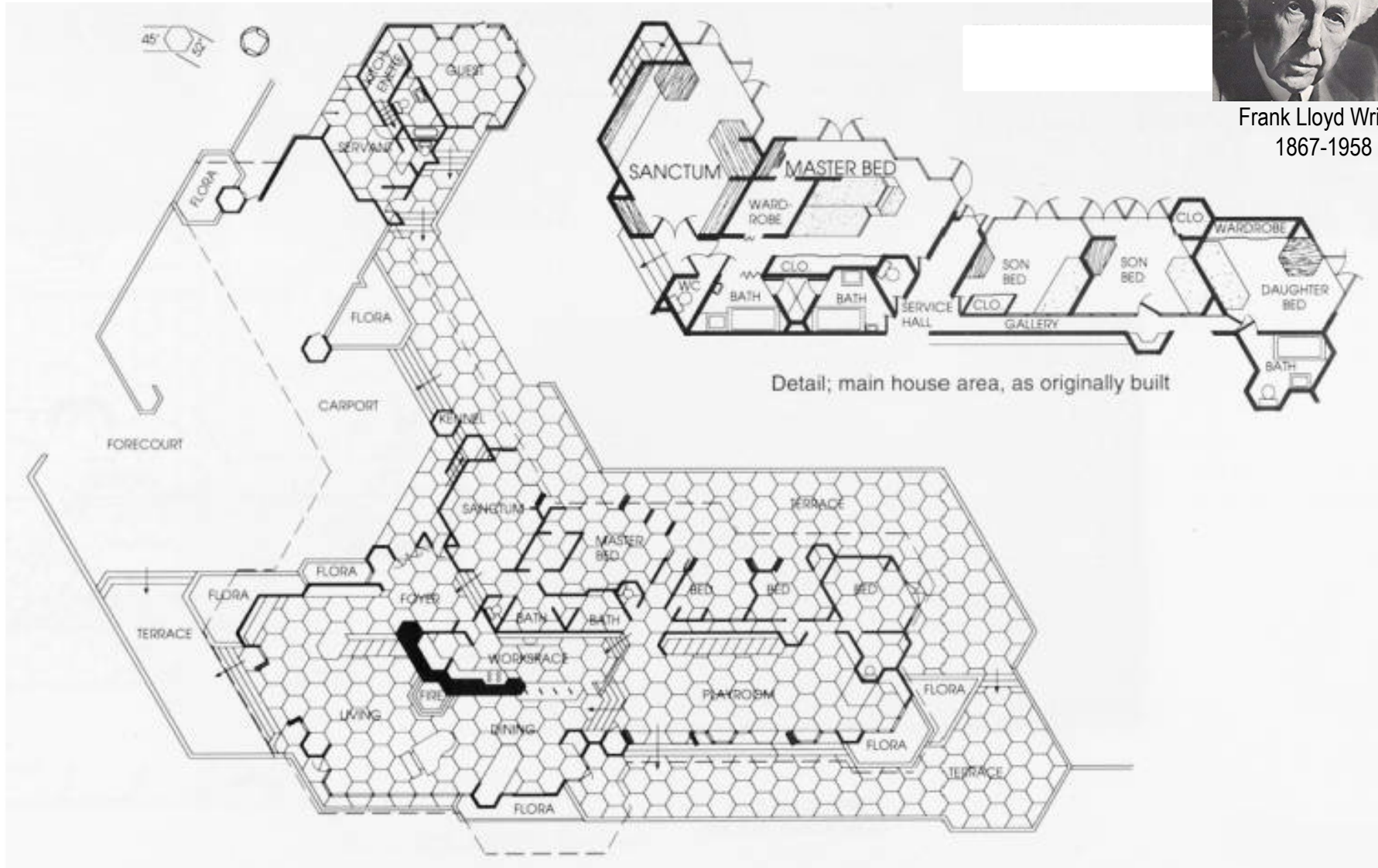
CLUSTERED FORM



CLUSTERED FORM



Frank Lloyd Wright
1867-1958



Hanna-Honeycomb House, Stanford California, 1937 Frank Lloyd Wright

CLUSTERED FORM *and* ORGANIZATION



Habitat Montreal, 1967 Moshe Safdie

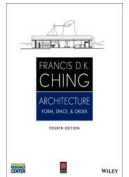
https://www.reddit.com/r/interestingasfuck/comments/94qv3u/habitat_67_a_housing_complex_in_montreal/

CLUSTERED FORM *and* ORGANIZATION

A clustered organization relies on physical proximity to relate spaces

... and often has repetitive, cellular spaces with similar functions, and/or share a common shape or orientation.

... A clustered organization can also accept spaces that are dissimilar in size, form, and function, but relate by proximity or an ordering device such as symmetry or an axis.” [1]



*“The Anasazi
civilization,
1500 BC,
Chaco Canyon,
New Mexico”*

<http://www.ancientpages.com/2016/12/03/anasazi-sophisticated-civilization-disappeared-evolved-american-indians-southwest/>

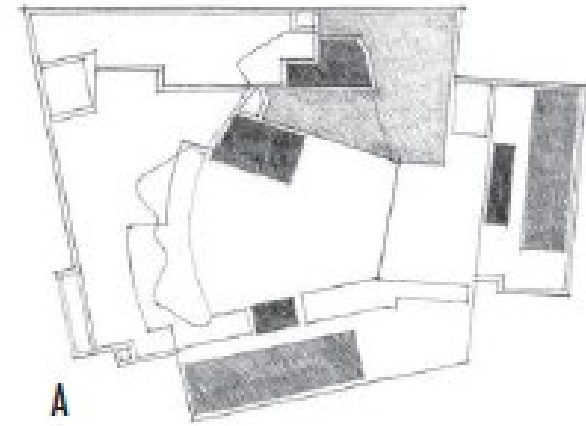


GRID FORM *and* ORGANIZATION

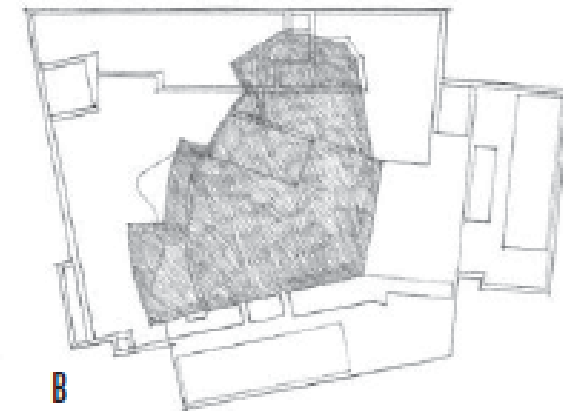
The *grid pattern* has repetitive modular units of space, with each as an isolated “event” or as repetitions [1]



- A. Some spaces, such as offices, have specific but similar functions and can be grouped into single, linear, or clustered forms.
- B. Some spaces, such as concert halls, have specific functional and technical requirements, and require specific forms that will affect the forms of the spaces around them.
- C. Some spaces, such as lobbies, are flexible in nature and can therefore be freely defined by the spaces or grouping of spaces around them.



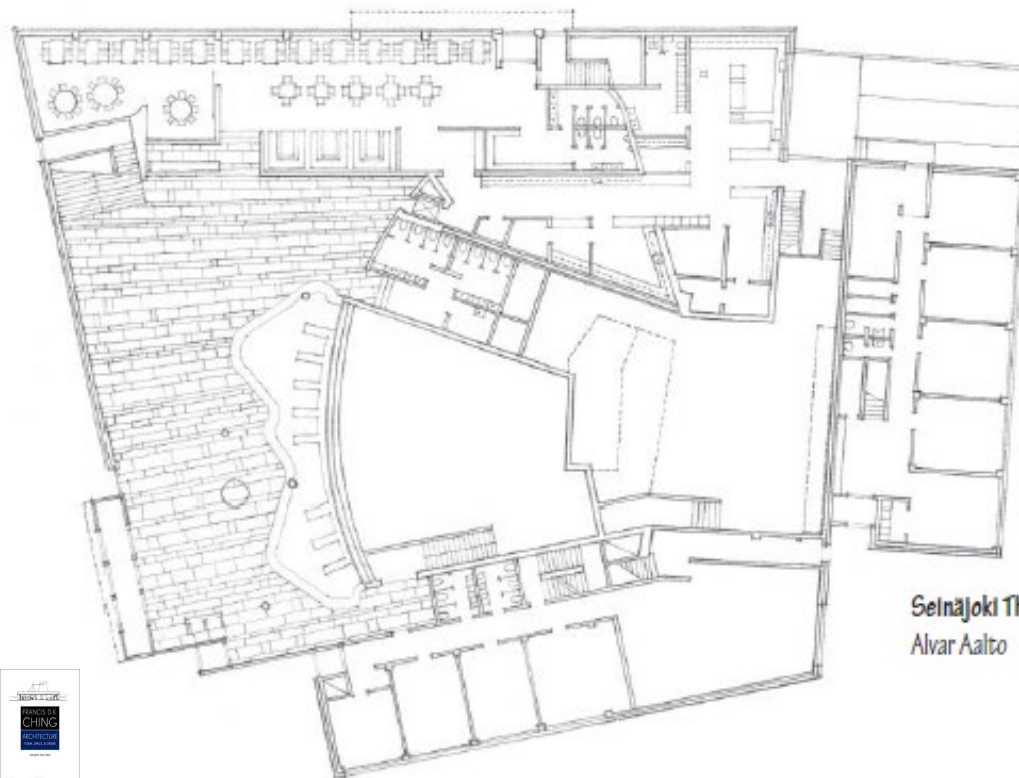
A



B



C

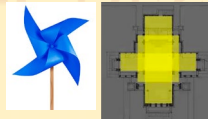


Seinäjoki Theater, Finland, 1968–1969,
Alvar Aalto

ORGANIC ARCHITECTURE DESIGN PRINCIPLES

CONFORM TO SITE, sun, topography, environment

PINWHEELED PLANES -- CRUCIFORM



- PRAIRIE-SCHOOL, BROAD CENTRAL CHIMNEY, LONG CANTILEVERS (overhangs & balconies)

FOLDED PLANE like origami ...continuity...walls, ceilings, and floors become one

SIMPLE GEOMETRIES

HUMAN SCALE

OPEN FLOOR PLAN

- ✗ DESTROY BOX, no Victorian box-type rooms, - FLOW between rooms, and inside/outside
- ✗ Walls become screens, BANDS of WINDOWS, FRAME VIEWS - like ENGAWA
- ✗ Use MATERIALS IN NATURAL STATE -- same on exterior and interior

FROEBEL
BLOCKS



UNITARIAN
MOTHER
Teacher



Japanese Buddhism & Shintoism,
with some roots in Chinese Philosophy

FORM and FUNCTION are one! Harmony, *not one following other, secondarily*

A UNIFIED WHOLE - inside and out - ORCHESTRATE SUN

BRING NATURE OUT OF MATERIALS, but Innovate (Textile Blocks, Modular "Ken" Design, etc.)

STRUCTURAL ART like in Nature (e.g., the veins in Leaves) - Interior space made exterior as architecture

SOFT WARM OPTIMISTIC COLOR TONES of earth, and autumn leaves

ASSIMILATE FIXTURES into structure, BUILT-IN FURNITURE many plants & planters

ARCHITECTURE = MUSIC



© JT Wunderlich PhD

Arts & Crafts, Italy, JAPAN



MUSICIAN
Preacher
FATHER



ARCHITECT
MENTOR Louis
Sullivan



Key Japanese words
by Mahua Bhattacharya,
Professor of Japanese,
for J Wunderlich's students

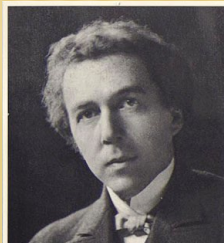
OMOIYARI - Considerate
ON - Duty
AMAE - Empathy
WA - Group Harmony
UCHI - Inner (or insider)
KENSON - Modesty
GIRI - Moral Obligation
SOTO - Outside (or outsider)
GARMAN - Persistence
ENRYO - Restraint
HAJI - Shame



NOTE: COMPRESSION & RELEASE is not Organic Design, but commonly used by FLW to cramp/hide entries so as to magnify destination Architecture

See more on **ORGANIC ARCHITECTURE DESIGN PRINCIPLES:**

Wunderlich Lecture Series on *“The Life and Work of Frank Lloyd Wright”* ©



Frank Lloyd Wright
1867-1958

ARCHITECTURE DESIGN THEORY



LECTURE SERIES

- ❑ PART 1 PRIMARY ELEMENTS
- ❑ PART 2 FORM
- ❑ PART 3 FORM & SPACE
- ❑ **PART 4 ORGANIZATION** *(This Lecture)*
- ❑ PART 5 CIRCULATION
- ❑ PART 6 PROPORTION & SCALE
- ❑ PART 7 PRINCIPLES

[PPTX](#) [MP4](#) [YouTube](#) [PDF](#)

[PPTX](#) [MP4](#) [YouTube](#) [PDF](#)

[PPTX](#) [MP4](#) [YouTube](#) [PDF](#)

[PPTX](#) [MP4](#) [YouTube](#) [PDF](#)

[PPTX](#) [MP4](#) [YouTube](#) [PDF](#)

[PPTX](#) [MP4](#) [YouTube](#) [PDF](#)

[PPTX](#) [MP4](#) [YouTube](#) [PDF](#)