

## 2018 ART/EGR499A&B Architecture Studio I & II Projects

### 20-year projected Housing for Elizabethtown College

#### MEYER HALL CONFERENCE CENTER

Use remaining infrastructure in kitchen area from when building included Meyer dining hall; Also add a new Honor's student center (with conference rooms and a design studio) on northwest corner of first floor. Add an art gallery and a stage for plays and live music. Include LEED criteria.

**Team:** Initial Building Analysis including many photo's of existing building conditions; especially those that need the most attention. Discuss improved connectivity between existing spaces.

**Brendan:** Revit drawings (Including natural and man-made lighting)

**Tommy & Ean:** Analyze architecture of comparable development at other colleges, and help with drawings.

**Team:** Create a "prospectus" to give to potential investors or donors.

#### GRADUATE STUDENT HOUSING

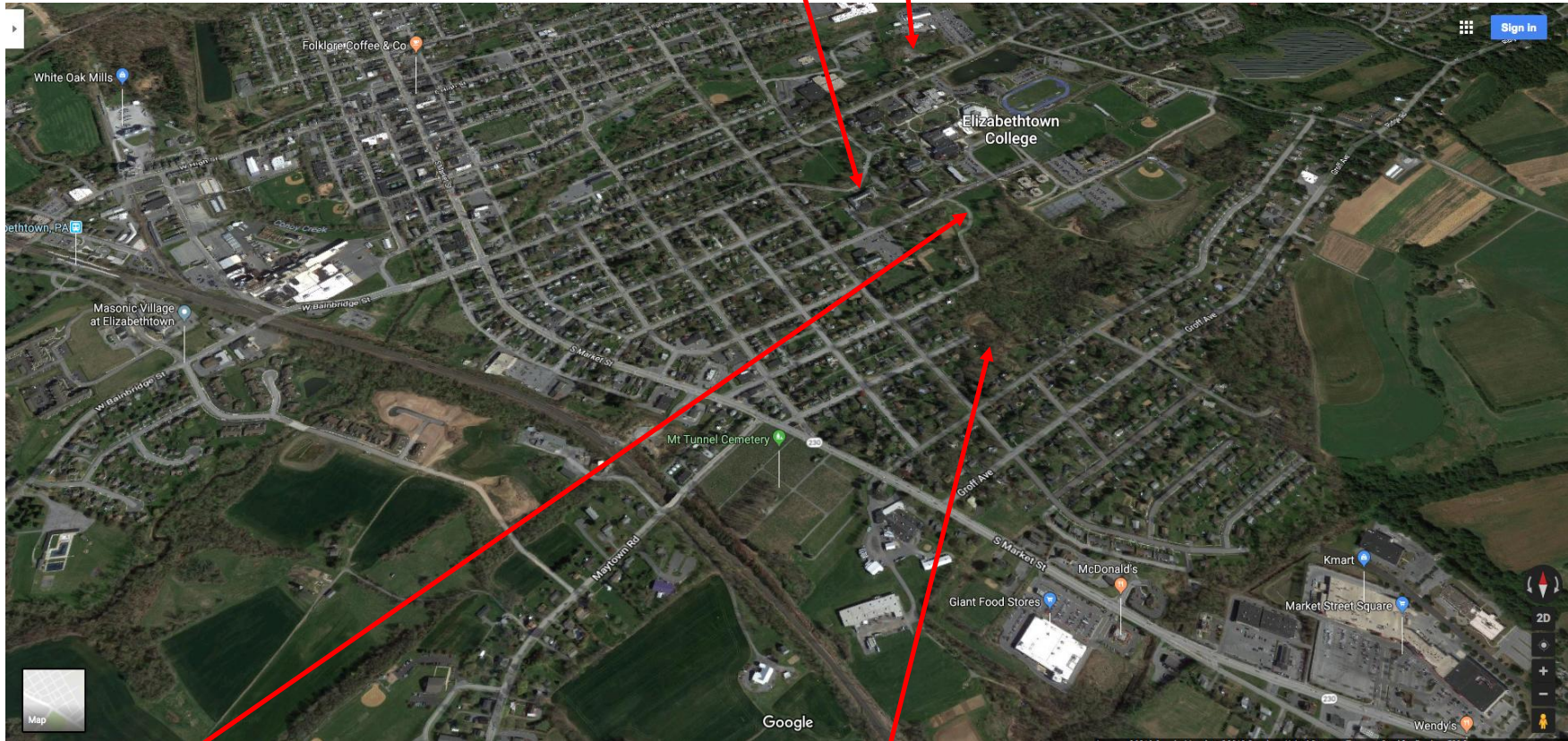
Across College Avenue from Masters Center. (behind the small houses owned by the College); Include a daycare center, and several SDLC's (Student Directed Learning Centers) for STEM, the Arts, and Architecture. including a studio space. Include LEED criteria.

**Team:** Initial site analysis including photo's and analysis of car and pedestrian traffic, landscaping, paths (including lighting). Create a topographical model in Revit or using topographical maps pasted on foam board. Reference College Comprehensive plan.

**Haley & Madison:** Revit drawings (Including natural and man-made lighting)

**Abby:** Collect data on architecture of comparable developments at other colleges; and help with Revit drawings

**Team:** Create a "prospectus" to give to potential investors or donors.



#### CEDAR STREET HOUSING

Four-person units including commons with laundry, kitchen, and gathering space. Include an SDLC (Student Directed Learning Center) for the Arts with a studio space. Include LEED criteria.

**Team:** Initial site analysis including photo's and analysis of car & pedestrian traffic, landscaping, paths (including lighting). Create a topographical model in either Revit, Minecraft, or using maps pasted on foam board. Reference College Comprehensive plan.

**Grant:** Revit Drawings (Including natural and man-made lighting)

**Hunter:** Minecraft simulation

**Kyla:** Collect architecture of comparable developments at other colleges

**Team:** Create a "prospectus" to give to potential investors or donors.

#### HOUSING & ARTS DEVELOPMENT AT LEMON STREET

Apartments, an international students space, an international café/restaurant, an international food store, an art gallery, and a small theatre for movies, plays, and live music. Include LEED criteria.

**Joseph:** Initial site analysis including photo's and analysis of car & pedestrian traffic, landscaping, and paths (including lighting). Analyze present cafés, restaurants, and food stores within walking distance of campus. Create a topographical model in Revit and/or maps on foam board. Reference College Comprehensive plan.

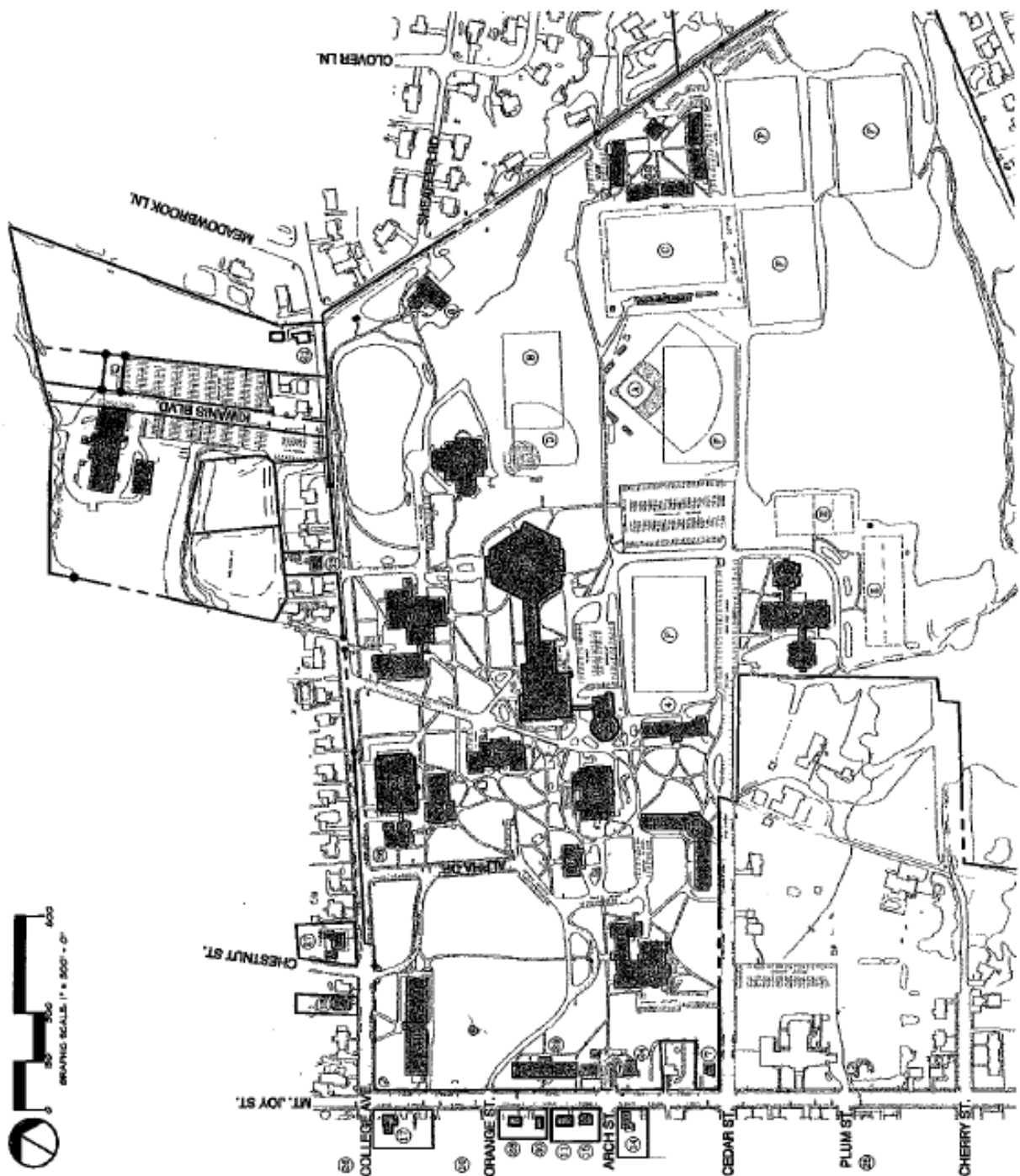
**Joseph:** Revit drawings (Including natural and man-made lighting), Tutor other students on use of Revit, Create a "prospectus" to give to potential investors or donors.



## 2011 update to 1999 Elizabethtown College Comprehensive Plan



# 1999 Elizabethtown College Comprehensive Plan



## Legend

- 1 Alpha Hall
- 2 Armstrong Center
- 3 Bingham Student Center
- 4 Bower Hall
- 5 Brown Building
- 6 Bucher Meeting House / Young Center
- 7 Chaplain's House
- 8 Schenck Hall
- 9 Foresters Hall
- 10 Green Gables
- 11 Hickman House
- 12 Health Center
- 13 High Library
- 14 International House
- 15 Kessler House
- 16 Laffey Chapel
- 17 Lottin House
- 18 Maple House
- 19 Weaver Hall
- 20 Myer Hall
- 21 Myers Residence
- 22 Kiewit Hall
- 23 Oak Hall
- 24 Orchard House / International Center / Public Safety
- 25 Plum Street House
- 26 Pysadack's House
- 27 Reppinger Alumni House
- 28 Reed Garden
- 29 Rorer Hall
- 30 Seider House
- 31 Schlosser Hall
- 32 Schreiber Thimblehouse
- 33 Stanbrough House
- 34 Stanczak Center
- 35 Thompson Gymnasium
- 36 Wright Center
- 37 Zug Memorial Hall

- 38 Baseball Field
- 39 Field Hockey
- 40 Soccer Stadium
- 41 Softball Field
- 42 Tennis Courts
- 43 Practice Fields

## Existing Campus Plan EXC-01

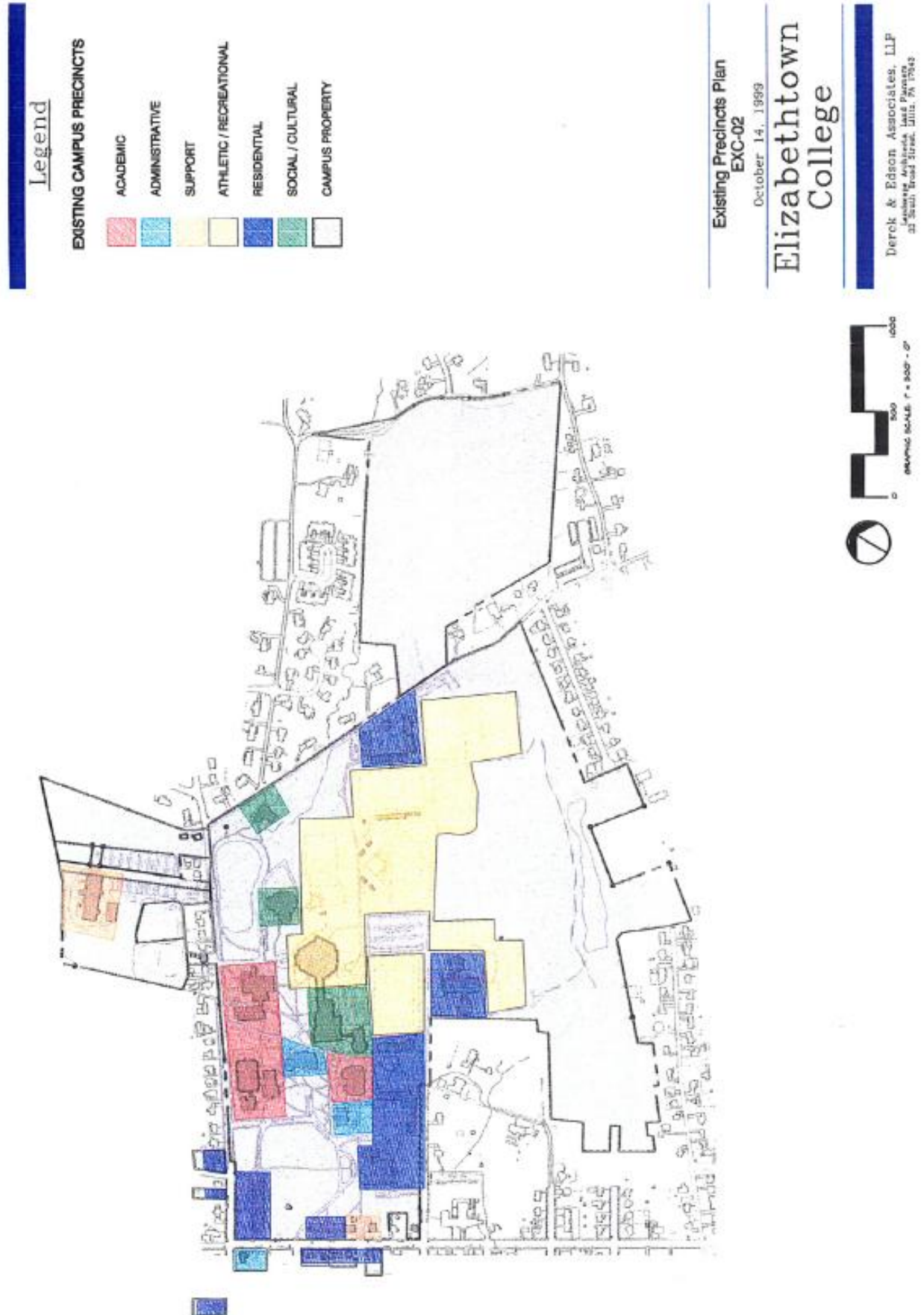
October 14, 1999

# Elizabethtown College

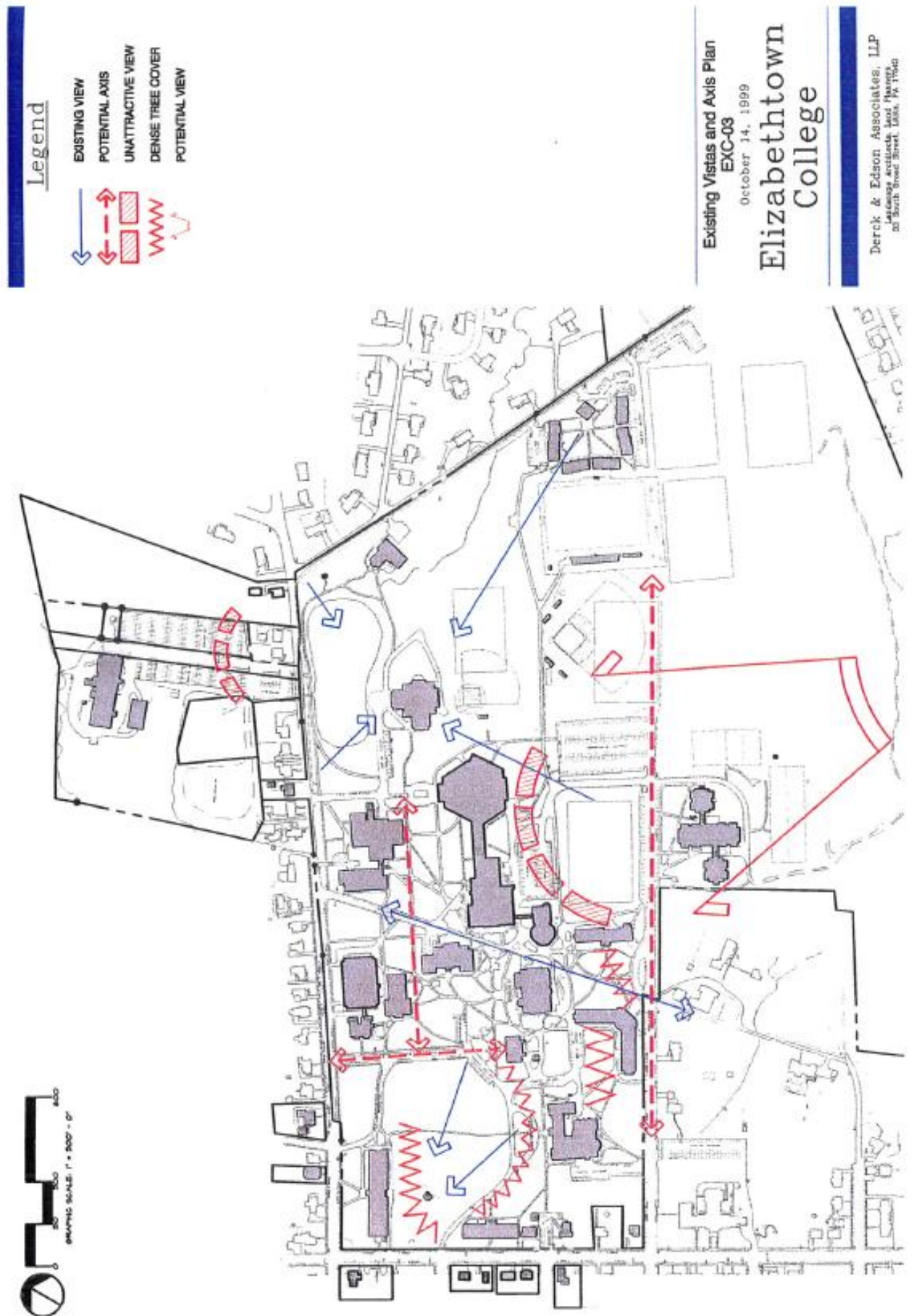
Derick & Edson Associates, LLP  
3000 Walnut Street, Suite 100  
3000 Walnut Street, Suite 100  
3000 Walnut Street, Suite 100



# 1999 Elizabethtown College Comprehensive Plan

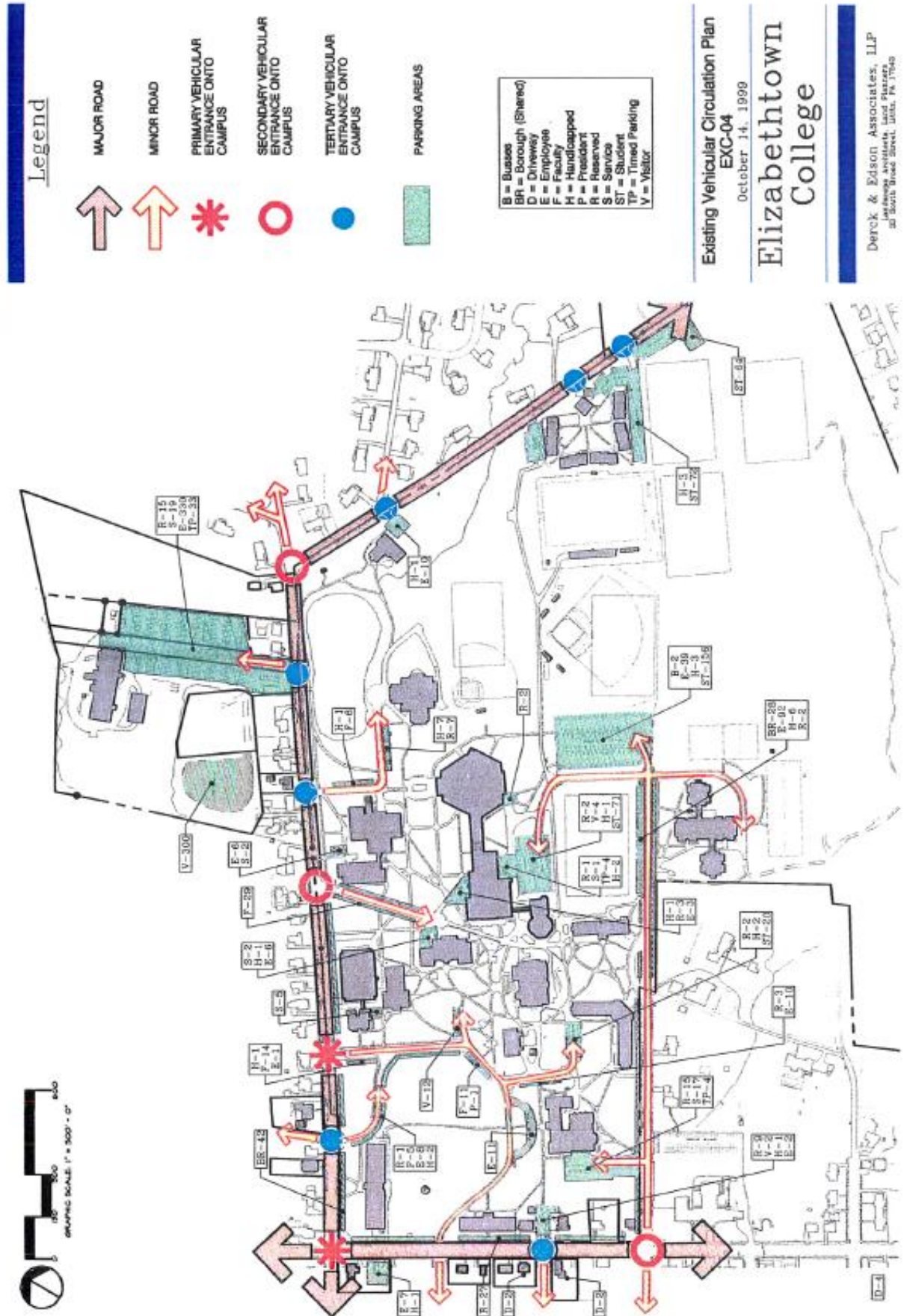


# 1999 Elizabethtown College Comprehensive Plan

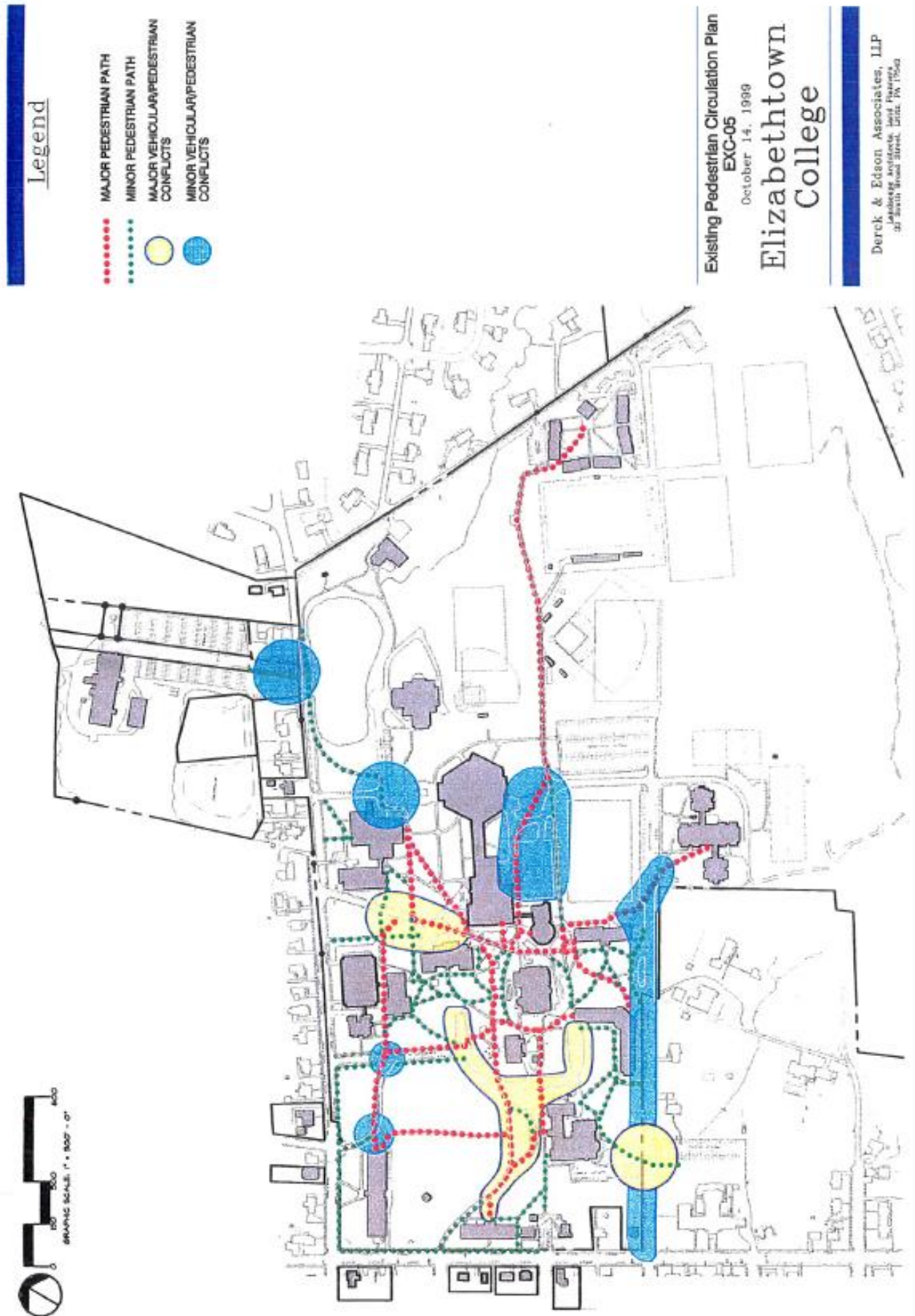




# 1999 Elizabethtown College Comprehensive Plan

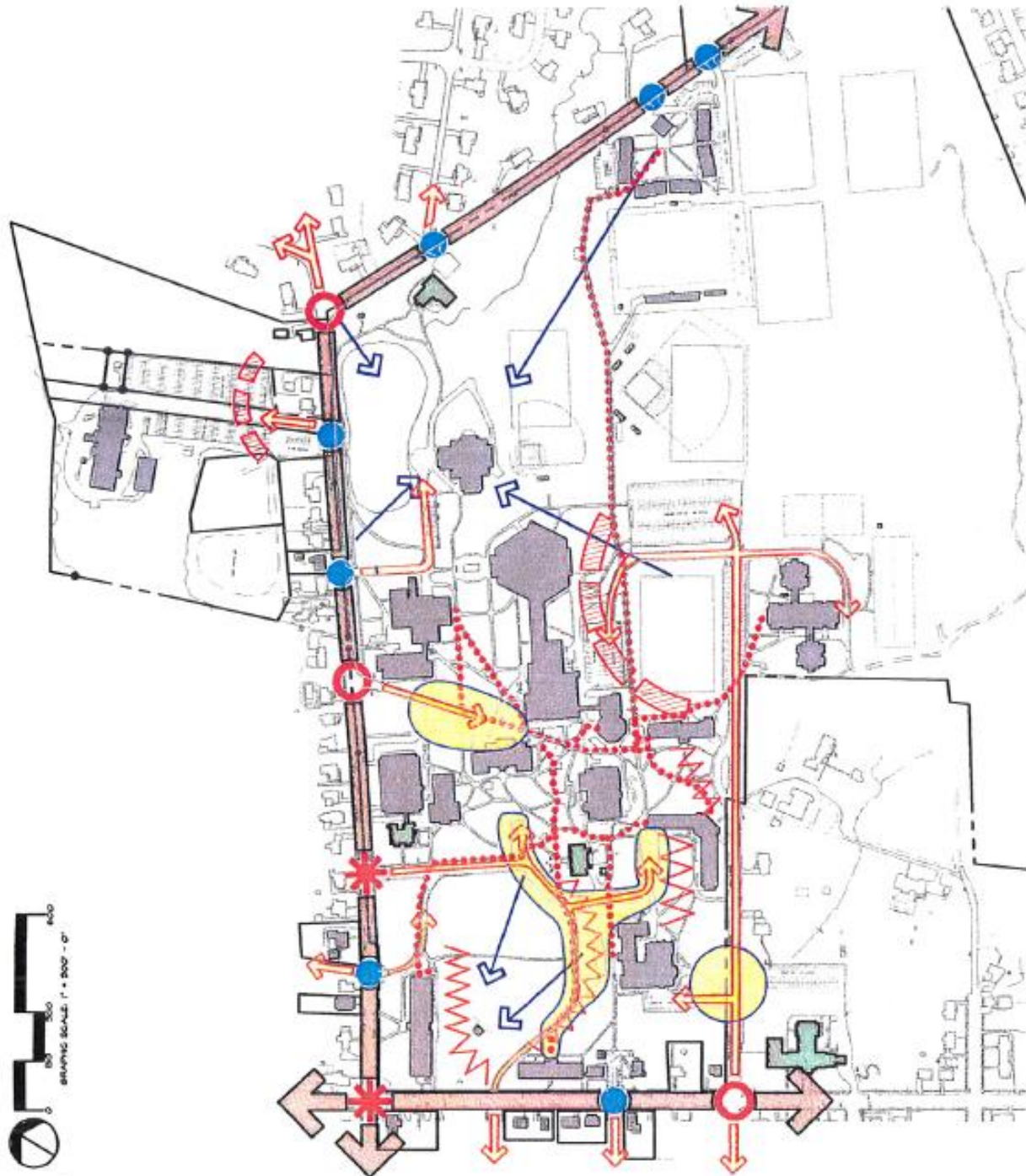


# 1999 Elizabethtown College Comprehensive Plan





# 1999 Elizabethtown College Comprehensive Plan



## Legend

- MAJOR ROAD
- MINOR ROAD
- PRIMARY VEHICULAR ENTRANCE ONTO CAMPUS
- SECONDARY VEHICULAR ENTRANCE ONTO CAMPUS
- TERTIARY VEHICULAR ENTRANCE ONTO CAMPUS
- MAJOR PEDESTRIAN PATH
- MAJOR VEHICULAR/PEDESTRIAN CONFLICTS
- EXISTING VIEW
- UNATTRACTIVE VIEW
- DENSE TREE COVER
- EXISTING HISTORIC BUILDINGS

Composite Analysis Plan  
EXC-06

October 14, 1999

Elizabethtown  
College

Derick & Edison Associates, LLP  
Landscape Architects, Land Planners  
301 South Broad Street, Suite 700, Philadelphia, PA 19106



# 1999 Elizabethtown College Comprehensive Plan

