



# THE LIFE AND WORK OF FRANK LLOYD WRIGHT

PART 4  
Ages 42 (1909) to 47 (1914)  
In Italy and Wisconsin



Wunderlich PhD

website: <http://users.etown.edu/w/wunderjt/> [Architecture Portfolio](#)

8/28/2018



## **PART 1: Frank Lloyd Wright Age 0-19 (1867-1886)** [PDF](#) [PPTX-w/audio](#) [MP4](#) [YouTube](#)

*Context:* Post Civil War recession. Industrial Revolution. Farm life. Preacher/Musician-Father, Teacher-Mother. Mother's large influential Unitarian family of Welsh farmers. Nature. Parent's divorce.

*Architecture:* Froebel schooling (e.g., blocks). Barns/farm-houses ([PDF](#) [PPTX-w/audio](#) [MP4](#) [YouTube](#)). Organic Architecture roots.

## **PART 2: Frank Lloyd Wright Age 20-33 (1887-1900)** [PDF](#) [PPTX-w/audio](#) [MP4](#) [YouTube](#).

*Context:* Rebuilding Chicago after the Great Fire. Wife Catherine and first five children.

*Architecture:* Architects Joseph Silsbee and Louis Sullivan. Oak Park. Home & Studio. "Organic Architecture" begins.

## **PART 3: Frank Lloyd Wright Age 34-41 (1901-1908)** [PDF](#) [PPTX-w/audio](#) [MP4](#) [YouTube](#).

*Context:* First Japan trip ([PDF](#) [PPTX-w/audio](#) [MP4](#) [YouTube](#)). Arts & Crafts movements. Six children.

*Architecture:* Prairie Style. Oak Park & River Forest, Unity Temple, Robie House, Larkin Building.

## **PART 4: Frank Lloyd Wright Age 42-47 (1909-1914)** [PDF](#) [PPTX-w/audio](#) [MP4](#) [YouTube](#) **THIS LECTURE**

*Context:* Runs off with Mistress. Lives in Italy ([Page](#) [MP4](#) [YouTube](#)). Builds Taliesin on family farmland. Mistress murdered.

*Architecture:* Wasmuth Portfolio published(Germany). Taliesin. Many operable windows for health & passive cooling. Sculptures.

## **PART 5: Frank Lloyd Wright Age 48-62 (1915-1929)** [PDF](#) [PPTX-w/audio](#) [MP4](#) [YouTube](#)

*Context:* WWI, Roaring 20's. Short 2<sup>nd</sup> marriage. Lives 3 yrs in Japan, then California and Wisconsin. 3<sup>rd</sup> marriage (Olga).

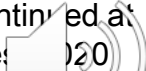
*Architecture:* Tokyo Imperial Hotel. Textile Houses in California (with Mayan influences).

## **PART 6: Frank Lloyd Wright Age 63-78 (1930-1945)** [PDF](#) [PPTX-w/audio](#) [MP4](#) [YouTube](#)

*Context:* 1930's Great Depression. WWII. Taliesin Fellowship/school. Utopian-Ideals(communal-living) Winters in AZ.

*Architecture:* Broadacre City, Fallingwater, Johnson Wax Building, Taliesin-West, Hanna-Honecomb House, Usonian Homes.

## **PART 7: Frank Lloyd Wright Age 79-91 (1946-1958++)** [PDF](#) [MP4](#) [PPTX-w/audio](#) [YouTube](#)

*Context:* Post-WWII boom. Cold War. Communal living at Taliesin. FLW dies in 1959. Fellowship/school continued at Taliesin & Taliesin-West by Olga for 27 years -- and still exists today with some very recent changes. 

*Architecture:* Price Tower, Churches/Synagogue/Auditoriums. The Guggenheim. AZ homes, Modern materials.

Allan, Edward and Iana, Joseph. *Fundamentals of Building Construction: Materials and Methods*. Wiley; 7th edition (October 15, 2019).

American Institute of Architects. *AIA Guide to Chicago*. 2014.

Burns, Ken, and Novick, Lynn. *Frank Lloyd Wright: A Film by Ken Burns and Lynn Novick DVD*. PBS Home Video, August 28, 2001.

Bacon, Edmond. *Design of Cities*. Thames & Hudson Ltd, 1978.

Ching, Francis D.K. *Architecture: Form, Space, and Order*. 4 ed., Wiley, 2014.

Curtis, Stanley James. Friedrich Froebel; German educator. *Encyclopedia Britannica*, 2018. <https://www.britannica.com/biography/Friedrich-Froebel>

Fazio, M., Moffett, M., and Wodehouse, L. *Buildings Across Time: An introduction to world architecture*. 4<sup>th</sup> edition, McGraw-Hill, 2012.

Fici, Filipo. Frank Lloyd Wright in Florence and Fiosole. *Frank Lloyd Wright Quarterly*, Vol. 22 no.4, 2011.

*Find a grave; William Carey Wright*, 2018. <https://www.findagrave.com/memorial/55462361/william-carey-wright>

Frank Lloyd Wright Trust. *1905: Japan through the Lens of Frank Lloyd Wright*, 2017. <https://www.wrightsjapan1905.org/>

Frank Lloyd Wright Trust. *Unity Temple*, 2018. <https://flwright.org/researchexplore/unitytemple>

*Froebel; Brief History of the Kindergarten*. Froebel Gifts, 2013. <http://www.froebelgifts.com/history.htm>

*Ho-o-Den, An Illustrated Description of the Buildings Erected by the Japanese Government at the World's Columbian Exposition*. K. Ogawa publisher, Tokyo, 2018.

Hoffman, Anna. *Gustav Stickley: the American Arts & Crafts Movement*. Sept 16, 2010.

Huxtable, Ada Louise. *Frank Lloyd Wright*. New York Times, Oct. 31, 2004. <https://www.nytimes.com/2004/10/31/books/chapters/frank-lloyd-wright.html>

Kaufman, Clare. *The History of Higher Education in the United States*. WoroldWideLearn. 2018. <https://www.worldwidelearn.com/education-advisor/indepth/history-higher-education.php>

Kitagawa, Joseph Mitsuo. *On Understanding Japanese Religion*. Princeton University Press, 1987.

Lechner, Norbert. *Heating, cooling, lighting*. Wiley, 4<sup>th</sup> edition, October 13, 2014.

*LEED (Leadership in Energy and Environmental Design)*, The United States Green Building Council, 2018. <https://new.usgbc.org/leed>

Life of Olgivanna Lloyd Wright Reviewed by Architects and Artisans. *ORO Editions*. Sep 12, 2017. <https://www.oroeditions.com/2017/09/12/the-life-of-olgivanna-lloyd-wright-reviewed-by-architects-and-artisans/>

Lynch, Kevin. *The Image of The City*. MIT Press, 1960.

*PENN Rare Book and Manuscript: Frank Lloyd Wright's Paternal Family*. Penn Library. University of Pennsylvania, Feb. 20, 2014. <http://www.library.upenn.edu/rbm/featured/mscoll822.html>

Pearson, David. *The Breaking Wave: New Organic Architecture*. Stroud: Gaia, 2001.

Siry, Joseph M. *The Architecture of Earthquake Resistance*. *Journal of the Society of Architectural Historians*, Vol 67 (1): pp78–105, 2008.

Storrer, William Allin. *The Architecture of Frank Lloyd Wright, a Complete Catalog, 4<sup>th</sup> edition*. Chicago, University of Chicago Press, 2017.

Stevens, John L. *Incidence of travel in Yucatán*. Sastrugi Press, 2019.

Stevens, John L. *Incidence of travel in Central America, Chiapas, and Yucatán*. Dover Publications, 1969.

*Unity Chapel*, Unity Chapel Inc. 2018. <http://www.unitychapel.org/familyhistory/>

Vargas, A.P. and Schierle, G.G., The textile block system: seismic analysis and upgrading, *WIT Transactions on State of the Art in Science and Engineering*, Vol 62 WIT Press 2013.

Kim, Daeshick, and Back, Alan. *The Way to go: philosophy in martial arts practice*. Nanam Publishing House, 2000.

Wright, Frank Lloyd. *The Art and Craft of the Machine*, Vol. 8, No. 2 pp. 77-81, 83-85, 87-90, May, 1901. [tps://www.jstor.org/stable/pdf/25505640.pdf](https://www.jstor.org/stable/pdf/25505640.pdf)

Wright, Frank Lloyd. In the Cause of Architecture. *Architectural Record*, vol. XXIII, March 1908.

Wright, Frank Lloyd. *(1911 Wasmuth Portfolio) in Drawings and Plans of Frank Lloyd Wright: The Early Period (1893-1909)*. Dover Architecture 1983.

Wright, Frank Lloyd. *The Japanese Print, an Interpretation*. The Ralph Fletcher Seymour co., Chicago, 1912.

Wright, Frank Lloyd. In the Cause of Architecture; *Second Paper*. *Architectural Record*, May 1914.

Wright, Frank Lloyd. *The Natural House*. New York, Penguin Books, 1954.

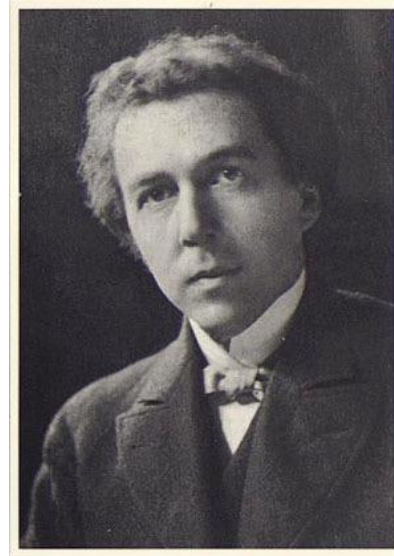
Wright, Frank Lloyd. *Testament*. New York, Bramhall House, 1957.

Zerbey, Nancy. New England Architecture | Guide to House Styles in New England. *New England Today Living*, May 9, 2018. <https://newengland.com/today/living/homes/new-england-architecture/>



○ First, a quick review of:

- PART 1 Ages 0 to 19
- PART 2 Ages 20 to 33
- PART 3 Ages 34 to 41

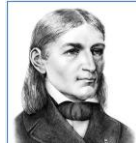




# RECALL FRANK LLOYD WRIGHT'S EARLIEST INFLUENCES (UNTIL AGE 19)

[FROEBEL 2013, PENN RARE BOOK 2014, HUXTABLE 2004, STORRER 2017, WRIGHT 1957, BURNS 2001]

- **FROEBEL** influenced by Taoism and Buddhism
  - Japanese Shinto rooted in Chinese Taoism
    - Shinto Gods in everything, especially **nature**
    - FLW would later love Japanese Art, Design, and Culture
- Mother's family were all **UNITARIANS**
  - Inspiration from all religions, love **nature**, God in everything



Friedrich Froebel  
1782-1852 Germany



Maria **Montessori**  
1913 in Italy



**FATHER**

Preacher, Lawyer, School Superintendent, Teacher, Musician  
 B.A., M.A. Colgate University  
*"Artist, photographer, and designer of furniture, graphics, books, and buildings, his patronage of Chinese and Japanese art, his obsession with every aspect of his surroundings, his dedicated collecting of beautiful things, owed much to his father"* [Huxtable 2004]



**MOTHER**

Homeschool Teacher  
using Froebel System

Others in history homeschooled:  
 Leonardo da Vinci, Monet, Mozart, Bach,  
 Newton, Ben Franklin, Edison, Jefferson,  
 Washington, Einstein, Teddy and  
 Franklin-Delano Roosevelt, Churchill,  
 John Muir, and the Wright brothers



Most of childhood in rural **WISCONSIN**

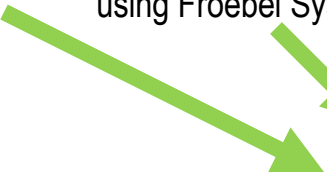
- Like Pennsylvania farmland



Frank Lloyd Wright 1867-1959



Future  
Designers



# Recall: INFLUENCES up to Age 42 (1909)



Farms

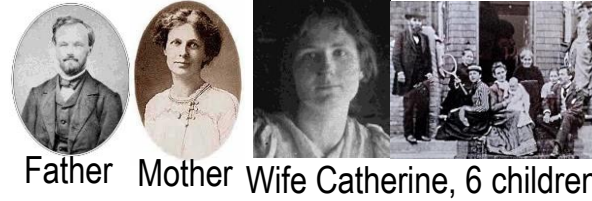
CHICAGO

## PLACES

- New England & Rural Wisconsin until age 20, then Chicago and Oak Park suburb

## PEOPLE

- Father Preacher/Musician, Mother Teacher & Unitarian farm family, Wife and six children
- Other Architects



Father

Mother

Wife

Catherine, 6 children



Allan Conover

Joseph Silsbee

Louis Sullivan

## EVENTS

- In his 20's: Industrial Revolution, Rebuilding Chicago after 1871 fire, 1893 Chicago Worlds Fair with Japanese Building, Designed home and studio, Starts own practice, Designed homes in Oak Park IL
- In his 30's: Becomes famous, firmly establishes his organic architecture and prairie style.
- Visits Japan for first time
- Designs Unity Temple, Robie House, and many other buildings



# ORGANIC ARCHITECTURE

# DESIGN PRINCIPLES

Frank  
Lloyd  
Wright

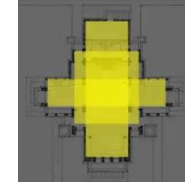
[WRIGHT 1908 , WRIGHT 1954, WRIGHT 1957, WRIGHT 1908]

CONFORM TO SITE, sun, hillsides, planes close to earth identify with ground



PINWHEELED PLANES (Prairie Style) CRUCIFORM

- around BROAD CENTRAL CHIMNEY, and with LONG OVERHANGS



FOLDED PLANE like origami ...continuity...walls, ceilings, and floors become one

HUMAN SCALE is true building scale

FORM and FUNCTION are one! – *not one following other, secondarily*

SIMPLE GEOMETRIES



OPEN FLOOR PLAN



- A unified whole - inside and out - ORCHESTRATE SUN
- DESTROY THE BOX -- eliminate Victorian box-type rooms
- Use materials in NATURAL STATE -- same on exterior and interior
- Walls become screens - FLOW between interior & exterior – BANDS of WINDOWS, FRAME VIEWS
- Interior space made exterior as architecture – like [ENGAWA](#)



COMPRESSION & RELEASE – intentionally cramped entry to magnify architecture as it unfolds

Bring out NATURE of materials - Innovate materials

Color schemes of soft WARM OPTIMISTIC TONES of earth, and autumn leaves

Fixtures assimilated into structure... much of furniture built-in

Architecture = MUSIC ... from an early age !



Inspirations from Japan, and Italy



JT Wunderlich PhD



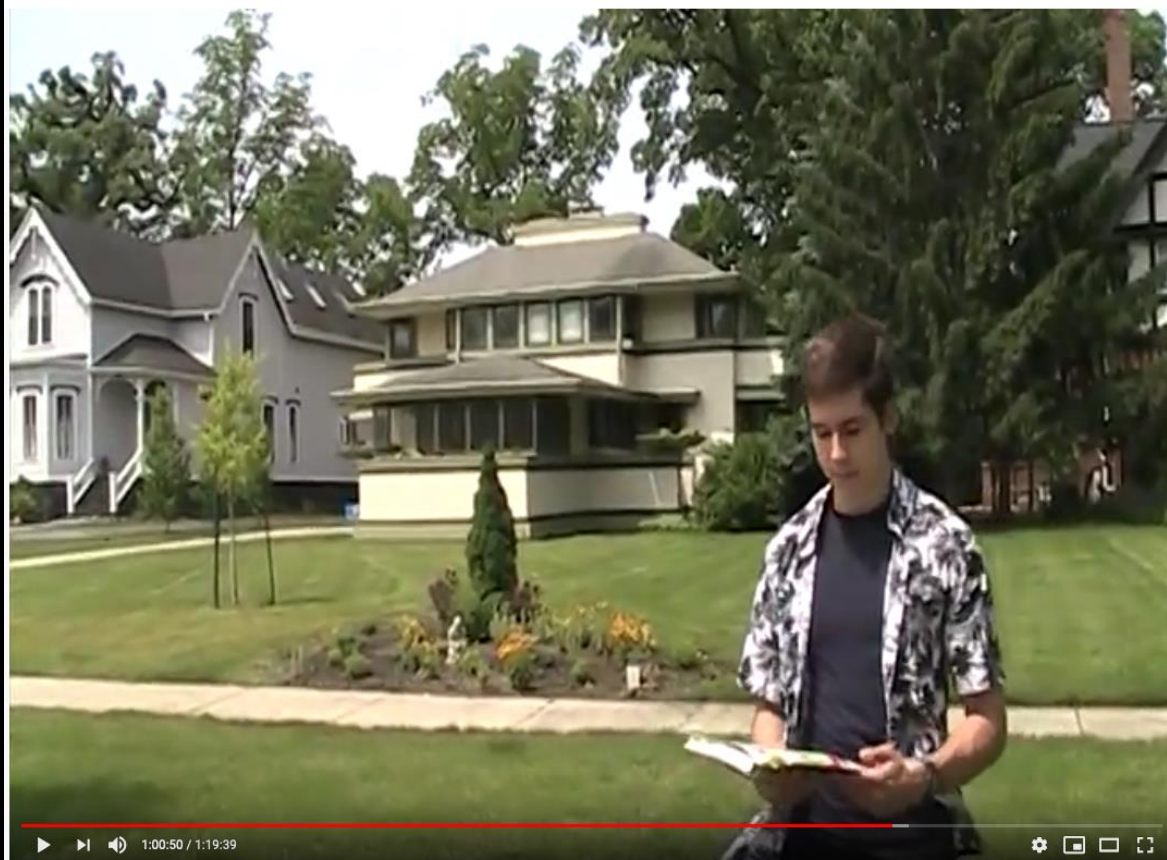
# 42 YEARS OLD (1909)

Clients asked for many operable windows and cross-ventilation to help cure their children of **TUBERCULOSIS** which was very common then.

AND IS A GOOD DESIGN CONCEPT FOR COVID-19



Frank Lloyd Wright



Ingles Residence  
River Forest IL

Wunderlich  
Vlog Lecture  
on  
YouTube Channel

2019,20 LECTURE: 31 Frank Lloyd Wright sites, plus two FLW influenced family homes

211 views • Jul 10, 2019

👍 2 🗨️ 0 ➦ SHARE 📌 SAVE ...



Joseph Wunderlich  
9 subscribers

ANALYTICS

EDIT VIDEO



# MANY OPERABLE WINDOWS and CROSS-VENTILATION is a GOOD DESIGN STRATEGY for COVID-19 in 2020!

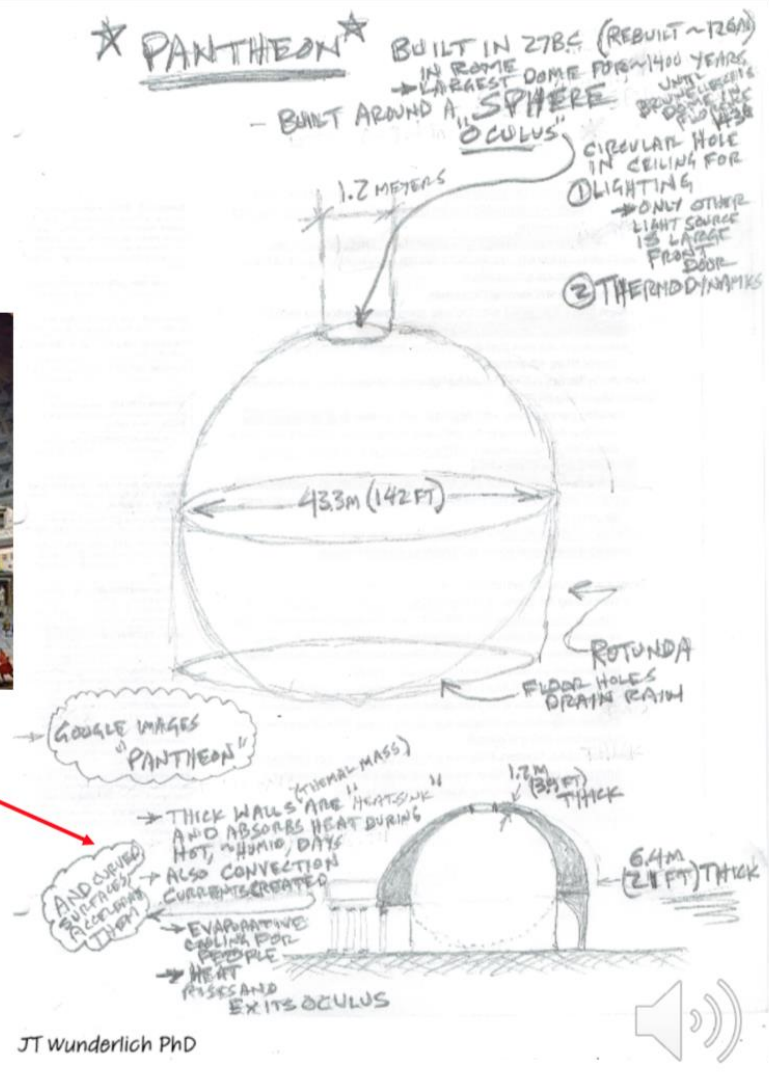
From Wunderlich  
Lecture on "SHELL/ENVELOPE"  
in  
Architectural Materials & Methods  
course, and  
Green Architectural Engineering  
course. And on:  
YouTube Channel

SHELL -> ENVELOPE

CONTROL AIR FLOW

USE IT!

for PASSIVE Heating and Cooling and Fresh Air



JT Wunderlich PhD

J Wunderlich  
Lecture Notes

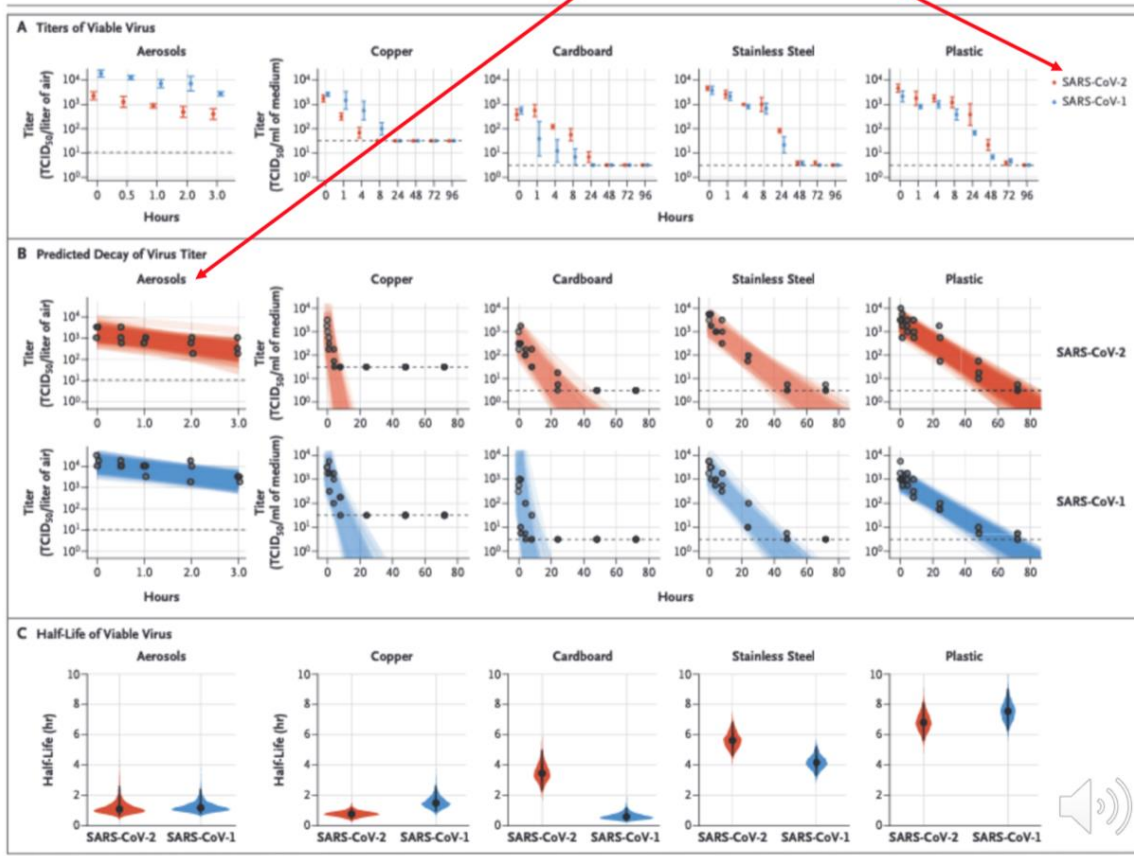




# MANY OPERABLE WINDOWS and CROSS-VENTILATION IS A GOOD DESIGN CONCEPT FOR COVID-19

SHELL -> ENVELOPE

CONTROL AIR FLOW for Fresh Air (let it in)  
(2020 "Covid-19" SARS-Cov-2 Coronavirus Pandemic)



From Wunderlich  
Lecture on  
**“SHELL/ENVELOPE”**  
in Materials &  
Methods course  
on  
**YouTube Channel**



# MANY OPERABLE WINDOWS and CROSS-VENTILATION IS A GOOD DESIGN CONCEPT FOR COVID-19

SHELL -> ENVELOPE

ASHRAE  
American  
Society  
of  
Heating,  
Refrigeration,  
and  
Air-conditioning  
Engineers



Shaping Tomorrow's  
Built Environment Today

1791 Tullie Circle NE • Atlanta, GA 30329-2305 • Tel: 404.636.8400 • Fax: 404.321.5478 • www.ashrae.org

Darryl K. Boyce, P.Eng, FASHRAE  
2019-20 President

Special Advisor, Vice President  
(Finance and Administration)  
Carleton University  
29 Horizon Cres.  
Kemptville, ON K0G 1J0  
Canada  
Phone: 343.549.0585  
[darryl.boyce@carleton.ca](mailto:darryl.boyce@carleton.ca)

March 23, 2020

Dr. Tedros Adhanom Ghebreyesus  
Director General  
World Health Organization  
Avenue Appia 20  
1211 Geneva  
Switzerland

Dear Director General:

As the world responds to the coronavirus disease (COVID-19) pandemic, we want to thank the World Health Organization for its leadership in preventing further spread of the disease and ensuring that accurate scientifically-based information is provided to the media and the public.

Founded in 1894, ASHRAE is a global professional society committed to serve humanity by advancing the arts and sciences of heating ventilation, air conditioning, refrigeration and their allied fields. We write to you to offer our expertise and resources to help limit the spread of the disease in buildings, including hospitals and emergency care centers. With over 57,000 ASHRAE members in 192 chapters located in 132 countries, these resources and technical assistance can be readily disseminated around the world.

ASHRAE has developed proactive guidance to help address COVID-19 concerns with respect to the operation and maintenance of heating, ventilating and air-conditioning systems. [This webpage](https://www.ashrae.org/technical-resources/resources) provides easily accessible resources that can be provided on a complimentary basis to government entities, which include:

- **Isolation Rooms and other Health-Related Spaces:**
  - How to ensure negative pressure airflow to prevent airborne contaminants, bacteria and viruses from escaping the isolation room
  - How to control the air change rate, temperature and humidity with effective controls
  - How to monitor indoor air quality and particulate counts, and how to alert building operators when needed
  - ASHRAE's Technical Committees (TCs) can provide technical guidance on:

CONTROL  
AIR FLOW

From Wunderlich  
Lecture on  
“**SHELL/ENVELOPE**”  
in Materials &  
Methods course  
on  
**YouTube Channel**

<https://www.ashrae.org/technical-resources/resources>



# MANY OPERABLE WINDOWS and CROSS-VENTILATION IS A GOOD DESIGN CONCEPT FOR COVID-19

SHELL -> ENVELOPE

Dr. Tedros Adhanom Ghebreyesus  
Page 2  
March 23, 2020

CONTROL AIR  
FLOW for Fresh Air

- Healthcare Facilities (TC 9.6)
- Laboratory Systems (TC 9.10)
- Clean Spaces (TC 9.11)
- **Ventilation, Filtration and Air Cleaning**
  - How to ensure that occupants in quarantine have healthy indoor environments
  - How to monitor indoor air quality
  - Whether occupants should operate windows
  - Use of ASHRAE Standard 62 for proper ventilation in commercial and residential buildings
  - Use of ASHRAE Standard 170 for proper ventilation in health-care facilities
  - Use of ASHRAE Standard 52.2, *Method of Testing General Ventilation Air-Cleaning Devices for Removal Efficiency by Particle Size*
  - Use of ASHRAE's *Indoor Air Quality Guide* for health care intake and waiting areas, crowded shelters, and similar facilities.
  - Use of ASHRAE's *Position Document on Airborne Infectious Diseases*, which identifies ventilation, particle filtration and UVGI as controls that are demonstrated to be effective.
- **HVAC Systems Design and O&M to prevent spread**
  - How to ensure systems are controlling spread of viruses
  - How to ensure proper use of ventilation rates, airflow regimes, filtration, and ultraviolet germicidal irradiation
  - Whether and how to filter or clean indoor air to protect occupants
  - ASHRAE's Technical Committee 2.9, "Ultraviolet Air and Surface Treatment" can provide additional technical assistance with all aspects of equipment and systems that utilize ultraviolet radiation to destroy or deactivate chemical and/or biological air and surface contaminants in HVAC systems and indoor spaces.

HVAC&R systems play an important role in preventing the spread of infectious disease, and ASHRAE stands at the ready to help provide resources and answer questions. Our vision is to create a healthy and sustainable built environment for all, and we offer our assistance to realize this goal. Please do not hesitate to contact me at [Darryl.boyce@carleton.ca](mailto:Darryl.boyce@carleton.ca). Thank you.

Sincerely,



Darryl Boyce, P. Eng., FASHRAE  
ASHRAE President, SY2019-20

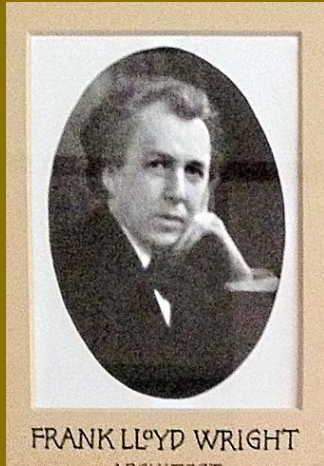


From Wunderlich  
Lecture on  
“**SHELL/ENVELOPE**”  
in Materials &  
Methods course  
on  
**YouTube Channel**



WHEN 42  
YEARS OLD  
1909

HE LEAVES HIS WIFE AND CHILDREN  
AND RUNS OFF TO EUROPE WITH THE  
WIFE OF ONE OF HIS CLIENTS



WRIGHT'S MISTRESS MAMAH CHENEY





42-43 YEARS OLD (1909,1910)

AFTER TRAVELING TO BERLIN, BAVARIA, PARIS, AND  
VIENNA, HE LIVED WITH MAMAH IN  
FIESOLE ITALY, A TOWN OVERLOOKING FLORENCE



Frank Lloyd Wright and his  
Mistress "Mamah" Cheney





# Present Florence, Italy



Frank Lloyd Wright and his  
Mistress "Mamah" Cheney





# 43 YEARS OLD (1910)

## IN FIESOLE ITALY, OVERLOOKING FLORENCE



Frank Lloyd Wright and his  
Mistress "Mamah" Cheney

### FROM VILLINO (VILLA) BELVEDERE



43 YEARS OLD (1910)

IN FIESOLE ITALY,  
OVERLOOKING FLORENCE

FROM VILLINO (VILLA) BELVEDERE



Frank Lloyd Wright and his  
Mistress "Mamah" Cheney





43 YEARS OLD (1910)

IN FIESOLE ITALY,  
OVERLOOKING FLORENCE



Frank Lloyd Wright and his  
Mistress "Mamah" Cheney

FROM VILLINO (VILLA) BELVEDERE







COMUNE  
DI  
FIESOLE  
QUI DIMORÒ NEL 1910  
L'ARCHITETTO FRANK LLOYD WRIGHT  
8 6 1869 - 9 4 1959  
FIESOLE FEBBRAIO 1994

Convent of San Domenico, Fiesole  
FH55 Hotel Villa Fiesole  
Pensione Bencistà

READ

Piazza della Libertà

Galleria dell'Accademia di Firenze

Cattedrale di Santa Maria del Fiore

Florence

Frank Lloyd Wright in Florence and Fiesole Italy, 1909, 1910



# Frank Lloyd Wright in Fiesole Italy, 1909,10 – with a view of Florence



Frank Lloyd Wright and his Mistress "Mamah" Cheney





# Frank Lloyd Wright in Fiesole Italy, 1909,10 – with a view of Florence



Frank Lloyd Wright and his Mistress "Mamah" Cheney



Design107  
Street View - Apr 2018



Google





43 YEARS OLD (1910)

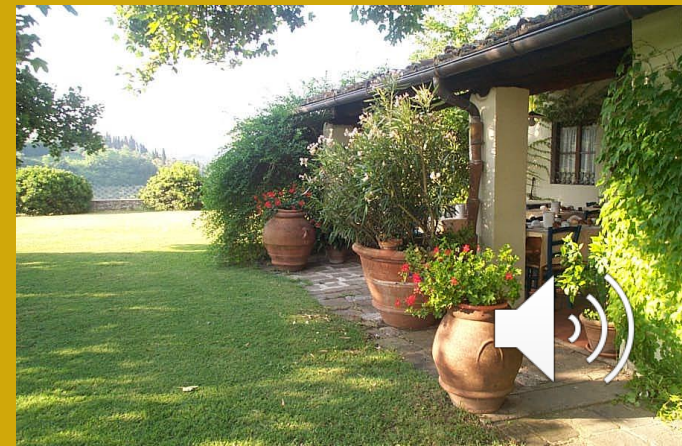
IN FIESOLE ITALY,  
OVERLOOKING FLORENCE



Frank Lloyd Wright and his  
Mistress "Mamah" Cheney



J WUNDERLICH IN FIESOLE ITALY IN 2004 , OVERLOOKING FLORENCE



# FLORENCE ITALY



Frank Lloyd Wright and his  
Mistress "Mamah" Cheney



J WUNDERLICH  
IN 2004 AND 2014







J WUNDERLICH  
IN 2004 AND 2014





J WUNDERLICH  
IN 2004 AND 2014



JT WUNDERLICH PHD IN FLORENCE IN 2004 AND 2014;  
PHOTOS BY JJ WUNDERLICH JR IN 2014





J WUNDERLICH  
IN 2004 AND 2014



JJ WUNDERLICH (SON, AND *FUTURE ARCHITECT*)  
UNIVERSITY OF FLORENCE  
SCHOOL OF ARCHITECTURE LIBRARY



# MORE ITALIAN ARCHITECTURE STUDIED BY J WUNDERLICH ON SIX TRIPS [HERE](#)



2004 Genoa, Santa Margherita,  
Portofino, Tuscany, Florence, Milan



2011 Rome, Padua, Venice



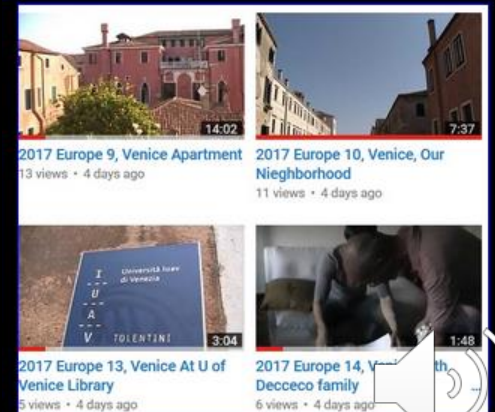
2008 Trento, Rovereto,  
Venice, Verona



2014 Venice, Padua, Florence  
(and Belgium, England)



2009 Trento, Bolzano/Oberbozen  
(and Switzerland, Austria)



2017 Europe 9, Venice Apartment  
13 views • 4 days ago

2017 Europe 10, Venice, Our  
Neighborhood  
11 views • 4 days ago

2017 Europe 13, Venice At U of  
Venice Library  
5 views • 4 days ago

2017 Europe 14, Venice  
Dececco family  
6 views • 4 days ago

2017 Venice  
(and Austria, Germany)

My Italian  
Vocabulary:  
QUESTO



43 YEARS OLD (1910)  
IN FIESOLE ITALY,  
OVERLOOKING FLORENCE



Frank Lloyd Wright and his  
Mistress "Mamah" Cheney



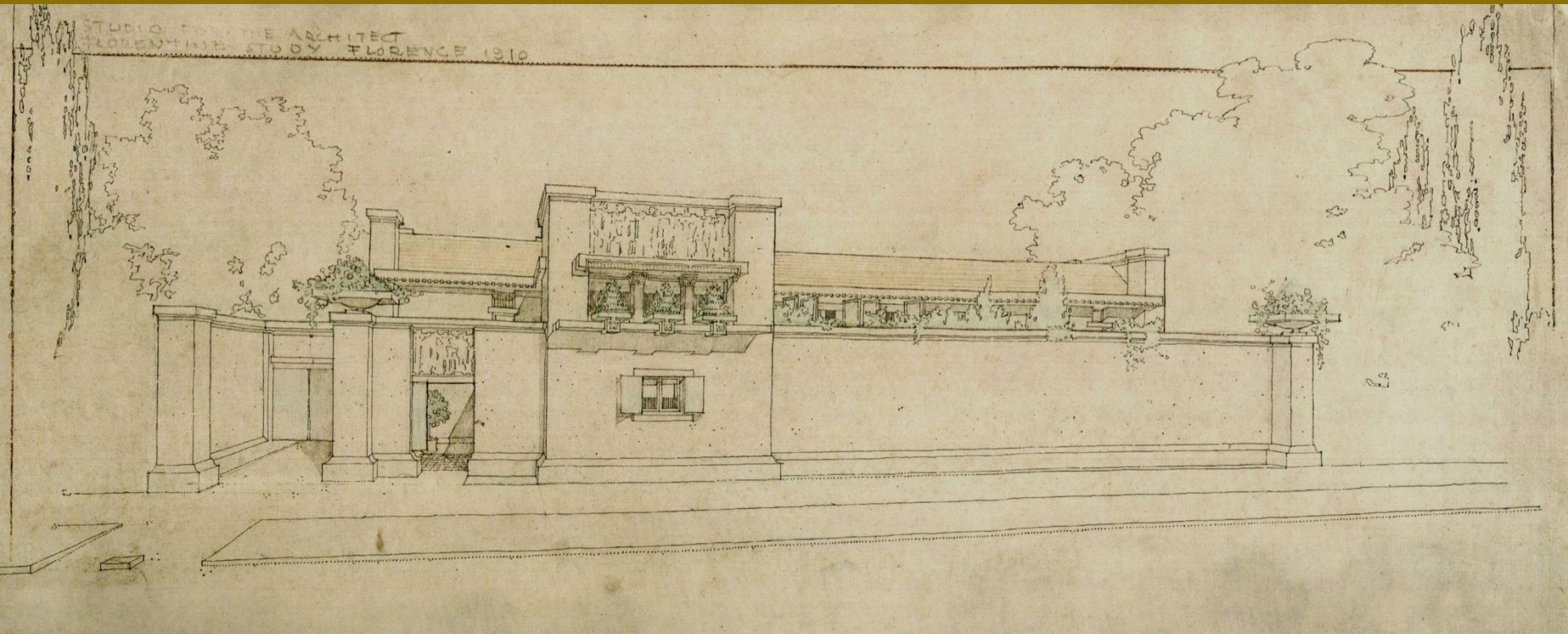


43 YEARS OLD (1910)

IN FIESOLE ITALY,  
OVERLOOKING FLORENCE



Frank Lloyd Wright and his  
Mistress "Mamah" Cheney



*"1910 - The Frank Lloyd Wright and Mamah Cheney Studio/Residence, Fiesole, Italy. The building was brought directly to the street edge permitting an enclosed and secluded garden within. Wright returned to America and it was unbuilt."* <http://www.usmodernist.org/wright.htm>





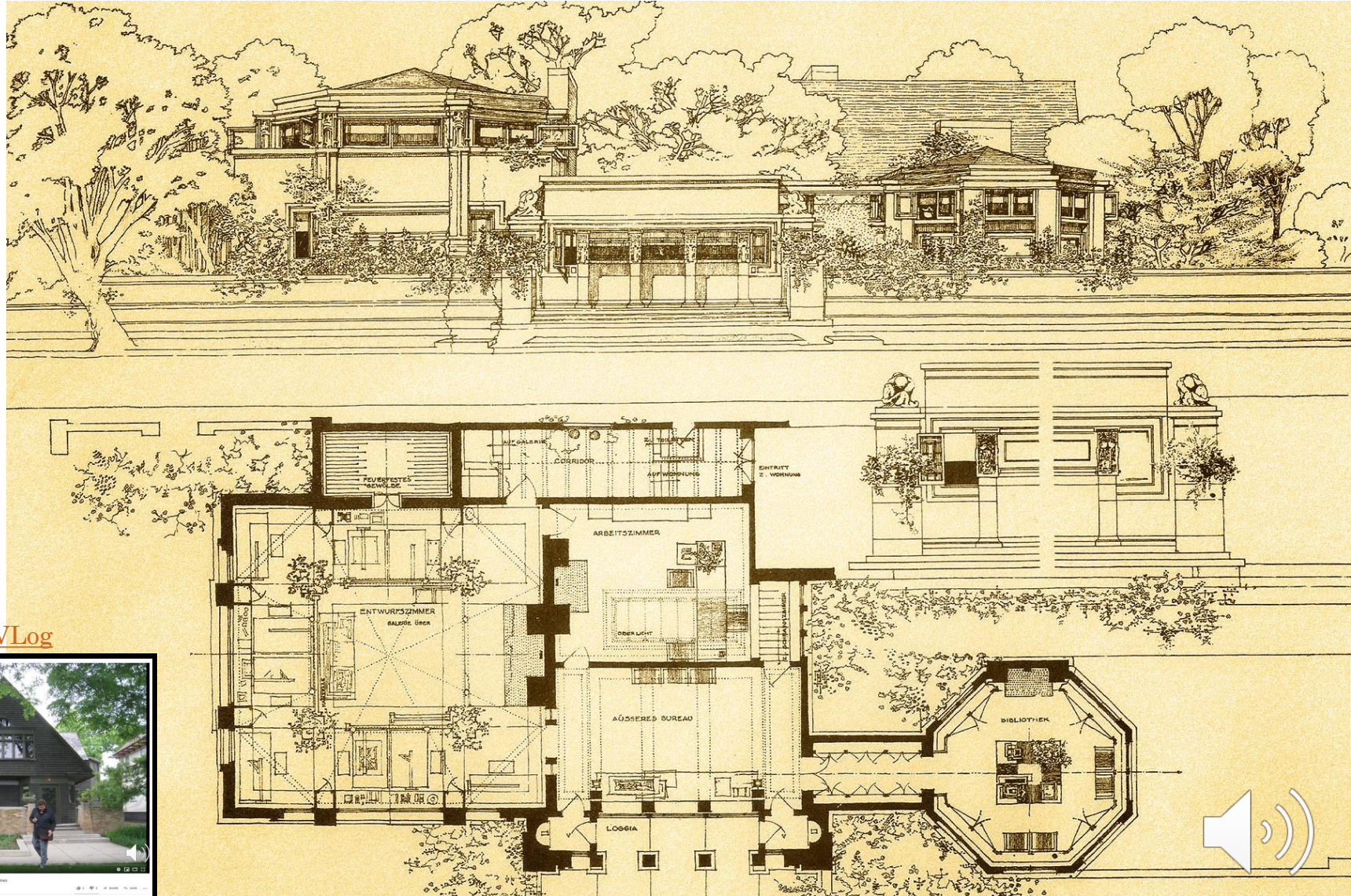
up to Age 44 (1911)

- 1911 Published influential book of designs in Germany "Wasmuth Portfolio"

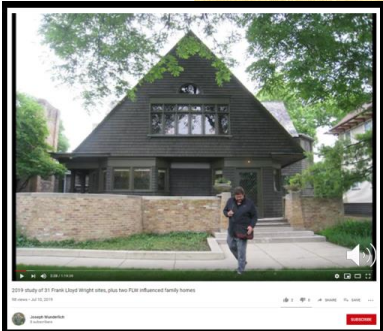


Frank Lloyd Wright

His 1889 home & studio in Oak Park



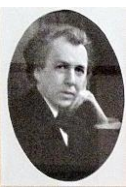
Wunderlich VLog





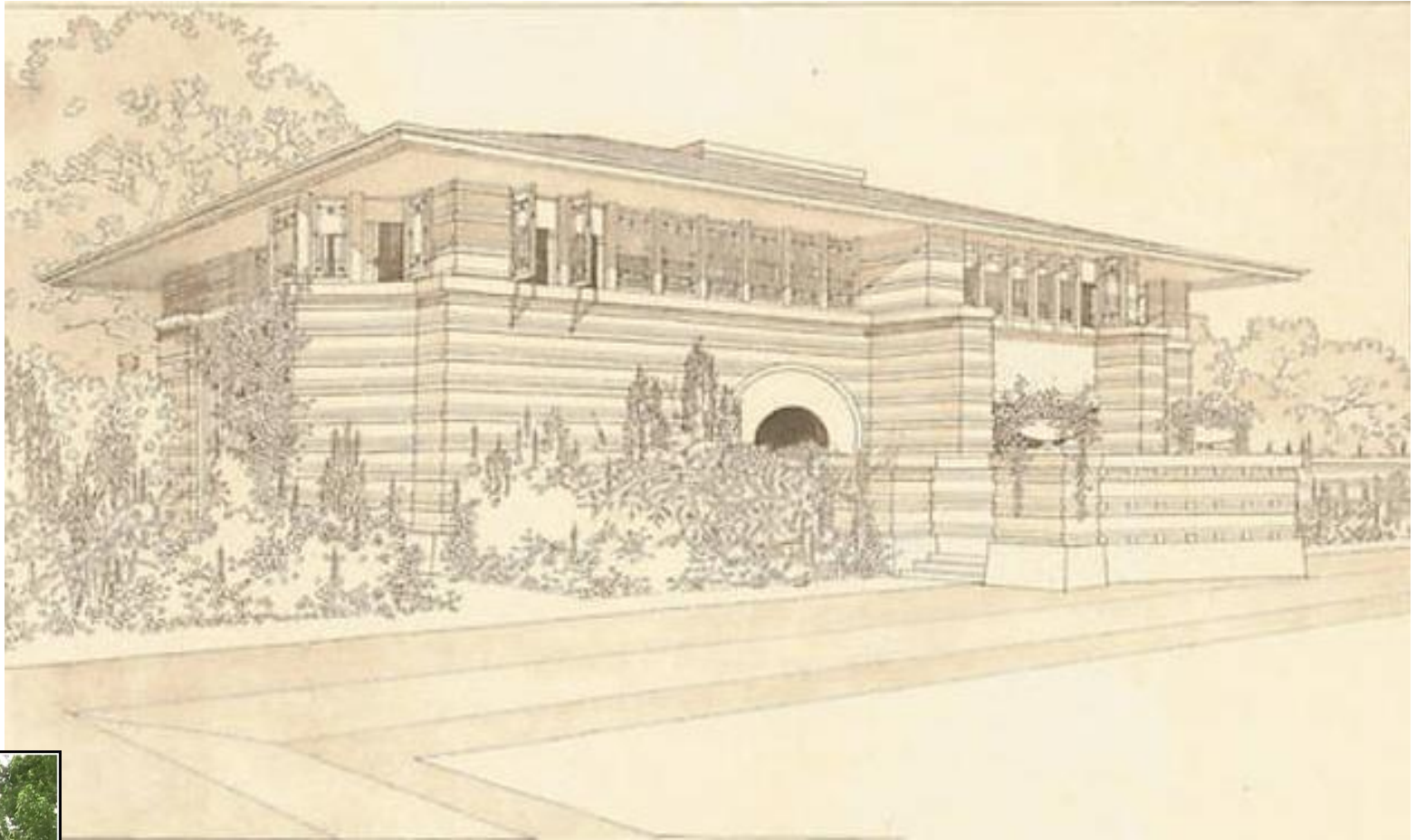
up to Age 44 (1911)

- 1911 Published influential book of designs in Germany “*Wasmuth Portfolio*”



Frank Lloyd Wright

His 1902 Heurtley Residence in Oak Park



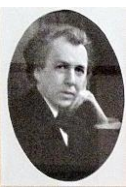
Wunderlich [VLog](#)





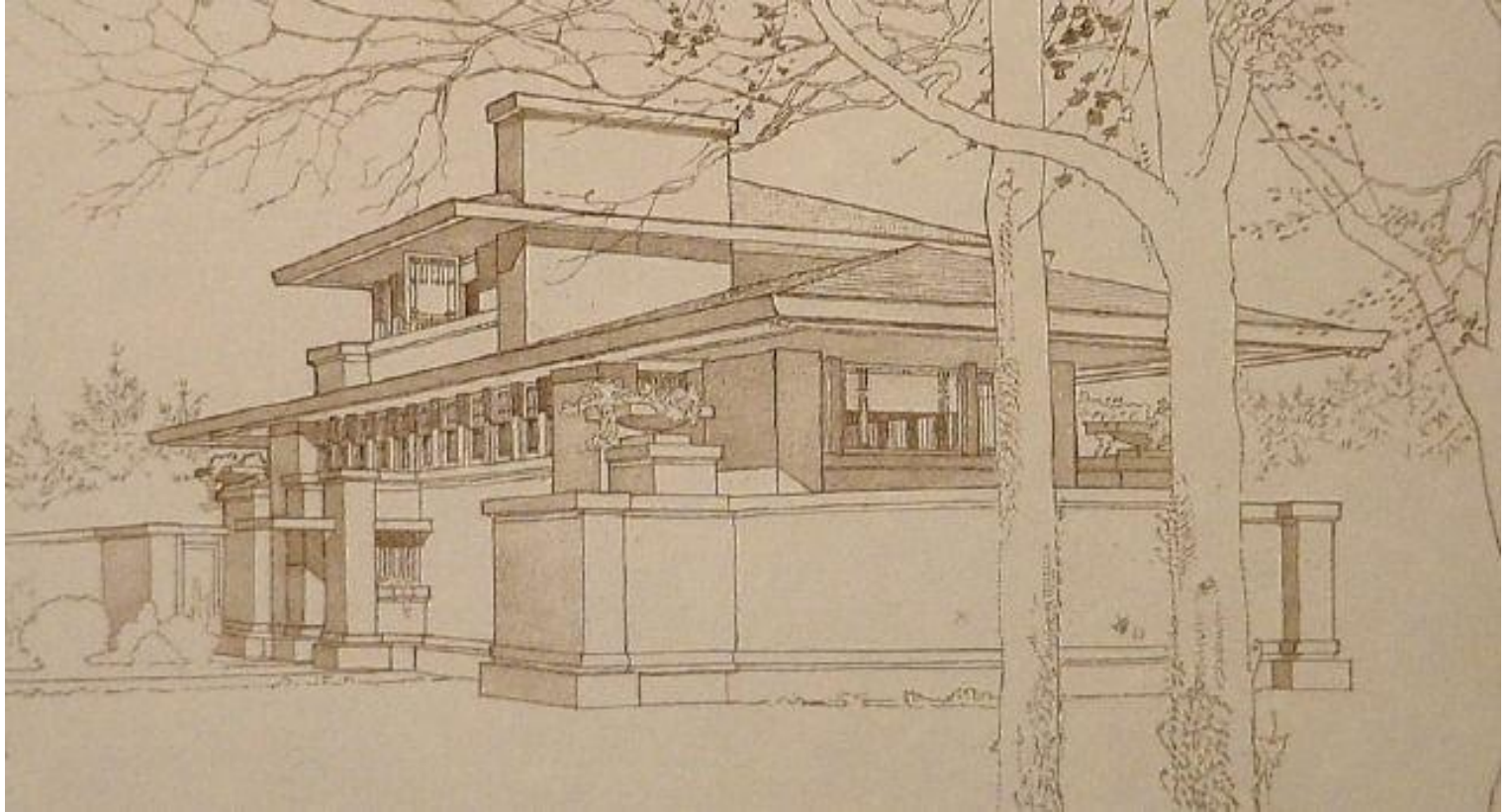
up to Age 44 (1911)

- 1911 Published influential book of designs in Germany “*Wasmuth Portfolio*”



Frank Lloyd Wright

His 1909 Robie House in Chicago



Wunderlich [VLog](#)

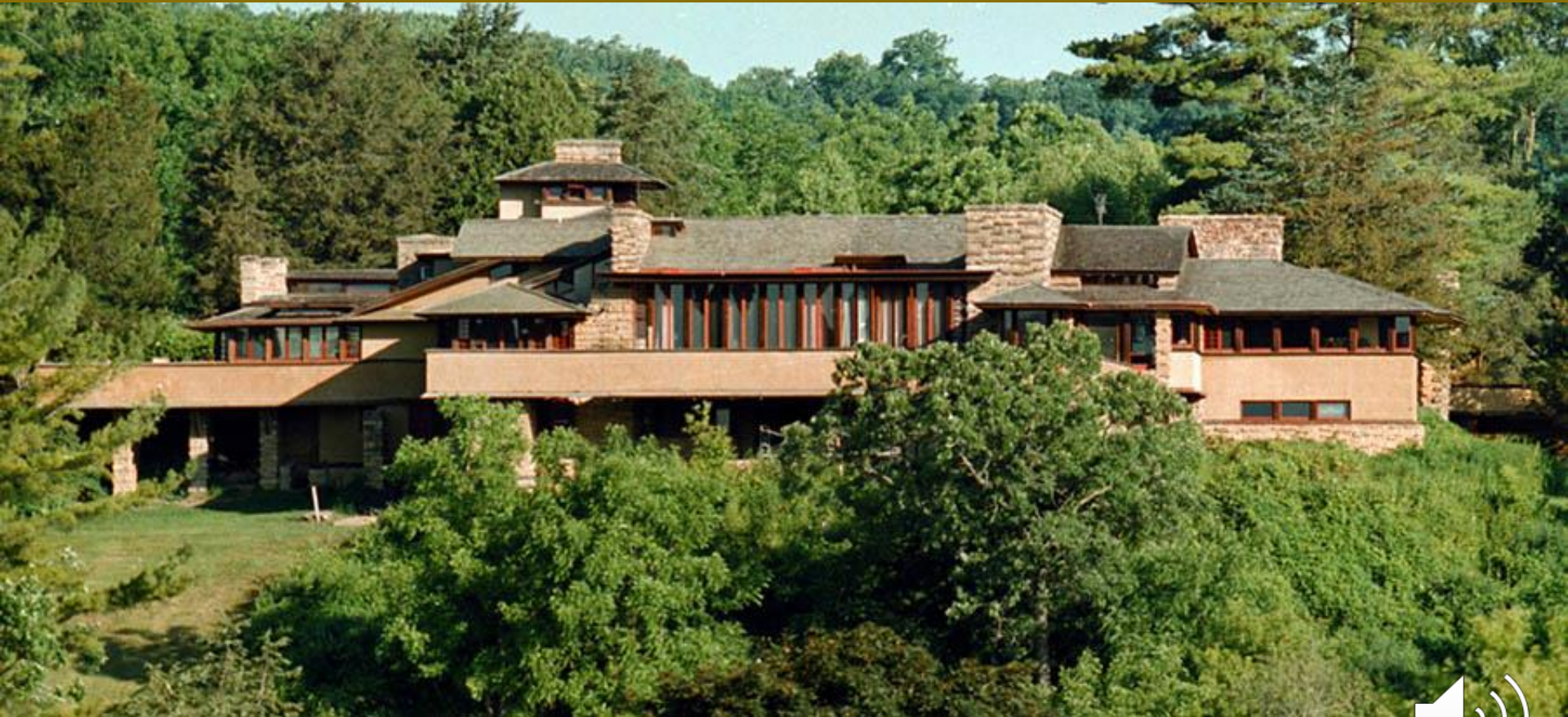


44 YEARS OLD (1911)

RETURNS TO MADISON WISCONSIN AND BUILDS  
TALIESIN ON MOTHER'S LAND



Frank Lloyd Wright and his  
Mistress "Mamah" Cheney



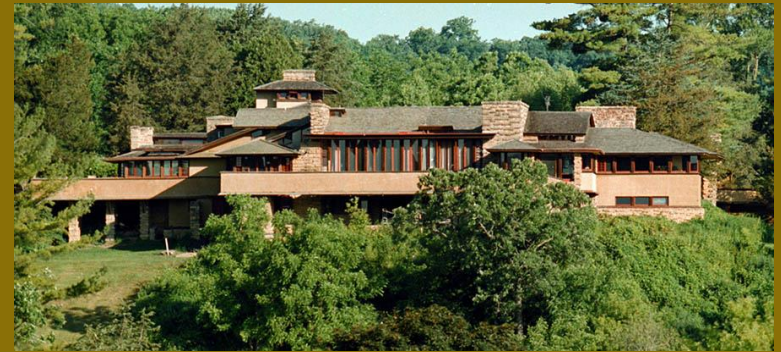


# 44 YEARS OLD (1911)



Frank Lloyd Wright and his  
Mistress "Mamah" Cheney

Look for similarities between what he may have seen in Italy and perhaps some new ideas being implemented into Taliesin when he returned to the U.S.



44 YEARS OLD (1911)

# TALIESIN



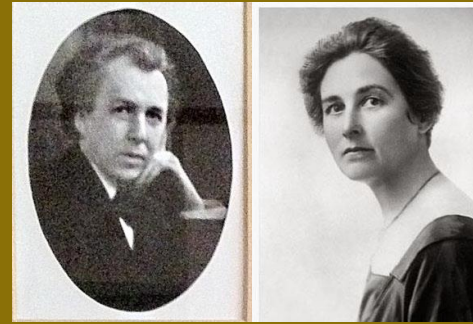
Frank Lloyd Wright and his  
Mistress "Mamah" Cheney



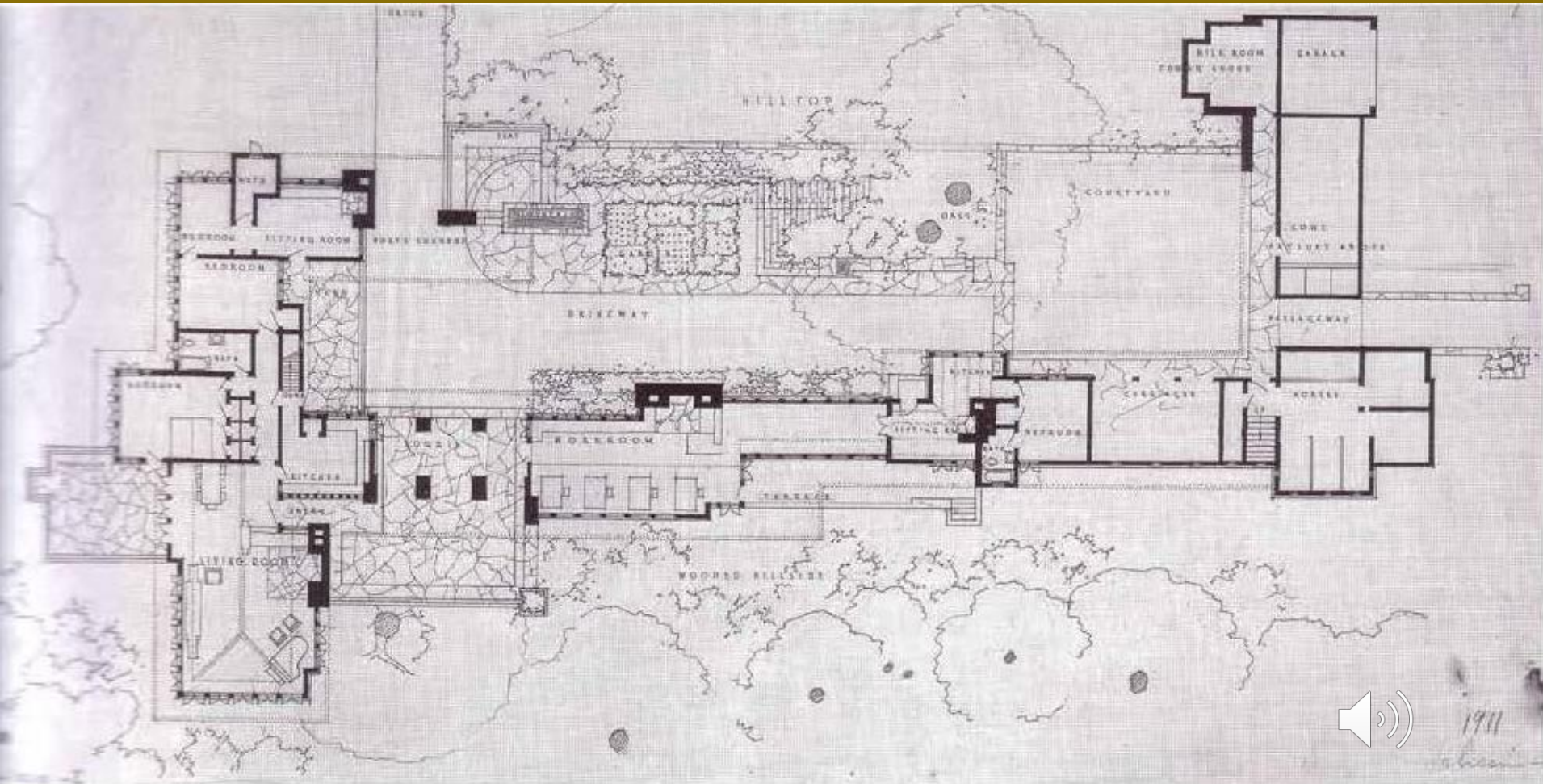


44 YEARS OLD (1911)

# TALIESIN



FRANK LLOYD WRIGHT' AND HIS  
MISTRESS MAMAH CHENEY



1911

Taliesin

44 YEARS OLD (1911)

# TALIESIN

Stop and watch this video

<https://www.youtube.com/watch?v=nfc-EK6F7j0>



Frank Lloyd Wright and his Mistress "Mamah" Cheney

**Keiran Murphy**  
Historic Research - Taliesin Preservation, Inc.  
Spring Green, WI

August 17, 2009  
www.wiseye.org

W EYE

VIDEO TOUR: Frank Lloyd Wright's Taliesin and Hillside School Complex

67,815 views • Jan 2, 2018

720 21 SHARE SAVE ...

Taliesin Preservation  
479 subscribers

SUBSCRIBE





In 2004 Professor Wunderlich was looking for inspirations to apply to his Pennsylvania design, including whether to build a tower.  
Here's pictures of towers on his travels in Italy:

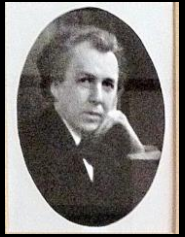


Tower Here?



# 44 YEARS OLD (1911)

One of FLW's first designs after returning from Italy;  
With over 50 operable casement windows for natural ventilation;  
a common practice in Italy instead of air conditioning, even today



Frank Lloyd Wright

Balch Residence  
Oak Park, IL



2019,20 LECTURE: 31 Frank Lloyd Wright sites, plus two FLW influenced family homes

211 views • Jul 10, 2019

👍 2 🗨️ 0 ➦ SHARE ➦ SAVE ...



Joseph Wunderlich  
9 subscribers

ANALYTICS

EDIT VIDEO

Wunderlich  
Vlog Lecture  
on  
YouTube Channel





# 46 YEARS OLD (1913)



Frank Lloyd Wright

Adams Residence  
Oak Park, IL

turning point at  
the end of the  
peak of prairie  
style homes



2019,20 LECTURE: 31 Frank Lloyd Wright sites, plus two FLW influenced family homes

211 views · Jul 10, 2019

👍 2 🗨️ 0 ➔ SHARE ⚙️ SAVE ...

 **Joseph Wunderlich**  
9 subscribers

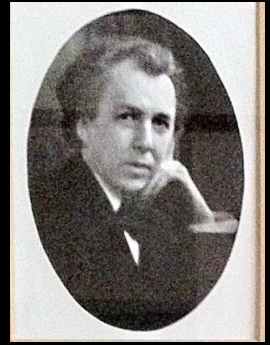
ANALYTICS

EDIT VIDEO

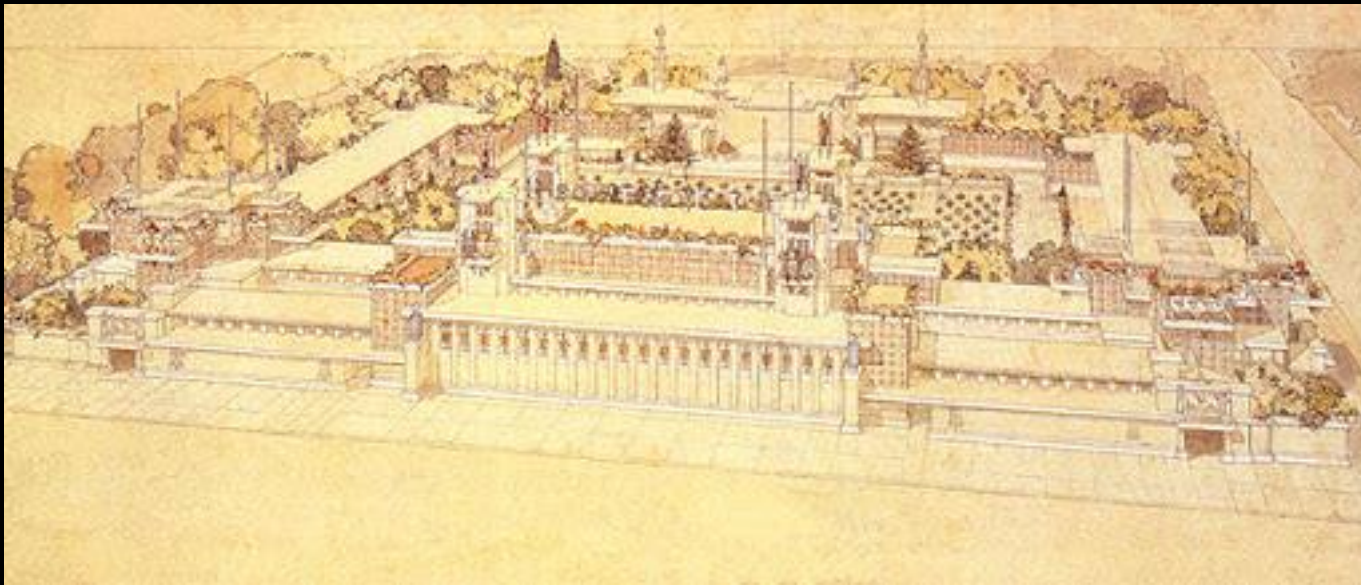
Wunderlich  
Vlog Lecture  
on  
YouTube Channel



47 YEARS OLD (1914)



Frank Lloyd Wright



Midway Gardens  
Chicago, IL

Demolished in 1929

But statues (“sprites”)  
sculpted by Italian  
artist Alfonso Iannelli,  
often replicated to  
this day



The Wright designed, Midway Gardens sprites were later replicated to the [Arizona Biltmore Hotel](#)



City National Bank Building and Park Inn Hotel	S.155	Mason City	USA	Iowa	1908-09	1909-10	Open for public tours	
Edmund F. Brigham House	S.184	Glencoe	USA	Illinois	1908-09	1915		
Mrs. Thomas H. Gale House	S.098	Oak Park	USA	Illinois	1909	1909		
Como Orchard Summer Colony	S.144	Darby	USA	Montana	1909			
Bitter Root Inn <sup>[43]</sup>	S.145	Stevensville	USA	Montana	1909		Destroyed by fire 1924	
Frank J. Baker House	S.151	Wilmette	USA	Illinois	1909	1909		
Oscar M. Steffens House <sup>[44]</sup>	S.153	Chicago	USA	Illinois	1909		Demolished 1963	
W. Scott Thurber Art Gallery	S.154	Chicago	USA	Illinois	1909		Interior design Demolished by 1917 (redesigned for a new tenant)	
George C. Stewart House (Butterfly Woods) <sup>[45]</sup>	S.160	Montecito	USA	California	1909			
J. Kibben Ingalls House <sup>[46]</sup>	S.161	River Forest	USA	Illinois	1909			



Frank Lloyd Wright  
42 TO 47 YEARS OLD  
(1909 TO 1914)

SOURCE:  
[HTTPS://EN.WIKIPEDIA.ORG/WIKI/LIST OF FRANK LLOYD WRIGHT WORKS](https://en.wikipedia.org/wiki/List_of_Frank_Lloyd_Wright_works)



Peter C. Stohr Arcade Building <sup>[47]</sup>	S.162	Chicago	USA	Illinois	1909		Demolished 1922	
Edward P. Irving House <sup>[48]</sup>	S.165	Decatur	USA	Illinois	1909			
Edward C. Waller Bathing Pavilion	S.166	Charlevoix	USA	Michigan	1909		Destroyed by fire c1922	
Rev. Jessie R. Zeigler House	S.164	Frankfort	USA	Kentucky	1909	1910	Based on "A Fireproof House for \$5000"	
New York City Exhibition for the Universal Portland Cement Company	S.163	New York	USA	New York	1910	1910	Temporary structure Demolished	
Ingwald Moe House <sup>[49]</sup>		Gary	USA	Indiana	1910			
Walter Gerts House (remodel)	S.177	River Forest	USA	Illinois	1911	1911		
Oscar B. Balch House	S.168	Oak Park	USA	Illinois	1911	1911		
Herbert Angster House	S.169	Lake Bluff	USA	Illinois	1911		Demolished 1956	
Chicago & Milwaukee Electric Railway Station <sup>[50]</sup>		Glencoe	USA	Illinois	1911		Demolished mid-1950s	






Frank Lloyd Wright  
42 TO 47 YEARS OLD  
(1909 TO 1914)

SOURCE:

[HTTPS://EN.WIKIPEDIA.ORG/WIKI/LIST OF FRANK LLOYD WRIGHT WORKS](https://en.wikipedia.org/wiki/List_of_Frank_Lloyd_Wright_works)





Sherman M. Booth Cottage	S.178	Glencoe	USA	Illinois	1911			
Banff National Park Pavilion	S.170	Banff	Canada	Alberta	1911	1913-14	Demolished 1939	
Lake Geneva Hotel <sup>[51]</sup>	S.171	Lake Geneva	USA	Wisconsin	1911		Demolished 1970	
Taliesin I	S.172	Spring Green	USA	Wisconsin	1911	1911	Partially destroyed by fire 1914	
The Avery Coonley School Playhouse <sup>[52]</sup>	S.174	Riverside	USA	Illinois	1911	1912		
Francis W. Little House <sup>[53]</sup>	S.173	Wayzata	USA	Minnesota	1912	1912-14	Demolished 1972 Living room displayed at <a href="#">The Met, NYC</a> Library displayed at <a href="#">The Allentown Art Museum, PA</a> Hallway displayed at <a href="#">The Minneapolis Institute of Arts, MN</a>	
Observation Platform for Island Woolen Mills <sup>[54]</sup>	S.143	Baraboo	USA	Wisconsin	1912		Demolished in the early 1970s	
William B. Greene House <sup>[55]</sup>	S.176	Aurora	USA	Illinois	1912			
Park Ridge Country Club	S.175	Park Ridge	USA	Illinois	1912	1912	Remodel Demolished 1930	



Frank Lloyd Wright  
42 TO 47 YEARS OLD  
(1909 TO 1914)

SOURCE:  
[HTTPS://EN.WIKIPEDIA.ORG/WIKI/LIST OF FRANK LLOYD WRIGHT WORKS](https://en.wikipedia.org/wiki/List_of_Frank_Lloyd_Wright_works)



Harry S. Adams House <sup>[56]</sup>	S.179	Oak Park	USA	Illinois	1913			
N N Souther Residence	S.179.11a	River Forest	USA	Illinois	1913		Williams St. <sup>[57]</sup>	
M F Russell Residence	S.179.12a	River Forest	USA	Illinois	1913		Williams St. <sup>[57]</sup>	
Samuel Wilson Residence	S.179.13a	River Forest	USA	Illinois	1913		Williams St. <sup>[57]</sup>	
McClintock Residence	S.179.14a	River Forest	USA	Illinois	1913		Williams St. <sup>[57]</sup>	
R N Fellows Residence	S.179.21a	River Forest	USA	Illinois	1913		Williams St. <sup>[57]</sup>	
A E Olson Residence	S.179.22a	River Forest	USA	Illinois	1913		Williams St. <sup>[57]</sup>	
F R Donahue Residence	S.179.23a	River Forest	USA	Illinois	1913		Williams St. <sup>[57]</sup>	
F W Collins Residence	S.179.31a	River Forest	USA	Illinois	1913		Williams St. <sup>[57]</sup>	
Dr I A Toren Residence	S.179.32a	River Forest	USA	Illinois	1913		Williams St. <sup>[57]</sup>	
W C Gaddis Residence	S.179.41a	River Forest	USA	Illinois	1913		Williams St. <sup>[57]</sup>	
E G Wheeler Residence	S.179.42a	River Forest	USA	Illinois	1913		Williams St. <sup>[57]</sup>	
L E Murphy Residence	S.179.51a	River Forest	USA	Illinois	1913		Williams St. <sup>[57]</sup>	
S R Flett Residence	S.179.52a	River Forest	USA	Illinois	1913		Williams St. <sup>[57]</sup>	
S D Roberts Residence	S.179.61a	River Forest	USA	Illinois	1913		Williams St. <sup>[57]</sup>	
C J LaMena Residence	S.179.62a	River Forest	USA	Illinois	1913		Williams St. <sup>[57]</sup>	
C G Towers Residence	S.179.63a	River Forest	USA	Illinois	1913		Williams St. <sup>[57]</sup>	
Frank Winters Residence	S.179.71a	River Forest	USA	Illinois	1913		Williams St. <sup>[57]</sup>	
J J Willis Residence	S.179.72a	River Forest	USA	Illinois	1913		Williams St. <sup>[57]</sup>	
D H Davis Residence	S.179.73a	River Forest	USA	Illinois	1913		Williams St. <sup>[57]</sup>	



Frank Lloyd Wright  
42 TO 47 YEARS OLD  
(1909 TO 1914)

SOURCE:  
[HTTPS://EN.WIKIPEDIA.ORG/WIKI/LIST OF FRANK LLOYD WRIGHT WORKS](https://en.wikipedia.org/wiki/List_of_Frank_Lloyd_Wright_works)





<b>Residence</b>	S.179.71a	River Forest	USA	Illinois	1913		Williams St. <sup>[57]</sup>	
<b>J J Willis Residence</b>	S.179.72a	River Forest	USA	Illinois	1913		Williams St. <sup>[57]</sup>	
<b>D H Davis Residence</b>	S.179.73a	River Forest	USA	Illinois	1913		Williams St. <sup>[57]</sup>	
<b>Roy Iverson Residence</b>	S.179.81a	River Forest	USA	Illinois	1913		Williams St. <sup>[57]</sup>	
<b>W H Gordon Residence</b>	S.179.82a	River Forest	USA	Illinois	1913		Williams St. <sup>[57]</sup>	
<b>P W Hazelton Residence</b>	S.179.91a	River Forest	USA	Illinois	1913		Williams St. <sup>[57]</sup>	
<b>W C Rohray Residence</b>	S.179.92a	River Forest	USA	Illinois	1913		Williams St. <sup>[57]</sup>	
<b>F J Hinckley Residence</b>	S.179.93a	River Forest	USA	Illinois	1913		Williams St. <sup>[57]</sup>	
<b>C J Burras Residence</b>	S.179.XOa	River Forest	USA	Illinois	1913		Williams St. <sup>[57]</sup>	
<b>Clark H Sherman Residence</b>	S.179.24a	River Forest	USA	Illinois	1913		Clinton St. <sup>[57]</sup>	
<b>Harry Hogan model house</b>	S.179.43a	River Forest	USA	Illinois	1913		Clinton St. <sup>[57]</sup>	
<b>Midway Gardens</b>	S.180	Chicago	USA	Illinois	1913		Demolished 1929	
<b>Taliesin II</b>	S.182	Spring Green	USA	Wisconsin	1914		Partially destroyed by fire 1925	
<b>Mori Oriental Art Studio</b>	S.181	Chicago	USA	Illinois	1914			
<b>Women's Building at Inter-County Fairgrounds</b>	S.167	Spring Green	USA	Wisconsin	1914		Demolished 1924	
<b>American System-Built Homes</b>		Various Locations	USA		1914–1915			



Frank Lloyd Wright  
42 TO 47 YEARS OLD  
(1909 TO 1914)

SOURCE:  
[HTTPS://EN.WIKIPEDIA.ORG/WIKI/LIST OF FRANK LLOYD WRIGHT WORKS](https://en.wikipedia.org/wiki/List_of_Frank_Lloyd_Wright_works)



47 YEARS OLD (1914)

# MISTRESS MURDERED, AND TALIESIN BURNED

MAGAZINE SECTION **THE OGDEN STANDARD** MAGAZINE SECTION

OGDEN CITY, UTAH, SATURDAY, SEPTEMBER 5, 1914

## THE TERRIBLE FATE OF MAMAH BORTHWICK IN HER BUNGALOW OF LOVE

Woman, Who With  
Frank Lloyd Wright,  
Dared Live Con-  
trary to Accepted  
Rules of Conduct,  
Meets Disaster  
in a Few  
Short Years





Ages  
42 (1909)  
to  
47 (1914)



Watch  
Wunderlich  
[Vlog Lecture](#)  
Time 1:00:45 to 1:06:37  
on  
[YouTube Channel](#)

