

# THE LIFE AND WORK OF FRANK LLOYD WRIGHT

PART 2:  
Ages 20 to 33 (1887-1900)  
In Chicago



JT Wunderlich PhD

website: <http://users.etown.edu/w/wunderjt/> [Architecture Portfolio](#)

8/28/2018



## **PART 1: Frank Lloyd Wright Age 0-19 (1867-1886)** [PDF](#) [PPTX-w/audio](#) [MP4](#) [YouTube](#)

*Context:* Post Civil War recession. Industrial Revolution. Farm life. Preacher/Musician-Father, Teacher-Mother. Mother's large influential Unitarian family of Welsh farmers. Nature. Parent's divorce.

*Architecture:* Froebel schooling (e.g., blocks). Barns/farm-houses ([PDF](#) [PPTX-w/audio](#) [MP4](#) [YouTube](#)). Organic Architecture roots.

## **PART 2: Frank Lloyd Wright Age 20-33 (1887-1900)** [PDF](#) [PPTX-w/audio](#) [MP4](#) [YouTube](#). **THIS LECTURE**

*Context:* Rebuilding Chicago after the Great Fire. Wife Catherine and first five children.

*Architecture:* Architects Joseph Silsbee and Louis Sullivan. Oak Park. Home & Studio. "Organic Architecture" begins.

## **PART 3: Frank Lloyd Wright Age 34-41 (1901-1908)** [PDF](#) [PPTX-w/audio](#) [MP4](#) [YouTube](#)

*Context:* First Japan trip ([PDF](#) [PPTX-w/audio](#) [MP4](#) [YouTube](#)). Arts & Crafts movements. Six children.

*Architecture:* Prairie Style. Oak Park & River Forest, Unity Temple, Robie House, Larkin Building.

## **PART 4: Frank Lloyd Wright Age 42-47 (1909-1914)** [PDF](#) [PPTX-w/audio](#) [MP4](#) [YouTube](#)

*Context:* Secession movement. Lived in Italy ([Page](#) [MP4](#) [YouTube](#)). Built Taliesin on family farmland. Mistress murdered.

*Architecture:* Wasmuth Portfolio published(Germany). Taliesin. Many operable windows for health & passive cooling. Sculptures.

## **PART 5: Frank Lloyd Wright Age 48-62 (1915-1929)** [PDF](#) [PPTX-w/audio](#) [MP4](#) [YouTube](#)

*Context:* WWI, Roaring 20's. Short 2<sup>nd</sup> marriage. Lives 3 yrs in Japan, then California and Wisconsin. 3<sup>rd</sup> marriage (Olga).


*Architecture:* Tokyo Imperial Hotel. Textile Houses in California (with Mayan influences).

## **PART 6: Frank Lloyd Wright Age 63-78 (1930-1945)** [PDF](#) [PPTX-w/audio](#) [MP4](#) [YouTube](#)

*Context:* 1930's Great Depression. WWII. Taliesin Fellowship/school. Utopian-Ideals(communal-living) Winters in AZ.

*Architecture:* Broadacre City, Fallingwater, Johnson Wax Building, Taliesin-West, Hanna-Honecomb House, Usonian Homes.

## **PART 7: Frank Lloyd Wright Age 79-91 (1946-1958++)** [PDF](#) [MP4](#) [PPTX-w/audio](#) [YouTube](#)

*Context:* Post-WWII boom. Cold War. Communal living at Taliesin. FLW dies in 1959. Fellowship/school continued at Taliesin & Taliesin-West by Olga for 27 years -- and still exists today with some very recent changes. 

*Architecture:* Price Tower, Churches/Synagogue/Auditoriums. The Guggenheim. AZ homes, Modern materials.

Allan, Edward and Iana, Joseph. *Fundamentals of Building Construction: Materials and Methods*. Wiley; 7th edition (October 15, 2019).

American Institute of Architects. *AIA Guide to Chicago*. 2014.

Burns, Ken, and Novick, Lynn. *Frank Lloyd Wright: A Film by Ken Burns and Lynn Novick DVD*. PBS Home Video, August 28, 2001.

Bacon, Edmond. *Design of Cities*. Thames & Hudson Ltd, 1978.

Ching, Francis D.K. *Architecture: Form, Space, and Order*. 4 ed., Wiley, 2014.

Curtis, Stanley James. Friedrich Froebel; German educator. *Encyclopedia Britannica*, 2018. <https://www.britannica.com/biography/Friedrich-Froebel>

Fazio, M., Moffett, M., and Wodehouse, L. *Buildings Across Time: An introduction to world architecture*. 4<sup>th</sup> edition, McGraw-Hill, 2012.

Fici, Filipo. Frank Lloyd Wright in Florence and Fiosole. *Frank Lloyd Wright Quarterly*, Vol. 22 no.4, 2011.

*Find a grave; William Carey Wright*, 2018. <https://www.findagrave.com/memorial/55462361/william-carey-wright>

Frank Lloyd Wright Trust. *1905: Japan through the Lens of Frank Lloyd Wright*, 2017. <https://www.wrightsjapan1905.org/>

Frank Lloyd Wright Trust. *Unity Temple*, 2018. <https://flwright.org/researchexplore/unitytemple>

*Froebel; Brief History of the Kindergarten*. Froebel Gifts, 2013. <http://www.froebelgifts.com/history.htm>

*Ho-o-Den, An Illustrated Description of the Buildings Erected by the Japanese Government at the World's Columbian Exposition*. K. Ogawa publisher, Tokyo, 2018.

Hoffman, Anna. *Gustav Stickley: the American Arts & Crafts Movement*. Sept 16, 2010.

Huxtable, Ada Louise. *Frank Lloyd Wright*. New York Times, Oct. 31, 2004. <https://www.nytimes.com/2004/10/31/books/chapters/frank-lloyd-wright.html>

Kaufman, Clare. *The History of Higher Education in the United States*. WoroldWideLearn. 2018. <https://www.worldwidellearn.com/education-advisor/indepth/history-higher-education.php>

Kitagawa, Joseph Mitsuo. *On Understanding Japanese Religion*. Princeton University Press, 1987.

Lechner, Norbert. *Heating, cooling, lighting*. Wiley, 4<sup>th</sup> edition, October 13, 2014.

*LEED (Leadership in Energy and Environmental Design)*, The United States Green Building Council, 2018. <https://new.usgbc.org/leed>

Life of Olgivanna Lloyd Wright Reviewed by Architects and Artisans. *ORO Editions*. Sep 12, 2017. <https://www.oroeditions.com/2017/09/12/the-life-of-olgivanna-lloyd-wright-reviewed-by-architects-and-artisans/>

Lynch, Kevin. *The Image of The City*. MIT Press, 1960.

*PENN Rare Book and Manuscript: Frank Lloyd Wright's Paternal Family*. Penn Library. University of Pennsylvania, Feb. 20, 2014. <http://www.library.upenn.edu/rbm/featured/mscoll822.html>

Pearson, David. *The Breaking Wave: New Organic Architecture*. Stroud: Gaia, 2001.

Siry, Joseph M. *The Architecture of Earthquake Resistance*. *Journal of the Society of Architectural Historians*, Vol 67 (1): pp78–105, 2008.

Storrer, William Allin. *The Architecture of Frank Lloyd Wright, a Complete Catalog, 4<sup>th</sup> edition*. Chicago, University of Chicago Press, 2017.

Stevens, John L. *Incidence of travel in Yucatán*. Sastrugi Press, 2019.

Stevens, John L. *Incidence of travel in Central America, Chiapas, and Yucatán*. Dover Publications, 1969.

*Unity Chapel*, Unity Chapel Inc. 2018. <http://www.unitychapel.org/familyhistory/>

Vargas, A.P. and Schierle, G.G., The textile block system: seismic analysis and upgrading, *WIT Transactions on State of the Art in Science and Engineering*, Vol 62 WIT Press 2013.

Kim, Daeshick, and Back, Alan. *The Way to go: philosophy in martial arts practice*. Nanam Publishing House, 2000.

Wright, Frank Lloyd. *The Art and Craft of the Machine*, Vol. 8, No. 2 pp. 77-81, 83-85, 87-90, May, 1901. [tps://www.jstor.org/stable/pdf/25505640.pdf](https://www.jstor.org/stable/pdf/25505640.pdf)

Wright, Frank Lloyd. In the Cause of Architecture. *Architectural Record*, vol. XXIII, March 1908.

Wright, Frank Lloyd. *(1911 Wasmuth Portfolio) in Drawings and Plans of Frank Lloyd Wright: The Early Period (1893-1909)*. Dover Architecture 1983.

Wright, Frank Lloyd. *The Japanese Print, an Interpretation*. The Ralph Fletcher Seymour co., Chicago, 1912.

Wright, Frank Lloyd. In the Cause of Architecture; *Second Paper*. *Architectural Record*, May 1914.

Wright, Frank Lloyd. *The Natural House*. New York, Penguin Books, 1954.

Wright, Frank Lloyd. *Testament*. New York, Bramhall House, 1957.

Zerbey, Nancy. New England Architecture | Guide to House Styles in New England. *New England Today Living*, May 9, 2018. <https://newengland.com/today/living/homes/new-england-architecture/>



# AGES 20 TO 33 (1887-1900)

- First, a quick review of PART 1, up to Age 19 . . .

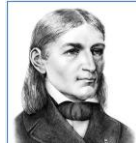




# RECALL FRANK LLOYD WRIGHT'S EARLIEST INFLUENCES (UNTIL AGE 19)

[FROEBEL 2013, PENN RARE BOOK 2014, HUXTABLE 2004, STORRER 2017, WRIGHT 1957, BURNS 2001]

- **FROEBEL** influenced by Taoism and Buddhism
  - Japanese Shinto rooted in Chinese Taoism
    - Shinto Gods in everything, especially **nature**
    - FLW would later love Japanese Art, Design, and Culture
- Mother's family were all **UNITARIANS**
  - Inspiration from all religions, love **nature**, God in everything



Friedrich Froebel  
1782-1852 Germany



Maria Montessori  
1913 in Italy



**FATHER**

Preacher, Lawyer, School Superintendent, Teacher, Musician  
B.A., M.A. Colgate University  
*"Artist, photographer, and designer of furniture, graphics, books, and buildings, his patronage of Chinese and Japanese art, his obsession with every aspect of his surroundings, his dedicated collecting of beautiful things, owed much to his father"* [Huxtable 2004]



**MOTHER**

Homeschool Teacher  
using Froebel System

Others in history homeschooled:  
Leonardo da Vinci, Monet, Mozart, Bach,  
Newton, Ben Franklin, Edison, Jefferson,  
Washington, Einstein, Teddy and  
Franklin-Delano Roosevelt, Churchill,  
John Muir, and the Wright brothers



Most of childhood in rural **WISCONSIN**

- Like Pennsylvania farmland



Frank Lloyd Wright 1867-1959



Future  
Designers

# Recall INFLUENCES → His resulting “PRINCIPLES,” up to Age 19

## PLACES

- Mostly Wisconsin
- New England



Farms

## PEOPLE

- Father Preacher / Musician
- Mother Teacher, large family of Unitarian farmers
- Architects:



## EVENTS

- Post-Civil War
- Industrial Revolution
- Parents Divorce

Allan Conover  
A&E Professor



Science Hall

Joseph Silsbee



Unity Chapel



## RESULTING PRINCIPLES

- Architecture = Music; Wood block geometries
- His later “Organic Architecture”: From Unitarians: Love of nature; Conover’s Science Hall: Innovative materials, Less ornamentation, Build into hillsides, Open interiors, Materials in natural state, Interior space defines exterior; And cramped entry for drama at destination = “Compression/Embrace & Release”



# 20 YEARS OLD

[WRIGHT 1957]

Frank Lloyd Wright



## Moved to Chicago

- *“A visit to pawn broker ... My Father’s books ... , and the mink cape collar my mother had sewed to my overcoat, financed the enterprise”*



1887 CHICAGO

[HTTPS://IMGUR.COM/GALLERY/2UCBF](https://imgur.com/gallery/2UCBF)





# 20 YEARS OLD

[WRIGHT 1957, BURNS 2001, STORRER 2017]

Frank Lloyd Wright



## Moved to Chicago

- City-wide fire in 1871 created many opportunities for architects
- Initially worked for Architect Joseph Silsbee



1887 CHICAGO

[HTTPS://IMGUR.COM/GALLERY/2UCBF](https://imgur.com/gallery/2UCBF)



# 20 YEARS OLD (1887)

[STORRER 2017]

## HILLSIDE HOME SCHOOL (1886/87), Wisconsin

- “Shingle Style”
- Apprenticing with **Joseph Silsbee**, well known for this style
- Aunt's were teachers here
  - **Progressive private school**; one of first coed boarding schools



Frank Lloyd Wright



**Architect**  
**Joseph Silsbee**  
(a friend of the family)



# 21 & 22 YEARS OLD (1888,89)

[WRIGHT 1957]

At age 21, approached **most famous architect in Chicago, Louis Sullivan**

*“I was accepted by Mr. Sullivan and went to work for **Adler and Sullivan**, then the only moderns in architecture, and with whom, for that reason, I wanted to work.”*



Frank Lloyd Wright



Architect Louis Sullivan



# 22 YEARS OLD (1889)

[STORRER 2017]

**Louis Sullivan's** was mostly a **Commercial** (Non-residential) Architect that designed some of the first high-rises



Frank Lloyd Wright (**FLW**)



Architect Louis Sullivan



Auditorium Building  
Chicago, 1889, Adler and Sullivan



Architect Louis Sullivan





Wainwright Building,  
St Louis, 1891, Adler and Sullivan



Architect Louis Sullivan



705 Olive building, St Louis,  
1893, Adler and Sullivan



Architect Louis Sullivan







The Guaranty Building (now the Prudential Building)  
Buffalo, New York, 1895, Adler and Sullivan



Architect Louis Sullivan

# 22 YEARS OLD (1889)

[STORRER 2017]

**Frank Lloyd Wright** originally worked on ornamentation on large commercial buildings (High Rises), but soon **worked mostly on Residential** projects



Frank Lloyd Wright (**FLW**)



Architect Louis Sullivan



# 21 & 22 YEARS OLD (1888,89)

[BURNS 2001, STORRER 2017]

- Rose to chief draftsman **in charge of 49 others**
- Referred to Louis Sullivan as **Liebermeister** (“**Dear Master**”)
- Given **five year contract**
- At age 22, asked **Louis Sullivan** for **personal loan** against contract to build a house for himself and his bride Catherine



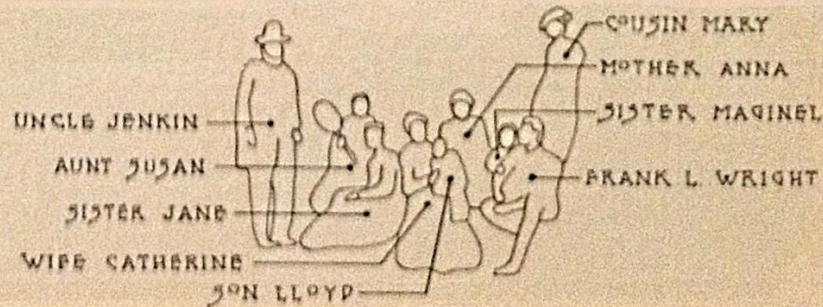
Frank Lloyd Wright and **wife Catherine Tobin** who he met at a church social at age 21 when she was age 17



Architect Louis Sullivan

# 23 YEARS OLD (1890)

Their first baby, Lloyd, is born; The first of 6 children over the next 13 years





## 23 YEARS OLD (1890)

Their first baby, Lloyd, is born; The first of 6 children over the next 13 years



# ~23 YEARS OLD (~1890)

[STORRER 2017]

- Put in charge of **Residential** projects of the Adler and Sullivan firm
- Partly to help pay back the private loan from Louis Sullivan



Frank Lloyd Wright



Architect Louis Sullivan

# 26 YEARS OLD (1893)

[WRIGHT 1967]

- Neither FLW or Louis Sullivan **liked Neoclassicism** (Greek or Roman)
- Both annoyed by “White City” built for 1893 Worlds Fair in Chicago
- FLW, when criticizing Neoclassicism, quoted French poet Victor Hugo:  
***“The setting Sun all mistook for Dawn”***
- **Both Architects in search of an entirely new American Architecture**



Frank Lloyd Wright



“White City” built for 1893 Worlds Fair in Chicago



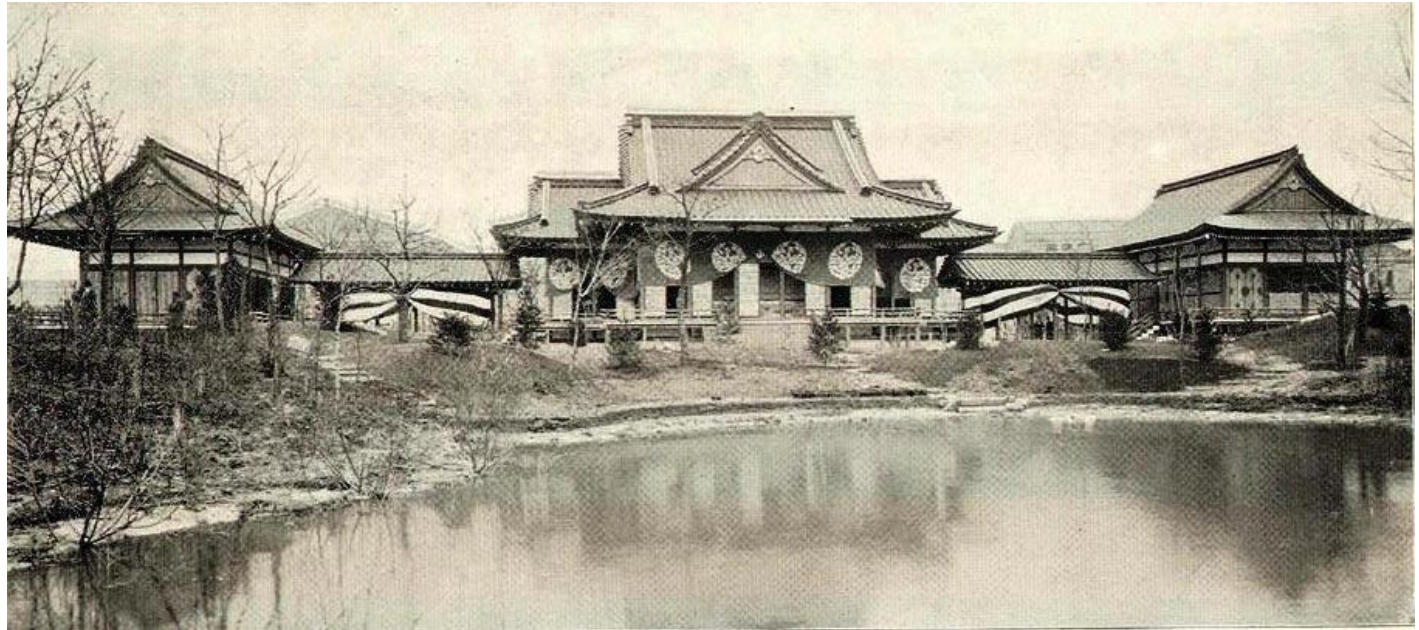
Architect Louis Sullivan



# 26 YEARS OLD (1893)

[HO-O-DEN 2018]

- He did however like the **Japanese Pavilion at the 1893 Worlds Fair in Chicago**
  - Replica of Ho-O-Den Phoenix Hall in Japan
- He was also very interested in **Japanese wood-block prints**
  - And later, he would collect Japanese Screens, Kimonos, Ceramics, and textiles
    - And in 1910 published a book "*The Japanese Print*"



Japanese Pavilion (Phoenix Hall replica) at 1893 Worlds Fair in Chicago



Frank Lloyd Wright





# 26 YEARS OLD (1893)

[HO-O-DEN 2018]



Actual Phoenix Hall in Kyoto Japan, 2018



Frank Lloyd Wright



# 26 YEARS OLD (1893)

[HO-O-DEN 2018]



Japanese Pavilion (Phoenix Hall replica) at 1893 Worlds Fair in Chicago



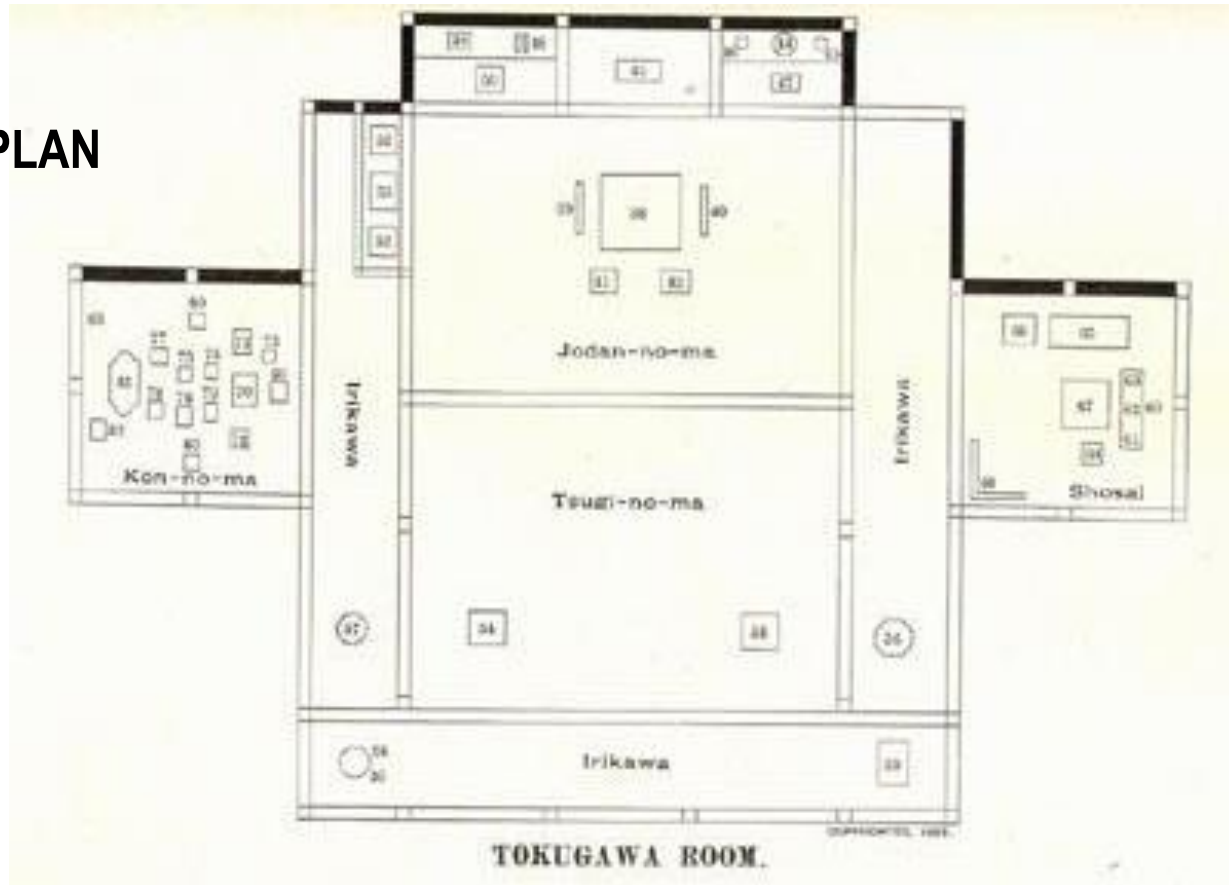
Frank Lloyd Wright



# 26 YEARS OLD (1893)

[HO-O-DEN 2018]

## OPEN FLOOR PLAN



Frank Lloyd Wright

Japanese Pavilion (Phoenix Hall replica) at 1893 Worlds Fair in Chicago





# 26 YEARS OLD (1893)

[HO-O-DEN 2018]

**SCREEN**



Japanese Pavilion (Phoenix Hall replica) at 1893 Worlds Fair in Chicago



Frank Lloyd Wright



# 26 YEARS OLD (1893)

[HO-O-DEN 2018]



Japanese Pavilion (Phoenix Hall replica) at 1893 Worlds Fair in Chicago



Frank Lloyd Wright



# HIS 20'S IN CHICAGO (LATE 1800'S)



Frank Lloyd Wright and wife Catherine

## His House

Front façade has **strong triangular high-gable roof**

- SIMPLE GEOMETRIES influenced by wood blocks of his youth



Wunderlich  
Vlog Lecture  
on  
YouTube Channel

2019 study of 31 Frank Lloyd Wright sites, plus two FLW influenced family homes

98 views · Jul 10, 2019

👍 2 🗨️ 0 ➦ SHARE 📌 SAVE ...



Joseph Wunderlich  
8 subscribers

SUBSCRIBE



# HIS 20'S IN CHICAGO (LATE 1800'S)

## His House (Entry)



Frank Lloyd Wright and wife Catherine



2019 study of 31 Frank Lloyd Wright sites, plus two FLW influenced family homes

98 views • Jul 10, 2019

👍 2 👎 0 🔄 SHARE 📌 SAVE ...

 Joseph Wunderlich  
8 subscribers

SUBSCRIBE



# HIS 20'S IN CHICAGO (LATE 1800'S)



Frank Lloyd Wright and wife Catherine

## His House

- Entry Foyer, and main stairs to 2<sup>nd</sup> floor



2019 study of 31 Frank Lloyd Wright sites, plus two FLW influenced family homes

98 views • Jul 10, 2019

👍 2 🗨️ 0 ➦ SHARE 📌 SAVE ...

 Joseph Wunderlich  
8 subscribers

SUBSCRIBE



# HIS 20'S IN CHICAGO (LATE 1800'S)

## His House

- Fireplace/hearth centrally-located -- near entry
- SIMPLE GEOMETRIES influenced by wood blocks of his youth



Frank Lloyd Wright and wife Catherine



2019 study of 31 Frank Lloyd Wright sites, plus two FLW influenced family homes





# HIS 20'S IN CHICAGO (LATE 1800'S)

## His House (Living Room)

- Octagons of Bay windows **"BREAK UP THE BOX"**
- BANDING OF WINDOWS



Frank Lloyd Wright and wife Catherine



2019 study of 31 Frank Lloyd Wright sites, plus two FLW influenced family homes

98 views · Jul 10, 2019

👍 2 🗨️ 0 ➦ SHARE 📌 SAVE ...

 Joseph Wunderlich  
8 subscribers

SUBSCRIBE

Wunderlich  
Vlog Lecture  
on  
YouTube Channel



# HIS 20'S IN CHICAGO (LATE 1800'S)

## His House (Dining Room)

- Octagons of Bay windows **"BREAK UP THE BOX"**
- BANDING OF WINDOWS



Frank Lloyd Wright and wife Catherine



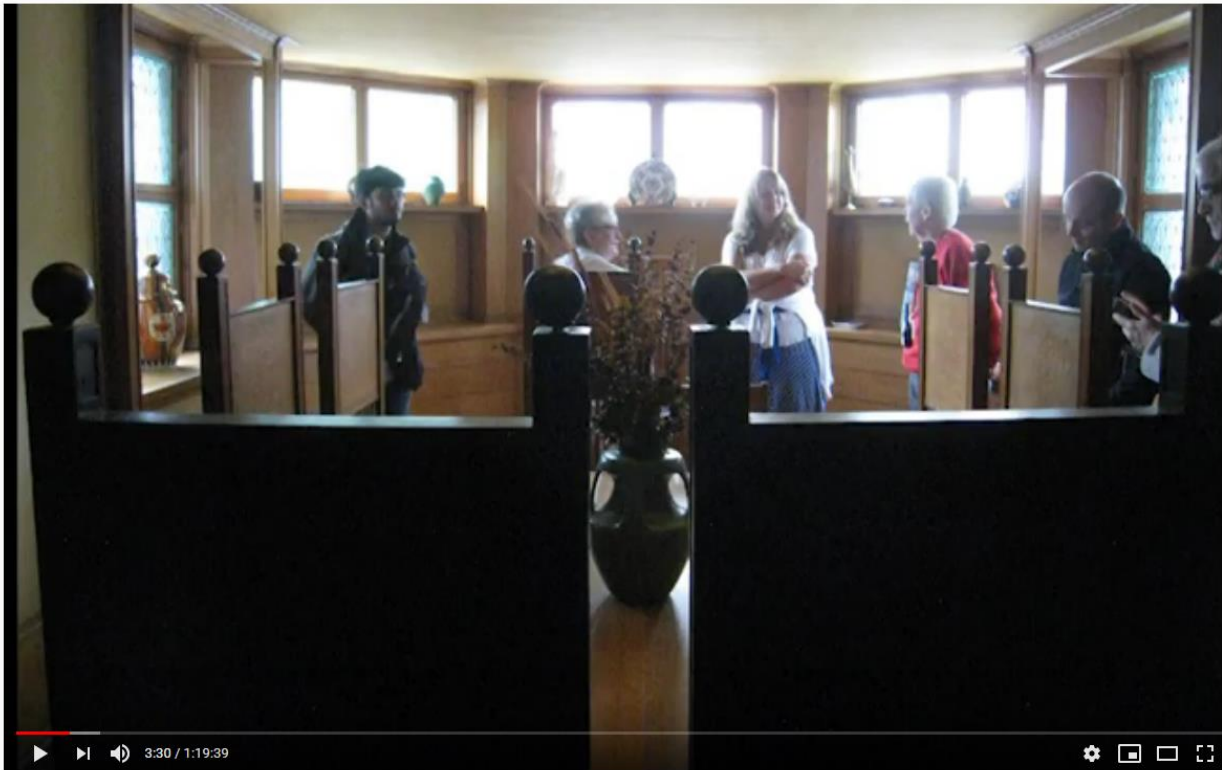
# HIS 20'S IN CHICAGO (LATE 1800'S)

## His House (Dining Room)

- Octagons of Bay windows **"BREAK UP THE BOX"**
- BANDING OF WINDOWS



Frank Lloyd Wright and wife Catherine



2019 study of 31 Frank Lloyd Wright sites, plus two FLW influenced family homes

96 views · Jul 10, 2019

👍 2 🗨️ 0 ➦ SHARE 📌 SAVE ...



Joseph Wunderlich  
8 subscribers

SUBSCRIBE

Wunderlich  
Vlog Lecture  
on  
YouTube Channel





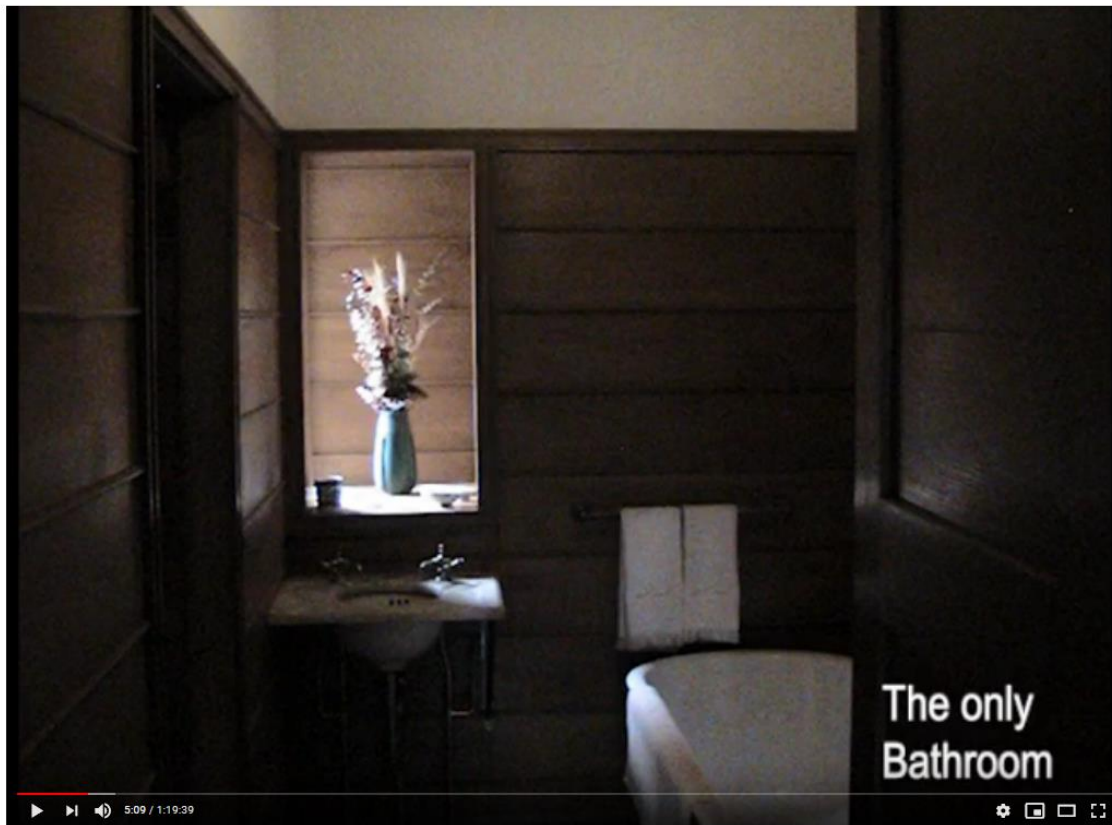
# HIS 20'S IN CHICAGO (LATE 1800'S)

**His House** (*only bathroom for everybody, including 6 children*)

- South-facing window in alcove (for privacy) provides light



Frank Lloyd Wright and wife Catherine



2019 study of 31 Frank Lloyd Wright sites, plus two FLW influenced family homes

98 views · Jul 10, 2019

👍 2 🗨️ 0 ➦ SHARE 📌 SAVE ...



Joseph Wunderlich  
8 subscribers

SUBSCRIBE

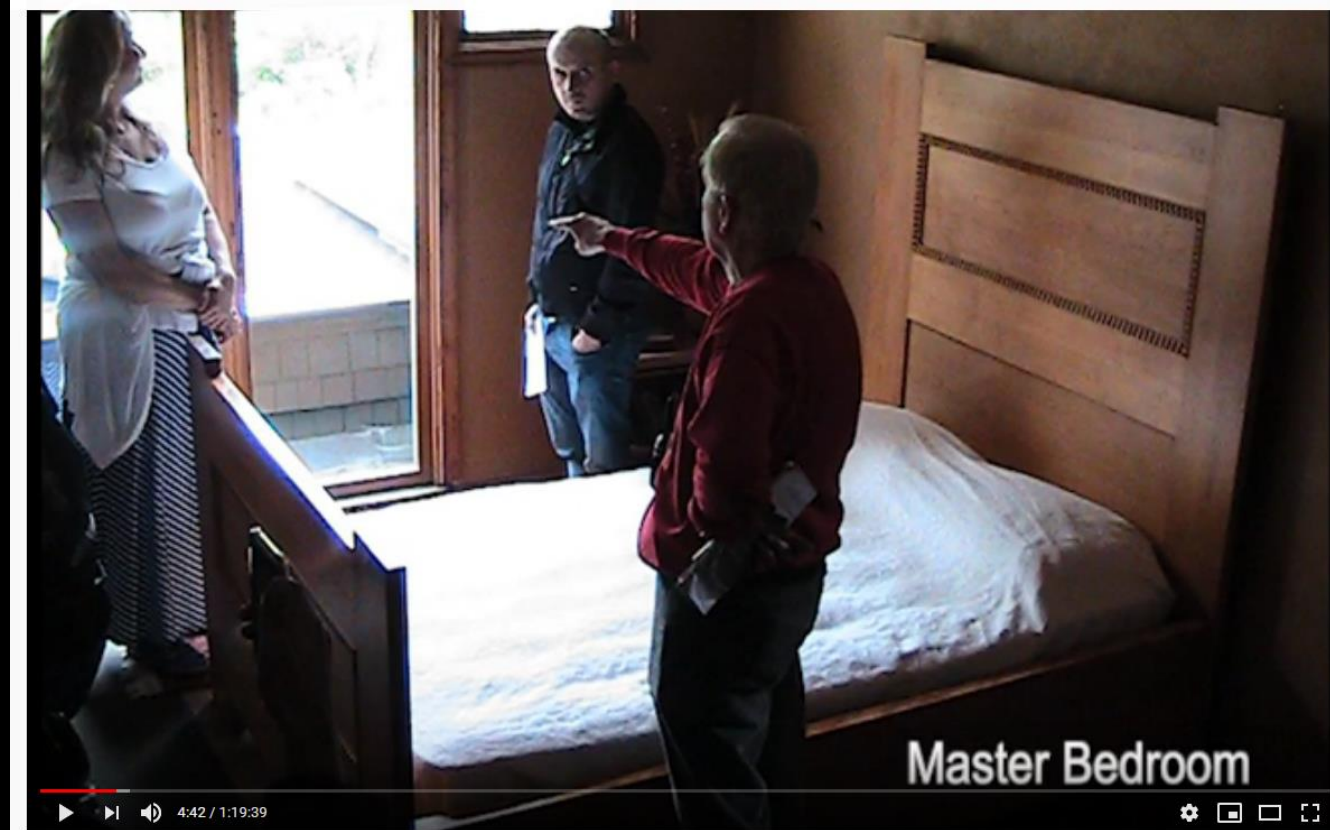


# HIS 20'S IN CHICAGO (LATE 1800'S)



Frank Lloyd Wright and wife Catherine

## His House (Master bedroom)



2019 study of 31 Frank Lloyd Wright sites, plus two FLW influenced family homes

96 views • Jul 10, 2019

👍 2    💬 0    ➦ SHARE    📌 SAVE    ...



Joseph Wunderlich  
8 subscribers

SUBSCRIBE

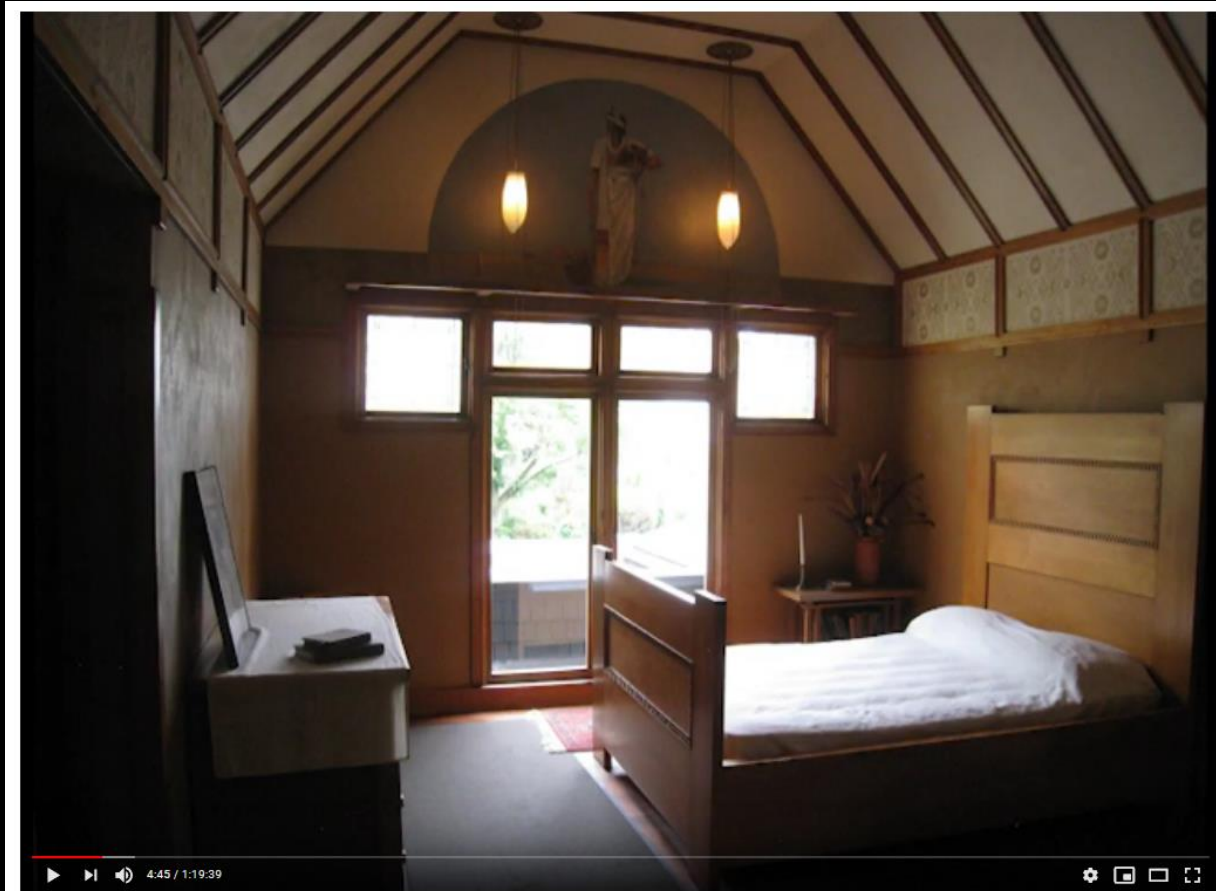


# HIS 20'S IN CHICAGO (LATE 1800'S)



Frank Lloyd Wright and wife Catherine

## His House (Master bedroom)



2019 study of 31 Frank Lloyd Wright sites, plus two FLW influenced family homes

98 views · Jul 10, 2019

👍 2 🗨️ 0 ➦ SHARE 📌 SAVE ...

 Joseph Wunderlich  
8 subscribers

SUBSCRIBE

Wunderlich  
Vlog Lecture  
on  
YouTube Channel





# HIS 20'S IN CHICAGO (LATE 1800'S)



Frank Lloyd Wright and wife Catherine

## His House (Nursery & Sewing room)

Nursery and Sewing Room

A photograph of a nursery and sewing room, viewed through a doorway. The room features a wooden rocking chair, a table, and a window. The text "Nursery and Sewing Room" is overlaid in the top left corner of the image.

2019 study of 31 Frank Lloyd Wright sites, plus two FLW influenced family homes

98 views · Jul 10, 2019

Joseph Wunderlich  
8 subscribers

2 0 SHARE SAVE ...

SUBSCRIBE

Wunderlich  
Vlog Lecture  
on  
YouTube Channel



# HIS 20'S IN CHICAGO (LATE 1800'S)



Frank Lloyd Wright and wife Catherine

## His House (Children's bedroom)

- Created from original studio space
- **Partition** in the middle; boys on one side, girls on the other – partitions common in **Japan**



# HIS 20'S IN CHICAGO (LATE 1800'S)



Frank Lloyd Wright and wife Catherine

**His House** (Studio addition, for himself and his employees)



2019 study of 31 Frank Lloyd Wright sites, plus two FLW influenced family homes

98 views · Jul 10, 2019

2 0 SHARE SAVE ...

Joseph Wunderlich  
8 subscribers

SUBSCRIBE

Wunderlich  
Vlog Lecture  
on  
YouTube Channel





# HIS 20'S IN CHICAGO (LATE 1800'S)



Frank Lloyd Wright and wife Catherine

## His House (Studio addition)



2019 study of 31 Frank Lloyd Wright sites, plus two FLW influenced family homes

98 views · Jul 10, 2019

👍 2 🗨️ 0 ➦ SHARE ⚙️ SAVE ...



Joseph Wunderlich  
8 subscribers

SUBSCRIBE



# HIS 20'S IN CHICAGO (LATE 1800'S)



Frank Lloyd Wright and wife Catherine

## His House (Studio addition)



2019 study of 31 Frank Lloyd Wright sites, plus two FLW influenced family homes

98 views · Jul 10, 2019

👍 2 🗨️ 0 ➦ SHARE ⚙️ SAVE ...

 Joseph Wunderlich  
8 subscribers

SUBSCRIBE



# HIS 20'S IN CHICAGO (LATE 1800'S)



## His House (Studio addition)

Frank Lloyd Wright and wife Catherine



2019 study of 31 Frank Lloyd Wright sites, plus two FLW influenced family homes

98 views · Jul 10, 2019

👍 2 🗨️ 0 ➦ SHARE ⚙️ SAVE ...



Joseph Wunderlich  
8 subscribers

SUBSCRIBE



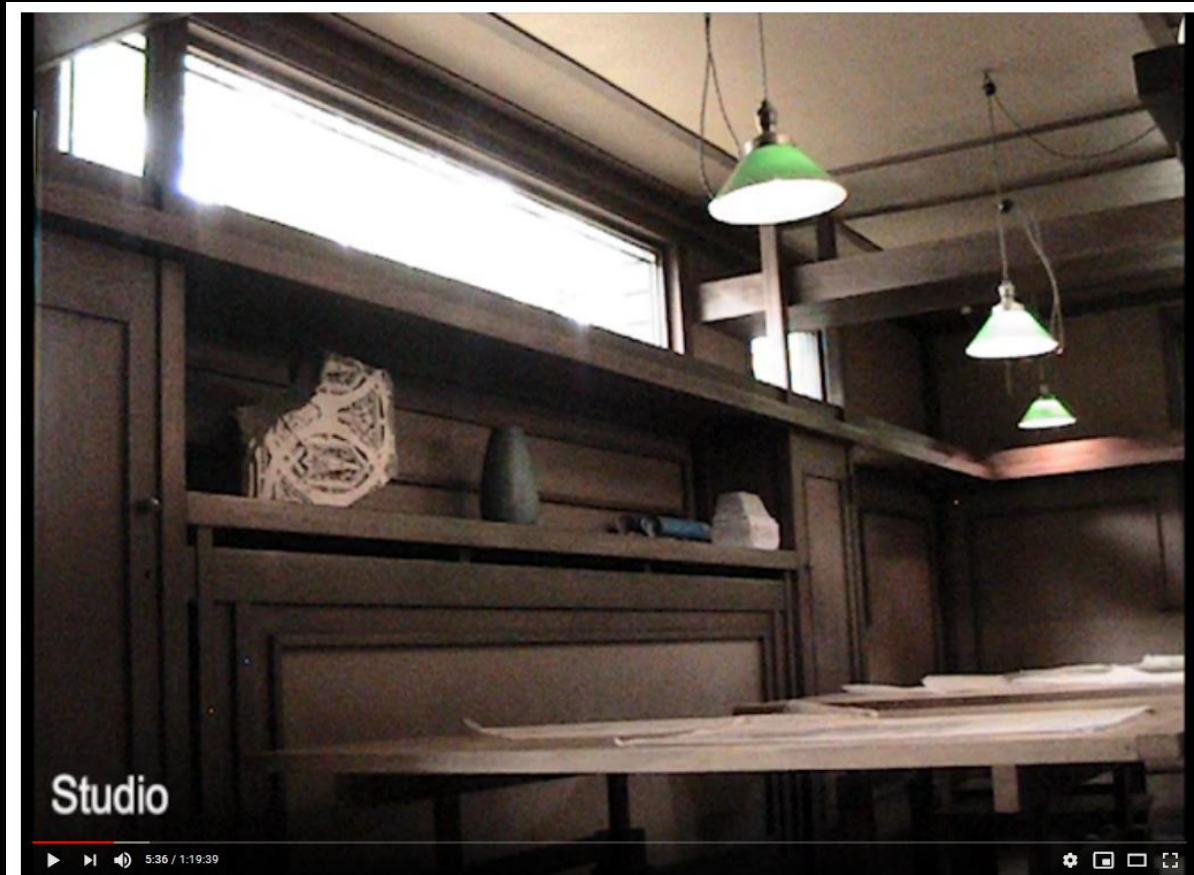


# HIS 20'S IN CHICAGO (LATE 1800'S)



Frank Lloyd Wright and wife Catherine

## His House (Studio addition)



2019 study of 31 Frank Lloyd Wright sites, plus two FLW influenced family homes

98 views · Jul 10, 2019

👍 2 🗑️ 0 ➦ SHARE 📌 SAVE ⋮



Joseph Wunderlich  
8 subscribers

SUBSCRIBE



# HIS 20'S IN CHICAGO (LATE 1800'S)



Frank Lloyd Wright and wife Catherine


## His House (Studio addition)



2019 study of 31 Frank Lloyd Wright sites, plus two FLW influenced family homes

98 views · Jul 10, 2019

👍 2 🗨️ 0 ➦ SHARE 📌 SAVE ...

 Joseph Wunderlich  
8 subscribers

SUBSCRIBE



# HIS 20'S IN CHICAGO (LATE 1800'S)



Frank Lloyd Wright and wife Catherine

## His House (Studio addition)

*"... – now mark my word –  
We'll build the perfect ship"*

By Rudyard Kipling



2019 study of 31 Frank Lloyd Wright sites, plus two FLW influenced family homes

96 views · Jul 10, 2019



Joseph Wunderlich  
8 subscribers

2 likes · 0 comments

SHARE





# HIS 20'S IN CHICAGO (LATE 1800'S)



Frank Lloyd Wright and wife Catherine

## His House (Playroom addition) -- balcony

A YouTube video player showing a lecture in a wood-paneled room. The room features a balcony with a railing and a statue of a figure on the wall. A man in a red shirt is gesturing with his right hand raised. Other people are visible in the background, including a woman in a blue jacket and a man in a white hoodie. The video player interface includes a play button, a progress bar showing 4:06 / 1:19:39, and various control icons. Below the video, the title "2019 study of 31 Frank Lloyd Wright sites, plus two FLW influenced family homes" is displayed, along with "98 views · Jul 10, 2019". The channel name "Joseph Wunderlich" and "8 subscribers" are shown, along with a "SUBSCRIBE" button.

Wunderlich  
Vlog Lecture  
on  
YouTube Channel

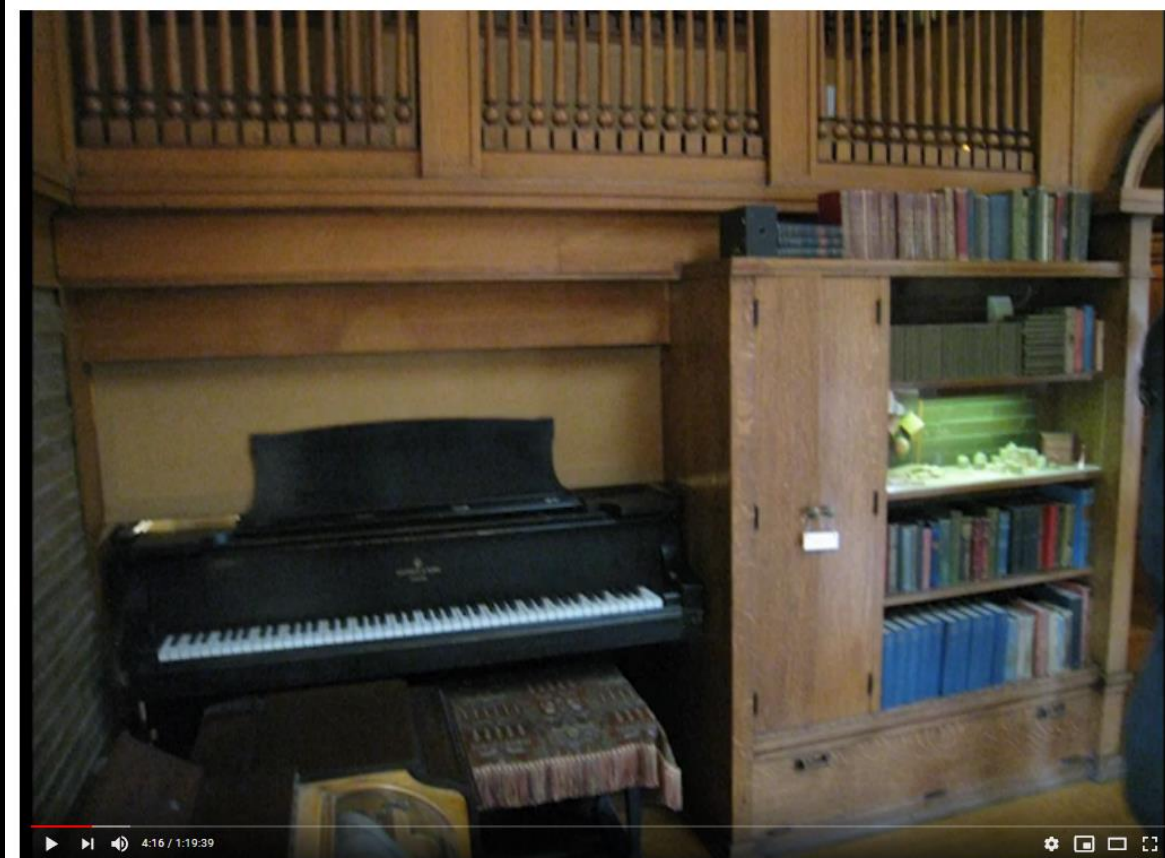


# HIS 20'S IN CHICAGO (LATE 1800'S)



Frank Lloyd Wright and wife Catherine

**His House (Playroom addition) – piano built into wall**



2019 study of 31 Frank Lloyd Wright sites, plus two FLW influenced family homes

98 views · Jul 10, 2019

👍 2 🗨️ 0 ➦ SHARE 📌 SAVE ...



Joseph Wunderlich  
8 subscribers

SUBSCRIBE



# HIS 20'S IN CHICAGO (LATE 1800'S)

**His House** (Playroom addition) – piano built into wall over back stairs

- Music flows through house !



Frank Lloyd Wright and wife Catherine

A Grand piano is inside the wall of the Playroom

2019 study of 31 Frank Lloyd Wright sites, plus two FLW influenced family homes

98 views · Jul 10, 2019

Joseph Wunderlich  
8 subscribers

SUBSCRIBE

The image shows a YouTube video player. The video content is a close-up of a grand piano's internal mechanism, which is built into a wall. The piano is illuminated by a bright blue light. The video player interface includes a play button, a progress bar showing 4:22 / 1:19:39, and various control icons. Below the video, there is a title, view count, date, and a channel name 'Joseph Wunderlich' with 8 subscribers. A red 'SUBSCRIBE' button is visible in the bottom right corner of the video player area.





# HIS 20'S IN CHICAGO (LATE 1800'S)



Frank Lloyd Wright and wife Catherine

## His House (Playroom addition)

- SIMPLE GEOMETRIES influenced by wood blocks of his youth



2019 study of 31 Frank Lloyd Wright sites, plus two FLW influenced family homes

98 views · Jul 10, 2019

2 likes 0 comments SHARE SAVE ...

Joseph Wunderlich  
8 subscribers

SUBSCRIBE

# HIS 20'S IN CHICAGO (LATE 1800'S)



Frank Lloyd Wright and wife Catherine

## His House (Playroom addition) – FROEBEL BLOCKS !

2019 study of 31 Frank Lloyd Wright sites, plus two FLW influenced family homes

98 views · Jul 10, 2019

Joseph Wunderlich  
8 subscribers

SUBSCRIBE

4:24 / 1:19:39

2 0 SHARE SAVE ...

The video player shows a close-up of a wooden bookshelf. A hand in a red sleeve points to a display of Froebel blocks on one of the shelves. The blocks are small, geometric shapes in various colors (yellow, green, red, blue) arranged on a light-colored surface. The bookshelf is filled with books, and the background is slightly blurred.



# HIS 20'S IN CHICAGO (LATE 1800'S)



Frank Lloyd Wright and wife Catherine

## His House (Playroom addition) – FROEBEL BLOCKS !



Froebel  
Blocks

2019 study of 31 Frank Lloyd Wright sites, plus two FLW influenced family homes

98 views · Jul 10, 2019

2 0 SHARE SAVE ...



Joseph Wunderlich  
8 subscribers

SUBSCRIBE



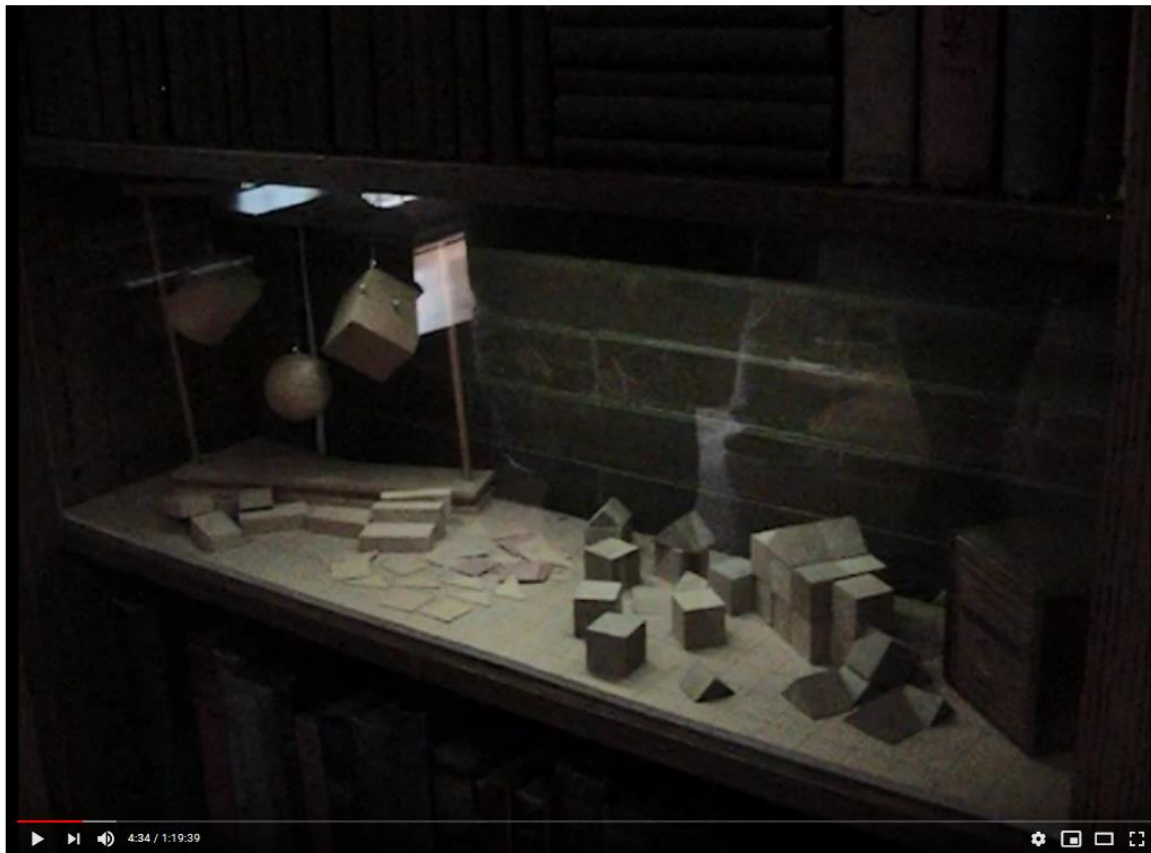


# HIS 20'S IN CHICAGO (LATE 1800'S)



Frank Lloyd Wright and wife Catherine

## His House (Playroom addition) – FROEBEL BLOCKS !



2019 study of 31 Frank Lloyd Wright sites, plus two FLW influenced family homes

98 views · Jul 10, 2019

👍 2 🗨️ 0 ➦ SHARE 📌 SAVE ...

 Joseph Wunderlich  
8 subscribers

SUBSCRIBE

Wunderlich  
Vlog Lecture  
on  
YouTube Channel



FROEBEL BLOCKS ! --- Recall from his youth ( AGE 0-19 )

SIMPLE GEOMETRIES



Barrel Vault

1889, AGE 22

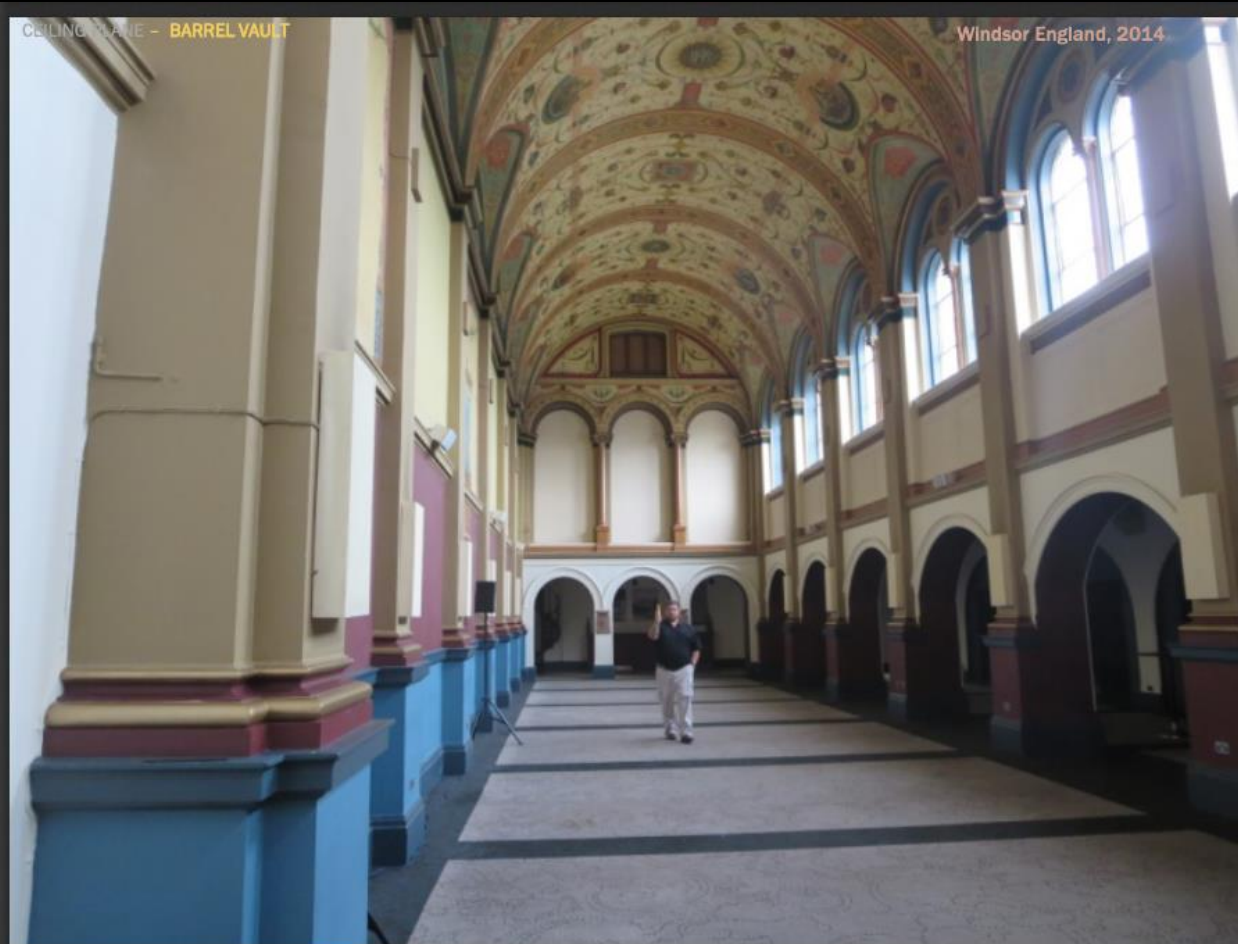


The Playroom in his  
Oak Park Home  
1889



# SIMPLE GEOMETRIES

## Barrel Vault by other Architect, Windsor England



From Wunderlich  
Lecture Series on  
ARCHITECTURE  
THEORY





# SIMPLE GEOMETRIES

## Barrel Vault by other Architect, Kyoto Japan



From Wunderlich  
Lecture Series on  
ARCHITECTURE  
THEORY



# SIMPLE GEOMETRIES

## Barrel Vault by other Architect, Zell Germany

CEILING PLANE - BARREL VAULT

Zell Germany 1992



From Wunderlich  
Lecture Series on  
ARCHITECTURE  
THEORY



FROEBEL BLOCKS ! --- Recall from his youth ( AGE 0-19 )

SIMPLE GEOMETRIES



1889, AGE 22

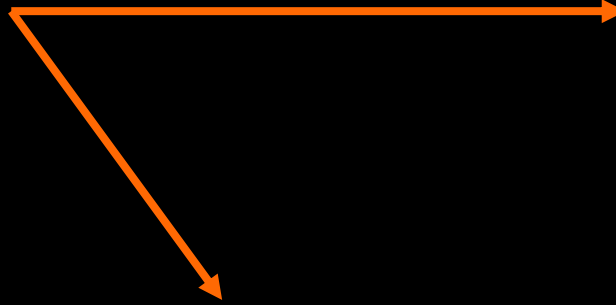


The Children's  
Bedrooms in his  
Oak Park Home  
1889





Consider SIMPLE GEOMETRIES  
in your own designs !



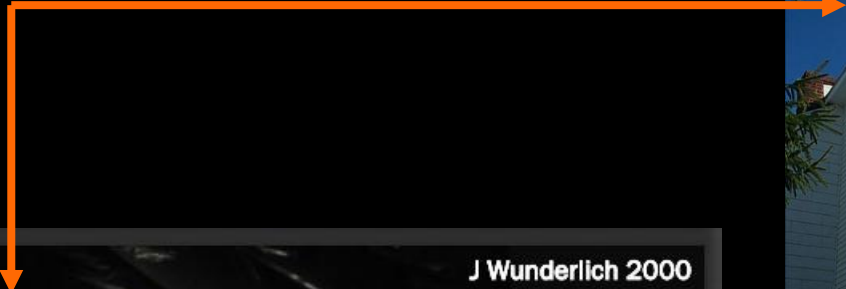
Wunderlich  
Pennsylvania  
Home Design  
2000 ++



From Wunderlich  
Lecture Series on  
Inspirations from  
Mansions



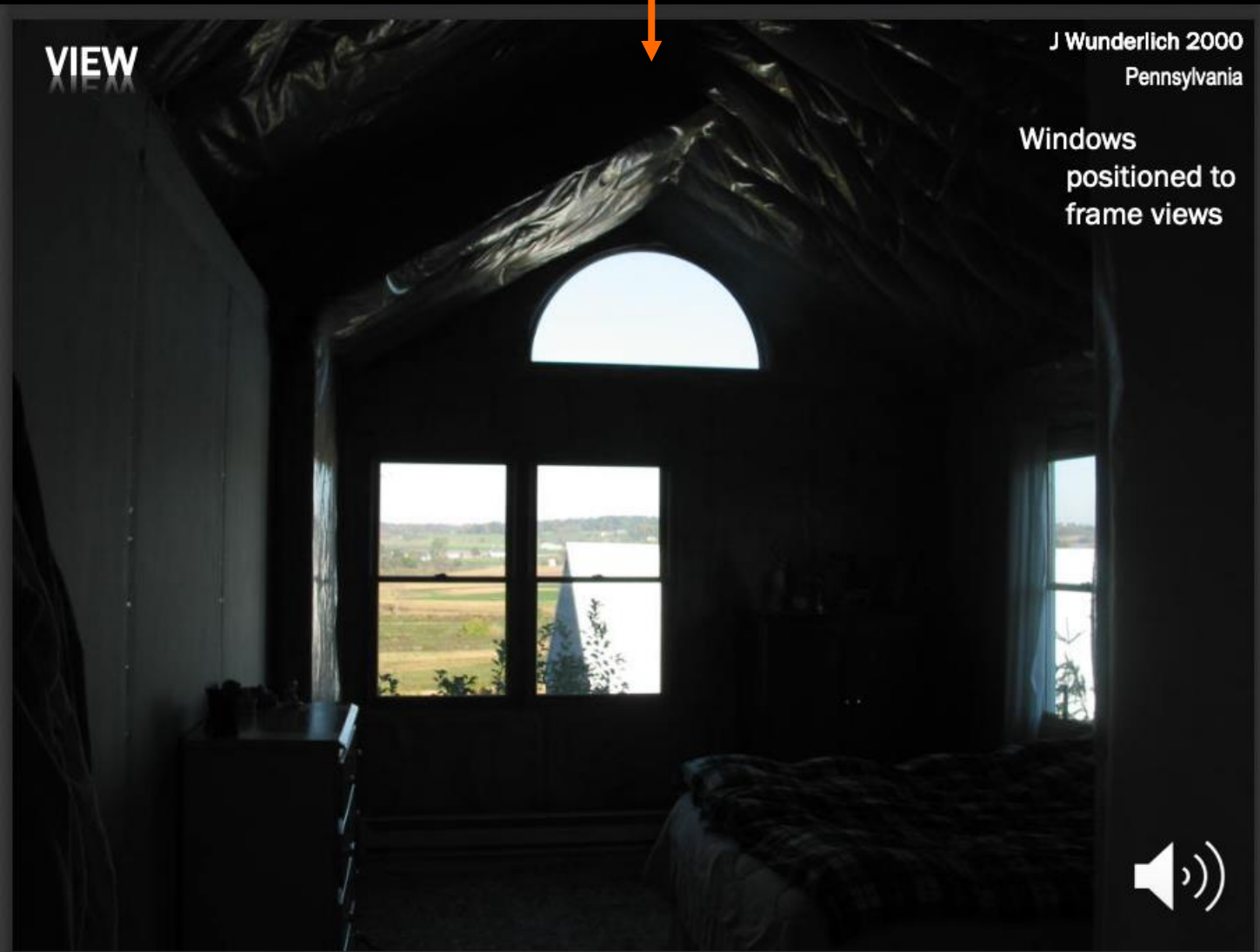
Consider SIMPLE GEOMETRIES  
in your own designs !



VIEW

J Wunderlich 2000  
Pennsylvania

Windows  
positioned to  
frame views



From Wunderlich  
Lecture on  
“INTERIORS”  
in Materials &  
Methods course  
on  
YouTube Channel





SIMPLE GEOMETRIES from AGE 0-19 blocks

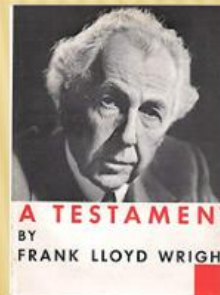
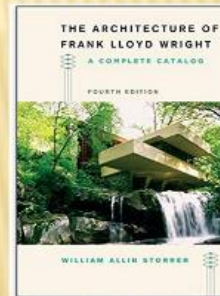
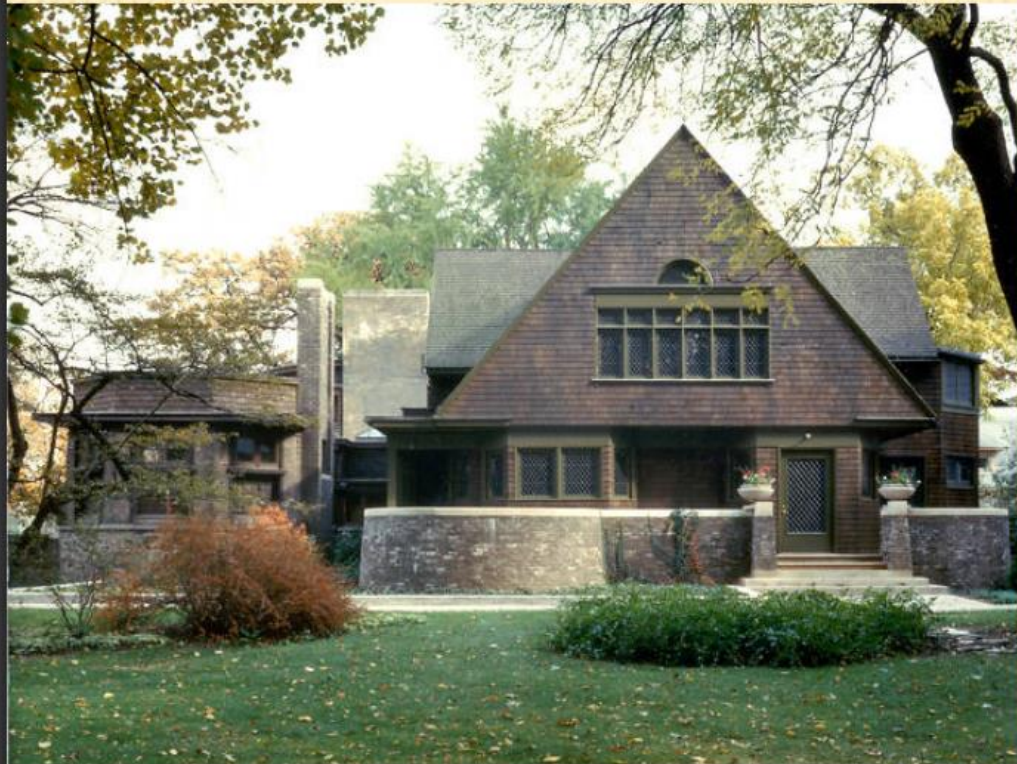
Inspired some designs for 70 years !



1889, AGE 22

## SHAPE - TRIANGLE

*Strong Geometric Shapes in Frank Lloyd Wright's 1889 home in Oak Park (a Chicago suburb) [3] .. influenced by the Froebel blocks of his childhood homeschooling [6]*



From Wunderlich  
Lecture Series on  
ARCHITECTURE  
THEORY





SIMPLE GEOMETRIES from AGE 0-19 blocks  
Inspired some designs for 70 years !



1893, AGE 26



SHAPE - OCTAGON



Frank Lloyd Wright



Robert G. Emmond Residence, Oak Park IL, 1893 Wright



Thomas H. Gale Residence, Oak Park IL, 1893 Wright

From Wunderlich  
Lecture Series on  
ARCHITECTURE  
THEORY



# SIMPLE GEOMETRIES from AGE 0-19 blocks

Inspired some designs for 70 years !

- We'll discuss these in later lectures



## 1905, AGE 38



### SHAPE - SQUARE (cube)

Strong Geometric Shapes in Frank Lloyd Wright's 1905 Unity Temple in Oak Park (a Chicago suburb) [3] .. influenced by the Froebel blocks of his childhood homeschooling [6]

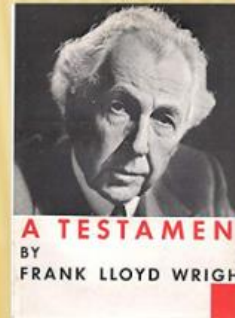
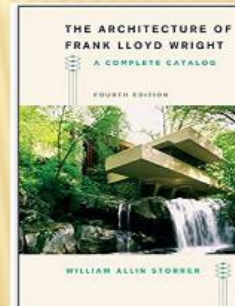


Frank Lloyd Wright  
1867-1958



Unity Temple in Oak Park, 1905 Frank Lloyd Wright  
**(UNITARIAN)**

<https://chicago.curbed.com/2018/11/13/18087686/oak-park-apartment-high-unity-temple>



From Wunderlich  
Lecture Series on  
**ARCHITECTURE**  
**THEORY**





# SIMPLE GEOMETRIES from AGE 0-19 blocks

Inspired some designs for 70 years !

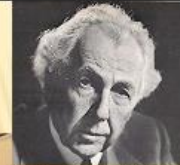
- We'll discuss these in later lectures



## 1937, AGE 60



### SHAPE - *HEXAGON*



Frank Lloyd Wright  
1867-1958



From Wunderlich  
Lecture Series on  
ARCHITECTURE  
THEORY

Hanna-Honeycomb House, Stanford California, 1937 Frank Lloyd Wright

<https://www.tripavvy.com/hanna-house-by-frank-lloyd-wright-4123882>





# SIMPLE GEOMETRIES from AGE 0-19 blocks

Inspired some designs for 70 years !

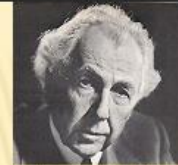
- We'll discuss these in later lectures



## 1956, AGE 89



## SHAPE - HEXAGON



Frank Lloyd Wright  
1867-1958

Hagen House/ Kentuck Knob,  
Ohiopyle, PA.

1956 Frank Lloyd Wright

2015 Field Trip:

<http://users.etsu.edu/w/wunderjt/Frank%20Lloyd%20Wright%202015%20Field%20Trip%20for%20Architecture%20Minor%20students.pdf>

From Wunderlich  
Lecture Series on  
ARCHITECTURE  
THEORY



SIMPLE GEOMETRIES from AGE 0-19 blocks

Inspired some designs for 70 years !

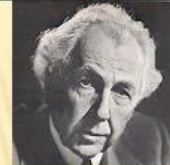
- We'll discuss these in later lectures



1959, AGE ~92



SHAPE - *CIRCLE*



Frank Lloyd Wright  
1867-1958



From Wunderlich  
Lecture Series on  
ARCHITECTURE  
THEORY



Guggenheim Museum, New York City, 1959 opening, Frank Lloyd Wright

<http://www.stua.com/design/guggenheim-museum-new-york/>



Consider SIMPLE GEOMETRIES in your own designs !

## TRANSFORMATION OF FORM - ADDITIVE

Before & After



JT Wunderlich III PhD 2002 ++  
*Homeowner / Design-Builder*  
Southeastern Pennsylvania  
2000sf remodel +1500sf new



From Wunderlich  
Lecture Series on  
**ARCHITECTURE**  
**THEORY**





# 26 YEARS OLD (1893)

[STORRER 2017]

- Did “**Bootleg**” projects on his own, primarily to pay his bills due to his expensive tastes, and his home loan from Louis Sullivan



Frank Lloyd Wright



Architect Louis Sullivan

# 26 YEARS OLD (1893)

[STORRER 2017]

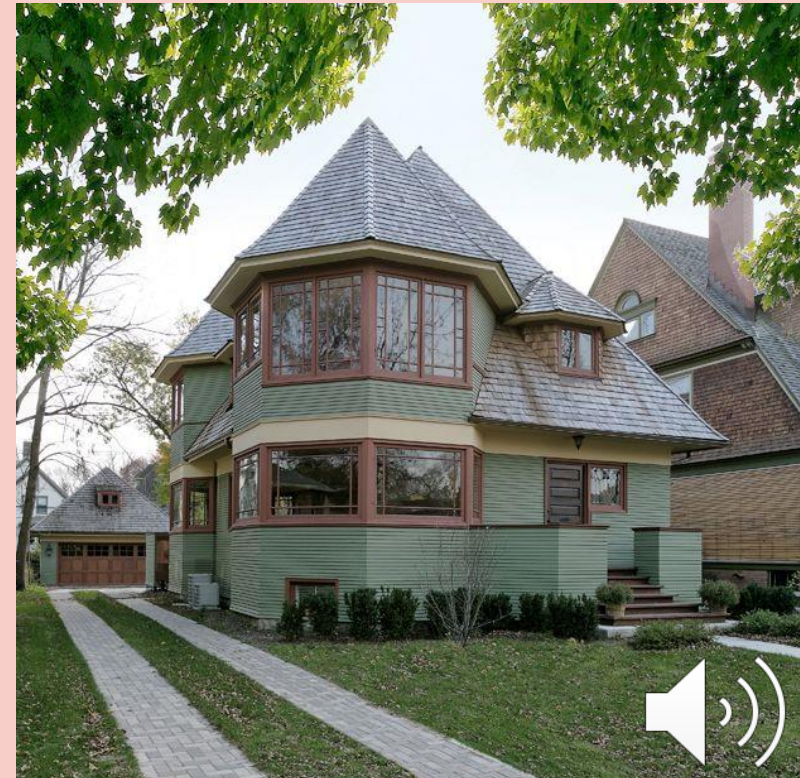
- Example “**Bootleg**” projects
- Likely influences:
  - **Victorian** Architecture, but **without** typical **gingerbread** trim (especially **Queen Anne**)
  - **SIMPLE GEOMETRIES** of childhood wood blocks



Frank Lloyd Wright



Robert G. Emmond Residence



Thomas H. Gale Residence



# 26 YEARS OLD (1893)

[STORRER 2017]

- Louis Sullivan discovered the **“Bootleg” projects** and had no choice but to let Frank Lloyd Wright go.
- **But even though he was fired, he always spoke highly of Louis Sullivan and referred to him as his “Liebermeister” (Dear Master)**



Frank Lloyd Wright



Architect Louis Sullivan





# 26 YEARS OLD (1893)

[STORRER 2017]

- First project of his own Practice



Frank Lloyd Wright

Walter H. Gale Residence  
Oak Park IL

Wunderlich  
Vlog Lecture  
on  
YouTube Channel



2019 study of 31 Frank Lloyd Wright sites, plus two FLW influenced family homes

98 views · Jul 10, 2019

👍 2    💬 0    ➦ SHARE    ≡+ SAVE    ...



Joseph Wunderlich  
8 subscribers

SUBSCRIBE



# 26 YEARS OLD (1893)

[STORRER 2017]

- First project of his own Practice
  - Likely Influences:
    - Victorian without Queen Anne Victorian gingerbread
    - SIMPLE GEOMETRIES of childhood wood blocks
    - His signature WINDOW BANDING and LONG OVERHANG



Frank Lloyd Wright



Walter H. Gale Residence





BANDING WINDOWS in many designs in his 70 year career

- We'll discuss this one in a later lecture

1950, AGE 69



Frank Lloyd Wright

**OPENINGS**

*“opening inside to outside with corner windows”*



Falling Water,  
Mill Run PA,  
1936 by Frank  
Lloyd Wright

Falling Water  
Mill Run PA

From Wunderlich  
Lecture on **“INTERIORS”**  
in Materials & Methods  
course  
on  
[YouTube Channel](#)





BANDING WINDOWS in many designs in his 70 year career

- We'll discuss this one in a later lecture

1937, AGE 70



Frank Lloyd Wright



Son  
Joseph

Taliesin West,  
Architecture  
School  
Phoenix Arizona

From Wunderlich  
Lecture on “INTERIORS”  
in Materials & Methods  
course  
on  
[YouTube Channel](#)



BANDING WINDOWS in many designs in his 70 year career

- We'll discuss this one in a later lecture

1950, AGE 83



Frank Lloyd Wright

Muirhead Farm  
Residence  
Hampshire, IL



Daughter  
Anna

Wunderlich  
Vlog Lecture  
on  
YouTube Channel

2019,20 LECTURE: 31 Frank Lloyd Wright sites, plus two FLW influenced family homes

203 views • Jul 10, 2019

👍 2 🗨️ 0 ➦ SHARE ⚙️ SAVE ...



Joseph Wunderlich  
9 subscribers

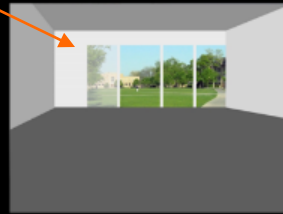
SUBSCRIBE



# BANDING WINDOWS

## OPENINGS

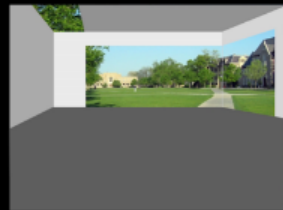
*“A window wall allows more daylight and views, and visually expands space beyond physical boundaries*



*Openings along edges visually weaken corners... as openings increase, space loses its sense of enclosure and begins to merge with the adjacent spaces*



*Locating a skylight along edge where wall and ceiling planes meet allows daylight to wash the surface of the wall, illuminate it, and enhance the brightness of the space*



*Combining a window wall with a large skylight obscures the boundaries between inside and outside...and the building loses its sense of enclosure” [1]*



From Wunderlich  
Lecture on  
“INTERIORS”  
in Materials &  
Methods course  
on  
[YouTube Channel](#)





# BANDING WINDOWS

## VIEW

*“As an opening expands, it opens a room up to a broad vista; The large scene can dominate a space or serve as a backdrop for activities within*



*A window can be located so a specific view can be seen from only one position*



*A bay window can project a person into a scene. If large enough, the projected space can become an alcove able to be occupied” [1]*



From Wunderlich  
Lecture on  
“**INTERIORS**”  
in Materials &  
Methods course  
on  
[YouTube Channel](#)



# BANDING WINDOWS

## OPENINGS

*"As wall openings increase in size, views become part of the spatial experience" [1]*



The Japanese **ENGAWA** (a veranda, an enclosed porch).

VIDEO: <https://www.youtube.com/watch?v=R1EFyca7MHQ>

From Wunderlich  
Lecture on  
“**INTERIORS**”  
in Materials &  
Methods course  
on  
[YouTube Channel](#)



Consider BANDING WINDOWS in your own designs !

**OPENINGS**

Corner Window, to open up Interior to Exterior

J Wunderlich 2000++  
Pennsylvania



From Wunderlich  
Lecture on  
“INTERIORS”  
in Materials &  
Methods course  
on  
[YouTube Channel](#)





Consider BANDING WINDOWS in your own designs !



Frank Lloyd Wright

JT Wunderlich 1989,90 *Design/Builder*  
School Lane Remodel  
Wayne PA



From Wunderlich  
Lecture on  
“INTERIORS”  
in Materials &  
Methods course  
on  
[YouTube Channel](#)



# 27 YEARS OLD (1894)

- First Major Commission, and he said this was his first “Prairie Style House”
  - However, the “Prairie School” of designs would not be fully developed until 1901



Frank Lloyd Wright

Winslow Residence  
River Forest IL



2019,20 LECTURE: 31 Frank Lloyd Wright sites, plus two FLW influenced family homes

203 views • Jul 10, 2019

👍 2 🗨️ 0 ➦ SHARE 📌 SAVE ...

 Joseph Wunderlich  
9 subscribers

SUBSCRIBE

Wunderlich  
Vlog Lecture  
on  
YouTube Channel



# 28 YEARS OLD (1895)

- House at ninety degree angle to road, and large front yard FACING SUN



Frank Lloyd Wright

Moore Residence  
Oak Park IL

Wunderlich  
Vlog Lecture  
on  
YouTube Channel



2019,20 LECTURE: 31 Frank Lloyd Wright sites, plus two FLW influenced family homes

203 views · Jul 10, 2019

👍 2    👎 0    ➦ SHARE    📌 SAVE    ⋮



Joseph Wunderlich  
9 subscribers

SUBSCRIBE





# 28 YEARS OLD (1895)

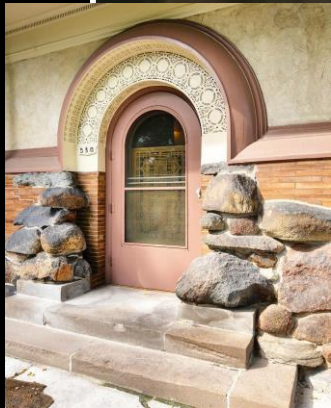
## Japanese inspired



Frank Lloyd Wright

Chauncey L. Williams  
Residence  
Lake Forest IL

Wunderlich  
Vlog Lecture  
on  
YouTube Channel



2019,20 LECTURE: 31 Frank Lloyd Wright sites, plus two FLW influenced family homes  
203 views • Jul 10, 2019

👍 2    🗨️ 0    ➦ SHARE    📌 SAVE    ...



Joseph Wunderlich  
9 subscribers

SUBSCRIBE



# 30 YEARS OLD (1897)

[STORRER 2017]



Rollin Furbeck  
Residence  
Oak Park IL

- Precursor to more mature “Prairie School Style” to come



2019,20 LECTURE: 31 Frank Lloyd Wright sites, plus two FLW influenced family homes

203 views · Jul 10, 2019

👍 2 🗨️ 0 ➔ SHARE ≡ SAVE ...



Joseph Wunderlich  
9 subscribers

SUBSCRIBE

- Broad Central Chimney
- Broad Low Hip Roof
- Long Overhanging Cantilevers
- Brickface up to windowsill
- Limestone Trim
- Symmetrical Windows
- Banding of Windows and Picture Windows

Wunderlich  
Vlog Lecture  
on  
YouTube Channel





# 30 YEARS OLD (1897)

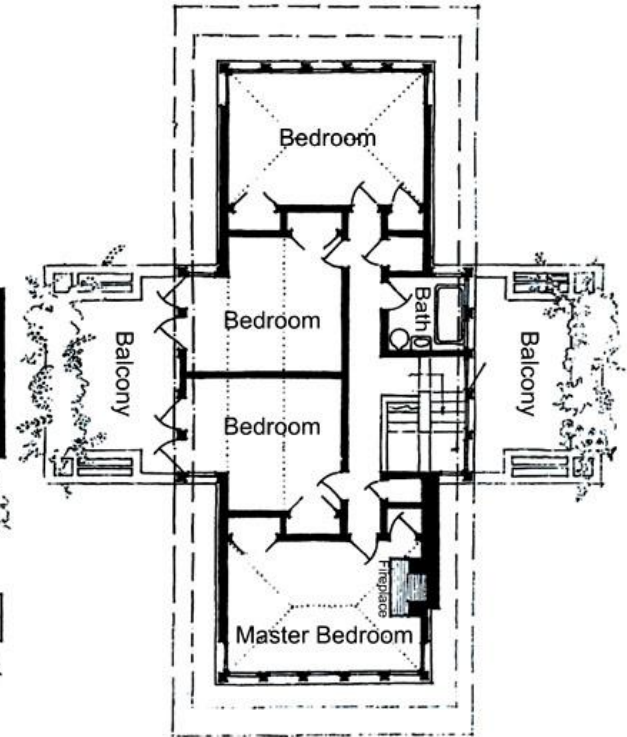
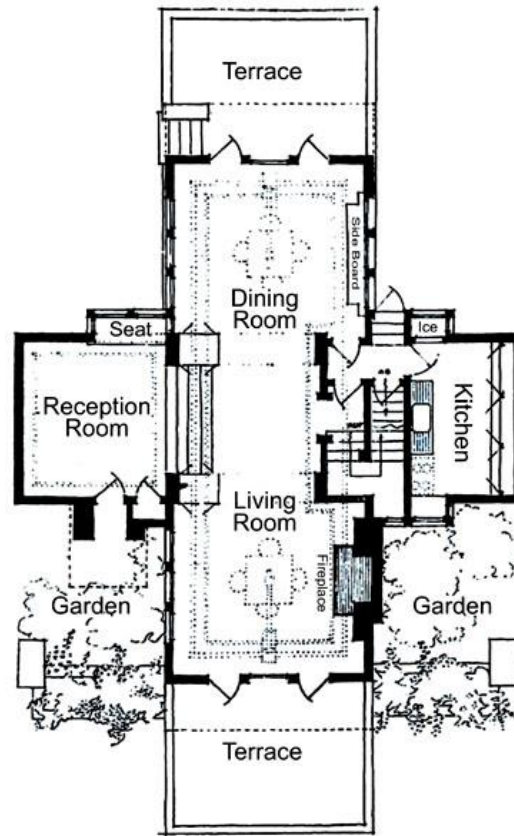
[STORRER 2017]



- “A transitional work from early square and rectangle plans to upcoming **Prairie Cruciform and pinwheeled-planes designs**” [Storrer 2017]



Rollin Furbeck Residence, Oak Park IL



Later (early 1900's) FLW Prairie Cruciform pinwheeled-plane type floor plan

<http://www.steinerag.com/flw/Artifact%20Pages/PhRtS142.htm>





# 33 YEARS OLD (1900)

[STORRER 2017]

- **Japanese** inspiration

- (Gate, and roof gables extend further at peak)



Frank Lloyd Wright



S. A Foster Residence  
Chicago IL



# 33 YEARS OLD (1900)

## Japanese inspiration



Frank Lloyd Wright



Edward R. Hills Residence  
Oak Park IL

Wunderlich  
[Vlog Lecture](#)  
on  
[YouTube Channel](#)

2019,20 LECTURE: 31 Frank Lloyd Wright sites, plus two FLW influenced family homes

203 views • Jul 10, 2019

👍 2    👎 0    ➦ SHARE    📌 SAVE    ⋮

 **Joseph Wunderlich**  
9 subscribers

SUBSCRIBE





# 33 YEARS OLD (1900)

## Japanese inspiration



Frank Lloyd Wright

Edward R. Hills Residence  
Oak Park IL

Wunderlich  
[Vlog Lecture](#)  
on  
[YouTube Channel](#)

2019,20 LECTURE: 31 Frank Lloyd Wright sites, plus two FLW influenced family homes

203 views • Jul 10, 2019

👍 2 🗨️ 0 ➦ SHARE 📌 SAVE ...



Joseph Wunderlich  
9 subscribers

SUBSCRIBE





# 20 TO 33 YEARS OLD (1887-1900)

[WRIGHT 1954]



Frank Lloyd Wright

Begins developing his “**ORGANIC ARCHITECTURE**”

*“The American house had no sense of **unity** ... nor ... sense of **space** as should belong to a **free people**. The thing was more of a **hive** than a home.”*

*“A **box** with a fuzzy lid .... cut up with ... **holes** to let in light and air ... with an especially ugly hole to go in and come out”*

*“Floors were the only part of the house left **plain** after Queen Anne had swept past.”*

*“**Bowels, circulation, and nerves were new in buildings.**”*



## 20 TO 33 YEARS OLD (1887-1900)

[WRIGHT 1954]



Frank Lloyd Wright

As he reminisced about his youth on the Wisconsin farm:

*“All this seemed affectation, nonsense, or profane. The first feeling was **hunger for reality, for sincerity.**”*

*“A desire for **simplicity** that would yield a **broader deeper comfort** as organic... **Organic simplicity...** Ruthless but harmonious order I was taught to call nature ... on the farm... **Beauty in growing things.**”*



# ORGANIC ARCHITECTURE INFLUENCES

[WRIGHT 1954, WRIGHT 1957]



Frank Lloyd Wright

## Farms

- **“Form and Function are one”** ... he referred to the Barn and it's Post & Beam framed interior like the skin of your hand defined by the skeleton beneath
- Wunderlich Pennsylvania farm project:



Before (1877 farmhouse)



After

SEE:

**“Skeleton Beneath the Skin”** ([PDF](#), [YouTube](#))





# ORGANIC ARCHITECTURE INFLUENCES

[WRIGHT 1954, WRIGHT 1957]



Frank Lloyd Wright

- In addition to American Post & Beam, fine trim-work of period styles, and Arts & Crafts movements, **Japan influenced him** through:
  - **Japanese prints**
  - His visit to **Japanese Phoenix Hall Pavilion at 1893 Chicago Worlds Fair**
  - Later, his **visit** to Japan in 1906
- Videos of Japanese carpentry:
  - Masters (including **Phoenix Hall**): <https://www.youtube.com/watch?v=7PCOZkByBDg>
  - Visiting Apprentice: <https://www.youtube.com/watch?v=4kilpeVaMC4>
  - “**Engawa**” (Carpentry, and **culture**): <https://www.youtube.com/watch?v=R1EFyca7MHQ>



# ORGANIC ARCHITECTURE INFLUENCES

[WRIGHT 1954]

*“Their way of doing things was always ...organic. The **Japanese house is the closest thing to our organic house... adapting and incorporating everything.** When we speak of organic architecture we are speaking of something more oriental than western... **My work is in that deeper philosophic sense, oriental.**”*

*“Ancient Greece came nearest, but not very close. And since later western civilizations went too heavily...Greek, the west could not have easily seen an indigenous organic architecture... civilizations based on ... cultural inspiration, chiefly Buddhism... could. But it is not so much Faith, but the principles of Laotse, the Chinese philosopher ”*



# ORGANIC ARCHITECTURE INFLUENCES

Frank Lloyd Wright

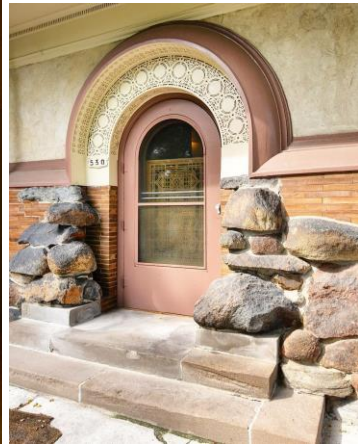


[HO-O-DEN 2018, STORRER 2017]

**Japanese** Architecture seen by Frank Lloyd Wright in the 1800's:



A few Frank Lloyd Wright early works showing **Japanese** influence:

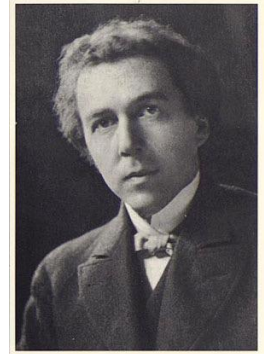




# ORGANIC ARCHITECTURE INFLUENCES

[WRIGHT 1908, WRIGHT 1957]

- **JAPAN**
- *“A sense of the organic... Japanese art knows this... The word edaburi means a **formative arrangement of the branches of a tree**. We have no such word in English.”*



Frank Lloyd Wright



Photo by J Wunderlich  
in Kyoto Japan 2013







Photo by J Wunderlich  
in Kyoto Japan 2013



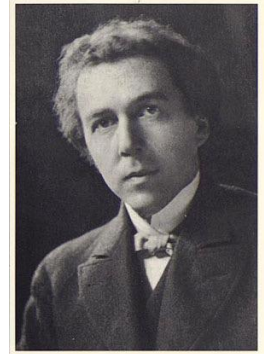
# J WUNDERLICH 2013 JAPAN HERE





# ORGANIC ARCHITECTURE INFLUENCES

[WRIGHT 1954, WRIGHT 1957]



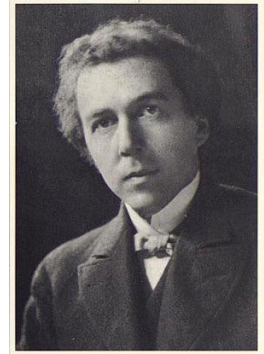
Frank Lloyd Wright

- Wisconsin **Farms**
- **Unitarian** love of nature, God in everything
- Mother's Froebel teaching (**blocks, nature**)
- Father's **music and preaching**
- Architects/Mentors Conover, Silsbee, **Sullivan**
  
- **JAPAN**
  
- **Arts & Crafts** from England
- Soon, **Secession Movement** in Austria
- Later, **Social Engineering** (*Usonian House, Initial Taliesin Fellowship*)



# ORGANIC ARCHITECTURE PHILOSOPHY

[WRIGHT 1908, WRIGHT 1914]



Frank Lloyd Wright

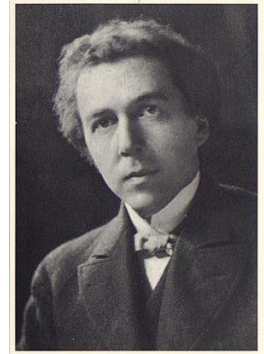
*“A sense of the organic is indispensable to an architect...  
**Knowledge of... form and function lies at the root of the practice; where else can we find the pertinent object lessons Nature so readily furnishes?”***

*“By organic architecture I mean an architecture that **develops from within outward in harmony .... as distinguished from one that is applied from without**”*



# ORGANIC ARCHITECTURE PHILOSOPHY

[WRIGHT 1954, WRIGHT 1957]

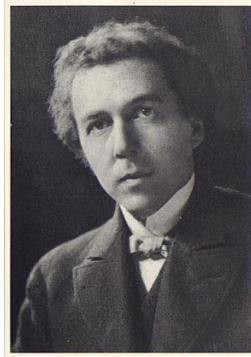


Frank Lloyd Wright

- ***“Nature had become my Bible”***
- ***“Grow Form in realm of human spirit”***
- ***“Forms more naturally significant of idea and purpose”***
  
- **Oppose:**
  - **Neoclassicism**
  - ***“Senseless excess”***
  - ***“Senseless expedience”***
  - **Victorian ornamentation and compartmentalization**
- ***“True ornament had to mean something ... Integral ornament”***
  
- Building ***“Plasticity... like skin surface defined by skeleton”***
- ***“Esthetic and structure become one”***    **“FORM AND FUNCTION ARE ONE”**
  
- Entry ***“Compression/Embrace and Release”***
- ***“I don't build a house without predicting the end of the present social order”***







*“In 1894, I formulated the following:*

- I. **Simplicity** ... true value of any work of art ... **few rooms... Openings as integral features** of the structure ... Excessive love of detail ruins fine things ... **Decoration is dangerous unless you understand it... fixtures assimilated into the design of the structure... Furniture built in**
- II. There should be **as many kinds** (styles) **of houses as there are kinds** (styles) **of people**
- III. The building should appear to grow easily from its site and be shaped to **harmonize with its surroundings**
- IV. Go to the woods for **color schemes. Use the soft warm optimistic tones of earths and autumn leaves** in preference to the pessimistic blues, purples, or cold greens and grays
- V. **Bring out the nature of the materials...** Reveal the nature of the wood, plaster, brick, or stone
- VI. A House that has good character stands good chance of growing more valuable as it grows older, while a house in the prevailing mode... is soon out of fashion”



# ORGANIC ARCHITECTURE

# DESIGN PRINCIPLES

Frank  
Lloyd  
Wright

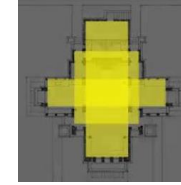
[WRIGHT 1908 , WRIGHT 1954, WRIGHT 1957, WRIGHT 1908]

CONFORM TO SITE, sun, hillsides, planes close to earth identify with ground



PINWHEELED PLANES (Prairie Style) CRUCIFORM

- around BROAD CENTRAL CHIMNEY, and with LONG OVERHANGS



FOLDED PLANE like origami ...continuity...walls, ceilings, and floors become one

HUMAN SCALE is true building scale

FORM and FUNCTION are one! – *not one following other, secondarily*

SIMPLE GEOMETRIES



OPEN FLOOR PLAN



- A unified whole - inside and out - ORCHESTRATE SUN
- DESTROY THE BOX -- eliminate Victorian box-type rooms
- Use materials in NATURAL STATE -- same on exterior and interior
- Walls become screens - FLOW between interior & exterior – BANDS of WINDOWS, FRAME VIEWS
- Interior space made exterior as architecture – like [ENGAWA](#)



COMPRESSION & RELEASE – intentionally cramped entry to magnify architecture as it unfolds

Bring out NATURE of materials - Innovate materials

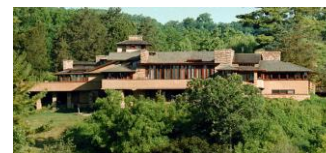
Color schemes of soft WARM OPTIMISTIC TONES of earth, and autumn leaves

Fixtures assimilated into structure... much of furniture built-in

Architecture = MUSIC ... from an early age !

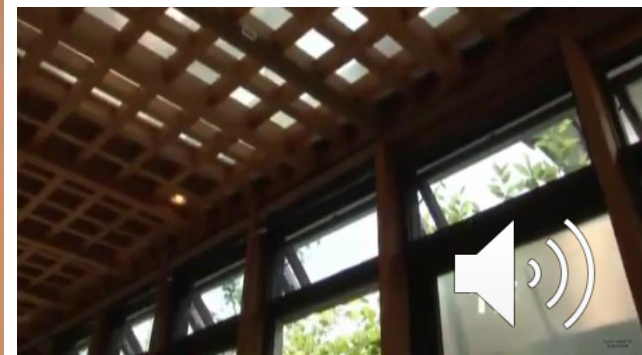
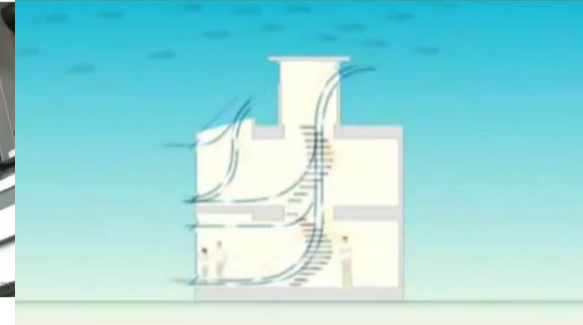


Inspirations from Japan, and Italy



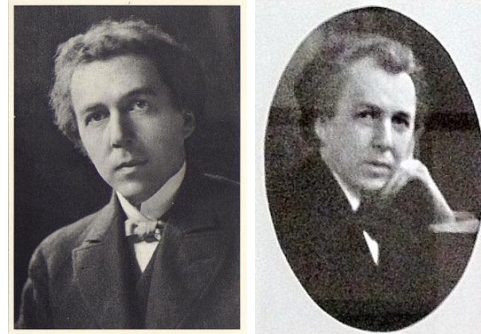
# ORGANIC ARCHITECTURE TODAY !

- **LEED** (Leadership in **E**nergy and **E**nvironmental **D**esign) Standards (mostly in **U.S.**)
- Present day “**Green**” (Organic) Architecture in **Japan** **Ancient + Hi-Tech**
  - Watch VIDEO: <https://www.youtube.com/watch?v=LUck3EtVrnl>





SEE **PART 3** “Ages 34 to 42 (1901 to 1908)” including:



Frank Lloyd Wright

- His “**Prairie Style**” expanding on his “**Organic Architecture**”



- And influences from:

- **Japan**
- **American Arts & Crafts movement**



- **Secession Movement in Vienna, Austria**



# HIS 20'S IN CHICAGO (LATE 1800'S)

Wunderlich Vlog  
on [YouTube Channel](#)  
(watch until  
time 18:51):  
<https://www.youtube.com/watch?v=MC8dpAiC0dw&feature=youtu.be>



Frank Lloyd Wright



2019 study of 31 Frank Lloyd Wright sites, plus two FLW influenced family homes

98 views · Jul 10, 2019

👍 2 🗨️ 0 ➦ SHARE ⚙️ SAVE ⋮



Joseph Wunderlich  
8 subscribers

2019 Chicago-Land tour of 30 Designs on 31 significant Frank Lloyd Wright sites; compiled from ~100 video clips and ~1000 photos taken in June 2019. Part of a JT Wunderlich lecture series used in parts of five undergraduate architecture courses. See course syllabi:



SUBSCRIBE