

Renderings

2015-Present

During the development of early architectural models, It is often necessary to visualize small changes like paint colors or locations of plants on site. The renderings shown here are taken from a variety of my undergrad presentations and a couple from internships for school. These projects showcase the development of my rendering skills from start of college up to graduation. Even though computer renderings are a small part of the overall design process for a building, they are still complicated and unique enough to be displayed as their own section here.



Great Window Project 2019

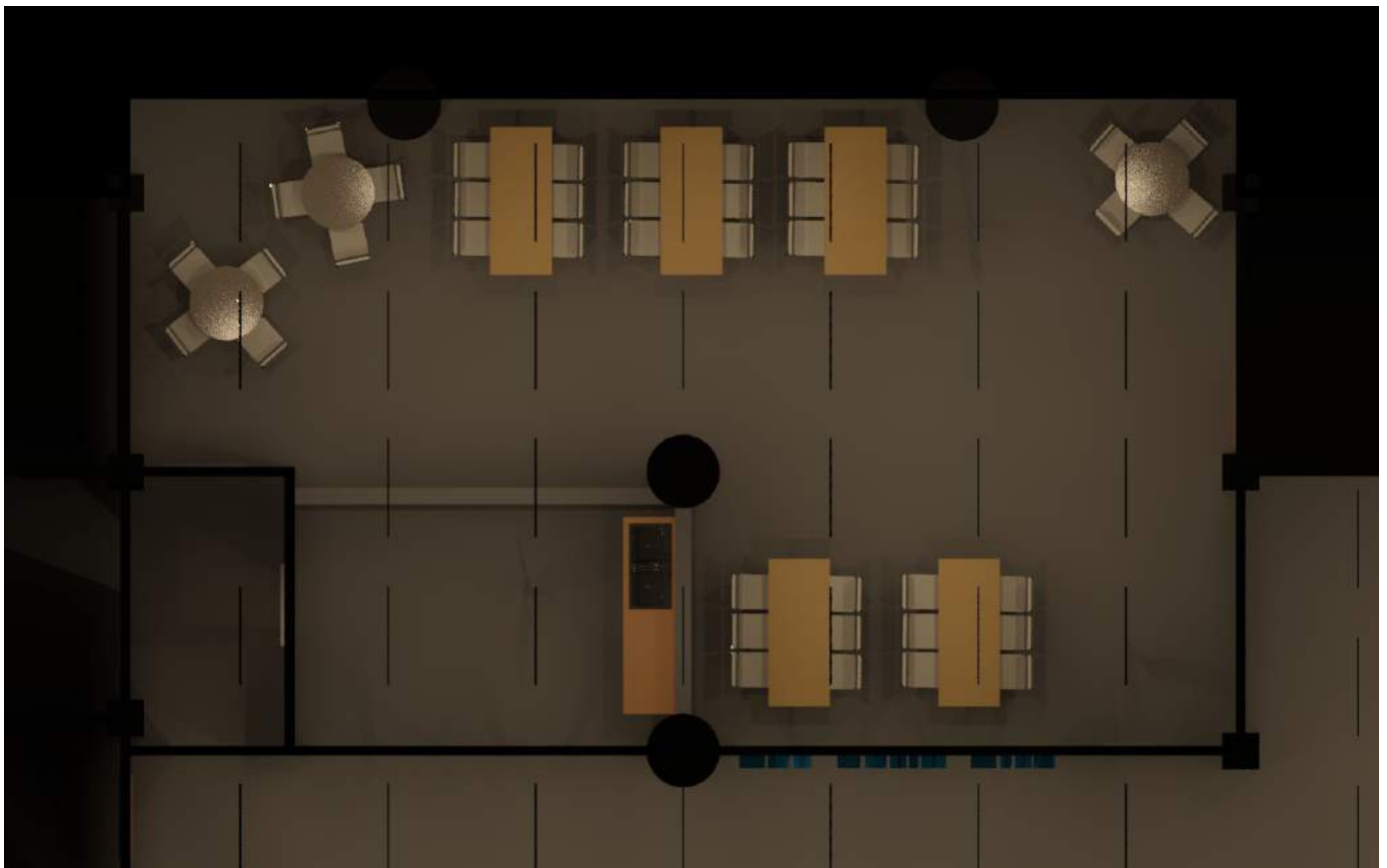
Elizabethtown College High Library Cafe

April 24,2017

Elizabethtown College had been planning to create a cafe and student lounge since 2017. For a class architecture project, the task was to create a cafe space in any area within the bounds of the library's second floor lobby. This project required me to collaberate with the director of the library, Sarah Penniman, to create CAD drawings for the entire first floor once the idea gained traction and the renovation of the second floor of the lobby began in the summer of 2019.



Isometric renderings of the interior

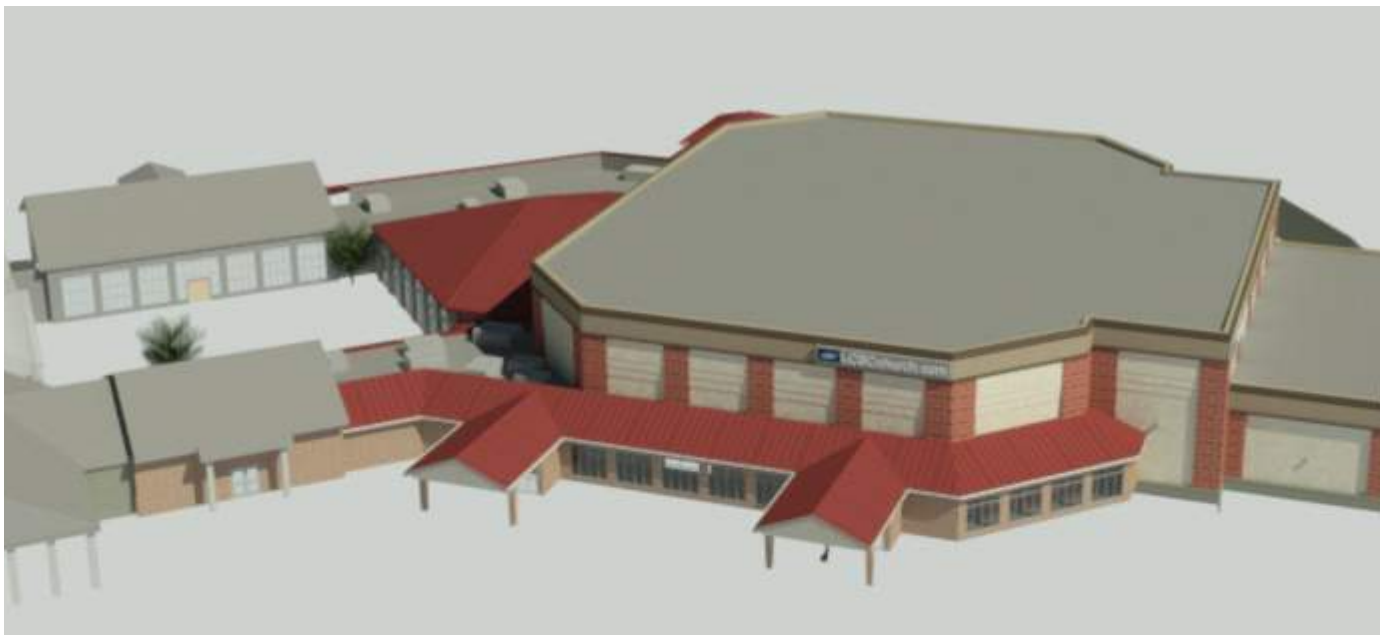
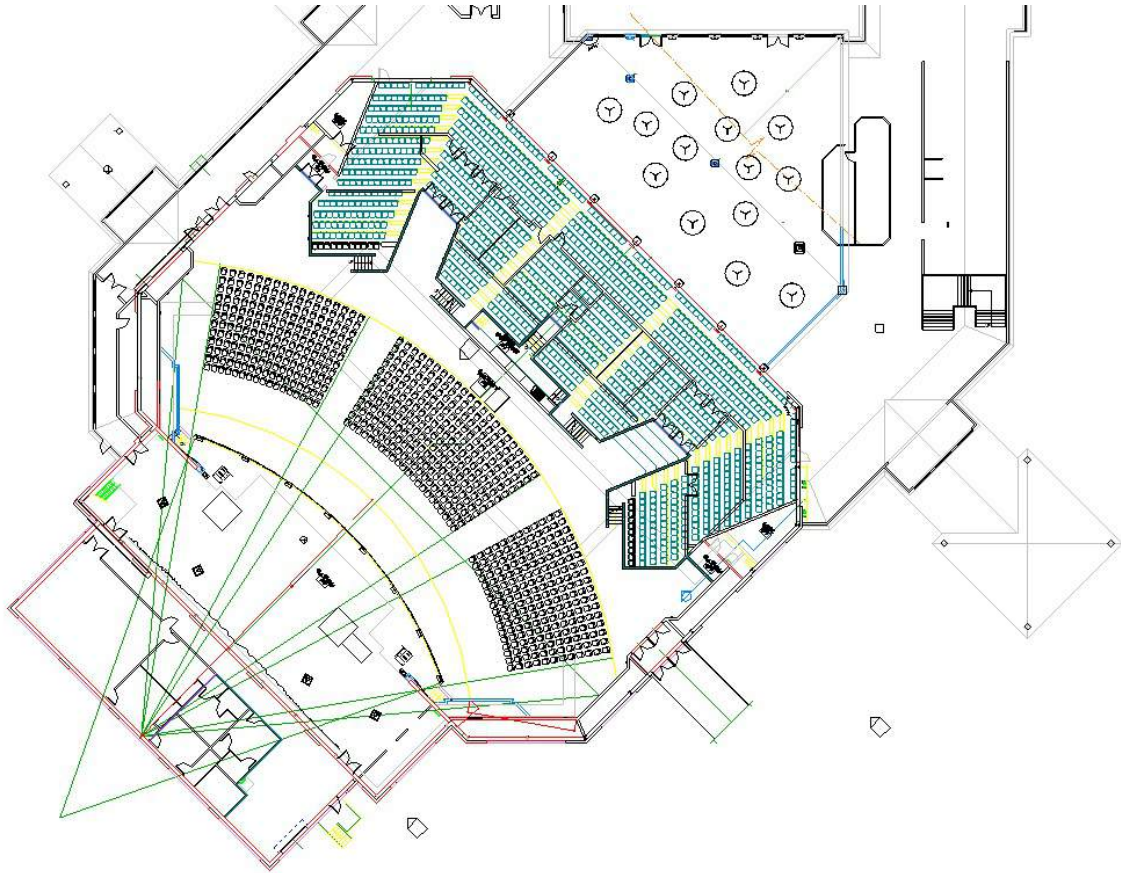


Floor plan rendering

LCBC Church Manheim Campus Model

2018

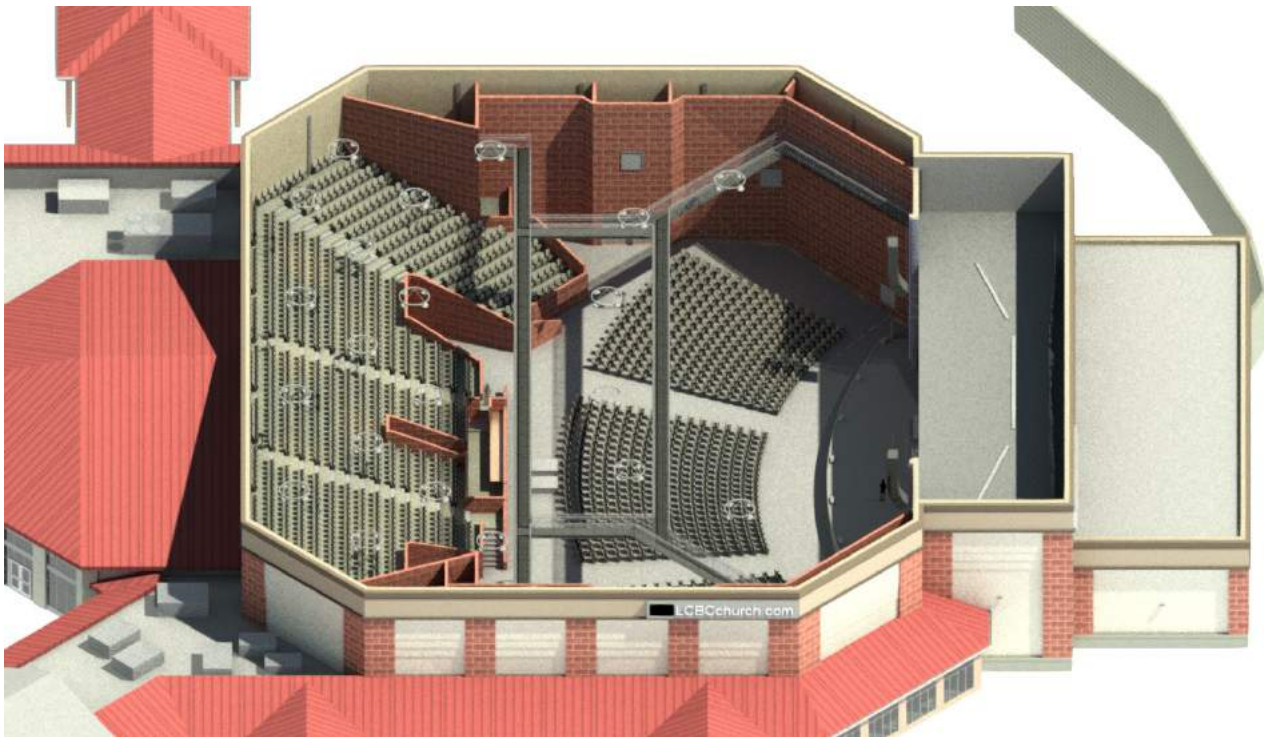
This model was made as an internship project with architect Jim Stuckey at LCBC Church in Manheim PA in 2018 during an interior renovation period. I gathered the dimensions by hand and used drawings provided by the architect to create a model in Revit. After the model was complete, I created renderings of the interior atrium to visualize the changes that the church was pursuing. The model was a success and the proposed changes to the atrium were put into place.



Exterior Rendering of LCBC



Interior Rendering of LCBC Atrium



Exterior Rendering of Auditorium Seating

Elizabethtown College Hoover Lobby

March 3, 2018

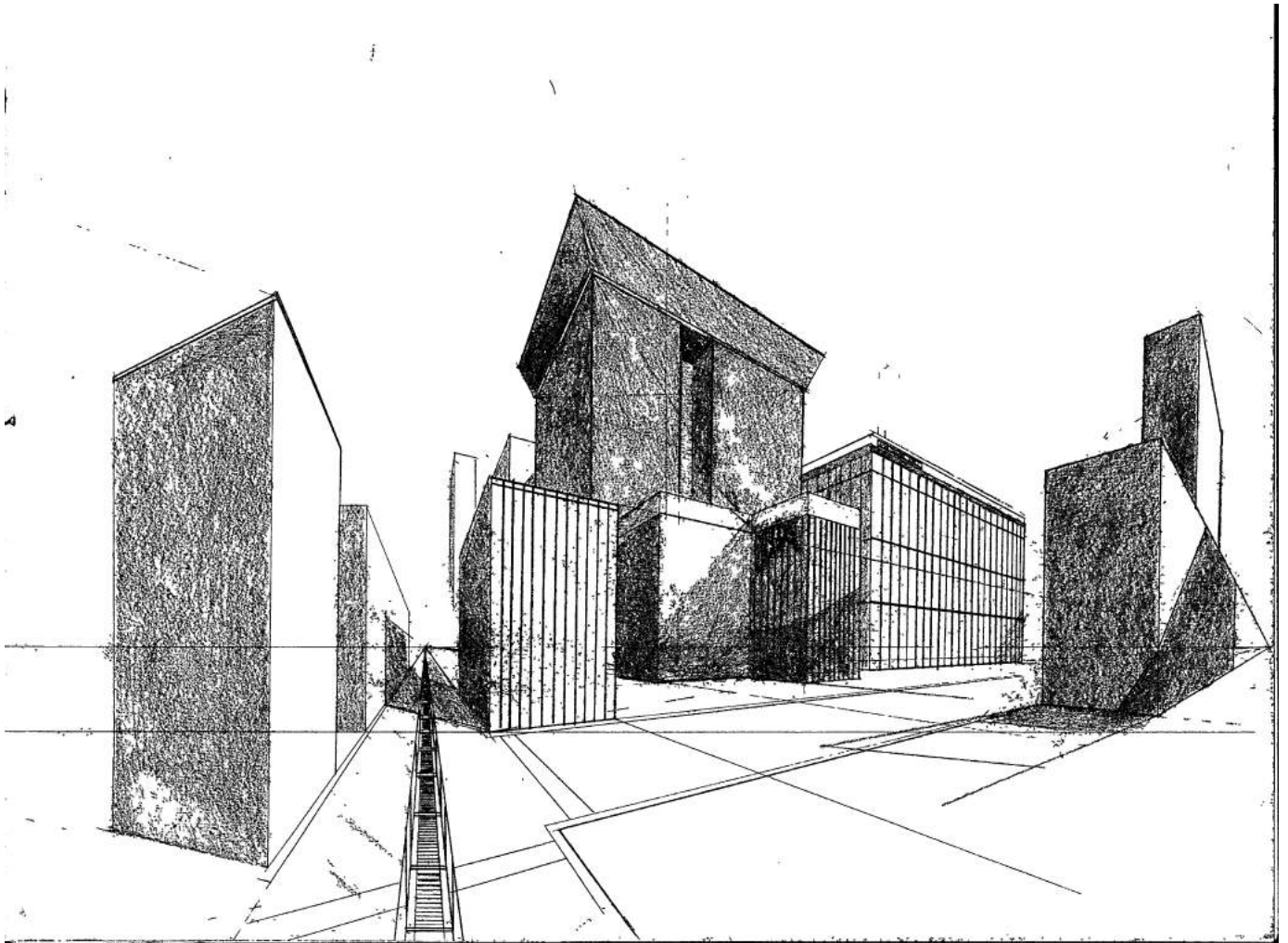
Dr. Ciocirlan, Chair of the Department of Business at Elizabethtown College, hired me to develop computer renderings of a proposed remodel of the first floor lobby of the Hoover Business Center. The existing space was seldom used by students because of poor lighting and lack of new furniture. Together in collaboration with the business office, we implemented several ideas to liven up the space and create a more welcoming environment to visitors of the building, including added plants, updated furniture, and a coffee area. The entire project has been ongoing.



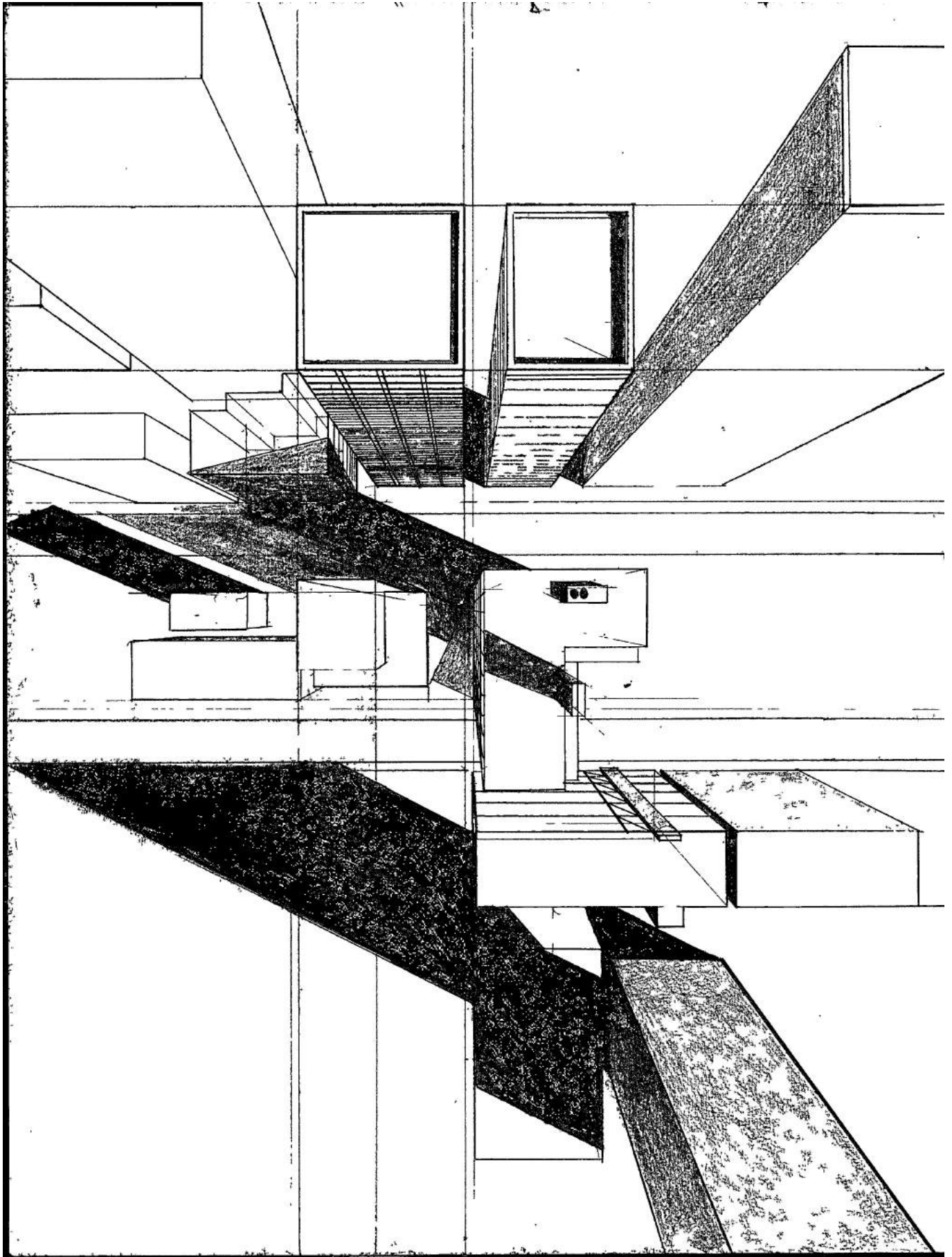
Drawings

2019

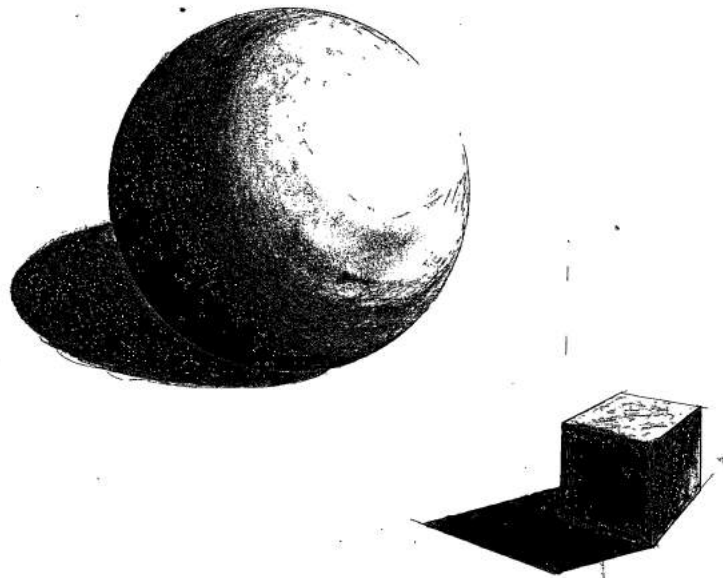
The following sketches highlight the most recent development of my architectural illustrations. The process of drawing architecture as a means of capturing the play of light has been my goal in the following sketches from my 2019 sketchbook. I primarily draw from memory and imagination. Recently, however, I have begun practicing drawing from life; this can be seen in the images near the end of this slideshow.



Skyscrapers 9x11"



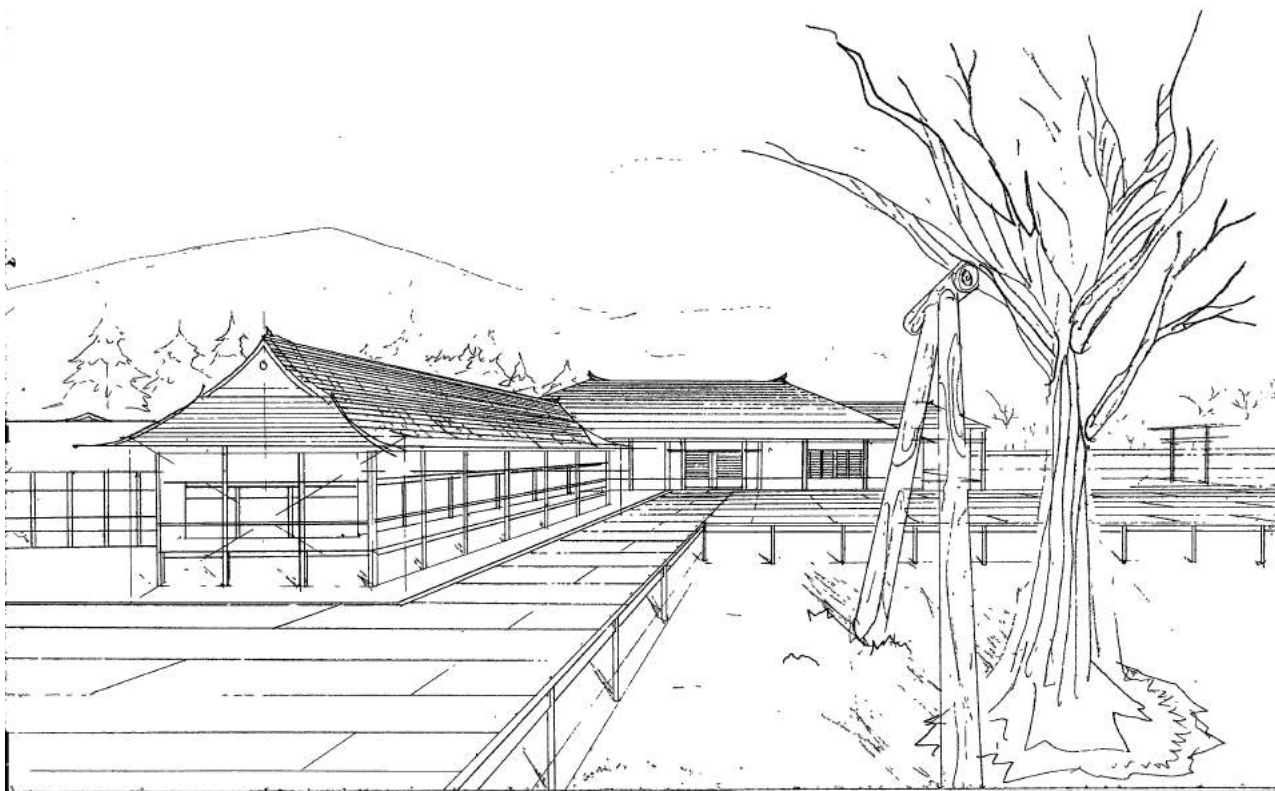
Skyscraper Overhead 9x11"



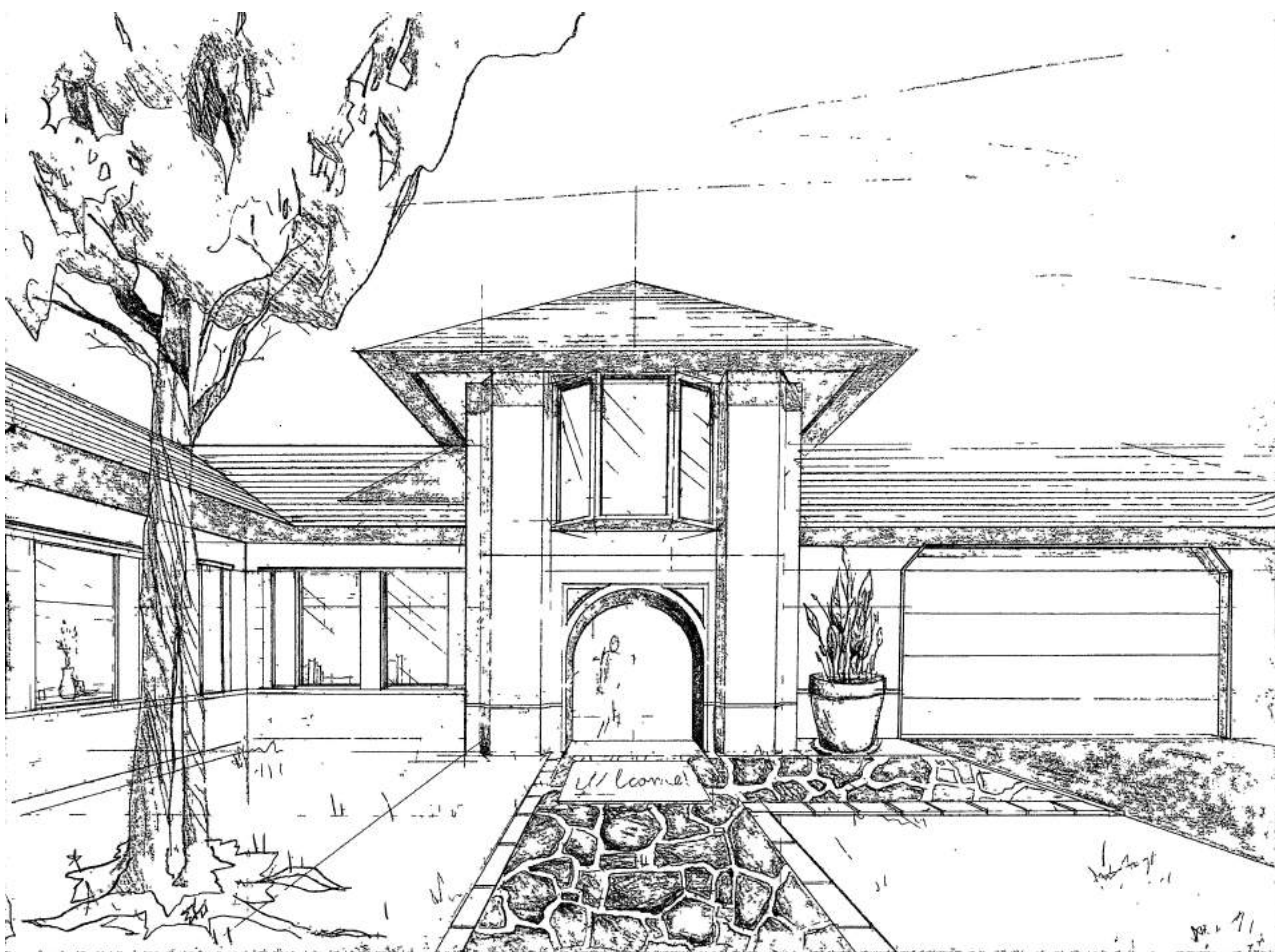
Geometry 9x11"



New York 9x11"



Japanese Temple 9x11"



Midwestern Villa 9x11"

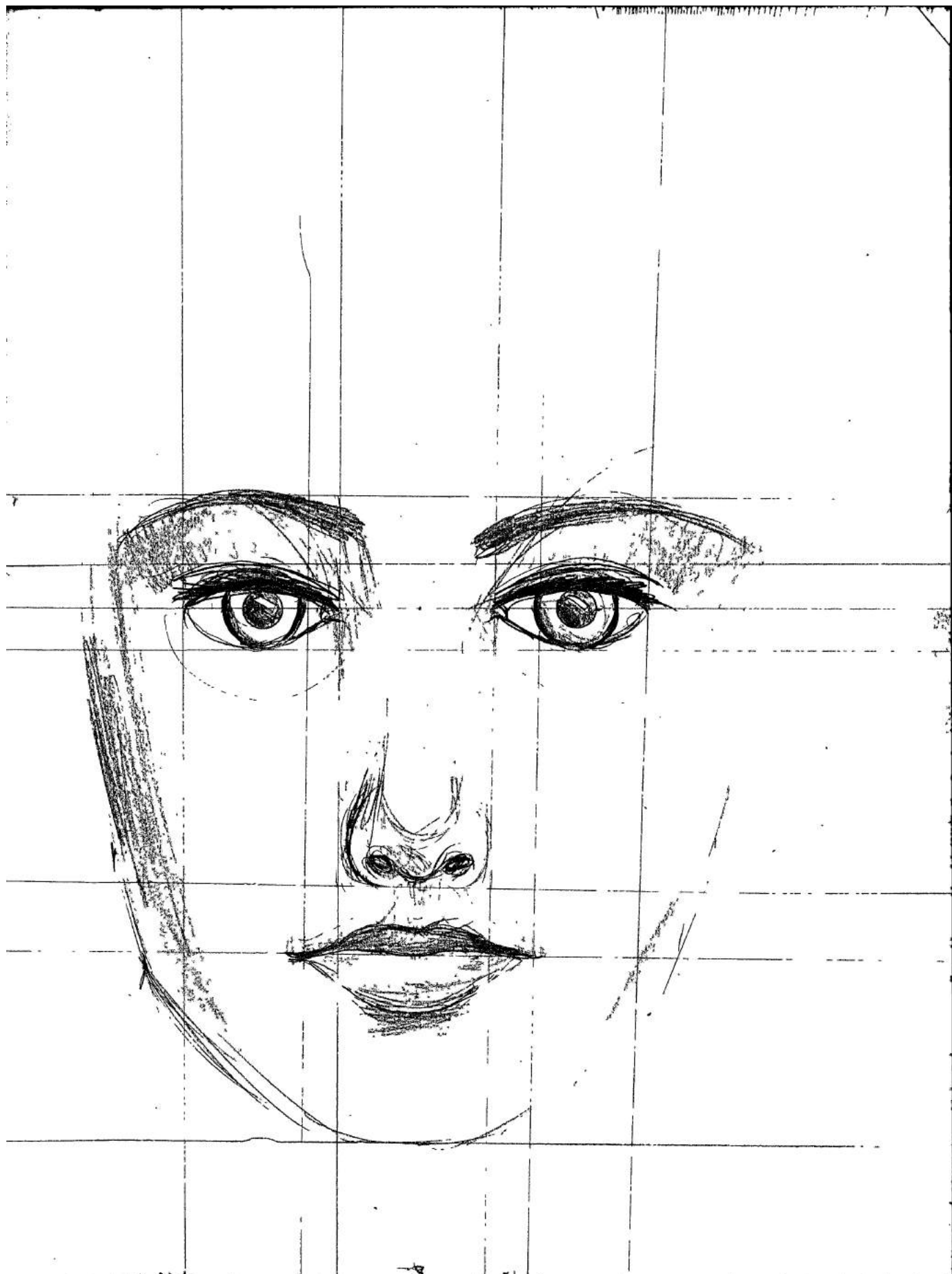
9-2-19



Italian Plaza 9x11"



Hills 9x11"



Model 9x11"



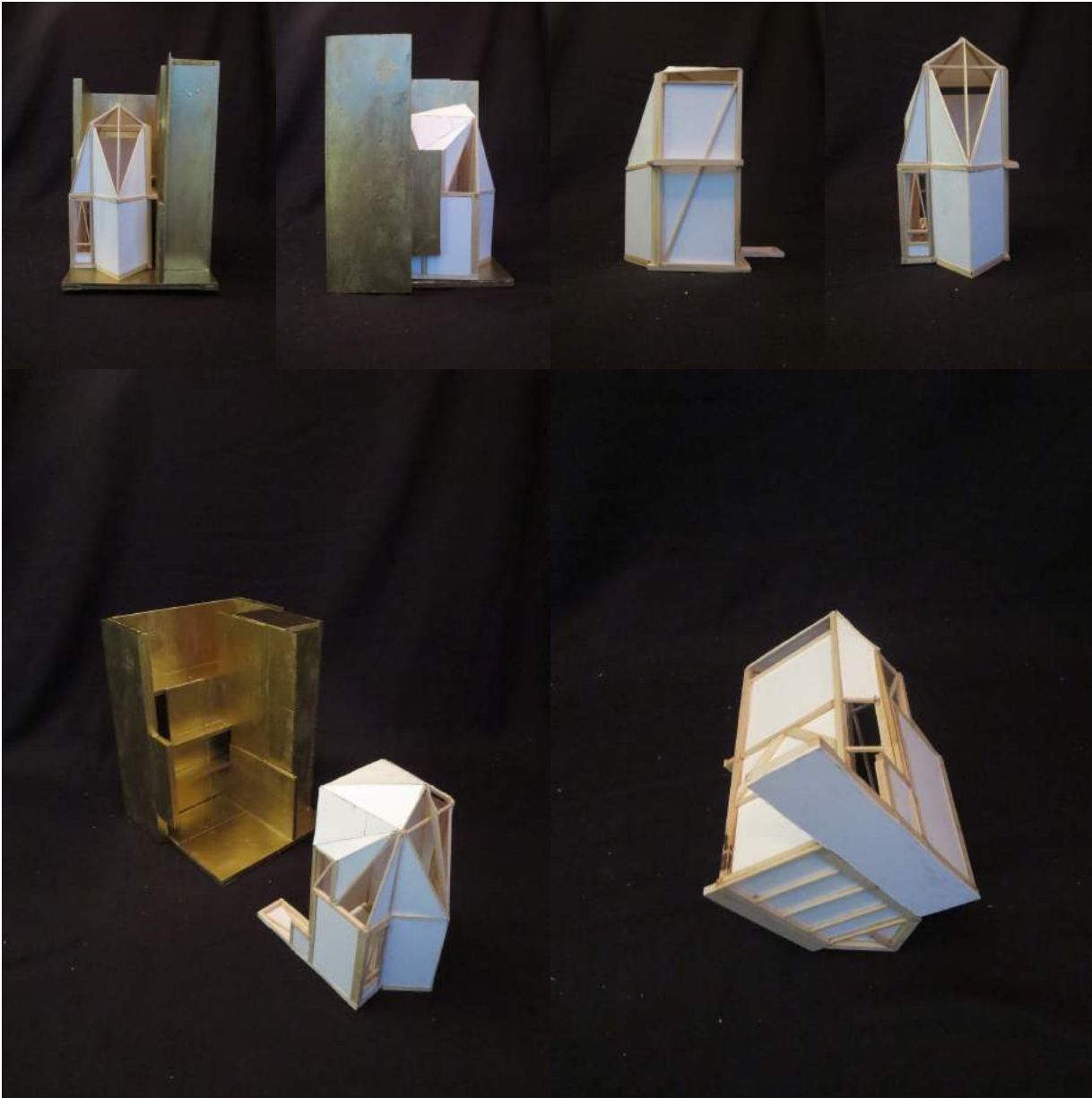
Acropolis 9x11"

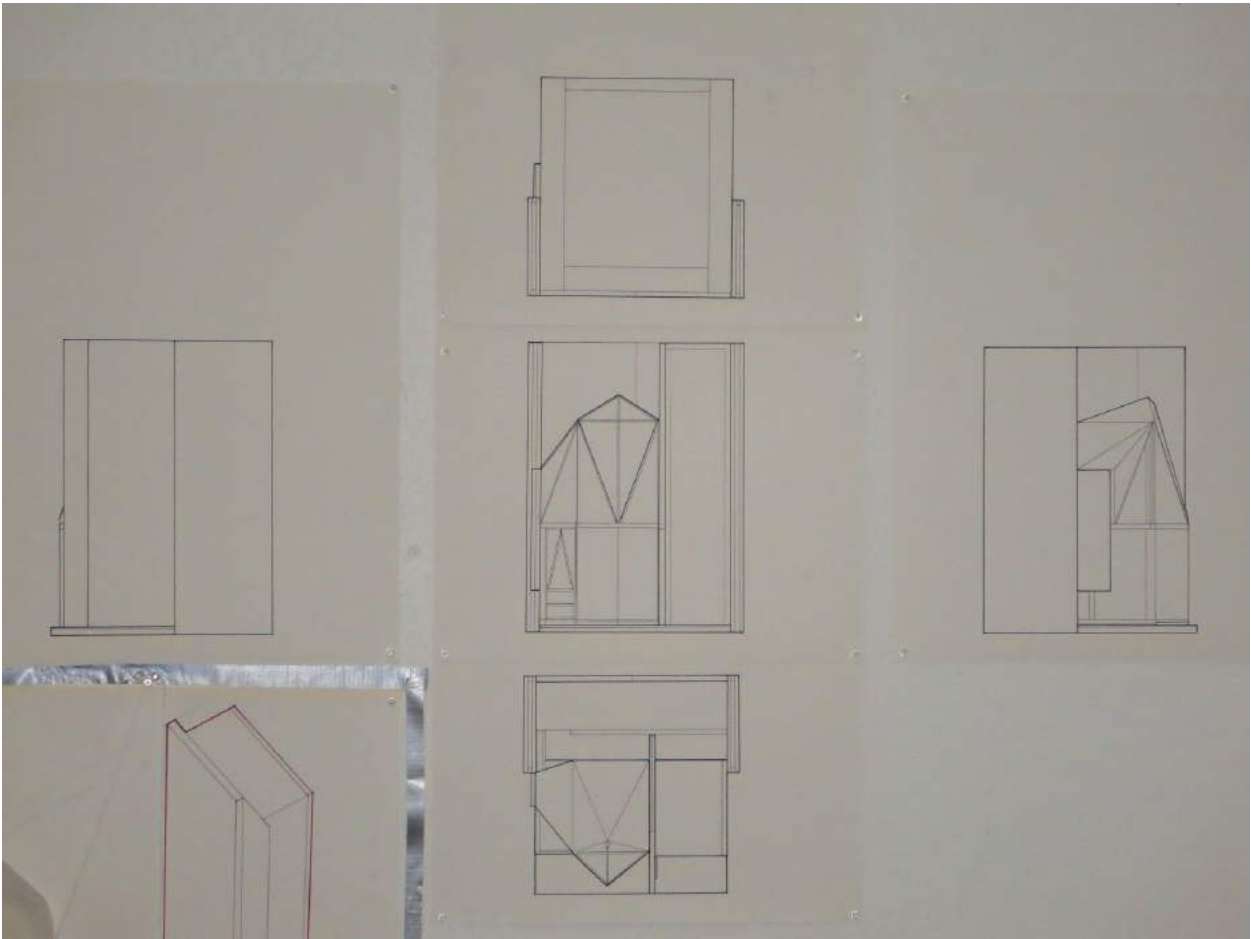
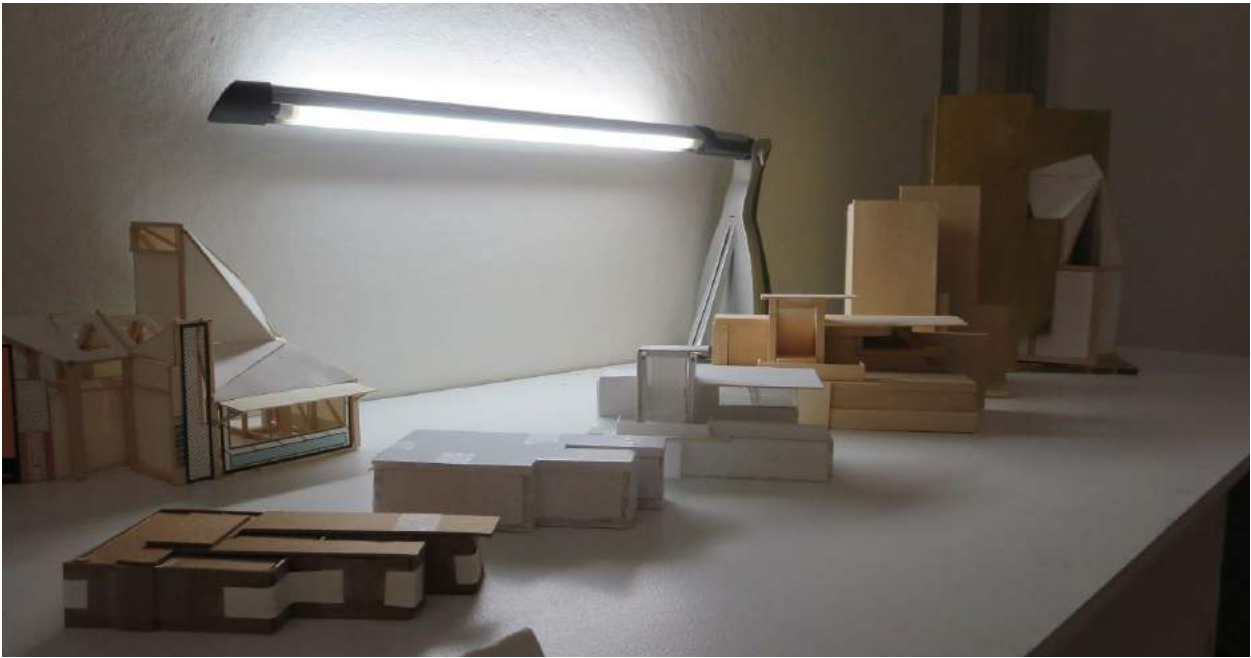
Early Work

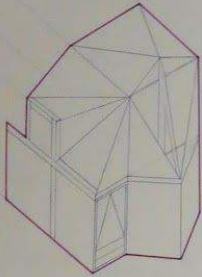
2014-2016

Marywood SOA Models

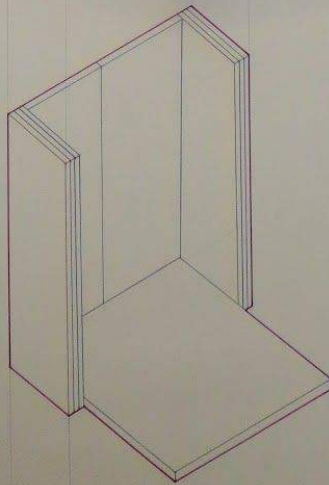
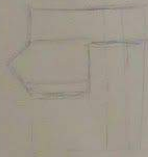
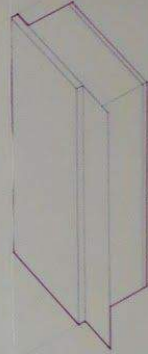
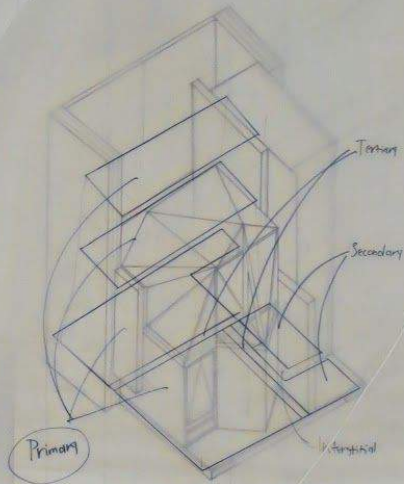
August 14, 2016







Within



Around

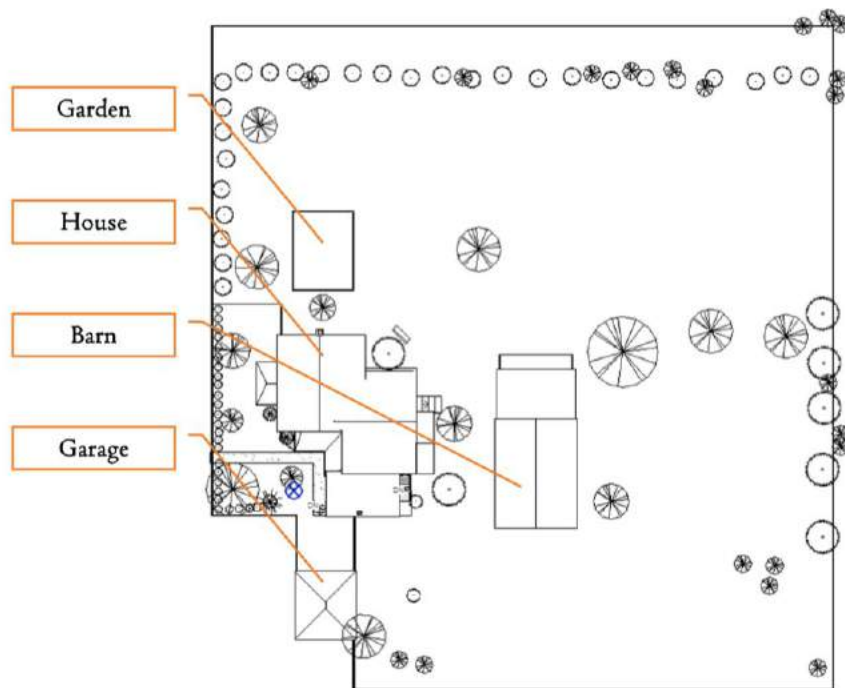
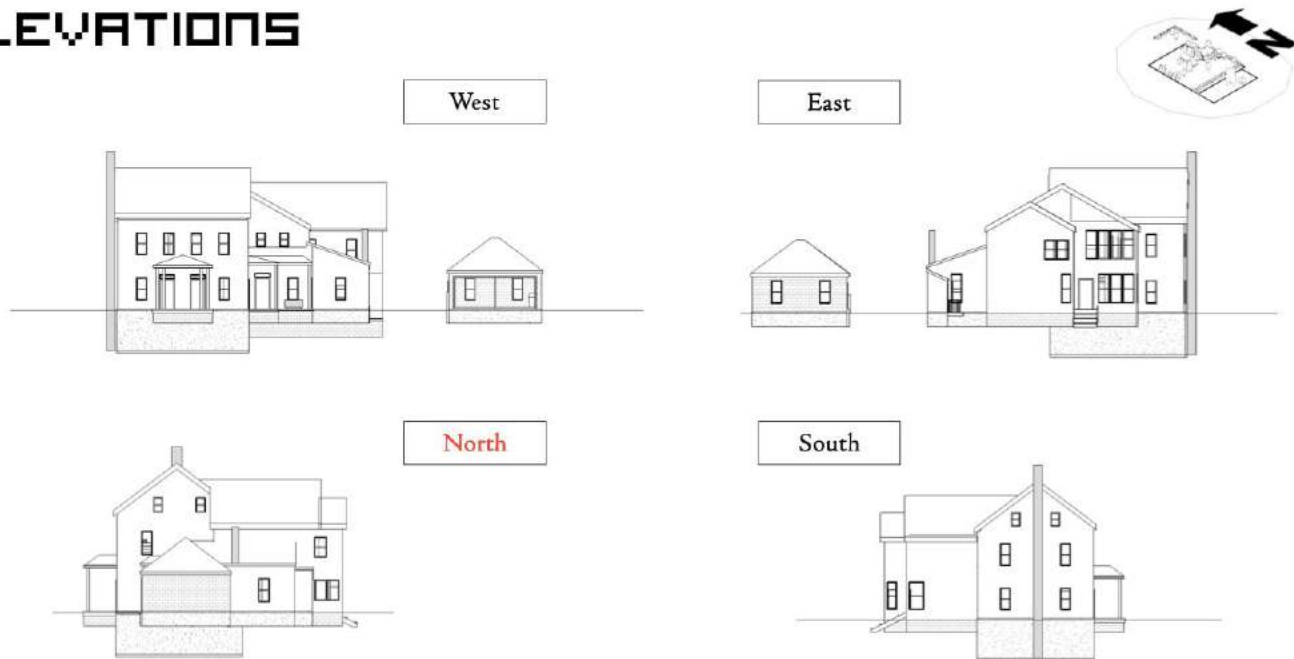


House Model

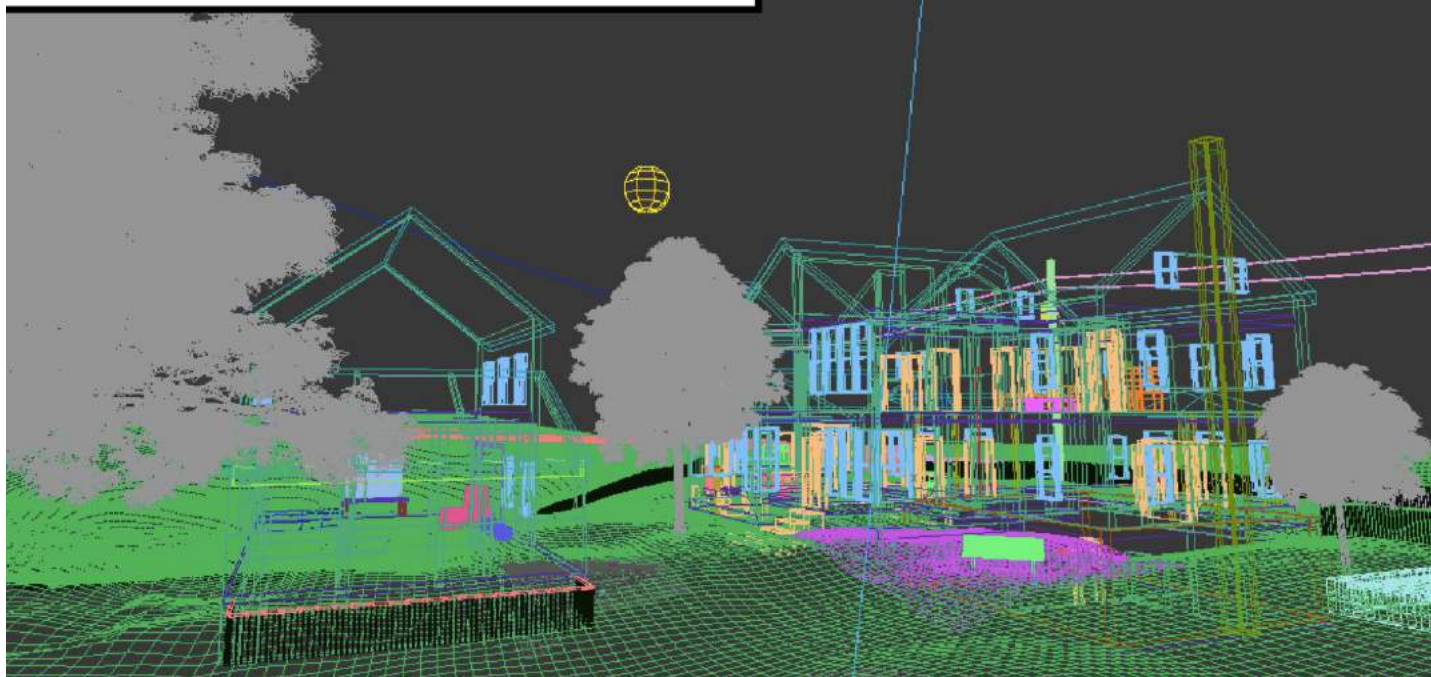
2016

My first completed project in Autodesk Revit Architecture. This was a learning experience from start to finish and contains custom window and door families made from accurate measurements taken by hand from the farmhouse where I grew up. It began as a passion project and later facilitated the gaining of factual knowledge of AutoCAD and real drafting experience.

ELEVATIONS



RENDER 4 WIREFRAME



RENDER 4



New Elizabethtown College Campus Model

March 5, 2015

One of my earliest college projects. The layout describes a college campus surrounding a park and fountain. The inspiration for this project was Prato della Valle in Padua Italy and Lititz Spring Park near my hometown, two locations that share a similar landscaping and ellipse-shaped water feature at the center.

