

REVIT Tutorial-7

Name(s) and signature(s) confirming completion of tutorial: _____

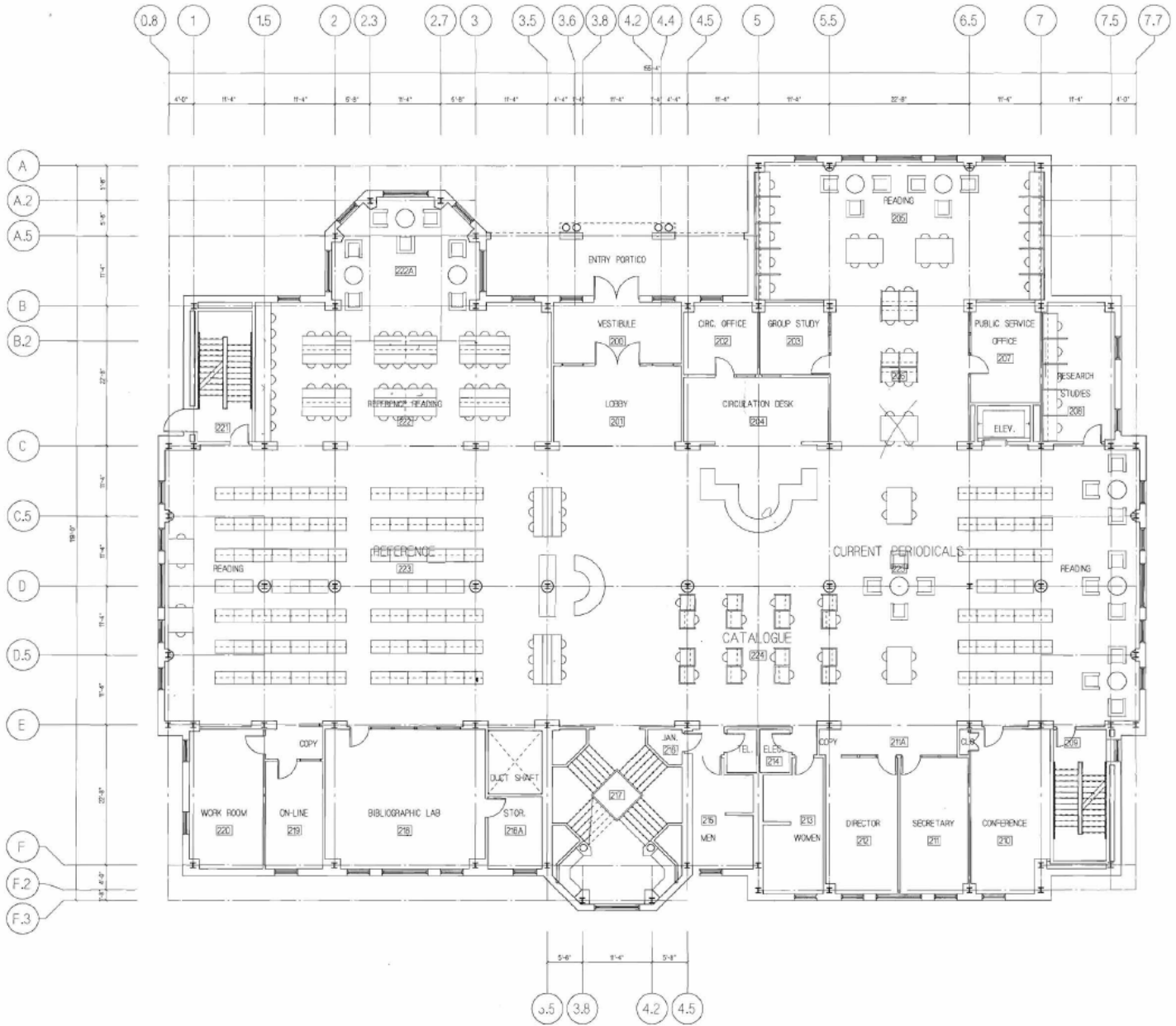
<http://users.etaoin.edu/w/wunderli/Architecture Lectures/REVIT 7 Tutorial.pdf>

JT Wunderlich PhD

In E273 Studio, use College REVIT licenses; At home, use free 3-year student license: <http://www.autodesk.com/education/free-software/revit>

ACOUSTICS OF HIGH LIBRARY CAFÉ DESIGN *Main Floor (“Level 2”)*

Sketch on the drawing below your Café Design and clearly identify the main walls, doors, and interior windows that are providing sound isolation between your Café Design and the Library’s normal adjacent activates.



Main Floor “Level 2”

Go to SWEETS CATALOG and search "STC" (Sound Transmission Class)

<http://sweets.construction.com/SearchResults/Internal/STC>

The screenshot shows the Sweets website interface. At the top, there is a navigation bar with the Sweets logo, a search bar containing 'STC', and buttons for 'SEARCH', 'BROWSE PRODUCTS', and 'MANUFACTURERS'. Below the navigation bar, the page title is 'Home / Search'. On the left side, there is a sidebar with filters. Under 'NARROW YOUR RESULTS', there are sections for 'View' (Products selected, Manufacturers), 'Manufacturers' (Acoustical Surfaces, Inc. (43), Ruskin Manufacturing (26), Maxxon® Corporation (21), SAFTI FIRST (18), Georgia-Pacific Canada (14), Specified Technologies, Inc. (13)), and 'Content Types' (Catalog (103), CAD (112), BIM (82), Specs (204), Galleries (1), CEU (210), Green (26)). The main content area is titled 'Search Results for STC' and shows '319 Products'. Below this, there are three product listings:

- Ruskin Manufacturing - ACL1245: Stationary Acoustical Louver**

Description: The ACL1245 Acoustical louver has 12" deep blades and a 45 degree blade angle. Its construction can be either formed steel or formed aluminum. This model features: Ruskin Manufacturing 3900 Dr. Greaves Rd. Kansas City, MO 64030 Tel: (816) 761-7476 Fax: (816) 761-1936 E-mail: ruskin@ruskin.com...

Manufacturer: [Ruskin Manufacturing](#)

Category: [acoustical louvers](#) | [architectural louvers](#) | [louvers and vents...](#)

MasterFormat: [Louvers and Vents](#) | [Louvers](#)
- Nystrom - Double Door AcousticMAX™ 48 Smoke Vent**

Description: Double Door AcousticMAX™ 48 Smoke Vent Model: Double Door AcousticMAX™ 48 Smoke Vent Block the intrusion of exterior environmental noise with Nystrom's new STC 48 Double Door Acoustical Smoke Vent. Designed for performing arts centers and theaters, every detail has been designed with precision....

Manufacturer: [Nystrom](#)

Category: [hatch](#) | [scuttles](#) | [smoke vents...](#)

MasterFormat: [Roof and Wall Specialties and Accessories](#) | [Smoke Vents](#)
- Babcock-Davis - Double Door AcousticMAX™ 48 Smoke Vent**

Description: Double Door AcousticMAX™ 48 Smoke Vent Model: Double Door AcousticMAX™ 48 Smoke Vent

Skim through all ~300 products for ones that you want to specify in your design for ACOUSTICAL ISOLATION OF ADJACENT SPACES. LIST A COUPLE HERE:

Go to SWEETS CATALOG and search "Reverberation" (i.e., ways to control Reverberation Time)
<http://sweets.construction.com/SearchResults/Internal/Reverberation>

The screenshot shows the Sweets Catalog search results for 'Reverberation'. The page has a dark header with the Sweets logo, a search bar containing 'Reverberation', and buttons for 'SEARCH', 'BROWSE PRODUCTS', and 'MANUFACTURERS'. Below the header, there are navigation links for 'HOME', 'LOGIN', and 'REGISTER'. The main content area is titled 'Search Results for Reverberation' and shows 1020 products. On the left, there are filters for 'View' (Products, Manufacturers), 'Manufacturers' (Armstrong World Industries, Inc. (942), ROCKFON (17), Acoustical Surfaces, Inc. (16), Wenger Corporation (13), Owens Corning (9), Meyer Sound Laboratories), and 'Content Types' (Catalog (965), CAD (773), BIM (804), Specs (50), Galleries, CEU (999), Green (2)). The search results list three items: 'Armstrong World Industries, Inc. - SOUNDSCAPES Blades: 3921 - Acoustical Ceiling', 'CertainTeed Insulation - CertaPro™ AcoustaBoard™ Black', and 'Eckel Industries Inc. - Reverberation Rooms'. Each item includes a small image, a description, manufacturer information, category, and master format.

HOME LOGIN REGISTER

Sweets™

Reverberation SEARCH BROWSE PRODUCTS MANUFACTURERS

Home / Search

NARROW YOUR RESULTS Clear All

View

- Products
- Manufacturers

Manufacturers

- Armstrong World Industries, Inc. (942)
- ROCKFON (17)
- Acoustical Surfaces, Inc. (16)
- Wenger® Corporation (13)
- Owens Corning (9)
- Meyer Sound Laboratories,


Content Types

- Catalog (965)
- CAD (773)
- BIM (804)
- Specs (50)
- Galleries
- CEU (999)
- Green (2)

Search Results for Reverberation

Below you will find links to company and product information for manufacturers and suppliers in Sweets matching the term Reverberation ... more

1020 Products Results per page: 25


 **Armstrong World Industries, Inc. - SOUNDSCAPES Blades: 3921 - Acoustical Ceiling**

Description: SOUNDSCAPES Blades: 3921 - Acoustical Ceiling Model: SOUNDSCAPES Blades: 3921 - Acoustical Ceiling Acoustical vertical panels reduce reverberation time in your space, now in three new depths and 10 new curved profiles for wave designs. Key Features

Manufacturer: [Armstrong World Industries, Inc.](#)

Category: [acoustical ceilings](#) | [ceiling](#) | [commercial ceilings...](#)

MasterFormat: [Ceilings](#) | [Acoustical Ceilings](#) | [Acoustical Ceiling Suspension Assemblies](#)


 **CertainTeed Insulation - CertaPro™ AcoustaBoard™ Black**

Description: CertaPro™ AcoustaBoard™ Black Model: CertaPro™ AcoustaBoard™ Black PRODUCT OVERVIEW This rigid fiber glass board is used for applications requiring an exposed black faced sound-absorbing insulation. AcoustaBoard™ Black has an abuse-resistant nonwoven facing that is fully bonded to the insulation;...

Manufacturer: [CertainTeed Insulation](#)

Category: [insulation products](#) | [moisture-resistant panels](#) | [sound suppression...](#)

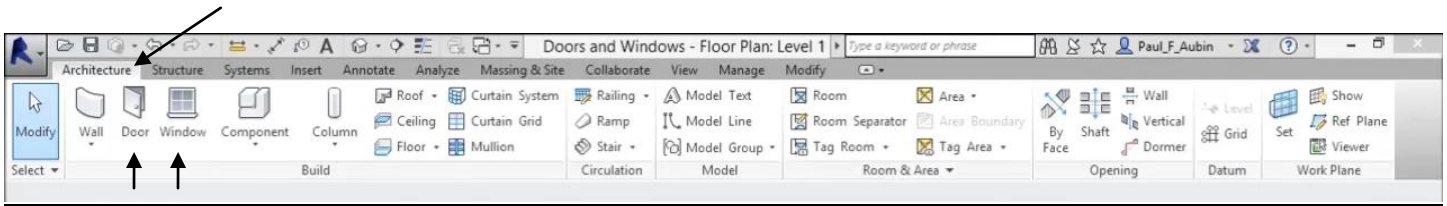
MasterFormat: [Acoustic Insulation](#) | [Acoustic Board Insulation](#) | [Acoustic Room Components...](#)

 **Eckel Industries Inc. - Reverberation Rooms**

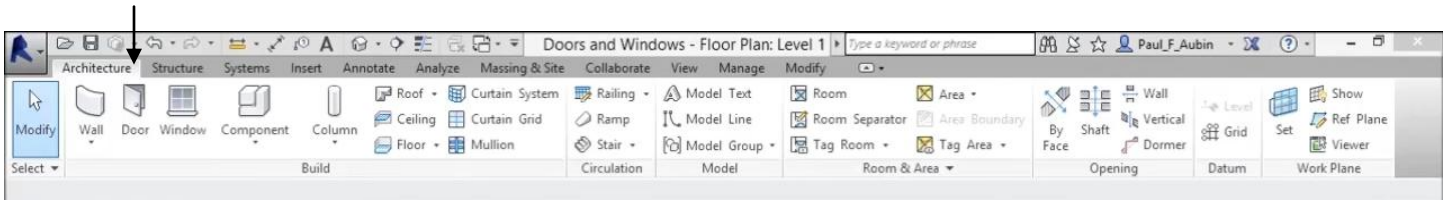
Skim through all ~1000 products for ones that you may want to specify in your design for REDUCTION OF REVERBERATION TIME WITHIN YOUR CAFÉ (note that this will also result in reduction of sound transmission into the adjacent library activities). LIST A COUPLE HERE:

OPTIONAL: Again watch this 2017 Revit video on Doors and Windows (*watched previously in last Tutorial*):
https://www.youtube.com/watch?v=D1Gs5vJQ9jQ&index=18&list=PLzAQZFR7SsdgX_v1enijlesCkMeMo8CON

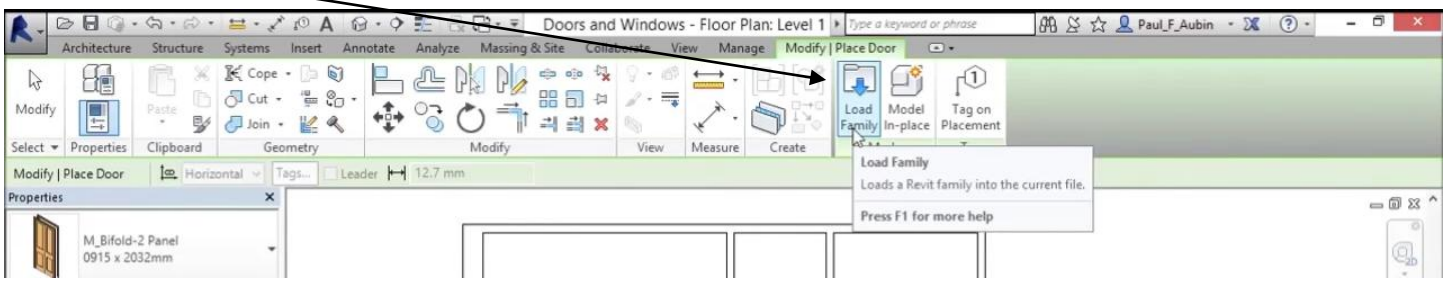
Click on the **“Architecture”** on the **Ribbon**



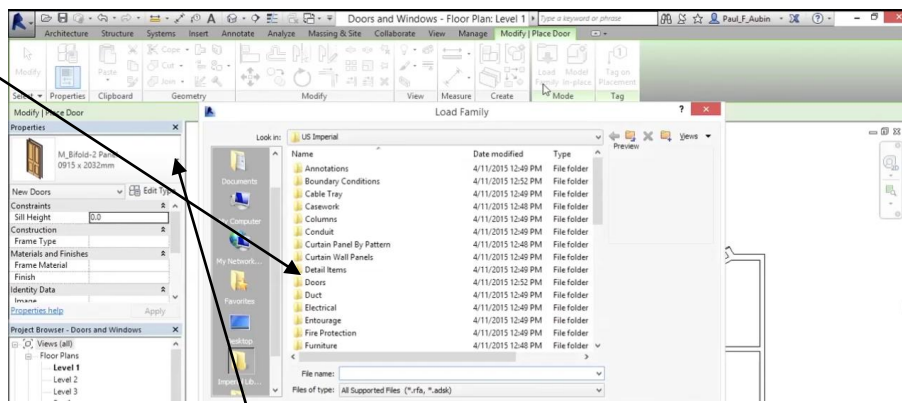
Click on **“Doors”**



“Load Families” of Doors (in Imperial Units)

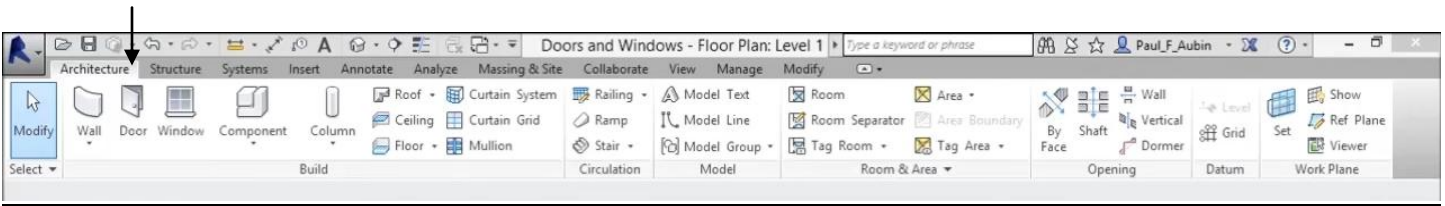


Pick **“Doors”** folder

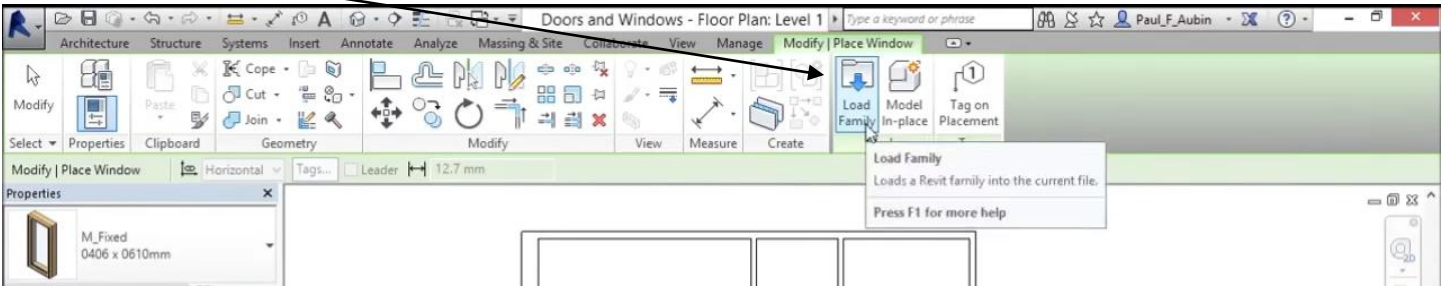


Load files that you believe will best match **DOORS** you plan to specify for your Café Design (considering Acoustical requirements you researched above). Expect to spend some time fishing around in here, and possibly loading more files from [SWEETS CATALOG](#). List her something(s) you may specify in Revit in your final design:

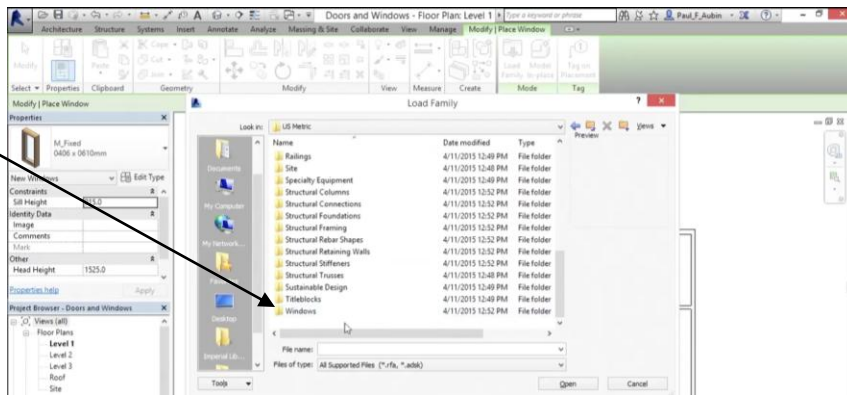
Click on **“Windows”**



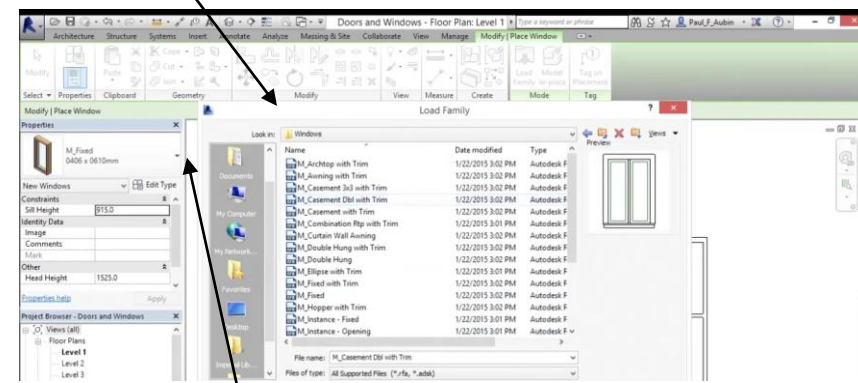
“Load Families” of Windows (in Imperial Units)



Pick **“Windows”** folder

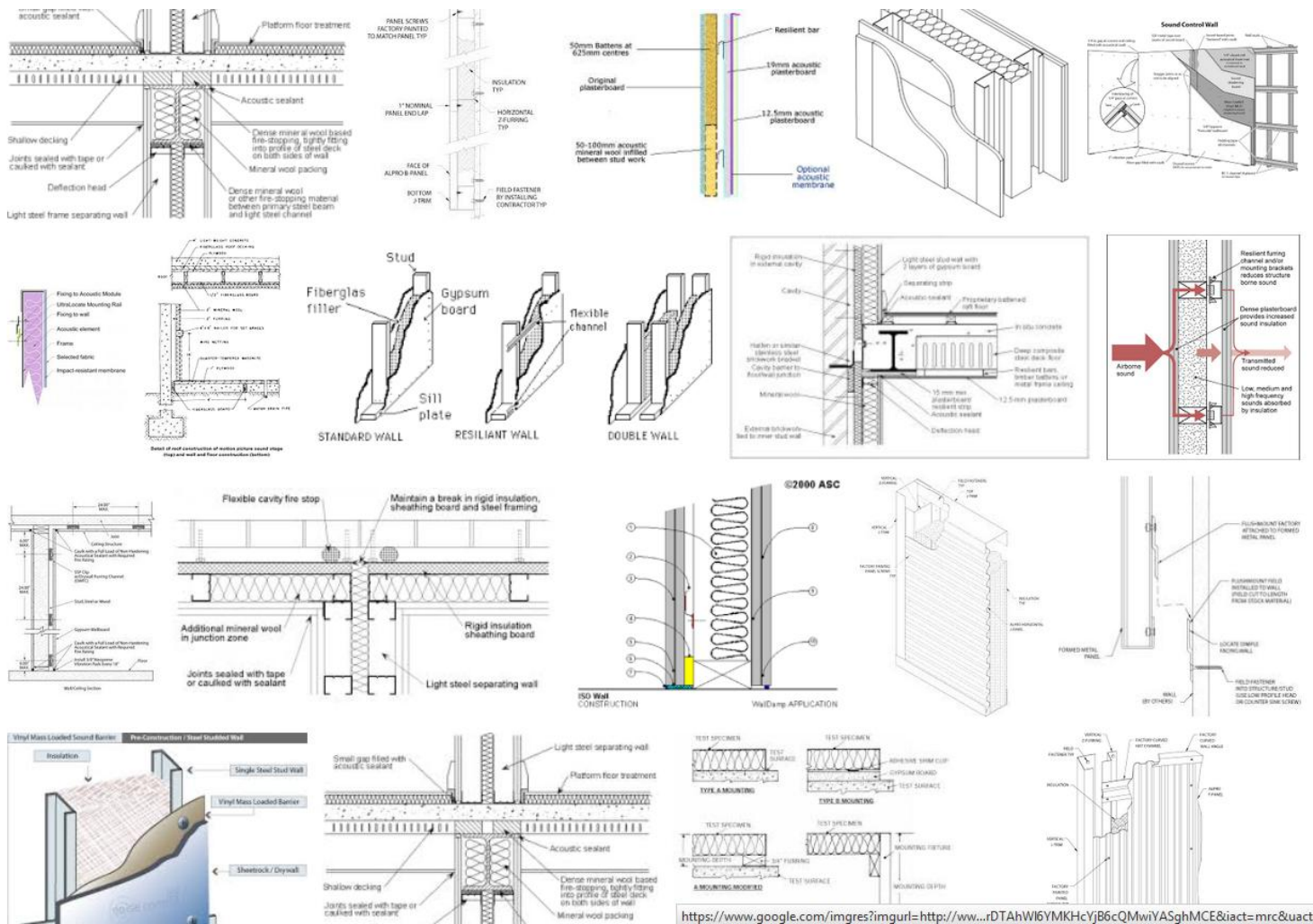


Load files that you believe will best match each Window in the Etown Library (Expect to spend some time fishing around in here, and possibly even loading more files from [SWEETS CATALOG](#))



Load files that you believe will best match **INTERIOR WINDOWS** you plan to specify for your Café Design (considering Acoustical requirements you researched above). Expect to spend some time fishing around in here, and possibly loading more files from [SWEETS CATALOG](#). List her something(s) you may specify in Revit in your final design:

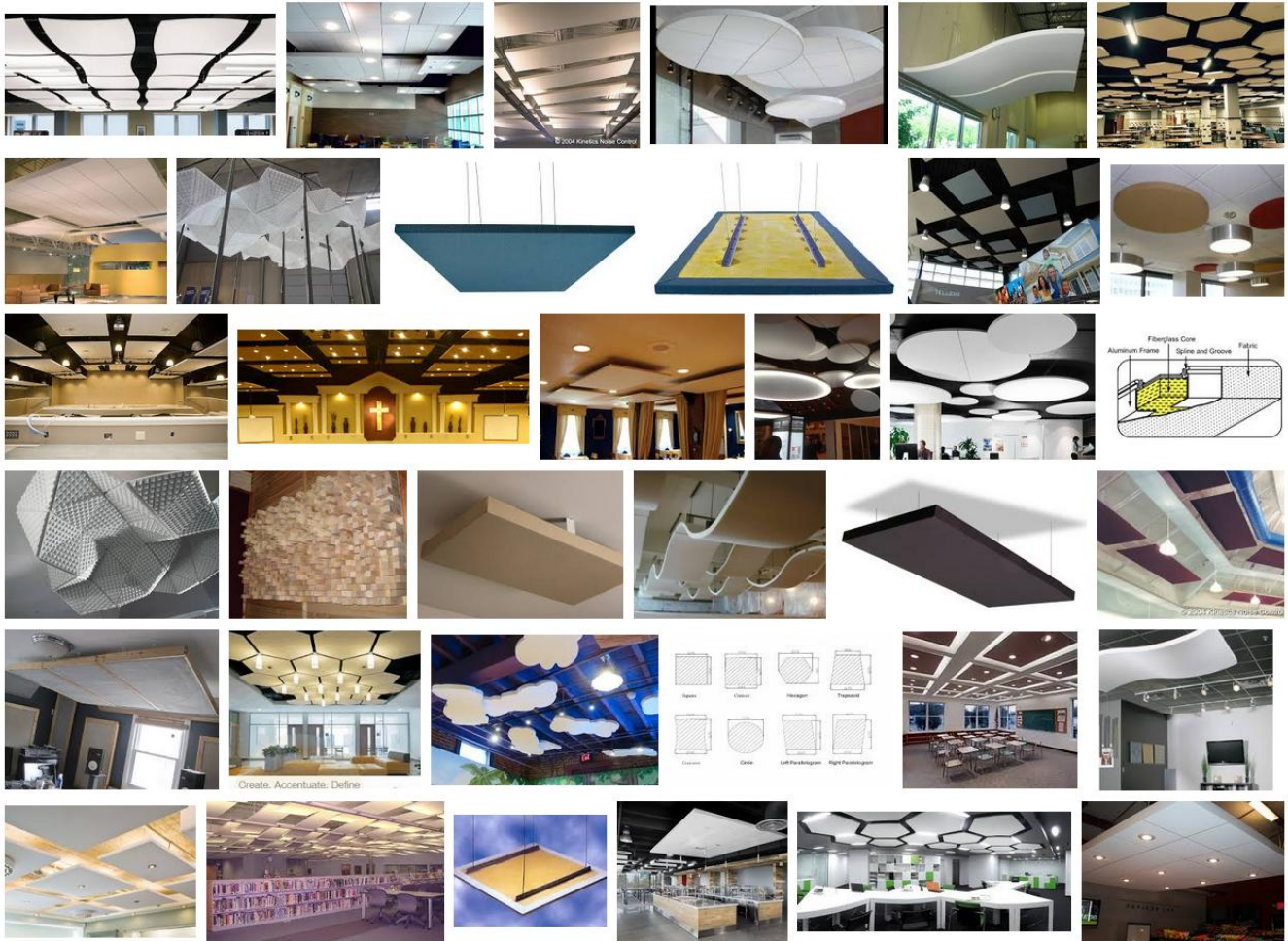
Google Image "Acoustical Wall Sections" :



<https://www.google.com/imgres?imgurl=http://www.rDTAhWl6YMKHcYjB6cQMwiYASghMCE&iact=mrc&uact>

SKETCH HERE ARCHITECTURAL DETAIL(S) / SECTIONS of walls for acoustical isolation and/or reverberation time control that you may include in your Cafe Design:

Google Image "Acoustical Cloud" :



SKETCH HERE AN INTERIOR PERSPECTIVE SKETCH of an acoustic cloud you may include in your Cafe Design (if you specify this, you should remove existing ceiling so that cloud is at same height as the existing ceiling):