

# Approximate Statistics on Elizabethtown College High-Tech Degrees

*(as of Spring, 2007)*

Computer Engineering (CENGR)  
Computer Science (CS)  
Information Systems (new INFSYS & old CSBIS)  
Engineering (new EGR's & old EGRPY)  
Industrial Engineering (IENGR)  
Physics (PHYS)  
Pre-engineering (PRENG, 3-2)  
Physics Education (PHYSed)

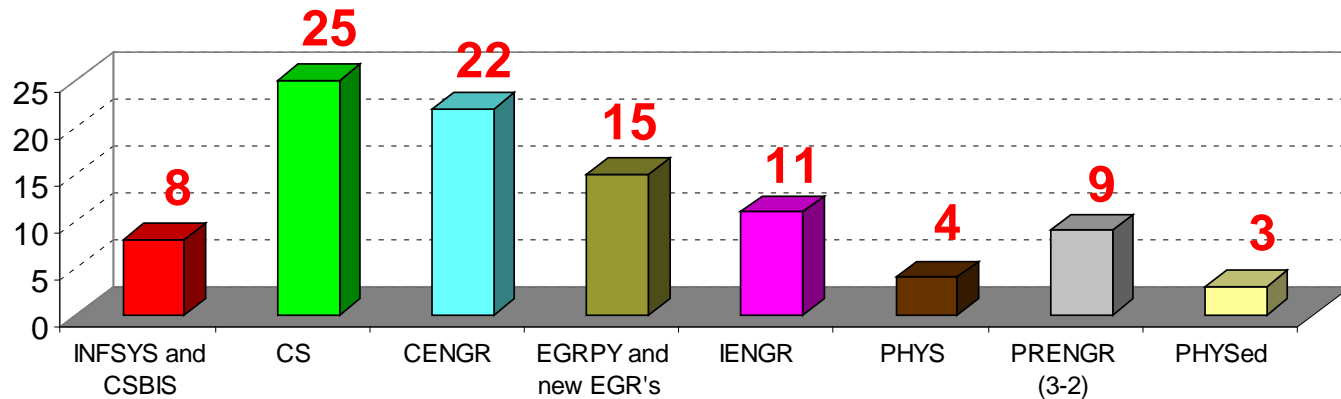
*J. Wunderlich, Ph.D.*

*Computer Engineering Program Coordinator*

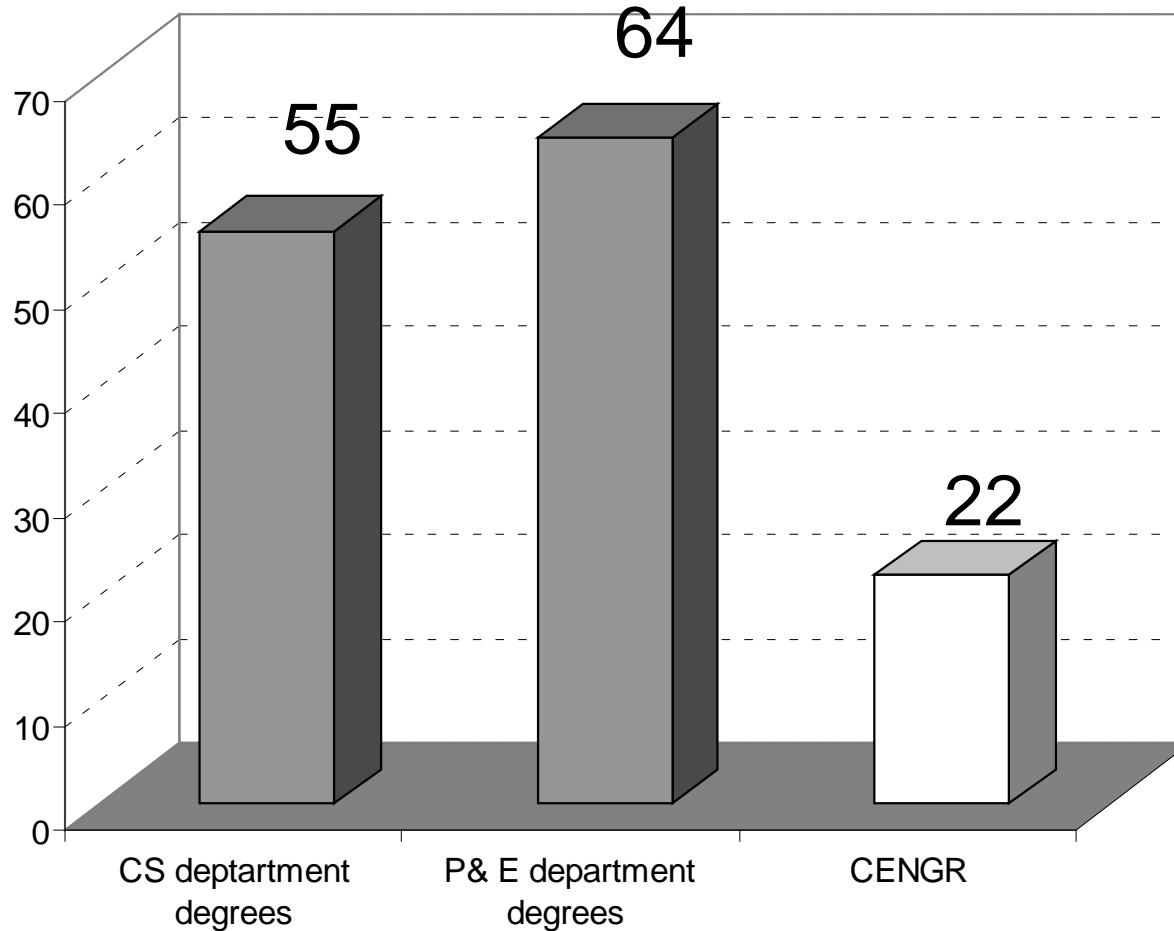
# Approximate Statistics

- All statistics were obtained from the Elizabethtown College Registrar and Alumni Relations offices by J. Wunderlich, Ph.D during Spring of 2007
- These type of statistics are always in flux (e.g., students changing majors, etc.)

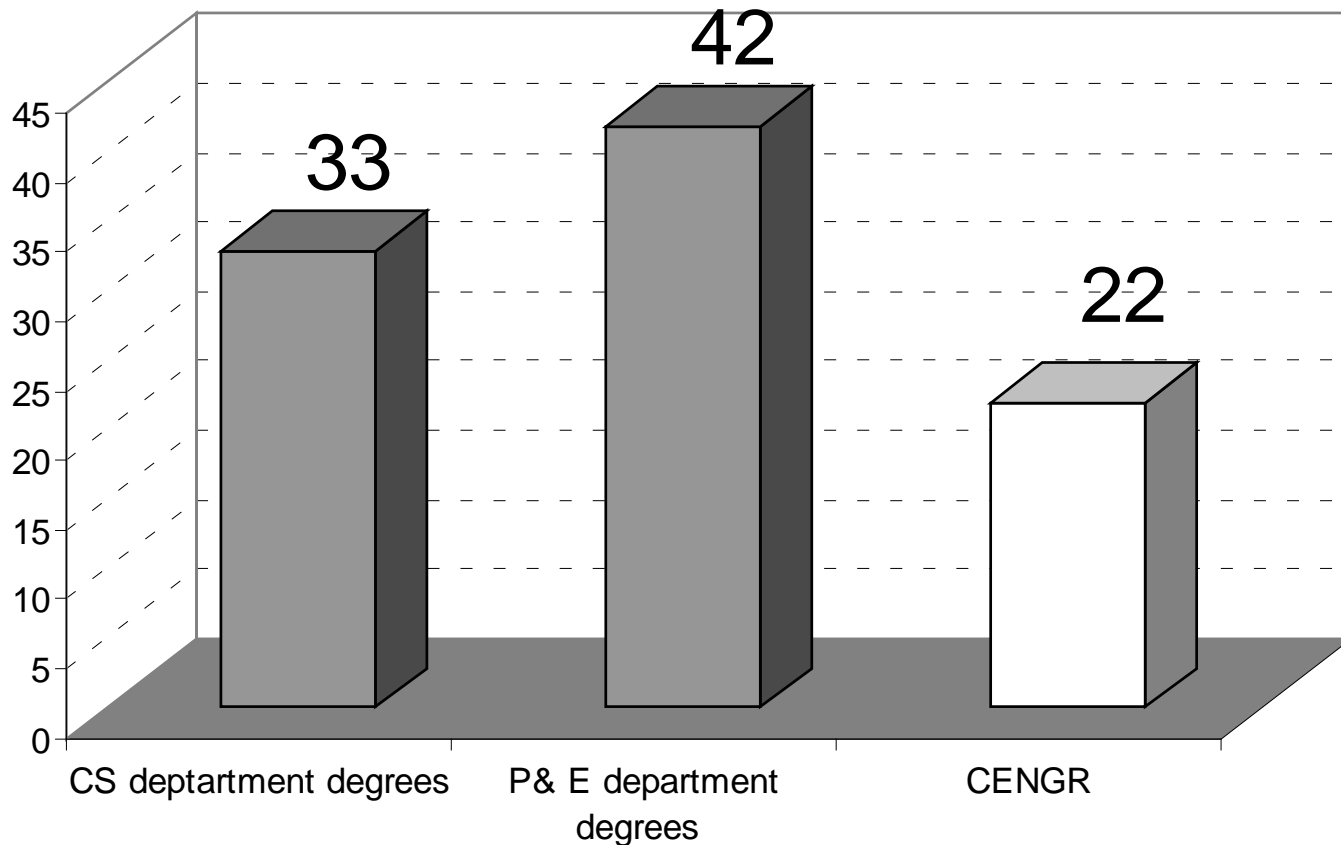
As of March 27, 2007,  
current Elizabethtown College *HIGH-TECH* students  
(including Fall 2006 grads)  
in INFSYS & CSBIS, CS, CENGR,  
new EGR's & *EGRPY*, *IENGR*, *PHYS*, *PRENG(3-2)*, and *PHYSICSed*



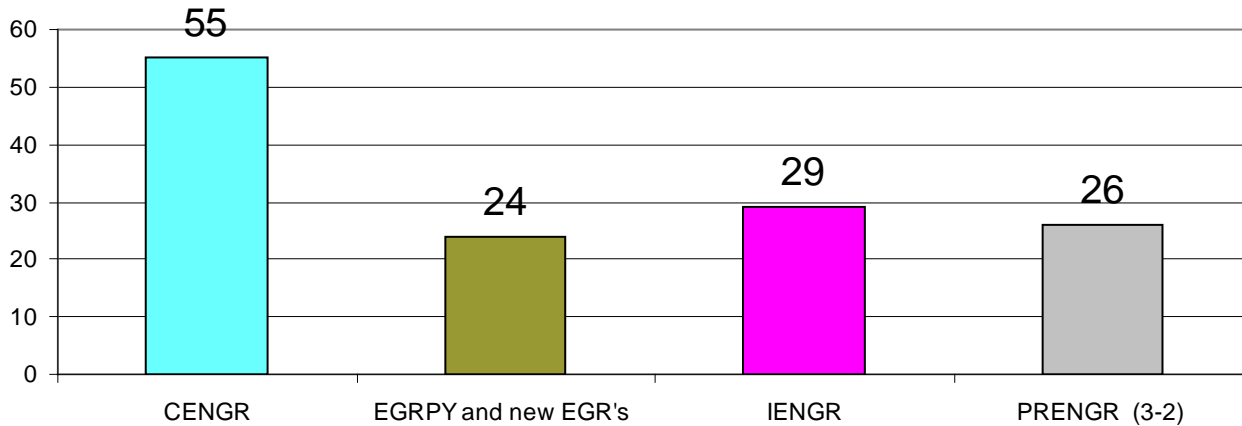
As of S07, current students in INFSYS & CSBIS, CS, CENGR,  
new EGR's & *EGRPY*, IENGR, PHYS, PRENG(3-2),  
and PHYSED,  
in CS dept. (including CENGR)  
or in P&E dept. (including CENGR)



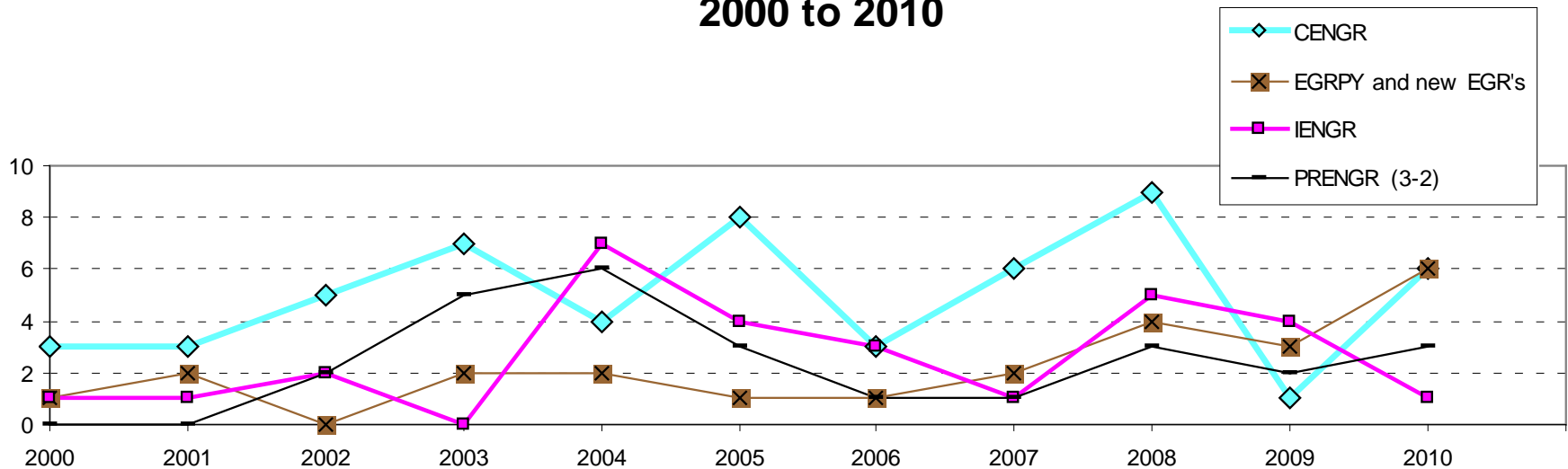
As of S07, current students in INFSYS & CSBIS, CS, CENGR,  
new EGR's & *EGRPY*, IENGR, PHYS, PRENG(3-2),  
and PHYSED,  
in CS dept. ( **NOT** including CENGR )  
or in P&E dept. ( **NOT** including CENGR )



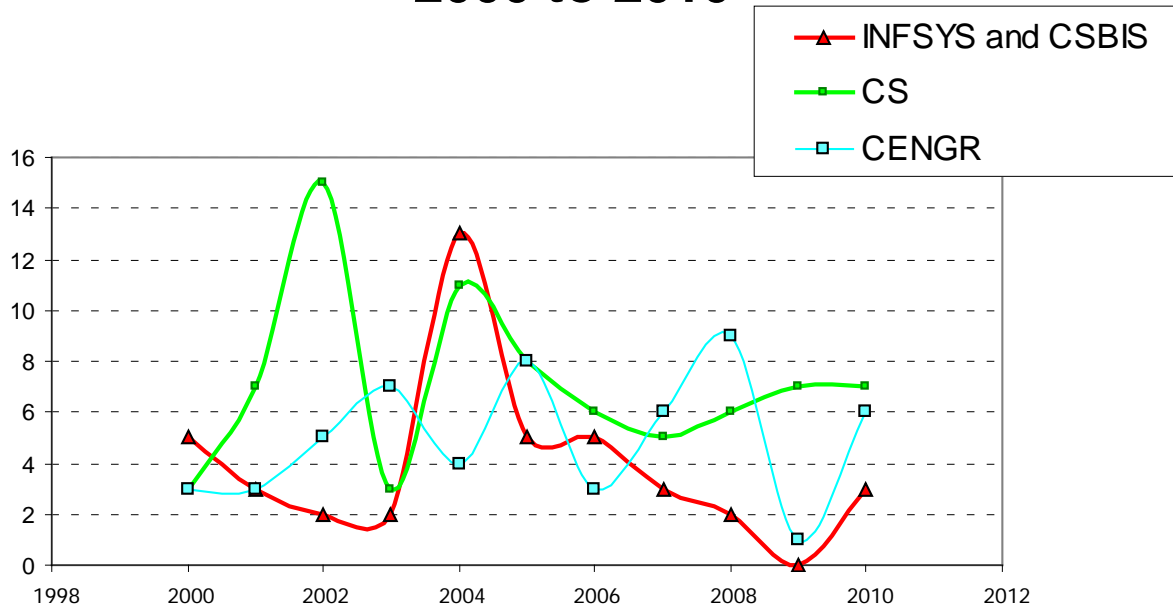
**Elizabethtown College BS degrees in Engineering 2000 to 2010**



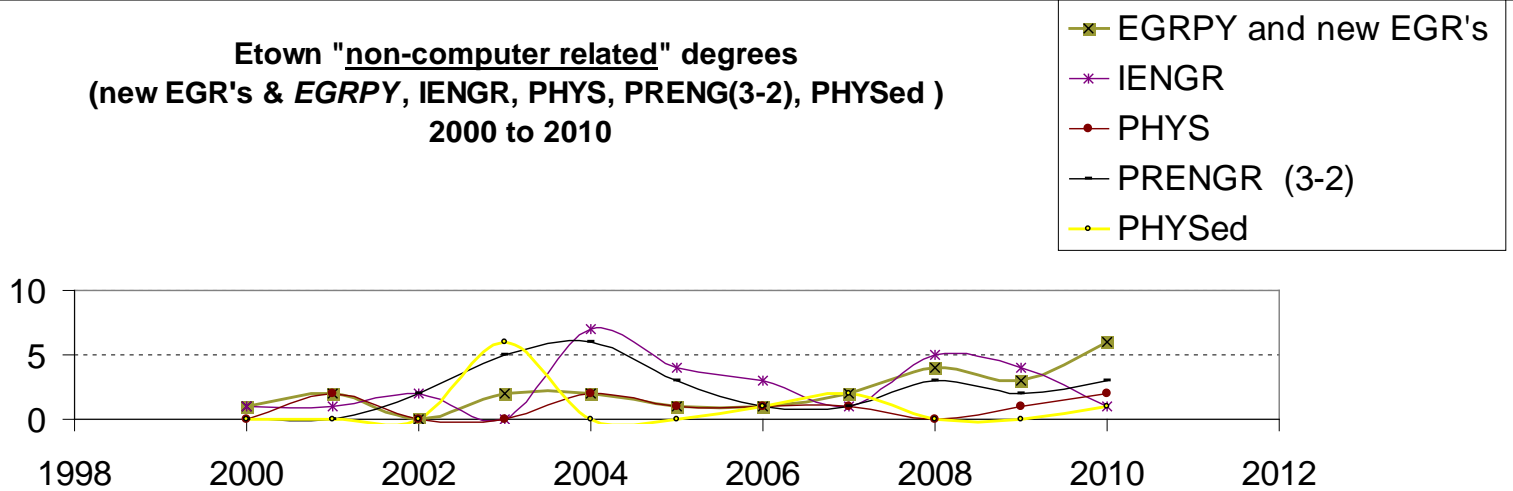
**Trends in Elizabethtown College Engineering degrees 2000 to 2010**



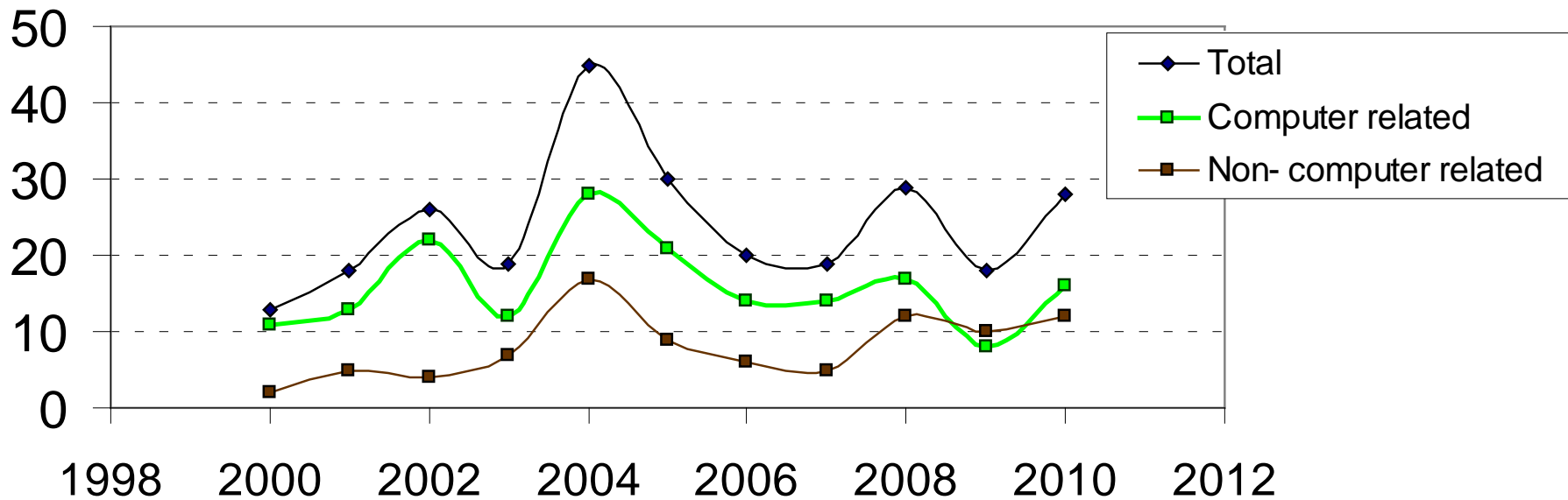
# Etown "computer related" degrees 2000 to 2010



# Etown "non-computer related" degrees (new EGR's & EGRPY, IENGR, PHYS, PRENG(3-2), PHYSed) 2000 to 2010

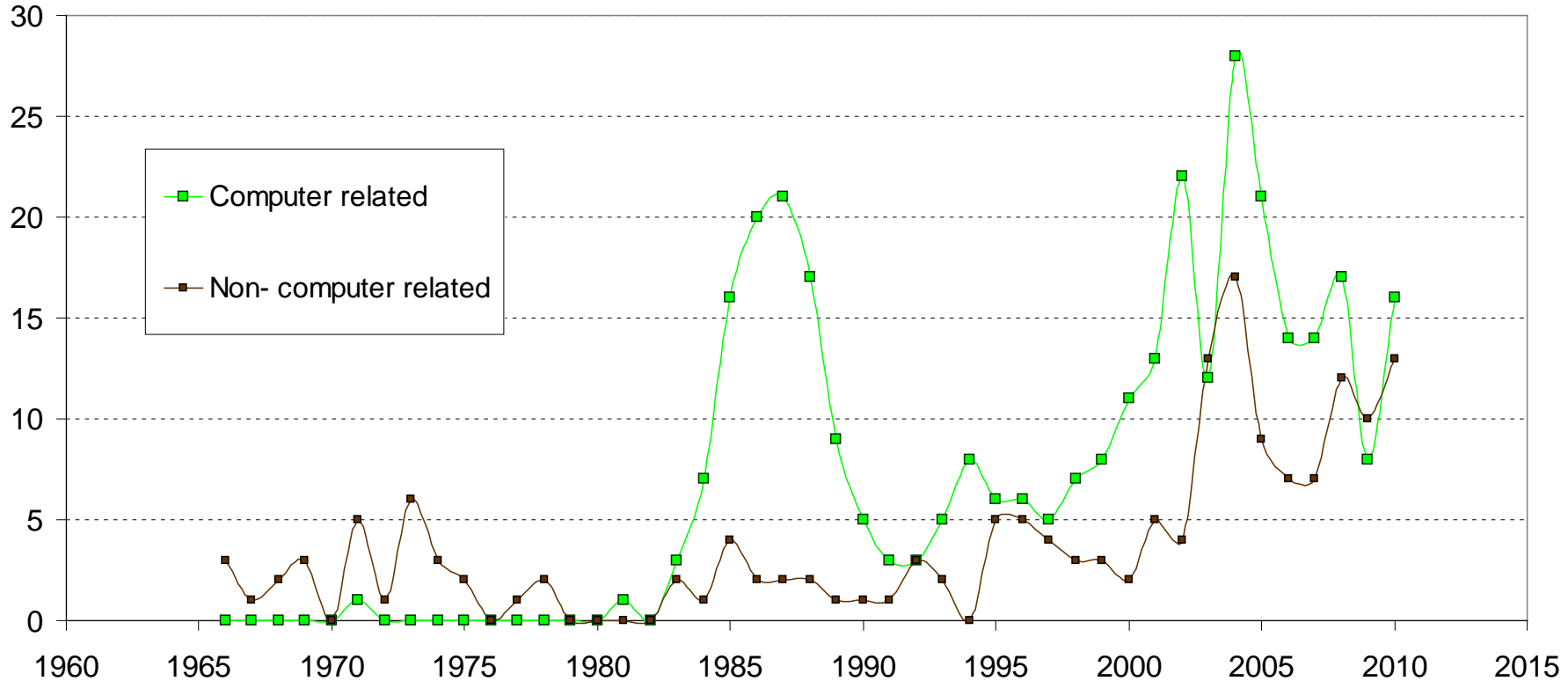


**Etown degrees in INFSYS & CSBIS, CS, CENGR,  
new EGR's & *EGRPY*, IENGR, PHYS, PRENG(3-2), PHYSED  
2000 to 2010, separated by "computer-related"**

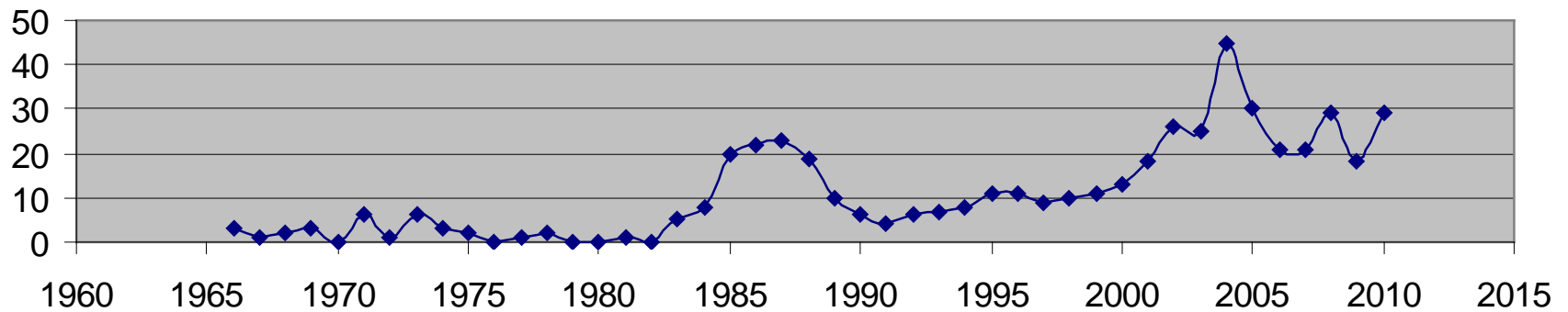




**Trends in Elizabethtown *HIGH-TECH* degrees**  
**Computer-related**  
**(INFSYS & CSBIS, CS, CENGR)**  
**vs.**  
**Non-computer related**  
**(new EGR's & *EGRPY*, IENGR, PHYS, PRENG(3-2), PHYSed)**



Trends in Elizabethtown College *HIGH-TECH* degrees in  
INFSYS & CSB/S, CS, CENGR,  
new EGR's & *EGRPY*, IENGR, PHYS, PRENG(3-2), PHYSed



**Elizabethtown College *HIGH-TECH* degrees  
(awarded and projected)  
in INFSYS & CSBIS, CS, CENGR,  
new EGR's & *EGRPY*, IENGR, PHYS, PRENG(3-2), and PHYSED  
since 1966**

