

Elizabethtown College Syllabus
EGR/ART 496
Architectural Design Studio II
SPRING 2025

Architectural design studio course with case studies and lectures.
Professional documentation, drawings, and defense of architectural designs.
Course Credit: 2



TIMES

Fridays 2:00-3:40pm or alternate times when announced.

PROFESSOR

Joseph T. Wunderlich PhD,
Associate Professor of Engineering and Computer Science
Architectural Studies Coordinator

- [Architecture Portfolio](#)
- [Architecture Website](#)
- [CV](#)

Office: E284E, E273

Office Hours: M 10:20-11:00, F 10:20-11:00, 12:20-2:00

Phone: 717-368-9715

Email: wunderjt@etown.edu

Web site: <http://users.etown.edu/w/wunderjt>

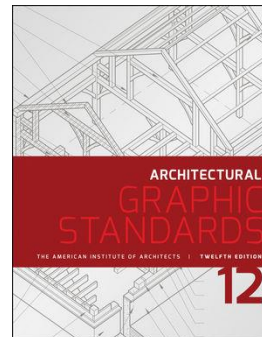
YouTube Channel: https://www.youtube.com/channel/UC_kM_k93zrelu40CVwuHQzg

MATERIALS & TOOLS

I will supply you with some materials and lend you some tools, however you may need to buy some materials and a few small tools.

BOOK

- [1] **(required)** American Institute of Architects, Dennis J. Hall (Editor-in-Chief),
Architectural Graphic Standards, 12th Edition, March 2016. ISBN: 978-1-118-90950-8



LEARNING OBJECTIVES / OUTCOMES

- Architectural Analysis, Case Studies, and Design
- Create architectural models
- Write architectural specifications
- Develop skills in architectural critique

GRADES

50% ASSIGNMENTS, ATTENDANCE, and PARTICIPATION -- Each student must work independently
40% SEMESTER PROJECT -- Each student must work independently or with one partner if given permission
10% PORTFOLIO ON-LINE

(60-62)=D-, (63-67)=D, (68-69)=D+, (70-72)=C-, (73-77)=C, (78-79)=C+, (80-82)=B-, (83-87)=B, (88-89)=B+, (90-92)=A-, (93-100)=A
(with any fractional part rounded to the nearest integer)

SCHOOL CLOSURES

Additional work assigned to cover any class cancelation

ACADEMIC INTEGRITY

Elizabethtown College Pledge of Integrity: *"Elizabethtown College is a community engaged in a living and learning experience, the foundation of which is mutual trust and respect. Therefore, we will strive to behave toward one another with respect for the rights of others, and we promise to represent as our work only that which is indeed our own, refraining from all forms of lying, plagiarizing, and cheating."* See the 2016-17 Elizabethtown College Catalog, "Standards of Academic Integrity http://catalog.etown.edu/content.php?catoid=10&navoid=507#Academic_Judicial_System or Academic Integrity at Elizabethtown College, 11th ed. <https://www.etown.edu/offices/dean-of-students/files/academic-integrity-handbook.pdf>

ARTIFICIAL INTELLIGENCE USE

"In this course, students shall give credit to AI tools whenever used, even if only to generate ideas rather than usable text or illustrations. When using AI tools on assignments, add an appendix showing (a) the entire exchange, highlighting the most relevant sections; (b) a description of precisely which AI tools were used (e.g. ChatGPT private subscription version or DALL-E free version), (c) an explanation of how the AI tools were used (e.g. to generate ideas, turns of phrase, elements of text, long stretches of text, lines of argument, pieces of evidence, maps of the conceptual territory, illustrations of key concepts, etc.); (d) an account of why AI tools were used (e.g. to save time, to surmount writer's block, to stimulate thinking, to handle mounting stress, to clarify prose, to translate text, to experiment for fun, etc.). Students shall not use AI tools during in-class examinations, or assignments unless explicitly permitted and instructed. Overall, AI tools should be used wisely and reflectively with an aim to deepen understanding of subject matter." *Source:* <https://ctl.utexas.edu/chatgpt-and-generative-ai-tools-sample-syllabus-policy-statements>

DISABILITIES

Elizabethtown College is committed to providing access for all students to courses, programs, services, and activities. If you have a documented disability such as a learning disability, chronic illness, or a new circumstance such as a concussion and would like to request accommodations, contact Lynne Davies, Director of Disability Services by phone (717-361-1227) or e-mail (daviesl@etown.edu). The Office of Disability Services can provide resources to you and facilitate communication with faculty about reasonable accommodations. After meeting with the Office of Disability Services, students must set up an appointment to meet with me, the instructor, to discuss the accommodations as they pertain to my class. Common accommodations may include extra time on exams, an alternate exam location, the ability to record class lectures, and access to content with a screen reader.

RELIGIOUS OBSERVANCES

The College is eager to facilitate individual religious beliefs and practices whenever possible while retaining course student learning outcomes. It is your responsibility to meet with the class instructor in advance to request arrangements related to your religious observances that may conflict with this class, and to make appropriate plans to make up any missed work. The following is a link from the Chaplain's Office website where a list of Religious Holidays needing accommodations (if requested) is posted: <https://www.etown.edu/offices/chaplain/index.aspx>

Title IX

Elizabethtown College and its faculty are committed to creating a safe and open learning environment for all students. If you or someone you know has experienced sexual harassment, including sexual assault, dating or domestic violence, and stalking, please know that help and support are available. Etown strongly encourages all members of the community to take action, seek support, and report incidents of sexual harassment to the Title IX Office. You may contact the Title IX Coordinator at reedg@etown.edu or learn more by visiting <https://www.etown.edu/offices/diversity/titleix/index.aspx>.

MENTAL HEALTH & COUNSELING RESOURCES

Counseling Services provides a broad range of counseling and mental health support services that facilitate students' personal, social, and academic development. The licensed mental health professionals provide short-term individual counseling, group counseling, crisis intervention, and consultation to currently enrolled students for no additional charge. Counseling services are provided in a confidential and diversity-affirming environment to help students address a variety of mental health, situational, and developmental concerns. The office is located in the Baugher Student Center, Suite 216. Appointments can be made in person or by calling 717-361-1405. Urgent walk-in services are also available. To access the after-hours crisis services, please call the 24/7 Campus Security number of 717-361-1111. For more information, please visit www.etown.edu/offices/counseling.

COURSE MODIFICATIONS FOR NON-NATIVE ENGLISH SPEAKERS

Elizabethtown College is committed to providing equitable access to all courses, programs, and services for non-native (international and domestic) English speakers. Students may request tutoring, learning resources, course modifications, and learning opportunities. Students interested in seeking a course modification should contact Ms. Maria Petty (pettym@etown.edu), International Student Programs Advisor, at (717) 361-1594.

SEMESTER PROJECT - CEDAR HILL HOUSING

Design on the Elizabethtown College Cedar Hill site, housing for approximately **100 students** in apartment/townhouse style units designed for 4 students, each containing a kitchen, laundry, two bathrooms, and a living room. Units should be grouped into a cluster of buildings, with preferably staggered connectivity between units. The 2011 concept drawing by Derck & Edson below, with six separate buildings, is not fixed – in either the number of buildings, or their orientations.

2011 update to 1999 Master Plan by Derck & Edson:



Six Derck & Edson proposed buildings are not fixed
(i.e., **Student designs likely completely different**)

Student **housing** for Cedar Hill, Also design a new **quadrangle**, **with a fountain**, that extends to the library

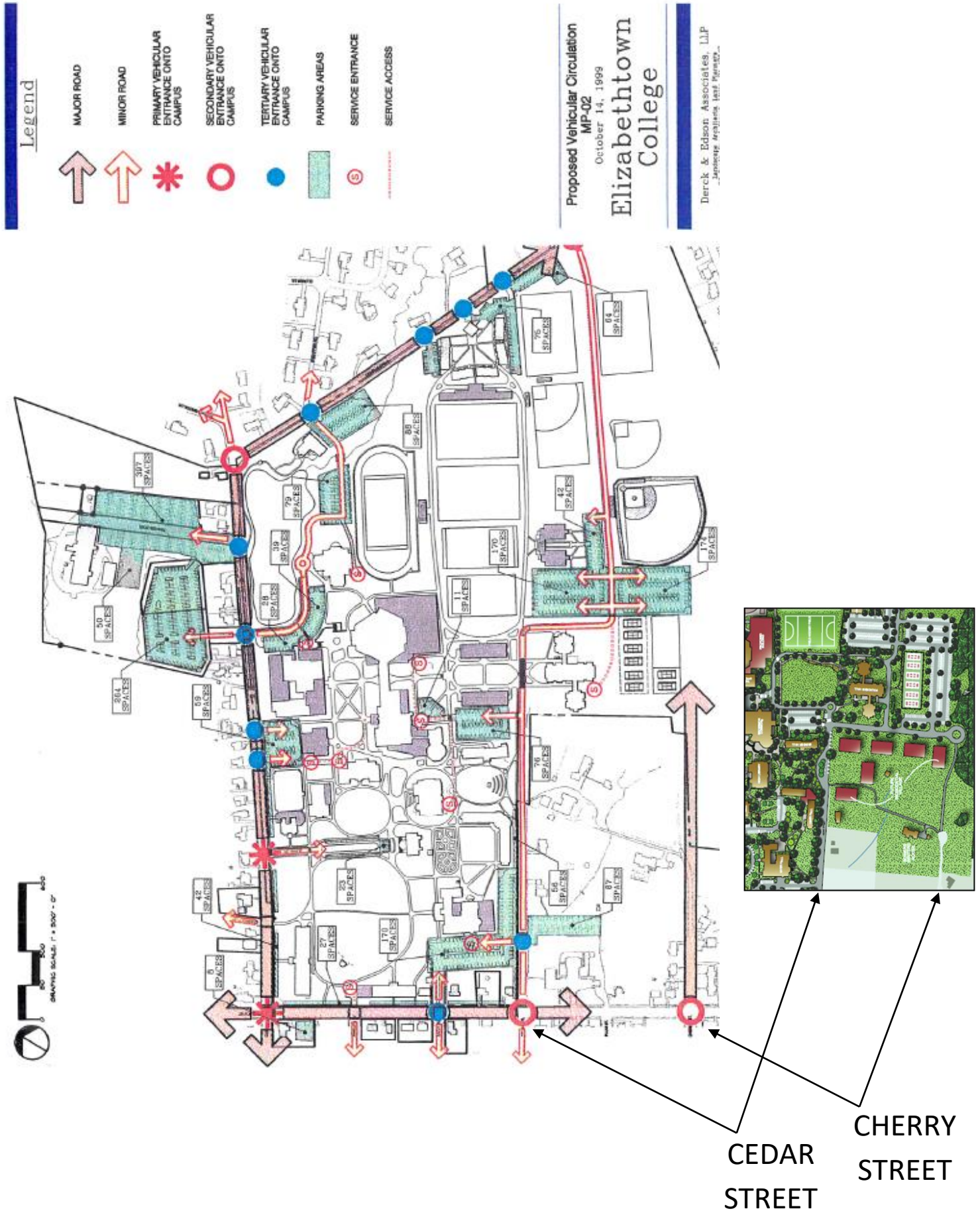
It's optional to end Cedar Street before your new Quadrangle (from the library to your housing cluster), and to create a new main entrance to the College on Cherry Street leading to the center of campus as shown below. But never-the-less **design a new Quadrangle from your new housing, down to the library.**

You are allowed to move as much dirt as you wish (i.e., in the cut & fill "grading" of your site), including possibly making a continuous, or stepped, change in elevation from the elevation line at 520' located at the Cherry Street extension side of your site, down to the 500' elevation at the library. Provide one parking space on site for every 4 students.

This development should be consistent with the [Elizabethtown Borough Regional Plan](#) and the [Elizabethtown College Master Plan](#) including [the 1999 Master Plan \(Chapter1\)](#), [the seven 1999 Site Analysis Maps](#), [the 2011 Plan Update](#),

PROPOSED MOVING OF MAIN ENTRY on CEDAR STREET to CHERRY STREET

1999 Elizabethtown College Master Plan

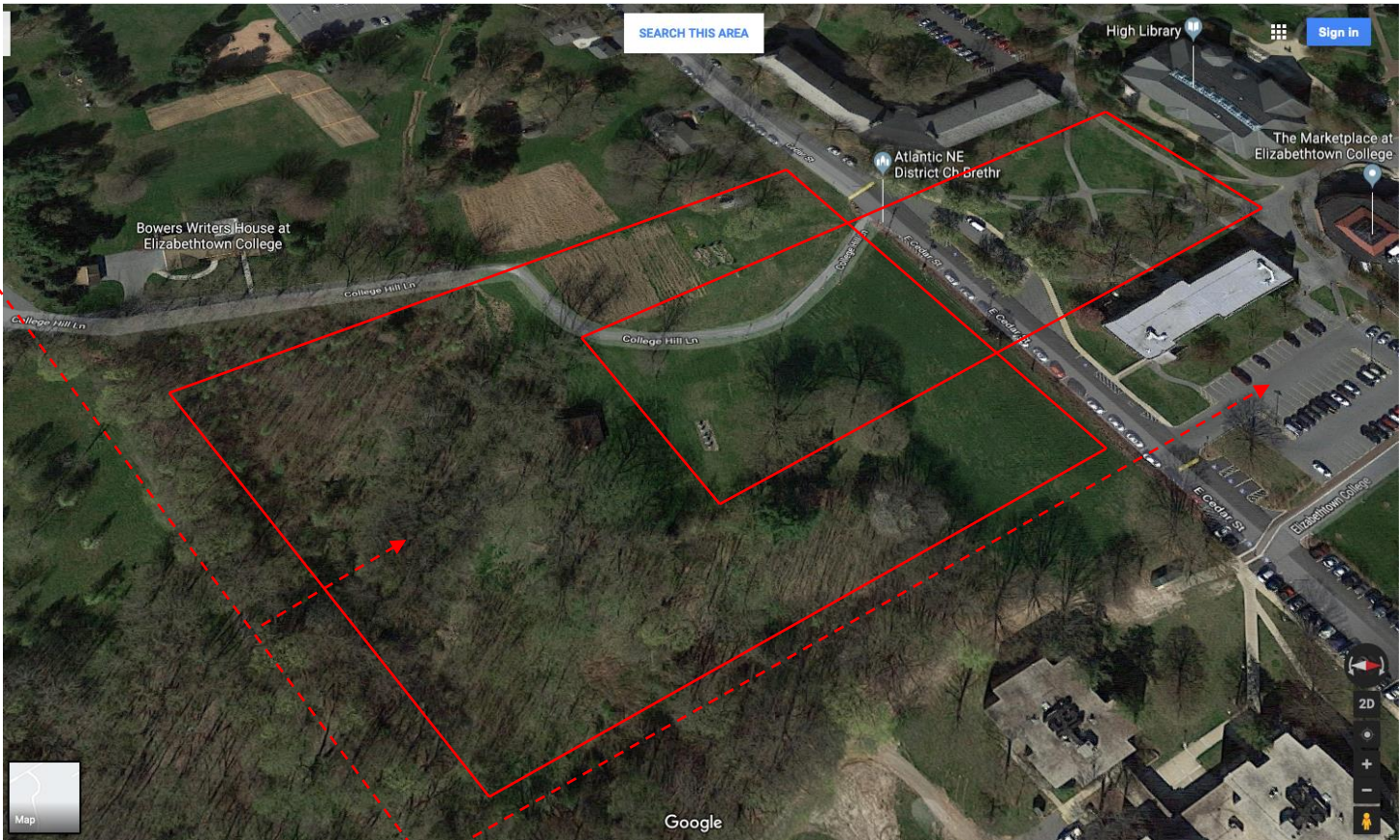
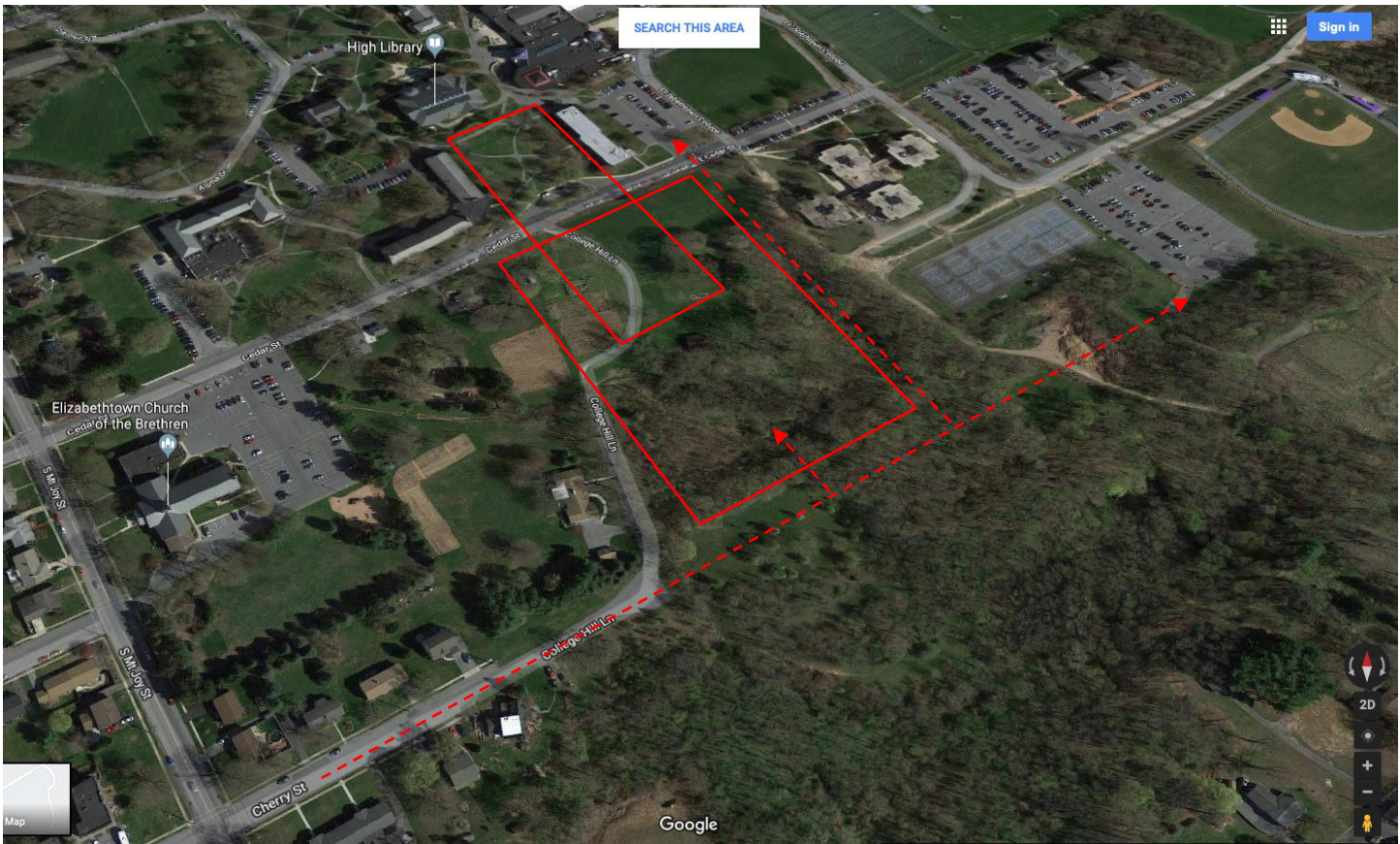


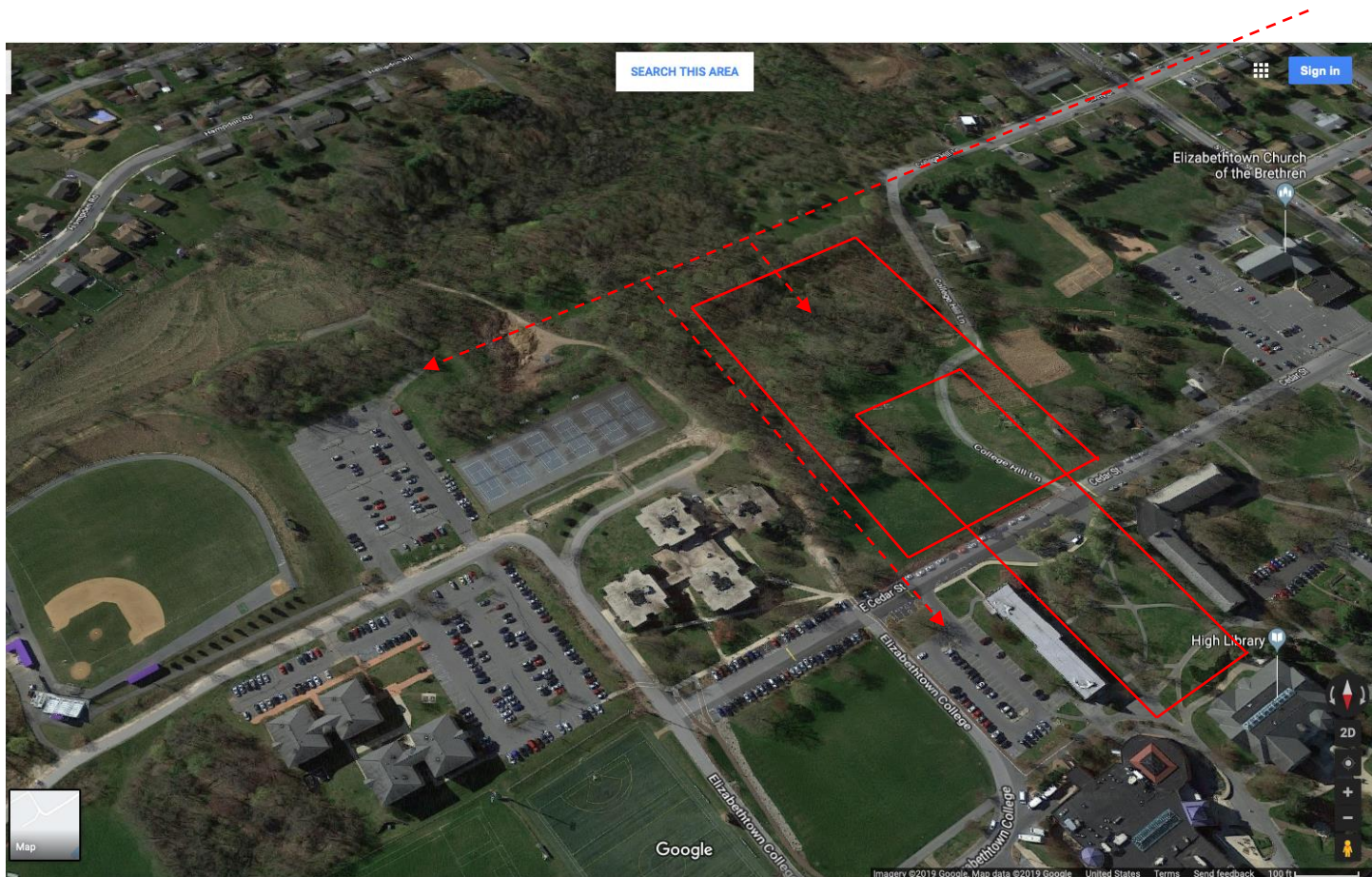


NORTH

CEDAR HILL HOUSING







View driving East up Cedar Street with site on the right:

